

# VIRGINIA TECH HOKIES

C Andrew Miller



## POSITION OUTLOOK FOR 2013

**QUARTERBACKS** - In '11 VT had to replace ACC POY Tyrod Taylor (2743, 60%, 24-5, 659 rush) who left (#6DC) as the car passing and tll of leader. Logan Thomas (PS#3TE) played in 7 (12-26-107) in '10. When I spoke with Frank Beamer, he expressed great confidence in the 6'6" 257 lb Thomas, who had a strong arm and great mobility. Thomas started off slow but got better weekly in '11, finishing w/3013 (60%, 19-10, 469 rush, 3.1). His 11 rush td's tied for the most by a QB in VT history (Bruce Arrians '74). Against Miami, Thomas became the first VT QB s/99 (Michael Vick) to have more td's than inc passes (23-25, 3 td, VT comp rec under Beamer) and had the game winning 19 yd td run on 4&1. He wore down GT, outweighing the LB's by 20+ lbs (18-70 rush). Thomas was listed as a potential 1st Rnd DC by most, even drawing Cam Newton comparisons prior to LY but had a disappointing season. He threw for just 2,976 (51.3%, 18-16) but was the #1 rusher with 524, (3.0). Soph Mark Leal (PS#83) ply'd in 2 (4-6-26) and Brenden Motley (6'3" 219, PS#51) RS. Thomas' poor ssn LY is actually a boon for VT this year. As opposed to leaving early for the NFL draft, he has opted to return and I look for him to have the type of ssn that most expected of him LY.

**RUNNING BACKS** - Prior to LY, VT had no problems replacing a 1,000 yd rusher as long as they had a VHT waiting in the wings. In '08 rFr Darren Evans (PS#16) set the ACC single ssn frosh rushing rec'd with 1,265 (4.4). In '09 He tore his ACL and rFr Ryan Williams (PS#11) broke Evans' frosh record with 1,655 (5.6) and an ACC record 22 tll td's. In '10 RB cch Billy Hite called it the strongest backfield he's had in 32 yrs at VT. David Wilson (PS#8) finished #3 with 619 (5.5), Williams played in just 10 (5 st, inj, 477, 4.3) and Evans led with 854 (5.7). In '11 both Evans and Williams departed. Wilson set the single season record with 1,709 (5.9) but left early and became the 9th VT player to be drafted in the 1st Rnd (#32 overall). LY I pointed out that I did not see a RB of Wilson's caliber as the unit ret'd just 161 car yds, with all but 32 of them belonging to Tony Gregory (PS#113). The best RB rush tll in the first 6 was 68 by Gregory vs BG but JC Coleman had 183 vs Duke, which was the unit's only 100 yd game on the yr. They used a 4 man RB rotation for most of the ssn up until Clemson. Coleman had the fewest yds (492, 4.5) for a #1 RB here s/67 but did grab 6 rec vs NC (most by VT RB s/73, Phil Rogers). Gregory added 299 (4.7) and rFr Michael Holmes (PS#88) had 280 (4.0). They managed to RS Trey Edmunds (PS#35) and Chris Mangus (5'11" 188, PS#57). TY they lose FB Joey Phillips (5 rec, 4 st) and his bkp Martin Scales (2 st) but are much more exp'd and have added talent so I'll call this a vastly improved RB corps.

**RECEIVERS** - LY VT had to replace its #1 & #2 career rec's, Jarrett Boykin (761, 12.5) and Danny Coale (904, 15.1). DJ Coles RS so they had just 1 of their top 5 back in Marcus Davis (510, 17.0'11). For the first time in Beamer's 26 ssn's a WR led VT in rushing for a gm (Davis vs AP). Davis had four 100 yd rec efforts, finishing #1 (953, 18.7). Converted track star Corey Fuller (walk-on trans Kan, 4.35 spd) was #2 with 815 (19.0) incl 143 vs NC. RFR Demetri Knowles (PS#222, top KR) was #4 (240, 12.6). 6'2" Dyrrell Roberts had 4 st (303, 14.4) in '10 but was inj'd in '11 (3 rec) and was #3 (398, 12.1) LY. TY they lose Davis (10 st), Roberts (10 st), Fuller (8 st, #6DC DET) and TE's Eric Martin (4 st, 3 rec) and Randall Dunn (3 st, 12 rec). Not listed below are TE's Darius Redman (6'4" 258 So, PS#31), Dakota Jackson (6'3" 269 rFr, PS#44) and Jack Willenbrock (6'3" 245 rFr, PS#122). With Coles back they have the same amount of exp as LY and add in VHT rFr Joel Caleb (PS#12).

**OFFENSIVE LINE** - In '11 I called for VT to have its lowest sk % s/03 and that they did (17, 4.2%) even though they were just 3Y removed from having all'd 96 comb sks in '07 & '08. Despite having all 5 OL start all 14, they slipped to 187 ypg rush (4.4). LY they had to replace 151 car sts (17 ret). To make matters worse, their 1 ret s'r C Andrew Miller was OFY after 7. Georgia transfer Brent Benedict (PS#7) st'd 6 of the final 7 and the greatly inexp'd unit only slipped to 146 (3.7) while allowing a respectable 25 sks (5.7%). TY they lose LT Nick Becton (13 st), RT Vinston Painter (13 st, #6DC DEN) and RG Michael Vay (9 st). Despite losing 3 s'trs, they are more exp'd (44 car sts), have 4 back who st'd 5+ LY and new OL cch Jeff Grimes has a lot more to work with than Bryan Stinespring/Curt Newsome had LY.

**DEFENSIVE LINE** - To give you an idea of how good VT's rush D is, in '09 they allowed 128 ypg rush (3.6), their "worst" numbers s/03. They regressed to 156 (4.7) in '10. In '11 they had to replace two 2nd Tm ACC DL and then Antoine Hopkins (12 st, 45 tkl '10) was OFY after 5, making them small and inexp'd in the middle. VT still improved to 104 ypg (3.2, 41 sk). Corey Marshall (then 250 lb) became the first true frosh to start here s/02 and later was replaced by another frosh in Luther Maddy (then 288 lb). LY the line ret'd mostly intact (lost 3 bkp) incl 2nd Tm ACC DE James Gayle (4.4 spd, DE record 39.5" VL). The first 6 gms stunned me as VT all'd 196.7 ypg rush (4.6, 8 sk). I was beginning to wonder if DC Bud Foster and his metal lunch box had lost it, but over the final 7, VT's DL all'd just 80.4 ypg (2.4) with 27 sks despite facing 5 bowl eligible teams. TY VT loses DT Hopkins (4 st, 13 tkl, 3.5 tfl) but has 7 of the top 8 back. Not listed below are Justin Taylor (6'2" 268 So, PS#189) and Matt Roth (6'4" 242 So, PS#180). This is one of the top DL's in the country.

**LINEBACKERS** - In 2011 Jeron Gouveia-Winslow and Bruce Taylor comb'd for 13 sts before going down with Lisfranc inj's (often a long recovery). VT still only allowed 17.6 ppg as they moved CB Kyle Fuller to WHIP LB. LY they had to replace 3 bkps (2 st, 29 tkl). The top 3 all missed spring and Tariq Edwards (14 st, 71 tkl '11) was never 100% (4 tkl). Jack Tyler led with 119 tkl (13 tfl) and rFr Ronny Vandeyke (PS#64) may have been the most athletic of the LB's (21 tkl). VT slipped to allowing 22.8 ppg (most s/03). TY they lose Bruce Taylor (11 st, #3 tklr, 5.5 sk), Gouveia-Winslow (F/4 st, 28 tkl) and Alonzo Tweedy (L/3 st, 38 tkl, 3 sk). They lose 3 of the unit's top 4 tkl'r's but Edwards should return to form and I'll call them stronger than the L2Y's injury-plagued groups.

**DEFENSIVE BACKS** - VT always fields a solid secondary with Top 15 finishes in my PDR in 8 of the L9Y. LY they had to replace a 2nd Tm ACC CB (#5 tklr, 3 int, 12 pbu, #3DC), a 1st Tm ACC ROV (#2 tkl'r) and a CB (5 st, 34 tkl). They ret'd 32 sts from '11 and I said they would be your typical VT top-notch secondary. They finished #8 in my PDR (50.1%, 17-13). TY the only loss is

NB Michael Cole (4 st, 43 tkl, 2 int) although 2nd Tm ACC Antoine Exum (5 int, 16 pbu!), who turned down the NFL, tore his ACL in Jan and is ? for '13 (hopes to ret by Bama). 3rd Tm ACC Kyle Fuller (#5 tkl'r, 5 pbu) leads a unit that remains among the elite and adds in PS#3 and #15 true frosh.

**SPECIAL TEAMS** - Beamer coaches this unit himself and VT almost always finishes near the top of my ST rankings (#1 in '07). In '11 they surprisingly slid to #44 and were only #37 in '12. Dyrrell Roberts held the VT rec with 1,577 car KR yds but was at WR exclusively LY. After 4 gm, Kyshoen Jarrett ranked 1st in the nation in PR at 35.4 but finished with 250 (13.9). NC got the first KR td vs VT s/93 (237 gm). Tech has blk'd 129 kicks in 322 gms under Beamer but those numbers have dwindled recently as after 5 blk'd kicks in '08 they've had just 6 the last 4 yrs. Cody Journell hit 20-25 fg's (L/42) and true frosh P AJ Hughes avg 40.6 (36.0 net). TY, with everyone back and Beamer still on the sidelines, they could very well grab a Top 10 finish.

**COACHES** - Beamer played CB here ('66-'68) and now stands as the FBS's active leader in wins. He had 4 losing ssn's in his F/6 but has now taken the Hokies to 20 straight bowls. For the first time s/02 there's a new OC. Scot Loeffler was Auburn's OC LY, Temple's in '11 and Florida's QB cch the 2 years prior. Bud Foster has been the DC s/95 and won the Broyles Award in '06 (only 4x finalist in award's history). Foster's scoring def's had finished in the Top 9 seven of the previous 8Y but slipped to #18 LY.

## ALSO ON ROSTER:

FB Fuller Hooper 6'2" 249 Jr	DL Jeremy Haynes 6'3" 225 rFr
FB Maurice Taylor 5'8" 171 So	LB Tyler Brydger 6'2" 197 Fr
QB Trey Green 6'1" 215 Jr	LB Quinton Taylor 6'1" 209 Fr
QB Connor Jessen 6'0" 215 rFr	DB Nick Bush 5'10" 180 Jr
QB Brian Rody 6'2" 225 Jr	DB Chris Caver 5'8" 172 Jr
RB Daniel Dyer 5'9" 201 Jr	WR Michael Brannard 6'0" 190 So

## PHIL'S FORECAST

In 1999, the Hokies played in the National Title gm and went 22-2 in a two yr stretch. They are one of just 3 active NCAA tms that have been to 20 str bowls (Fla, Fla St). VT made the move to the ACC in '04 and has been the dominant tm going 57-15 (reg ssn) and playing in 5 of the 8 ACC Title gms, with 4 ACC Titles ('04, '07, '08, '10). Coming into LY VT was the only FBS team that had won 10+ gms in each of the L8Y. VT finished #9 in '07, #15 '08, #10 '09, #16 '10 and surprisingly in '11 only #21 after a Sugar Bowl OT loss to Mich (22-12 FD edge). VT had benefitted from 3 net close wins in '11, had to play Clem, NC and Miami all on the road LY and were picked 1st in the Coastal by 83 of the ACC's 95 media members. I had them 2nd. VT finished even lower than my expectations at 4th. Despite having all of Aug to prep for the GT option they needed a 41 yd fg to send it to OT where they won by 3. After beating AP 42-7, VT had their streak of 13 str road wins snapped in a 35-17 loss at Pitt (537-324 yd deficit). They shutout BG but Cincy went 85/9pl for a 39 yd GW td pass with :13 left at FedEx Field. VT trailed NC 45-26 after 3Q and lost by 14. VT trailed Duke 20-0 in the 1Q but won 41-20. They had a 248-137 yd edge vs Clem at half but trailed 17-10 and lost by 21. Miami, which had 16 (blk punt) and 19 yd 1Q td "drives", beat them 30-12. On a Thurs night they hosted #8 Fla St and VT got a 21 yd fg w/2:19 left for a 22-20 lead but had their 2nd loss on a td pass in the last minute (40). VT had to win its last 2 to get to a bowl and struggled vs BC needing OT. Vs UVA they had a 23-7 FD edge in a game played in swirling winds. After missing a 42 yd fg they got a 29 yd fg on the final play to keep their bowl streak alive. VT trailed Rut 10-0 at HT (154-53 yd deficit) but rallied for a 13-10 OT win. Things look much brighter for VT TY as my Stock Market Indicator is a bullish +4.0 and they were -3 in net upsets LY (pg 29). VT has 15 ret s'trs incl QB Thomas and keep in mind, LY they only had 1 ret OL s'tr and he was lost in Wk 7. Led by a Top 10 def, VT will start a new streak of 10+ wins and get my call to advance to the ACC Title game.

OFFENSE	JERSEY # IN MAROON	2013 PROJECTED STARTING LINEUP	JERSEY # IN MAROON	DEFENSE
QB 3 LOGAN THOMAS SR.	6-6 257	PS#3. 14 st, 3120 (59%, 19-10), 491 rush (3.1) 2Y. 13 st, 2976 (51%, 18-16), 524 rush (3.0) LY. 6 Mark Leal (6'1" 213 Jr) PS#83. 5 gm, 179 (68%, 2-0) 2Y. Buckly Hodges is PS#19.	6-2 253	15 st, 82 tkl, 16 tfl, 34 qbh 2Y. 8 st, 31 tkl, 6 tfl, 20 qbh LY. 90 Dadi Nicolas
RB 14 TREY EDMUNDS rFr.	6-1 215	PS#35. 4 JC Coleman (5'8" 177 So) PS#28. 6 st, 492 (4.5) true.	6-0 312	PS#126. 14 st, 60 tkl, 6.5 tfl 2Y. 13 st, 51 tkl, 10 tfl, HM ACC LY. 97 Kris Harley
20 Michael Holmes (6'0" 215 So) PS#88. 5 st, 280 (4.0) rFr. 22 Tony Gregory (6'0" 183 So) PS#113. 2 st, 428 (4.2) 3Y.	6-1 177	PS#222. 3 st, 240 (12.6), 595 KR (28.3) rFr. FB 32 Riley Beiro (5'9" 229 Jr) 14 gm rFr. 6 gm, 1 rec LY. 25 Jerome Wright PS#124. IFS. Greg Gadell (5'10" 195 Jr) DNP rFr. 6 gm LY.	6-1 295	PS#362. 7 st, 19 tkl, 2 tfl true. 9 st, 35 tkl, 6.5 tfl, 13 qbh LY. 96 Corey Marshall (6'1" 260 Jr) PS#43. 1 st, 13 tkl, 3 sk true. 4 st, 26 tkl, 3 tfl LY. 94 Aiston Smith (6'2" 299 Jr) PS#128.
WR 80 Demetri Knowles So.	6-4 238	PS#38. 3 st, 507 (13.0) 3Y. RS (inj) LY. 21 Mark Kirkley (6'3" 197 rFr) PS#85.	6-4 253	PS#217. 15 st, 51 tkl, 19 tfl 2Y. 11 st, 43 tkl, 11 tfl, 27 qbh LY. 2nd Tm ACC
WR 18 DJ Coles Sr.	19 Kevin Asante (6'0" 184 So). 1 st, 10 gm, 18 (9.0) rFr. David Prince (6'0" 185 Fr) PS#88. Charley Meyer (6'1" 208 rFr).	6-2 213	PS#64. 2 st, 13 gm, 21 tkl, 2 tfl rFr. 41 Devin Vandeyke (6'0" 215 rFr)	PS#69. 49 Josh Trimble (5'11" 219 So) 11 gm, 13 tkl rFr. Drew Burns (6'3" 216 rFr). Josh Eberly (5'8" 216 rFr).
WR 15 Joel Caleb rFr.	6-2 213	PS#12. 5 Joshua Stanford (6'1" 189 rFr). 85 EL Smiling (6'4" 202 Jr)	6-1 225	PS#329. 5 st, 67 tkl, 8.5 tfl 2Y. 13 st, 119 tkl, 13 tfl, 13 qbh, 1st Tm ACC
PS#172. DNP 2Y. 82 Willie Byrn (5'11" 175 Jr) 10 gm 2Y. Austin Jones (6'3" 176 rFr). Scott Rolon (5'9" 186 So).	6-4 248	PS#44. 7 st, 13 gm, 174 (10.2) LY. 86 Zack McCray (6'4" 253 Jr) PS#25DL.	6-0 193	PS#159. 20 gm, 10 tkl true. 1 st, 7 tkl LY. 35 Dahman McKinnon (6'0" 207 rFr) PS#87.
TE 88 RYAN MALLECK JR.	6-4 238	PS#38. 3 st, 507 (13.0) 3Y. RS (inj) LY. 21 Mark Kirkley (6'3" 197 rFr) PS#85.	6-2 232	PS#56. 14 gm, 21 tkl, 1 int rFr. 14 st, 71 tkl, 11.5 tfl, 4 pd, 6 qbh '11.
LG 76 DAVID WANG SR.	6-4 293	PS#148. 11 gm rFr. 14 st C '11. 7 st C, 7 gm (inj) LY. 79 Caleb Farris (6'3" 303 Jr) PS#100. 4 gm, 29pl '11. L/5 st C, 9 gm LY. LS 65 Joe St Germain (6'0" 217 Jr) all 13 gms as LS LY.	6-1 224	PS#45QB. 19 st, 134 tkl, 20 pd 2Y. 13 st, 48 tkl, 21 gm, 2nd Tm ACC LY.
RG 55 BRENT BENEDICT JR.	6-5 301	PS#78. RS UGA '10. Trans '11. 6 st RG, 13 gm LY. 64 Matt Arkema (6'3" 291 Jr) PS#88. 4 gm rFr. 2 st LG, 5 gm LY. Braxton Plaff (6'4" 285 Fr) PS#68. LS 59 Eddie D'Antuono (6'6" 271 rFr).	6-0 193	PS#159. 20 gm, 10 tkl true. 1 st, 7 tkl LY. 35 Dahman McKinnon (6'0" 207 rFr) PS#87.
LG 76 DAVID WANG SR.	6-2 291	PS#88. 4 gm rFr. 2 st LG, 5 gm LY. Braxton Plaff (6'4" 285 Fr) PS#68. LS 59 Eddie D'Antuono (6'6" 271 rFr).	6-2 232	PS#56. 14 gm, 21 tkl, 1 int rFr. 14 st, 71 tkl, 11.5 tfl, 4 pd, 6 qbh '11.
RT 63 LAURENCE GIBSON JR.	6-6 303	PS#131. 1 gm rFr. 12 gm LY. 70 Jake Goins (6'5" 285 So) PS#171.	6-1 224	PS#45QB. 19 st, 134 tkl, 20 pd 2Y. 13 st, 48 tkl, 21 gm, 2nd Tm ACC LY.
DNP rFr. 75 Adam Taraschke (6'5" 296 rFr) PS#185. Kyle Chung PS#142. Marcus Mapp (6'4" 296 So) DNP rFr.	6-2 291	PS#88. 4 gm rFr. 2 st LG, 5 gm LY. Braxton Plaff (6'4" 285 Fr) PS#68. LS 59 Eddie D'Antuono (6'6" 271 rFr).	6-0 193	PS#159. 20 gm, 10 tkl true. 1 st, 7 tkl LY. 35 Dahman McKinnon (6'0" 207 rFr) PS#87.
LT 69 MARK SHUMAN JR.	6-7 314	PS#54. 2 gm, 14pl, OFY rFr. 3 gm, 25pl LY. 71 Jonathan McLaughlin PS#176. IFS. 72 Augie Conte (6'5" 294 rFr) PS#136. Colton Taylor (6'0" 205 Fr) PS#146. LS. Preferred walk-on.	6-2 232	PS#56. 14 gm, 21 tkl, 1 int rFr. 14 st, 71 tkl, 11.5 tfl, 4 pd, 6 qbh '11.
K 89 CODY JOURNELL SR.	6-0 181	PS#4. 14-17 fg, L/42, 43-44 PAT, HM ACC '11. 20-25 FG, L/42, 34-36 PAT LY. 45 Brooks Abbott (6'2" 189 So) PS#68. 39 KO, 9 TB, 1 OOB true. 38 Michael Branthover (5'9" 193 Jr) PS#50.	6-1 201	PS#186. 79 punts (40.6), L/57, net 36.0, 22 In20 true. 38 Michael Branthover PS#50. 25 (36.6), 7 In20, 3 TB true KO LY. Hunter Windmuller (6'3" 177 rFr). Ethan Keyserling (6'2" 199 Jr).



# VIRGINIA TECH HOKIES

Blacksburg, VA WEATHER: 24060  
Enrollment: 23,700 (#43)

## FRANK BEAMER

PLAYING EXP: CB at Virginia Tech ('66-'68)  
PRIOR HC EXP: Murray St '43-'23-2 ('81-'86)

27<sup>th</sup> Year Here / 27<sup>th</sup> Overall FBS

2012 RECORDS

**7-6**

CONF: 4-4 (4 Coastal)

2013 RET STARTERS:

OFF: 6\*

DEF: 9

LETTERMEN (O/D/S/T)

RET: 50 (22,23,5)

LOST: 16 (11,5,0)

Record: 216-104-2

Bowls: 9-11

Home: 127-33-1

Away: 77-53-1

Neutral: 12-18

Vs Conf: 115-38

Vs Top 10: 6-28

Vs Top 25: 41-47-1

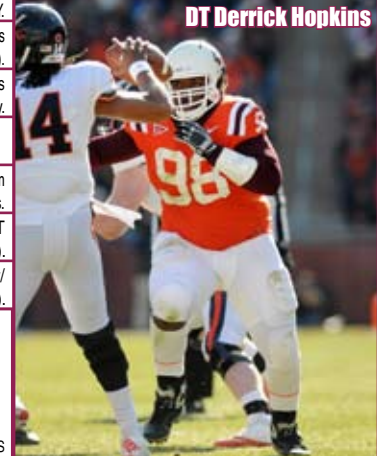
Vs BCS: 32-46-2

Off Bye: 30-27

Off Loss: 49-41-1

ACC - COASTAL BE-'91-03

DT Derrick Hopkins



## LAST 5 BOWL GAMES

VIRGINIA TECH'S ALL-TIME BOWL RECORD 10-16

YR BOWL/TM	WK	LINE	OPPONENT	SCORE
08 Orange	- #21	+2'	Cincinnati	- #12 20-7
09 Chick-fil-A	- #12	-5'	Tennessee	37-14
10 Orange	- #12	+3'	Stanford	- #5 12-40
11 Sugar	- #17	+3	Michigan	- #13 20-23 OT
12 Russell Athletic	-2		Rutgers	13-10 OT

Date	Opponent	LINE	Final Score	W
Aug. 31	† Alabama (Atlanta)	A		
Sep. 7	Western Carolina	G		
Sep. 14	at East Carolina	G		
Sep. 21	Marshall	G		
Sep. 26	at Georgia Tech (Thur)	G		
Oct. 5	North Carolina (HC)	G		
Oct. 12	Pittsburgh	G		
Oct. 19				
Oct. 26	Duke	G		
Nov. 2	at Boston College	A		
Nov. 9	at Miami, FL	G		
Nov. 16	Maryland	G		
Nov. 23				
Nov. 30	at Virginia	G		

**CAREER PASSING LEADERS**  
1. Tyrod Taylor 7,017 '07-'10  
2. Bryan Randall 6,508 '01-'04  
3. Logan Thomas 6,096\* '10-'12

**CAREER RUSHING LEADERS**  
1. Cyrus Lawrence 3,767 '79-'82  
2. Kevin Jones 3,475 '01-'03  
3. Roscoe Coles 3,459 '74-'77

**CAREER RECEIVING LEADERS**  
1. Jarrett Boykin 2,884 '08-'11  
2. Danny Coale 2,658 '08-'11  
3. Ricky Scales 2,272 '72-'74

VT is 1-11 with the L/gm also in the Georgia Dome. VT lost 34-24 ('09 opener). Gm had 7 lead changes. VT led 17-16 into the 4Q but then trailed 27-17. They cut the deficit to 3 only to allow a 74/5pl td drive w/6:35 left. First meeting. The Hokies are 16-1 in Blacksburg openers (lost to James Madison '10). The Cata-mounts went 1-10 LY & the LTY are a combined 12-66 (15%) w/9 losses vs FBS foes by 46 ppg. VT is 9-1 LTH ('11; also L/meeting) VT won 17-10. The gm was tied 10-10 into the 4Q as VT went 89/13pl getting a td w/7:30 left. VT had 20-11 FD & 332-112 yd edges. Hokies are 18-2 in true road openers. The Hokies have won 7 str (L/series loss in 1940). L/gm ('11) VT won 30-10. VT led 13-0 & 23-3 limiting Marshall to 3pl's or less on 9 of their 13 drives. Into '13, the Hokies are 38-1 hosting non-conf foes. VT is 5-1 vs GT incl 3 str wins. LTH VT trailed 26-21 late 3Q but ended the gm scoring 16 unanswered as they limited GT to just 1 yd their final 3 drives. VT is 12-4 on the ACC road the L4Y but was just 1-3 LY. VT has won 7 of 9 as ACC foes but lost LY (L/time VT has dropped 2 str gms was 1939 & '45). The Hokies led 7-0 & only trailed 21-17 mid-2Q but spent most of the 2H down DD's (one of their td's was a 93 yd KR). Old Big East rivals reunite in conf play again. VT has dropped 4 str after opening 7-1. LY the Hokies trailed 21-0 early 2Q being outgained 207-58 and never got closer than 11 pts the rest of the way. VT has won 12 str by an avg of 21 ppg (3 shutouts, L/loss in '81). LY VT trailed 20-0 w/3:12 1Q but from that pt scored 41 unanswered outgaining Duke 509-185. Into '13, the Hokies are 29-7 hosting ACC foes. VT has won 5 str. LY VT trailed by DD's but forced OT w/a 41 yd fg w/1:05. In OT VT got a td & held BC to 6/4pl. The Hokies 6 losses LY were their most since 1992 (2-8-1). Visitor is 1-5 & its the 2nd str season VT travels here. Virginia Tech is 5-11 at Miami w/ the L/2 trips decided by DD's. The Hokies are 8-1 s/'03 in a 2nd of B2B AG's (no byes). VT has won 5 str by 26 ppg. L/gm ('09) VT won 36-9 (up 33-3 into 4Q). VT has won 9 str home finales by 18 ppg.

**Virginia: Commonwealth Cup (VT will have had it for 3,285 str days). VT has won 9 str, longest streak in the 94 gm series (UVA won 8 str from 1895-1904). LTH in the shutout #24 UVA had 6 drives end in #6 VT territory.**

**LANE STADIUM - Grass**  
Built: 1965 • 65,632 (#36) • LY's Capacity: 100.0%

	2003	2004	2005	2006	2007	2008	2009	2010	2011	2012	10 Yr Total
STRAIGHT UP	8-5	10-3	11-2	10-3	11-3	10-4	10-3	11-3	11-3	7-6	99-35
Home	6-1	6-1	5-1	7-1	6-1	6-0	5-1	6-2	5-1	5-1	57-10
Away	2-3	4-0	5-0	3-2	4-1	2-3	4-1	4-0	6-0	1-4	35-14
Neutral	0-1	0-2	1-1	0-0	1-1	2-1	1-1	1-1	0-2	1-1	7-11
vs Conf	4-3	7-1	7-2	6-2	8-1	6-3	6-2	9-0	7-2	4-4	64-20
vs Non-Conf	4-2	3-2	4-0	4-1	3-2	4-1	4-1	2-3	4-1	3-2	35-15
ATS	5-7	9-3	10-3	7-5	7-5-1	6-7	7-5-1	10-4	4-9-1	4-9	69-57.3
Home Fav	4-1	4-2	4-2	3-3	2-3-1	1-4	3-2	5-2	1-5	2-3	29-27-1
Home Dog	1-0	0-0	0-0	1-0	0-0	0-0	1-0	0-1	0-0	1-0	4-1
Away Fav	0-4	2-1	5-0	2-2	2-0	0-0	2-2	4-0	3-3	0-3	20-15-1
Away Dog	0-1	1-0	0-0	0-0	2-1	3-2	0-0	0-0	0-0	0-2	6-6
Neutral	0-1	2-0	1-1	0-0	1-1	2-1	1-1	1-1	0-1-1	1-1	9-8-1
vs Conf	2-5	5-3	7-2	6-2	7-2	4-5	5-3	8-1	3-6	2-6	49-35
vs Non-Conf	3-2	4-0	3-1	1-3	0-3-1	2-2	2-2-1	2-3	1-3-1	2-3	20-22-3
Off SU Win	3-4	6-3	7-3	6-4	6-4	5-4	6-3	9-2	3-8	1-5	52-40
Off SU Loss	1-3	2-0	2-0	1-1	1-0-1	1-2	1-1-1	1-1	0-1-1	3-3	13-12-3



SIGNEES: 5 VHT • 16 HT • 7 IFS

## 2012 STATISTICAL LEADERS

RUSHING	ATT	GAIN	LOST	NET	TD	AVG	PLAYER	TKL	SKS
Logan Thomas	174	726	202	524	9	3.0	Jack Tyler	119	2.5
JC Coleman	109	535	43	492	2	4.5	Kyshoen Jarrett	83	0
Tony Gregory	64	311	12	299	1	4.7	Bruce Taylor	76	5.5
Michael Holmes	70	309	29	280	4	4.0	Detrick Bonner	60	0
Martin Scales	52	203	16	187	2	3.6	Kyle Fuller	52	0
Dyrell Roberts	9	74	0	74	0	8.2	Derrick Hopkins	51	3.5
Marcus Davis	5	72	0	72	0	14.4	Antone Exum	48	0
Demetri Knowles	7	35	11	24	0	3.4	James Gayle	43	5
Mark Leal	2	5	0	5	0	2.5	Michael Cole	43	0
PASSING	ATT	COM	PCT	YDS	TD	INT	QBR	ALONZO TWEEDY	38
Logan Thomas	429	220	51.3	2976	18	16	115.9	Luther Maddy	35
Mark Leal	6	4	66.7	26	0	0	103.1	JR Collins	31
RECEIVING	REC	YDS	AVG	TD	LNG	PLAYER	JERON GOUVEIA-WINSLOW	28	0
Marcus Davis	51	953	18.7	5	85	Tyrell Wilson	27	4.5	2.5
Corey Fuller	43	815	19.0	6	69	Corey Marshall	26	1.5	1.5
Dyrell Roberts	33	398	12.1	1	44	Ronny Vandyke	21	0	2
Demetri Knowles	19	240	12.6	1	42	Dadi Nicolas	17	2	1.5
Ryan Malleck	17	174	10.2	0	30	Antoine Hopkins	13	0	3.5
JC Coleman	21	132	6.3	1	24	Josh Trimble	13	0	0
Randall Dunn	12	128	10.7	3	35	Martin Scales	8	0	0
Tony Gregory	7	60	8.6	0	15	PUNT RETURNS	NO	YDS	AVG
PUNTING	NO	YDS	AVG	FC	NET	BLK	INT	KYSHOEN JARRETT	18
AJ Hughes	79	3204	40.6	18	36.0	1	22	KICK RETURNS	NO
KICKING	XP	1-29	30-39	40-49	50+	TTL	LNG	DEMETRI KNOWLES	21
Cody Journell	34-36	9-9	5-6	6-9	0-1	20-25	42	JC Coleman	19

## 2012 STATS GAME BY GAME

GAME BY GAME												
PTS	BSU	INT	QB	ATT	Foe							
10.5	3	0	13									
4.5	4	0	0	65,632	Georgia Tech							
5	5	0	12									
2	10	1	0	65,632	Austin Peay							
3	5	2	0	48,032	at Pittsburgh							
6.5	1	0	7	65,632	Bowling Green							
15	16	5	0	46,026	† Cincinnati							
6	1	1	2	54,000	at North Carolina							
3	0	0	4	65,632	Duke							
2.5	0	0	13	83,338	at Clemson							
4.5	0	0	20	37,219	at Miami, FL							
2.5	0	0	8	65,632	Florida St							
1.5	0	0	12	34,266	at Boston College							
2	0	0	3	65,632	Virginia							
1.5	1	0	4									
3.5	3	0	1	48,127	† Rutgers							
0	0	0	0	<b>TOTALS</b>								
0	0	0	0	<b>AVERAGES</b>								
13.9	1	0	94	<b>ATTENDANCE</b>		<b>CONF</b>						
28.3	1	0	93	65,632 (#25)		HOME						
21.6	1	0	34	50,144 (#48)		AWAY						

## 2012 STATS GAME BY GAME

Total	Off	Rush	Att	Yds	Avg	Pass	Co-Att	Yds	Sks	Total	Def	Rush	Att	Yds	Avg	Pass	Co-Att	Yds	Sks	by	Net	Yds	To's	Off	Foe	Def	Off	Foe	Gm
Foe	Yds	Yds	Yds	Yds	Yds	Yds	Yds	Yds	Yds	Foe	Yds	Yds	Yds	Yds	Yds	Yds	Yds	Yds	Yds	Yds	Yds	Yds	Yds	Yds	Yds	Yds	Yds	Yds	Grade
326	19	35-96	2.7	21-38	230	2	288	17	55-192	3.5	10-16	96	2	38	+1	#8	-52	#2	165	82.6									
419	22	38-187	4.9	18-26	232	2	221	13	41-159	3.9	8-21	62	1	198	+1	-	-	-	-	69.0									
324	14	26-59	2.3	14-31	265	2	537	27	55-254	4.6	19-28	283	1	-213	-3	#8	-7	-12	-159	64.0									
396	22	43-246	5.7	12-29	150	2	266	12	26-133	5.1	14-42	133	2	130	+1	#3	108	#2	108	94.0									
402	16	34-160	4.7	17-30	242	1	495	24	32-103	3.2	20-43	392	1	-93	-1	#6	15	#12	-59	76.1									
394	22	25-40	1.6	26-49	354	1	533	27	45-339	7.5	17-30	194	1	-139	-1	#8	5	#10	-52	73.2									
525	19	39-269	6.9	14-23	256	3	329	20	29-22	0.8	25-42	307	5	196	+3	#5	61	#3	87	87.8									
406	23	49-199	4.1	15-29	207	2	295	15	45-135	3.0	12-21	160	5	111	-3	#6	11	#1	236	89.9									
421	24	45-222	4.9	19-37	199	1	347	15	28-157	5.6	14-30	190	0	74	-3	#9	-71	#4	102	76.0									
385	16	36-87	2.4	19-34	298	2	311	21	25-115	-0.6	25-42	326	5	74	-1	#3	141	#2	173	95.9									
401	18	48-154	3.2	16-33	247	0	296	20	45-167	3.7	13-30	129	7	105	+1	#8	-60	#3	59	76.4									
303	23	57-174	3.1	18-38	129	3	217	7	20-30	1.5	17-36	187	2	86	+1	#8	-55	#1	196	77.8									
196	12	32-3	0.1	15-40	193	4	196	14	39-67	1.7	17-40	129	3	0	-1	#11	-125	#1	145	80.9									
498	250	507-1896	3.7	224-437	3002	25	4331	232	485-1743	3.6	211-421	2588	35	567	-5	#7	-31	#4	999	80.3									
377	192	39-146	3.7	51-31	231	5.7%	333	17.8	37-134	3.6	50-119	199	8.3%	-44	-0.4	#67	-3	#13	83	#51									
395	205	42-155	3.7	52-7%	240	5.0%	327	17.8	37-128	3.5	53-8%	199	10.9%	68	-2	#70	-3	#4	121	82.4									
392	20.2	41-177	4.3	54.3%	216	7.4%	272	15.0	33-67	2.7	49.7%	185	8.5%	120	+6	#44	40	#3	146	84.5									
363	18.4	37-120	3.2	49.4%	244	4.4%	386	20.3	41-175	4.2	50.5%	211	8.1%	-22	-11	#81	-33	#29	39	76.8									