

FLORIDA GATORS

POSITION OUTLOOK FOR 2010

QUARTERBACKS - Tim Tebow (PS#3), who runs like a FB, mostly ran QB draws as a true frosh. Tebow had a record breaking 2007 becoming the first soph to win the Heisman and was the first player in NCAA history with over 20 rush and 20 pass TD's in the same season. He set the school record for total offense and an NCAA record for rushing TD's by a QB. Tebow played with injuries in both '07 (shoulder) and '08 (knee). HC Urban Meyer did his best to limit Tebow's carries in '08 but he was still the #1 rusher with 673 (3.8) while throwing for 2,746 (64%) with an outstanding 30-4 ratio. Last year Tebow became the first player ever to be invited to the Heisman ceremony 3 times. He leaves with many school, SEC and NCAA records including most TD's rushing (beat Herschel Walker). Tebow threw for 2,895 (67.8%) with a 21-5 ratio and was the #1 rusher (910, 4.2). John Brantley saw most of his action vs CS, Troy and FIU. He played 10 gms in '08 throwing for 235 (64%, 3-1), but only 7 last year. He hit 36-48 (75%) for 410 yds with a 7-0 ratio but does not have Tebow's mobility. With Tebow moving on to the NFL (#1DC DEN) Brantley's backups are two true frosh. While I expect Brantley to have a good year, he is replacing one of the greatest players in college football history.

RUNNING BACKS - In Meyer's first 3 years ('05-'07), he was very unhappy with the production of his RB's. In '07 Kestahn Moore led the RB's (#3 tm) with 580 (5.6). In '08 Meyer used 3 different RB's in USC transfer Emmanuel Moody (PS#6), true frosh track champ Jeff Demps (PS#28) and rFr Chris Rainey (PS#15). While individually the stats were not overwhelming, the combination was outstanding with Rainey having 652 (7.8), Demps 605 (7.8) and Moody (inj/plagued) 417 (7.2). The 3VHT's combined for 1,674 and 7.6 ypc and all 3 ret'd last yr. Demps was the #1 RB rusher with 745 (7.5) while Rainey added 575 (6.5) and Moody 378 (6.5) combining for 1,698 (6.9). All three return again and Mike Gillislee (PS#46), who beat Rainey in a 40 yd dash, had 267 (8.6) as a true. Rainey worked at the "Percy" position (slot receiver) in spring. Not listed below are FB's TJ Pridemore (6'1" 247 So, PS#75) and Steven Wilks (6'1" 235 Jr, PS#236). It looks like the Gators will finally have a RB led team in rushing for the first time since '06.

RECEIVERS - In 2008 Percy Harvin (PS#1), who led in '07 with 858 (14.5) was #2 with 644 (16.1). Louis Murphy, who had 548 (14.8) in '07 was #1 with 655 (17.2). Last year both Harvin (MIN) and Murphy (OAK) were st'rs in the NFL and the Gators, who ret'd almost everyone from their '08 Title team had the biggest question marks in this unit. TE Aaron Hernandez (PS#1) won the Mackey Award and led in rec's with 68 (12.5). Riley Cooper (PS#15) led in yards (961, 18.8) and soph Deonte Thompson (PS#4) had 343 (14.3). David Nelson (PS#19) added 291 (11.6). This year they lose Hernandez (13 st, #4DC NE), Cooper (14 st, #5DC PHI), Nelson (9 st), Brandon James (4 st, 215 yd) but add 6'3" Carl Moore (PS#1JC, RS LY, 8 rec spg gm) and rFr Andre Debosc (PS#2). They are less exp'd but could be more productive.

OFFENSIVE LINE - In 2007 UF had to replace 2 OL st'rs and Maurice Pouncey became the first true frosh OL to start an opener here since 1992. With Tebow and Harvin combining for 1,659 rush yds, the Gators averaged 200 ypg rush (5.3), their best ypg since '89 (13 sks, 3.6%). In '08 they had 3 st'rs back and added LT Phil Trautwein (2nd Tm SEC '06, inj '07). The team improved to 231 ypg (5.9) with 16 sks (4.9%). Last year they had to replace 2 st'rs and figured to have one of the top OL's in the NCAA. True frosh Xavier Nixon (PS#1) was called the most athletic lineman and started the final 5. The line paved the way for 222 ypg rush (5.6) but allowed 30 sks (8.2%). This year they lose 1st Tm AA C Maurice Pouncey (14 st, 3Y st'r,

#1DC PIT) but his twin brother Mike (PS#44) moves to C from OG. Not in the PSL are Shawn Schmieder (6'4" 272 Jr), Gary Beemer (5'11" 265 Sr) and William Steinmann (6'5" 272 Jr). This group has 87 career starts (8 VHT's in the 2 deep) and while their rushing numbers will drop with a less mobile QB, they remain one of the NCAA's elite OL's.



DEFENSIVE LINE - In the Gators' 2006 National Title year they had a veteran DL that yielded just 73 ypg rush (2.7), their best since 1997 (69, 2.1). In 2007 they had to replace 4 NFL DC's (#1, #3, #4, #4) but still allowed just 103 ypg rush (3.0). In '08 they had to replace 2 st'rs (#1DC) and then a ret st'r and a proj st'r missed most of '08. UF allowed 105 ypg (3.4) with 34 sks. Last year the entire 2 deep ret'd but they suffered through an inj and susp plagued year (no DL w/13 sts) with only 3 having more than 8 sts. UF still slightly improved to 100 ypg (3.1) with 39 sks. If you take away the SEC Title game debacle, they allowed just 88 ypg rush (2.9). This year they lose 1st Tm SEC DE Carlos Dunlap (12 st, 38 tkl, 9 sk, #2DC CIN), 1st Tm SEC DE Jermaine Cunningham (12 st, 34 tkl, 7 sk, #2DC NE) and DT Troy Epps (5 tkl). All 4 proj st'rs are VHT's and they get back DT Lawrence Marsh (13 sts '08). This is still one of the premier DL's (8 w/st exp) but is a little less exp'd. Not in the PSL are Glen Watson (6'2" 299 So), Brandon Antwine (6'0" 297 Sr, PS#73) and Kedric Johnson (6'4" 230 rFr, PS#172).

LINEBACKERS - In 2007 and 2008 the Gator LB's had 77 starts combined. All 77 starts ret'd in '09 and 10 of the top 11 LB's were VHT's. This year they lose Brandon Spikes who earned 1st Tm AA (12 st, #3 tkl'r, 6.5 tfl, #2DC NE), WLB Ryan Stamper (14 st, #1 tkl'r, 5.5 tfl) and Dustin Doe (2 st '09, #5 tkl'r, 16 st '06-08). This is still a quality unit (9 VHT, 3 deep) including AJ Jones (29 car sts) and Brandon Hicks (9 car sts) but they were just the #9 and #11 tkl'rs last year.

DEFENSIVE BACKS - The Gators had to replace 3 st'rs in '06 but moved up to #3 in my PDR. In '07 they had to replace 3 st'rs (1st and 2nd Tm AA). UF plummeted to #72. In '08 when I picked the Gators #1 in my magazine, the most FAQ was "with that secondary?" I noted that they only had to replace 1.5 st'rs and I expected significant improvement and UF moved up to #5 (12-26 ratio). Last year the unit ret'd intact including the NCAA's top CB (Joe Haden). UF finished #7 (10-20 ratio). This year they lose 1st Tm AA CB Haden (14 st, 68 tkl, 4 int, 10 pbu, #1DC CLE), FS Major Wright (12 st, 32 tkl, 3 int, #3DC CHI) and CB Markihe Anderson (1 st, 20 tkl, 1 sk). Taking over for Wright is Will Hill (PS#2) who is considered one of the team's best defensive players and should thrive with 1/2 of their super CB tandem returning in Janoris Jenkins. Four VHT true frosh were IFS. Despite the losses, this is still clearly one of the top secondaries again.

SPECIAL TEAMS - Urban Meyer coaches the ST unit himself. In his first 4 years ('05-'08) the Gators were #26, #55, #20 and #13 in my ST rankings. He uses a lot of st'rs on the units.

KR Brandon James avg 23.1 on KR's (13.8 PR) in '08 and last year got the first UF KR TD since 1999 (123 gm streak). He had 4 career PR TD's. K Caleb Sturgis (PS#6) hit 22-30 FG's (long 56, 3 miss 50+). Sturgis had 10 TB's on 99 KO's. Punter Chas Henry improved to 43.4 with an amazing 41.0 net. After 8 games they had allowed zero PR yards. UF finished #9 in my ST rankings. This year they lose James but have plenty of speed to fill in on returns and have one of the nation's best P/K combos.

COACHES - Urban Meyer became a HC in 2001 and was 17-6 at Bowling Green ('01-'02). He moved on to Utah (22-2) and coached a 13-0 season with a BCS bowl win (#4 AP). Meyer has 2 Nat'l Titles in 5 yrs here. He took a leave of absence after the bowl for health reasons but was back for the spring. OC Steve Addazio was the interim HC while Meyer was gone and was the TE/OL coach here since '05 before his promotion to OC in '09. Charlie Strong was the DC here for 7 yrs but takes over as Louisville's HC. George Edwards was hired as the new DC in Jan but he left (now DC of BUF Bills) and Teryl Austin (DB coach Arizona NFL L3Y) is the main DC with promoted safeties coach Chuck Heater (on Meyer's staff since '04) as co-DC.

PHIL'S FORECAST

In 2005 Urban Meyer inherited 15 st'rs. He was 6-0 at home and swept Fla St, Tenn and Georgia for just the 4th time in school history. They finished 9-3 (#12). Everything went their way in the magical 2006 National Title year with many close and fortuitous wins. They narrowly got to the Title game in the BCS vote but dominated Ohio St allowing just 82 yards. In 2007 the Gators were the favorite to win SEC (#6 AP). I was beat up pretty good by Gator fans over the summer as I had UF tied at 3rd in the SEC East and #14 in my Top 25 which was lower than any other source documented by stassen.com. The Gators finished just 9-4 and #13 after their Capital One Bowl loss. In '08 Georgia was the AP #1 but numerous factors had me calling for the Gators to not only top them in the SEC East but to finish #1 in the country. The Gators were a stronger team in '08 than they were in their 2006 National Title year. In 2006 they outgained SEC foes by 42.5 ypg and in '08 they were #1 (+133.4 ypg). In '06 their average win was only 29.7-13.5. In '08 it was a dominating 43.6-12.9. The Gators' only loss in '08 was vs Ole Miss, a game in which UF had a 443-325 yd edge and was SOD on a late 4th & 1 passing up a long FG. Unlike '06 which featured weekly escapes, '08 did not have a single win by less than 10. Everyone always asks me which team is my favorite and I reply, "the team I pick #1" so I was clearly a Gator fan in the BCS Title game when they beat Okla 24-14 (480-363 yd edge). Florida benefitted from +22 TD's in '08 and only had 3 SEC HG's in '09 but had all 11 st'rs back on defense and 7 on offense including Tim Tebow. All 9 sets of my power ratings called for Florida to go 12-0. The Gators received 56 of 60 1st place votes in the preseason AP poll, the highest ever (USC 95.4% in '07). The Gators did indeed go 12-0 even surviving a Tebow concussion. Tebow was questionable prior to their trip to #4 LSU in Death Valley at night but UF still prevailed with 327-162 yd edge ending LSU's streak of 32 straight SAT night home wins. They had a couple of narrow escapes as they got some fortunate ref calls in their 3 pt home win over Ark and only led SC by 3 in the 4Q. They still were favored in the SEC Title game and 1 step from reaching the National Title game but Alabama dominated (outgained 490-335). Prior to the bowl, Urban Meyer announced he was quitting then said he would take a leave of absence instead. Undefeated #4 Cincy was without HC Brian Kelly. The Gators played with passion in Tebow's final game and routed the Bearcats 51-24 with a 659-246 yd edge. UF was a league best +140.4 ypg in SEC play. This year they have just 11 ret st'rs and must replace Tebow. They also must travel to Alabama in SEC play. This year's team is not as deep or exp'd as the '09 version but has my #1 rated D in the SEC and they are still legitimate National Title contenders.

OFFENSE			JERSEY # IN ORANGE	2010 PROJECTED STARTING LINEUP										JERSEY # IN ORANGE	DEFENSE			National Title contenders.		TOP NEWCOMERS FOR 2010																																																																																																																																																																																																																																																																											
QB 12 John Brantley Jr.			6-3 218	PS#4. 10 gm, 235 (64%), 3-1 ratio as rFr. 7 gm, 410 (75%), 7-0, 67 rush (5.2) LY. 13 Trey Burton PS#26. IFS. Tyler Murphy PS#246.										DE 94 Justin Trattou Sr.	6-3 252	PS#11. 14 st, 47 tkl, 5 sk 2Y. 4 st, 17 tkl, 4.5 tfl LY. Ronald Powell PS#1. 34 Lerentee McCray (6'2" 240 Jr) PS#17. 10 tkl 2Y. Neiron Ball IFS.										DL	Ronald Powell 6-4 250 PS#1	DL	Sharrif Floyd 6-3 311 PS#3																																																																																																																																																																																																																																																																		
RB 2 JEFF DEMPS JR.			5-8 184	PS#28. 17 st, 1350 (7.6) 2Y, 3rd Tm SEC LY.										NT 99 OMAR HUNTER SO.	6-0 307	PS#8. 3 gm true. 11 st, 17 tkl, 3rd Tm Fr AA LY. Sharrif Floyd PS#3. 90 Lawrence Marsh (6'5" 288 Sr) PS#85. 13 st, 33 tkl, 2Y. 8 tkl, 9 gm (inj) LY.										DB	Matt Elam 5-10 204 PS#1	DB	Dominique Easley 6-3 270 PS#6																																																																																																																																																																																																																																																																		
21 Emmanuel Moody (5'11" 212 Sr)			PS#6. 2 st, 795 (6.9) 2Y at UF. Mike Gillislee (5'11" 191 So)	PS#46.										SL 16 JAYE HOWARD JR.	6-3 295	PS#23. 8 tkl, 2.5 tfl rFr. 4 st, 29 tkl, 3 tfl LY.										DB	Joshua Shaw 6-0 189 PS#7	RB	Mack Brown 5-11 190 PS#8																																																																																																																																																																																																																																																																		
SL 3 Chris Rainey Jr.			5-9 176	PS#15. 3st RB, 1227 rush, 198 rec 2Y. 4 Andre Debosc (5'11" 183 rFr) PS#2. 83 Solomon Patton PS#37. IFS. Chris Dinkley is PS#11.										92 Terron Sanders (6'1" 312 Sr)	PS#69. 12 st, 25 tkl, 2Y. 8 st, 19 tkl LY. Dominique Easley PS#6.	DE 96 William Green Jr.	6-3 250	PS#5. 7 tkl true. 1 st, 3 tfl LY. 44 Duke Lemmens (6'3" 253 Sr) PS#10. 13 tkl 2Y. 1 st, 10 tkl LY. Lynden Trail PS#41. 91 Earl Okune (6'6" 280 So) PS#65.										OL	Chaz Green 6-6 290 PS#5	TE	Gerald Christian 6-3 240 PS#2																																																																																																																																																																																																																																																																
WR 6 DEONTE THOMPSON JR.			5-11 203	PS#4. 12 st, 612 (14.6) 2Y. 82 Omarius Hines (6'0" 219 So) PS#30. 172 (12.3). Stephen Allie (6'5" 214 rFr) PS#55. TJ Lawrence (6'1" 193 So) PS#37.										SL 16 AJ JONES SR.	6-1 226	PS#41. 18 st, 7 tkl, 2Y, 11 tfl, 37 tkl LY. 26 Lorenzo Edwards (6'1" 246 Sr) PS#16. 30 tkl 2Y. 13 tkl LY. 13 Dee Finley (6'2" 208 So) PS#20. 7 tkl true.										WR	Adrian Coxson 6-2 195 PS#15	DB	Jonathan Dowling 6-4 185 PS#18																																																																																																																																																																																																																																																																		
WR 9 Carl Moore Sr.			6-3 222	PS#1JC. 1 st, 184 (13.1) '08. RS (inj) LY. 65 Frankie Hammond (5'11" 178 So) PS#53. 4 rec rFr. 7 Justin Williams (6'0" 205 Sr) PS#22. 24 tkl, 6 rec 3Y.										MLB 52 Jonathan Bostic So.	6-1 236	PS#14. 18 tkl, 12 gm as true. 54 Brendan Beal (6'3" 246 So) PS#3. Out L2Y (inj). Michael Taylor PS#31. 46 Michael Ross (5'11" 222 So).										OL	Ian Silberman 6-4 271 PS#24	DB	Jordan Haden 5-11 198 PS#20																																																																																																																																																																																																																																																																		
TE 11 Jordan Reed rFr.			6-3 240	PS#25QB. TE/Wildcat QB. 32 Gerald Christian PS#2. IFS. 80 Desmond Parks (6'4" 238 rFr) PS#45. Michael McFarland PS#26.										6'2" 228 Sr) PS#19. 6 st, 47 tkl, 2Y, 3 st, 32 tkl, 4 sk LY. 32 Scott Peck (6'1" 216 So) PS#405.	CB 1 JANORIS JENKINS JR..	5-11 186	PS#10. 12 st, 39 tkl true. 13 st, 38 tkl LY. 14 Jaylen Watkins PS#11. IFS. Cody Riggs PS#28. 27 Adrian Bushell (5'9" 183 So) PS#43. 14 tkl rFr.										WR	Solomon Patton 5-8 171 PS#37	LB	Michael Taylor 6-1 213 PS#31																																																																																																																																																																																																																																																																	
C 55 MIKE POUNCEY SR.			6-4 310	PS#44. 4 st DT true. 14 st RG '08. 14 st OG, 2nd Tm AA LY. 58 Nick Alajajin (6'4" 295 rFr) PS#11. LS 59 Christopher Guido (6'2" 223 rFr).										CB 29 Joshua Shaw Fr.	6-0 189	PS#7. IFS. Jeremy Brown (5'10" 182 So) PS#48. Mosses Jenkins (6'2" 188 Sr) 22 tkl 3Y. 34 Tim Clark (5'9" 193 rFr). Corey Henderson (6'0" 170 Jr).										QB	Tyler Burton 6-2 219 PS#26	WR	Quinton Dunbar 6-3 170 PS#47																																																																																																																																																																																																																																																																		
RG 66 James Wilson Jr.			6-3 315	PS#10. 10 gm rFr. 4 st LG, 14 st LY. 78 David Young (6'4" 304 So) PS#167. 13 gm rFr. 50 Sam Robey (6'4" 293 So) PS#82DL. 13 gm rFr.										SS 35 AHMAD BLACK SR.	5-9 189	PS#59. 7 tkl true. 14 st, 59 tkl, 7 int '08, 12 st, 70 tkl, 4th Tm SEC LY. 22 Matt Elam PS#1. IFS. 24 Josh Evans (6'1" 191 So) PS#54. 6 tkl true.										DB	Leon Orr 6-4 324 PS#35	DB	Lynden Trail 6-7 220 PS#41																																																																																																																																																																																																																																																																		
LG 57 CARL JOHNSON SR.			6-5 360	PS#2. 11 gm rFr. 8 st LG '08. 14 st (9 LT, 5 LG) LY. 74 Maurice Hurt (6'3" 320 Sr) PS#104. 6 st at OG 3Y. Jonathan Harrison (6'3" 305 rFr) PS#65.										CB 10 WILLIH HILL JR.	6-1 204	PS#2. 48 tkl, 2 int true. 5 st, 14 gm, 42 tkl LY. 39 Jordan Haden PS#20. IFS. Jonathan Dowling PS#18. Miguel Carodine (5'10" 210 Sr). 1 tkl 3Y.										WR	Robert Clark 5-8 172 PS#117	LB	Darrin Kitchens 6-3 215 PS#134																																																																																																																																																																																																																																																																		
RT 76 MARCUS GILBERT SR.			6-5 322	PS#30. 3st OG, 26 gm 2Y. 14 st RT, 4th Tm SEC LY. 77 Ian Silberman PS#24. IFS. Chaz Green is PS#5. 63 Cole Gilliam (6'4" 311 rFr).										P 17 CHAS HENRY SR.	6-3 222	PS#20. 37 punts (39.3), 13 gm true. 44 (43.4) '08. 40 net '09, 2nd Tm SEC LY. 40 David Lerner (5'11" 209 So). 98 Zachary Brist (6'1" 168 So).										QB	Tyler Murphy 6-2 190 PS#246																																																																																																																																																																																																																																																																				
LT 73 XAVIER NIXON SO.			6-5 300	PS#1. 5 st LT, 10 gm, SEC Fr Tm true. 71 Matt Patchan (6'6" 273 Jr) PS#8. 1 st DT true. 4 gm (ACL) LY. 67 Jon Halapio (6'3" 305 rFr) PS#116.																																																																																																																																																																																																																																																																																											

FLORIDA GATORS

Gainesville, Florida
Weather (904) 741-4311 Ext. 1

URBAN MEYER (Career 96-18) Bowls: 6-1
6th Year at Florida Bowling Green '01-'02
Utah '03-'04

Phil's Homefield Edge-5.5 2010 Schedule Difficulty-#18		T	L	Final Score		W
Date	Opponent	U	F	UF	Opp	L
Sep. 4	Miami, Oh	G				
Sep. 11	USF	G				
Sep. 18	at Tennessee	G				
Sep. 25	Kentucky	G				
Oct. 2	at Alabama	G				
Oct. 9	LSU	G				
Oct. 16	Mississippi St (HC)	G				
Oct. 23						
Oct. 30	† Georgia (Jacksonville)	G				
Nov. 6	at Vanderbilt	G				
Nov. 13	South Carolina	G				
Nov. 20	Appalachian St	G				
Nov. 27	at Florida St	G				
Dec. 4						

CAREER PASSING LEADERS
1. Chris Leak 11,213 '03-'06
2. Danny Wuerffel 10,875 '93-'96
3. Shane Matthews 9,287 '89-'92

CAREER RUSHING LEADERS
1. Errett Rhett 4,163 '90-'93
2. Emmitt Smith 3,928 '87-'89
3. Neal Anderson 3,234 '82-'85

CAREER RECEIVING LEADERS
1. Carlos Alvarez 2,563 '69-'71
2. Jabar Gaffney 2,375 '00-'01
3. Andre Caldwell 2,349 '03-'07

UF has won 20 consecutive season openers winning the last 12 by an avg of 39 ppg. In the only previous meeting, Miami won 16-7 in the 1973 Tangerine Bowl.

First meeting between these in-state schools. UF is 8-3-2 vs current Big East teams & destroyed BE champ Cincy 51-24 in the Sugar Bowl LY finishing w/a 659-246 yd edge.

Meyer is the only Florida HC to begin his career with 5 consecutive wins over Tenn. The team that has rushed for more yds has won 7 str & 19 of the last 20 meetings.

Florida leads the all time series 43-17 and has not lost in the Swamp to UK since 1979. The Gators have outscored the Wildcats by a combined 104-12 the last 2 years.

Rematch of the L2 SEC championships. In each of the last 2 Champ gms the #1 ranked team lost to the #2 ranked team as LY #1 UF trailed 12-10 late 2Q getting outscored 20-3.

UF is 9-2 at home vs LSU. The home team won 4 straight before UF's win LY. The 13 pts UF scored vs LSU last year were the 2nd fewest scored in the Meyer era.

The home team is 10-1 in this series with the loss LY. Last year Tebow threw 2 ints returned for TDs, but Florida still pulled out a 29-19 win (1st win in Starkville since 1985).

BONUS: Meyer's teams are 18-2 with more than a week to prepare.

Since 1933 every gm has been in Jacksonville except '94 & '95. The L2Y UF has outscored GA by 60 pts but only outgained them by 63 yds. UF has won 10 of 12 & 17 of the L20 in this rivalry.

UF has won 19 in a row over Vanderbilt. Last year UF outgained VU 375-199 but only had a 15-12 FD edge in a 27-3 win. TE Hernandez had a career high 120 rec yds.

UF has won 18 of 19 in this series. LY UF led 17-14 in the 4Q & picked off Garcia at the UF21. Last time here, UF handed Spurrier the worst loss of his career as a HC, 56-6.

First meeting. Florida is 26-2 vs current Southern Conf teams. ASU is 1-11 all-time vs SEC teams. The Mountaineers were 11-3 LY as champs of the Southern Conference.

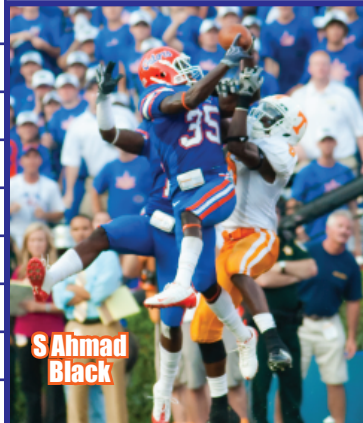
Into 2010, UF is 14-1 vs the "Big 3" (Tenn, UGA, FSU) under Meyer. UF has won 6 in a row over FSU for the 1st time since '81-'86 & has outgained FSU by 259 ypg the last 3.

Meyer AT FLORIDA/OVERALL
57-10 / 96-18 SU 12-3 / 12-3 Vs Top 10
32-2 / 53-4 Home 18-6 / 20-6 Vs Top 25
15-5 / 31-11 Away 10-1 / 20-3 Vs BCS Tms
10-3 / 12-3 Neutral 11-1 / 18-2 Off A Bye
34-9 / 58-15 Vs Conf 8-1 / 14-2 Off A Loss

2009 RECORD: (13-1)
RETURNING STARTERS: OFFENSE: 6
DEFENSE: 5
LETTERMEN:

Returning: 42 (21,19,2)
Lost: 25 (11,11,3)
2009 AVERAGE ATTENDANCE: 90,635 (#9)

SEC - EAST DIVISION



STADIUM: BEN HILL GRIFFIN STADIUM (88,548) (#11)
PLAYING SURFACE: GRASS

	2000	2001	2002	2003	2004	2005	2006	2007	2008	2009	10Yr Total
STRAIGHT UP	10-3	10-2	8-5	8-5	7-5	9-3	13-1	9-4	13-1	13-1	100-30
Home	6-0	5-1	5-2	3-3	5-1	6-0	7-0	6-1	6-1	7-0	56-9
Away	2-2	3-1	2-2	4-1	2-2	1-3	3-1	3-1	4-0	4-0	28-13
Neutral	2-1	2-0	1-1	1-1	0-2	2-0	3-0	0-2	3-0	2-1	16-8
vs Conf	8-1	6-2	6-2	6-2	4-4	5-3	8-1	5-3	8-1	8-1	64-20
vs Non-Conf	2-2	4-0	2-3	2-3	3-1	4-0	5-0	4-1	5-0	5-0	36-10
ATS	9-4	8-4	4-9	5-7	7-5	5-6	1-5	7-1	8-4	12-1	76-53-2
Home Fav	5-1	4-2	2-5	1-3	4-2	3-3	3-2	5-1	5-1	3-3	35-23-1
Home Dog	0-0	0-0	0-0	0-1	0-0	0-0	0-0	0-0	0-0	0-0	0-1
Away Fav	2-1	3-1	0-2	0-2	1-1	0-3	0-4	2-1	4-0	2-2	14-17
Away Dog	0-1	0-0	1-1	3-0	2-0	1-0	0-0	1-0	0-0	0-0	8-2
Neutral	2-1	1-1	1-1	1-1	0-2	1-0	1-1	2-1	0-2	3-0	13-10-1
vs Conf	8-1	5-3	3-5	3-5	4-4	2-5	1-2	5-3	8-1	3-6	43-39-2
vs Non-Conf	1-3	3-1	1-4	2-2	3-1	3-1	3-1	3-1	4-0	4-0	27-14
Off SU Win	7-3	6-3	3-5	3-5	4-3	4-4	4-6	1-4	10-1	6-6	52-40-1
Off SU Loss	2-0	1-1	0-4	1-2	2-2	1-1	0-1	3-0	1-0	1-0	12-11-1

2009 STATISTICAL LEADERS																
RUSHING							PASSING					RECEIVING				
	ATT	GAIN	LOST	NET	TD	AVG	PLAYER	TKL	SKS	TFL	PBU	INT				
Tim Tebow	217	1088	178	910	14	4.2	Ryan Stampler	78	1.5	4	1	2				
Jeffery Dumps	99	763	18	745	7	7.5	Ahmad Black	70	1	1.5	5	1				
Chris Rainey	89	595	20	575	5	6.5	Joe Haden	68	3	2	10					
Emmanuel Moody	58	390	12	378	3	6.5	Brandon Spikes	68	3	3.5	3	2				
Mike Gillislee	31	267	0	267	1	8.6	Dustin Doe	51	1	0.5	4	1				
Brandon James	20	112	3	109	0	5.4	Will Hill	42	1.5	0	1	0				
John Brantley	13	78	11	67	0	5.2	Carlos Dunlap	38	9	1.5	6	0				
PASSING	ATT	COMP	PCT	YDS	TD	INT	Janoris Jenkins	38	0	3	6	2				
Tim Tebow	314	213	67.8	2895	21	5	AJ Jones	37	3	1.5	2	3				
John Brantley	48	36	75.0	410	7	0	Jermaine Cunningham	34	7	5	0	0				
RECEIVING	REC	YDS	AVG	TD	LONG		Brandon Hicks	32	4	1	2	0				
Riley Cooper	51	961	18.8	9	80		Major Wright	32	0	0	2	3				
Aaron Hernandez	68	850	12.5	5	64		Jaye Howard	29	1.5	1.5	0	0				
Deonte Thompson	24	343	14.3	4	77		Markihe Anderson	20	1	0	0	0				
David Nelson	25	291	11.6	2	30		Terron Sanders	19	0	2	1	0				
Brandon James	24	215	9.0	1	32		Jonathan Bostic	18	0	0	0	0				
Omaris Hines	14	172	12.3	1	25		Justin Trattou	17	2	2.5	1	1				
Chris Rainey	10	161	16.1	1	33		Omar Hunter	17	0	2	0	0				
Cade Holliday	6	102	17.0	1	33		Wendy Pierre-Louis	15	0	1	1	0				
Frankie Hammond	4	57	14.2	1	31		Adrian Bushnell	14	0	0	1	1				
Jeffery Dumps	8	52	6.5	0	11		PUNT RETURNS	NO	YDS	AVG	TD					
PUNTING	NO	YDS	AVG	FC	NET	BLK	In20	Brandon James	33	244	7.4	0				
Chas Henry	34	1476	43.4	12	41.0	0	15	KICK RETURNS	NO	YDS	AVG	TD				
KICKING	XP	1-29	30-39	40-49	50+	TOTAL	LONG	Brandon James	29	156	26.1	1				
Caleb Sturgis	44-47	8-10	8-11	4-4	2-5	22-30	56	Chris Rainey	5	744	28.8					



YR	BOWL/TM RANK	LINE	OPPONENT	SCORE	LAST 5 BOWL GAMES
05	Outback - #16	E	Iowa - #25	31-24	
06	BCS Championship - #2	+7	Ohio St - #1	41-14	
07	Capital One - #9	-11	Michigan	35-41	
08	BCS Championship - #1	-6	Oklahoma - #2	24-14	
09	Sugar - #5	-12	Cincinnati - #4	51-24	

OFFENSE - LAST 7 YEARS - DEFENSE											
YR	ST	TS	PTS	OFF	RUSH	YPC	PASS	YPP	VS	TURN	DEF
2008	7	35.9	458	222	5.6	236	68.4	12.8	30	+7	11
2009	7	43.6	445	231	5.9	214	64.1	10.2	16	+22	7
2007	5	42.5	457	200	5.3	257	66.5	10.8	13	+5	2
2006	6	29.7	396	160	4.7	236	63.9	13.3	23	+5	6
2005	7	28.6	374	147	3.9	227	62.6	13.1	35	+18	8
2004	5	31.8	427	156	4.5	271	59.7	13.4	19	+4	4
2003	6	30.0	391	146	4.2	245	60.1	13.0	27	+7	3

OFFENSE - 2009 STATS BY GAME - DEFENSE											
UF 2009	Foe	Total	Off	FD	Att	Yds	Avg	Co	Att	Yds	Sks
90,621	Charleston Southern	624	26	33	369	11.2	18	27	255	0	323
90,349	Troy	663	32	46	291	6.3	25	36	372	2	139
90,894	Tennessee	323	20	44	208	4.7	14	19	115	3	210
71,011	at Kentucky	495	25	52	362	7.0	9	16	133	2	179
93,129	at LSU	321	22	48	193	4.0	11	16	134	0	162
90,508	Arkansas	397	24	46	136	3.0	17	27	255	6	357
57,178	at Mississippi St	376	18	47	249	5.3	12	22	127	3	237
84,604	† Georgia	374	22	40	210	5.3	15	21	164	2	286
90,694	Vanderbilt	375	15	37	148	4.0	18	23	227	4	199
79,297	at South Carolina	339	17	39	140	3.6	14	25	199	4	247
90,473	FIU	584	30	36	223	6.2	26	38	361	0	180
90,907	Florida St	545	22	39	311	8.0	19	23	234	2	281
75,514	† Alabama	335	13	14	88	6.3	20	35	247	0	490
65,207	† Cincinnati	659	28	34	177	5.2	31	36	482	2	246
TOTALS		6410	314	555	3105	5.6	249	364	3305	30	3536
AVERAGES		458	22.4	40	222	5.6	68.4%	236	8.2%	253	14.9
HOME		501	24.1	40	241	6.0	71.0%	260	8.8%	241	13.3
AWAY		415	20.7	39	203	5.2	65.5%	212	7.6%	264	16.4

UF Pre #10 2005 RESULTS				UF Pre #7 2006 RESULTS				UF Pre #6 2007 RESULTS				UF Pre #5 2008 RESULTS				UF Pre #1 2009 RESULTS			
Rank	Opponent	Line	Post #12 Score	Rank	Opponent	Line	Post #1 Score	Rank	Opponent	Line	Post #13 Score	Rank	Opponent	Line	Post #1 Score	Rank	Opponent	Line	Post #3 Score
#10	Wyoming	-24	32-14	#7	Southern Miss	-20	34-7	#6	WKU	NL	49-3	#5	Hawaii	-34	56-10	#1	Charleston Southern	-59	62-3
#10	Louisiana Tech	-29	41-3	#7	UCF	-23	42-0	#4	Troy	-26	59-31	#5	Miami, FI	-22	26-3	#1	Troy	-36	56-6
#6	Tennessee - #5	-6	16-7	#7	at Tennessee - #13	-3	21-20	#5	Tennessee - #22	-7	59-20	#4	at Tennessee	-27	30-6	#1	Tennessee	-30	23-13
#5	at Kentucky	-23	49-28	#5	Kentucky	-26	26-7	#3	at Mississippi	-23	30-24	#4	Mississippi	-22	30-31	#1	at Kentucky	-21	41-7
#5	at Alabama - #15	-3	3-31	#5	Alabama	-15	28-13	#4	Auburn	-17	17-20	#12	at Arkansas	-26	38-7	#1	at LSU - #4	-8	13-3
#13	Mississippi St	-27	35-9	#2	LSU - #9	-1	23-10	#9	at LSU - #1	-7	24-28	#11	LSU - #4	-6	51-21	#1	Arkansas	-24	23-20
#11	at LSU - #10	+6	17-21	#2	at Auburn - #11	-2	17-27	#14	at Kentucky - #8	-7	45-37	#5	Kentucky	-25	63-5	#2	at Mississippi St	-21	29-19
#16	† Georgia - #4	-4	14-10	#9	† Georgia	-13	21-14	#10	† Georgia - #20	-7	30-42	#5	† Georgia - #8	-6	49-10	#1	† Georgia	-14	41-17
#13	Vanderbilt	-19	49-42	#7	at Vanderbilt	-17	25-19	#10	at Vanderbilt	-14	49-22	#4	at Vanderbilt	-23	42-14	#1	Vanderbilt	-35	27-3
#12	at South Carolina	-4	22-30	#6	South Carolina	-13	17-16	#17	Vanderbilt	-14	49-22	#3	South Carolina - #24	-21	56-6	#1	at South Carolina	-17	24-14
#19	Florida St - #23	-3	34-7	#3	Western Carolina	NL	62-0	#14	at South Carolina	-7	51-31	#3	The Citadel	NL	70-19	#1	FIU	-45	62-3
				#4	at Florida St	-9	21-14	#14	Florida Atlantic	-34	59-20	#2	at Florida St - #23	-15	45-15	#1	Florida St	-24	37-10
				#4	† Arkansas - #8	-3	38-28	#12	Florida St	-14	45-12	#2	at Alabama - #1	-10	31-20	#1	† Alabama - #2	-5	13-30