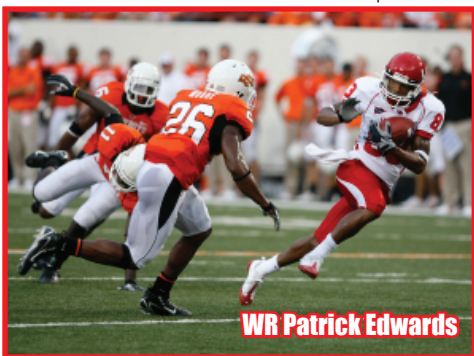


HOUSTON COUGARS

POSITION OUTLOOK FOR 2010

QUARTERBACKS - Kevin Kolb started as a true frosh and had a storied 4 year career topping David Klingler as the school's all-time leading passer. His backup in '06 was Blake Joseph (56 yds). In 2007 Joseph battled rFr Case Keenum. The two alternated starts and at times series over the first 8. Keenum, a mobile, cerebral QB took over and threw for 2,259 (69%, 14-10, 412 rush). In '08 Keenum had a streak of 13 straight 300 yd gms end in the bowl (1 shy FBS rec). He set an FBS record with 25 straight comp over a 2 game span (Tee Martin 24 at Tenn, '98). Keenum threw for 5,020 (67%) with a 44-11 ratio while avg 386 ypg!! Keenum had another record setting year in '09 (#8 Heisman vote). He set new career highs almost on a weekly basis and set a CUSA record with 56 comp's in the CUSA Title game (2 short NCAA rec). Keenum threw for 5,449 (71%) with a 43-9 ratio in the reg season but had miserable bowl with a season low 222 yds and a career high SIX int. Keenum is 4,167 yds behind Timmy Chang (Hawaii) to become the NCAA's all-time leading passer. Cotton Turner (PS#104) played in 5 (30-40-373, 3-0). Adding depth are Drew Hollingshead (6'3" 210 rFr, PS#73), Austin Elrod (6'1" 185 Jr), Crawford Jones (6'1" 193 So) and this year's true frosh. It will be tough for Keenum to top last year's numbers, but he is a legitimate Heisman contender.

RUNNING BACKS - The Cougars have had some top-notch RB's in recent years including Joffrey Reynolds who set a CUSA single season rush record (1,545 in '02). They also produced 1,000+ yard rushers in '03 and '05. In '06 Anthony "Quick Six" Alridge rushed for 959 with an amazing 10.1 ypc! In '07 Alridge had 1,597 (6.2) while adding 42 rec (10.2). In 2008 true frosh Bryce Beall, who is physical, strong and fast, took over. He had his first 100 yard game in wk 5 and finished with 1,247 (6.3) along with 496 rec yds (14.6). Andre Kohn (5'11" 207 Sr) who had 146 (5.2) in '07, added 257 (4.1) and Justin Johnson (6'1" 223 Jr, PS#96QB) had 97 (4.0). Last year Beall split carries with true frosh Charles Sims (PS#124). Sims finished with 698 (5.3) and 759 rec yds (10.8) while Beall had 670 (4.8) and 311 rec yds (9.7). Kohn missed '09 (inj) and Johnson had 84 (4.7). Chris Wilson (5'11" 214 So, PS#180) had 105 (4.4). Not in the PSL is Marc Woods (5'9" 197 Jr, PS#311). This year the unit returns intact and is one of CUSA's best RB corps.



WR Patrick Edwards

RECEIVERS - Houston had to replace their career leading receiver Vincent Marshall in '07 and in '08 had to replace their top 2 WR's including Donnie Avery (1,456, 16.0). Tyrone Carrier (sprinter trk tm, 4.29 spd) led in '08 with 1,026 (12.8) and Patrick Edwards had 634 (13.8) before a gruesome broken leg vs Marshall. Last year Iowa transfer James Cleveland (11 st, 464, 12.9 in '07) emerged to lead with 1,214 (11.7) despite

missing 2 (inj). Carrier added 1,029 (11.3) and Edwards, back from injury, had 1,021 (12.0). Chaz Rodriguez added 524 (12.5) while LJ Castile who had 531 (17.1) in '08, slipped to 217 (9.9). VHT AJ Dugat (PS#31) was cleared very late and had just 170 (12.1). Not in the PSL are Gino Collins (5'11" 187 So), Andrew Stewart (6'1" 205 Sr) and TE Wesley Scourten (6'6" 235 Sr, PS#169). This year they lose Rodriguez (10 st), Tim Monroe (2 st, 12 rec), Dugat (170, 12.1), Castile (1 st), and TE Fendi Onobun (2 rec, #6DC STL). With all three 1,000 yd rec's back, this is my #3 rated rec corps in the country.

OFFENSIVE LINE - In 2007's magazine I called this unit UH's most talented O-line in yrs and they opened holes for 224 ypg rush (4.9), their best since joining CUSA (34 sks, 7.8%). In '07 Briles' offense ran the ball 58% of the time vs 40% under HC Kevin Sumlin, so in '08 despite having 8 of the top 10 back, UH saw their rush drop to 161 ypg but their ypc rose to 5.2 and the sacks allowed dropped to 4.4% (27 sk). Last year they had to replace 2 multi-year starters (#2 DC) and two bkps (comb 6 sts). Starting LT Jacoby Ashworth was lost after just 4 (inj). The numbers dropped to 130 ypg rush (4.5) but with just 18 sks (2.4%). This year they lose 3rd Tm CUSA C Carl Barnett (3Y str), 2nd Tm CUSA RT Jarve Dean (14 st) and OT Matt Hart (7 gm). Isaiah Thompson moves in after starting 14 at NT LY.

DEFENSIVE LINE - The Cougars' rush D improved in each of Briles' first 5 years from allowing 209 ypg (5.1) in '03 to 140 (3.8) in '07 (see right). In '08 the unit ret'd 3 veteran senior str's but they switched to a 4-3 and lost a returning str after 2. DE Phillip Hunt became the CUSA DPOY (14 sks). Surprisingly UH allowed 175 ypg rush (4.2). Last year they had to replace Hunt and 2 other str's and I wrote that the DL was my biggest concern on the '09 squad. They were undersized and inexp'd. Not unexpectedly the Cougars allowed 227 ypg rush (highest S/94) and 5.1 ypc. This year they lose 2nd Tm CUSA DE Tyrell Graham (13 st, 69 tkl, 7 sk) and NT Thompson (14 st) moves to the OL. They add BYU transfer Matangi Tonga and keep your eyes on David Hunter who strength cch Larry Jackson called "freakishly strong" (450+ bench). They shift back to a 3-4 and are bigger and stronger but lost DE Zeke Riser (14 st in '09) to a torn ACL in the spring.

LINEBACKERS - Last year the Cougars had to replace their #3 tkl'r but ret'd #1, #4 and #7. Matt Nicholson (inj spring) ret'd to start the opener, but unfortunately was lost after 3 sts and Kris Johnston after 2 sts so true frosh Phillip Steward started 9. This year they lose 2nd Tm CUSA CJ Cavness (14 st, #2 tkl'r, 5 tfl) and Nicholas Thurston (19 tkl, 2 tfl). Marcus McGraw (#1 tkl'r '08) was #3 in FBS with 156 tkl's in '09 and Steward was the #4 tkl'r as a true. Nicholson (#7 tkl'r '08) is back and they add PS#104JC Sammy Brown. UH's D can only be stronger.

DEFENSIVE BACKS - The Cougars finished #55 in my pass D rankings in '07 and while they only had to replace 2 str's in '08, they surprisingly slipped to #94. Last year they were a less exp'd unit with just 1 starter back and then lost my top 2 proj'd FS over the summer. UH actually improved a little to #84 allowing a solid 15-11 ratio. This year they lose 2nd Tm CUSA CB Brandon Brinkley (12 st, 75 tkl, 4 int, 12 pbu), SS Carson Blackmon (11 st, 63 tkl, 4 pd) and S Tim Mercer (30 tkl). They return 2 str's and Jacky Candy (PS#59JC, proj str in '08) is also back. They should move up my PDR once again.

SPECIAL TEAMS - UH's best finish in my ST rankings under Briles was his first season at #50. In his final 4 years they were #115, #106, #92 and #90. In Sumlin's first year they had to replace their top KR (28.3) and PR but still moved up to #59 despite losing KR Patrick Edwards Wk 8. Last year I said they should be one of the top ST units in CUSA. The ST units were a major part of the team's success as they blk'd 6 kicks, had 5 KR

TD's and finished #29. They used 3 diff K's but rFr Matt Hogan hit 12-12 FG's (51 yd gm winner vs Tulsa), although he missed 2 xp's and a 3rd was blk'd vs EC. P Chase Turner had his net drop from 36.5 in '08 to 34.4 but Tyrone Carrier avg 29.0 on KR's with 4 TD's and was also the top PR (10.4). This year the only loss is Turner and this could be the top ST unit in CUSA.

COACHES - Art Briles did a great job here in his 5 years guiding the team to 4 bowls but left for Baylor after '07. Kevin Sumlin picked up right where Briles left off (18-9). Sumlin was Okla's ST's coach from '03-'05 before being elevated to co-OC ('06-'07). He was mentioned in several coaching searches in the offseason (Cincy, Kan, TTech). Co-OC Dana Holgerson left for Okla St but Jason Phillips (co-OC, WR cch here '07) remains. Sumlin promoted former TTech QB Kliff Kingsbury (quality control ass't L2Y) to co-OC/QB cch for '10. DC Brian Stewart begins his first year here after an NFL coaching career with stints at HOU, DAL (DC), SD and PHI.

PHIL'S FORECAST

Art Briles took over a team that won 3, 0 and 5 the previous 3 seasons and had just 7 starters returning. His brand-new multiple offense dumbfounded opponents and they avg 34.5 ppg (458 ypg) despite using a true frosh at QB in '03. UH went from zero wins to a bowl in 2 years. It was a magical season in '03 as UH achieved their 7-6 record. With a tougher schedule (#2 Okla, #4 Miami, #8 L'ville) they dropped to 3-8 in '04. In '05 I called for UH to return to a bowl and while they had 3 net close losses, they did just that (Ft Worth Bowl). They were my pick to win the CUSA West in '06 (media picked them #3) and they delivered as they won the CUSA Title going 10-4 with one of their losses on a last play Hail Mary. 2007 was Briles' first year without QB Kevin Kolb but surprisingly they avg 34.5 ppg tying '03 for his most productive offense. They had tough losses to EC (2 miss FG) and Bama (int in EZ) but still achieved a 8-5 record despite being -7 in TO's as they were +137.3 ypg in CUSA (2nd best). UH did have just 2 sts lost to injury. In '08 UH had just 11 ret str's. My main concern was how they would adjust to the new playbook. Kevin Sumlin's offense increased the ppg to 40.6 (best S/90). UH finished 8-5 again but probably had a more successful season (see Hardcore Fans). All they had to do was beat Rice in the "Bayou Bucket" game and they would have won the CUSA West Title, but they lost by 14. They got their first bowl win since 1980 when they knocked off AF 34-28. Last year they had the league's top returning QB and #2 RB from a team that was #1 in CUSA in ypg (+190.7). In Wk 2 the Cougars caught #5 Okla St the week after their titanic battle vs Georgia and pulled the upset on the road, 45-35. It was the first win over a Top 10 foe since 1988 and their 3rd straight win vs a ranked foe. The next week they got past TT at home 29-28 after TT was SOD at the UH1 in the 4Q (rose to #12). It was their turn for a letdown spot and they gave up 581 yds to UTEP (17 pt loss). They traveled to face Miss St and didn't take their first lead until 6:23 was left but won 31-24 and then dispatched Tulane and SMU. They led SM 40-22 in the 4Q and after they allowed a TD with :57 left to tie they went 77 yd for a TD with :21 left for the win. The next week at Tulsa, it appeared their hopes were gone when after a TD they missed on the 2 pt conv. UH rec'd the inside kick then got a 51 yd FG on the last play. They beat Memphis and Rice (comb 128-28) but in the CUSA Title game, they were -3 in TO and lost to EC. In a rematch of the Armed Forces Bowl vs AF, they were -5 in TO's and were outgained 563-331 and lost. Still, the Cougars did well to improve their record to 10-4 and once again were #1 in CUSA at +143.3 ypg. They do have 14 ret str's (3rd most in CUSA) but had 3 net close wins (pg 299). Houston should have an improved defense with 6 str's back and have one of the top offenses in the country. Not only are the Cougars my pick for the CUSA Title, but 2 of my 9 sets of power ratings call for an undefeated season and that would mean a BCS bowl.

OFFENSE 2010 PROJECTED STARTING LINEUP DEFENSE

QB 7 CASE KEENUM SR. 6-2 210 PS#317.20 st, 7279 (68%), 58-21 ratio '07/08. 14 st, 5671 (70%), 44-15, 2nd Tm AA LY. **12** Cotton Turner (6'1" 199 Jr) PS#104. JC 5 gm, 373 (75%) LY. **RB 5 CHARLES SIMS SO.** 6-0 195 PS#124. 9 st, 698 (5.3), **CUSA Fr of Yr** true. **25** Bryce Beall (5'11" 209 Jr) PS#299. 8 st, 1247 (6.3), CUSA Fr of Yr true. 5 st, 670 (4.8) LY. **WR 83 PATRICK EDWARDS JR.** 5-9 175 7 st (inj'd), 634 (13.8) rFr. 12 st, 1021 (12.0), **2nd Tm CUSA LY.** **88** EJ Smith (6'1" 187 Jr) PS#95. 3 st, 54 (9.0) rFr. 1 st, 126 (12.6) LY. **19 JAMES CLEVELAND SR.** 6-2 205 PS#50. 12 st, 1214 (11.7), **3rd Tm AA LY.** **9** Demetrius Woods (6'0" 190 So) PS#101. **44 Tyler Chambers** (6'4" 240 So) PS#62. 3 st TE true. **WR 35 TYRON CARRIER JR.** 5-8 163 PS#341.10 st, 1026 (12.8) rFr. 9 st, 1029 (11.3), **1st Tm CUSA KR LY.** **4** Ronnie Williams (5'11" 188 So) PS#202. 2 rec. Terrell Douglas (5'11" 207). **WR 84 Kierrie Johnson Sr.** 5-10 170 4 st, 499 (15.6) '08. 2 st, 237 (14.8) LY. **82** Chance Blackmon (6'1" 197 So) PS#92. **Colo trans.** Isaiah Sweeney (5'9" 170 So) PS#212. 6 gm true. **C 73 JORDAN SHOEMAKER SR.** 6-3 280 PS#214. 16 st LG LY. **77** Blake Sargent (6'3" 297 So) PS#292. 2 gm rFr. LS Brandon Hartson (6'3" 250 So) 14 gm rFr. Cory Johnson (6'0" 230 So). **RG 70 CHRIS THOMPSON JR.** 6-2 285 PS#319. 11 st, CUSA Fr Tm rFr. 14 st RG, **1st Tm CUSA LY.** **64** Ty Cloud (6'4" 315 rFr) PS#225. **65** Jonathan Coleman (5'11" 305 rFr). **LG 79 Isaiah Thompson Sr.** 6-4 300 PS#330. 24 st, 85 tkl, DL 3Y. OL spp. **63** Kevin Forsch (6'5" 301 rFr) PS#208. Chris Hill (6'4" 265 Fr) PS#297. **68** James Burden (6'2" 250 Fr). **RT 74 ROY WATTS SR.** 6-5 315 PS#15JC. 10 st LT, 14 gm LY. **69** Ralph Oragwu (6'3" 295 Fr) PS#243. Bryce Redman (6'2" 275 Fr) PS#247. **LT 76 Jacoby Ashworth So.** 6-4 290 PS#344. 4 st LT, 4 gm OFY (ankle inj) rFr. **60** Jaryd Anderson (6'4" 288 Sr) 7 gm '07/08. 4 st, 14 gm LY. Rowdy Harper (6'6" 270 Fr) PS#436. **K 46 MATT HOGAN SO.** 6-1 196 PS#76. 12-12 FG, L/51, 51 yd GWF Gms vs Tulsa, 1 TB/27 KO, **CUSA Fr Tm rFr.** **18** Jordan Mannisto (6'1" 205 Jr) PS#55. 8-13 FG, L/50, 2Y.

DE 95 DAVID HUNTER JR. 6-2 290 PS#319. 16 tkl true. 13 st, 57 tkl, 8.5 tfl in '09. **91** Raderman Scypion (6'4" 242 So) PS#178. 1 st, 12 tkl true. **99** Michael Ray (6'3" 269 Jr) 4 tkl 2Y. **NT 56 Tyrone Campbell So.** 6-1 287 PS#216. 1 st, 13 gm, 12 tkl. **92** DeAnthony Sims (6'3" 305 So) PS#194. 3 tkl true. **62** Doug Winfield (6'1" 267 Jr). **77** Charles Foster (5'11" 293 Jr). **DE 57 Matangi Tonga Sr.** 6-2 290 PS#44JC. 13 tkl true at BYU. 2Y Mission, JC. **93** Ameen Behbahani (6'2" 282 So). 1.5 sk tkl. **61** Ken Van Heule (6'3" 285 So) PS#342. 2 gm rFr. **WILL 8 Sammy Brown Jr.** 6-3 232 PS#104JC. IFC. **59** Kelvin King (6'2" 256 So) PS#230. 13 tkl true. **53** Miles Lacy (6'1" 200 So). No action LY. Marlon Smith (5'11" 217 Jr). **MO 55 MARCUS MCGRAW JR.** 6-0 210 13 st, 103 tkl true. 14 st, 156 tkl, **1st Tm CUSA LY.** **31** Kris Johnston (6'0" 218 So) PS#209. 2 st, 23 tkl rFr. Jeremy Smith (6'0" 205 Sr) 19 tkl LY. **LINE 30 MATT NICHOLSON SR.** 6-3 230 9 st, 109 tkl 3Y. 3 st, 13 tkl, MedRS LY. **47** John McIntyre (6'0" 227 Jr). 3 st 2Y. Jon Witten PS#201. Jeremy Uluocha (6'0" 225 Jr) JUCO. RS LY. **SAN 42 PHILLIP STEWARD SK.** 6-2 220 PS#308. 9 st, 89 tkl true. **38** George Bamco (5'11" 210 rFr) PS#519. Efreem Oliphant PS#160. **40** Brian Williams (6'1" 214 Jr) Tx St trans. RS here LY. **CB 32 JAMAL ROBINSON SR.** 5-11 185 PS#355. 14 st, 58 tkl, 5 int. 3rd Tm CUSA LY. **13** Thomas Bates (5'9" 175 rFr) PS#141. James Jones (6'0" 180 Fr). **49** Sean Haynes (5'9" 195 Jr). **CB 22 Loyce Means Sr.** 5-11 179 PS#443. 7 st, 36 tkl, 7 pbu, 5 int '07/08. 2 st, 11 tkl LY. **20** Devin Mays (5'11" 175 Sr) PS#177JC. 19 tkl, 1 int LY. **17** Omar Amin (5'11" 175 rFr). **SS 39 Roisean Haynes Jr.** 5-11 191 PS#443. 3 st, 64 tkl 2Y. **28** Jeffery Lewis (5'9" 182 So) 19 tkl true. Ricardo Bates (5'11" 175 Jr) PS#138. 7 tkl. 2Y. Marc Haynes (5'10" 190 Fr). **FS 41 NICK SAENZ JR.** 6-1 185 PS#229. 2 st, 6 tkl true. 14 st, 114 tkl LY. **21** Jacky Candy (5'11" 193 Sr) PS#59JC. BK Johnson (5'10" 180 Jr) 5 tkl 2Y. Chris Cermin (5'10" 188 So). **P 16 Jordan Mannisto Jr.** 6-1 205 PS#55. 8-13 FG, L/50, 38-40 PAT, 62 KO, 4 TB, 2Y. Richie Leone is PS#49. **46** Matt Hogan (6'1" 196 So) PS#76. 27 KO, 1 TB true. #2 P spp.

TOP NEWCOMERS FOR 2010

QB Terrance Broadway 6-1 197 PS#30
DL Matangi Tonga 6-2 290 PS#44JC
WR DeAndre Perry 6-4 210 PS#100
LB Sammy Brown 6-3 232 PS#104JC
WR Jordan Jolly 6-2 170 PS#110
QB Aaron Johnson 6-0 180 PS#79
DL Rodney Williams 6-0 248 PS#156
DB Alton Demby 5-10 175 PS#172
DB Kent Brooks 5-10 200 PS#187
WR Dominique Sanders 6-1 190 PS#151
RB Xavier Brown 6-0 197 PS#144
LB Austin Lunsford 6-3 295 PS#190
LB Efreem Oliphant 6-2 215 PS#160
WR Darian Lazard 6-0 275 PS#167
DB Bryce Redman 6-2 275 PS#202
DB Zachary McMillian 5-10 165 PS#253
QB David Piland 6-3 185 PS#150
LB Jon Witten 6-2 222 PS#201
LB Austin Wilson 6-2 210 PS#210
OL Chris Hill 6-4 265 PS#297
TE Kenneth Bibbins Jr. 6-4 215 PS#81
DL Jeremiah Farley 6-1 245 PS#294
K Richie Leone 6-0 190 PS#49
DB DJ Jones 6-0 185 PS#401
WR Langston Williams 5-9 160 PS#335
OL Rowdy Harper 6-6 270 PS#436
DL Eric Braswell 6-4 238 PS#456

HOUSTON COUGARS

Houston, Texas
Weather (713) 529-4444

KEVIN SUMLIN (Career 18-9)
3rd Year at Houston
Sumlin's Bowl Record: 1-1

Phil's Homefield Edge-4.25
2010 Schedule Difficulty-#95

Date	Opponent	TURF	LINE	Final Score	W
Sep. 4	Texas St	G			
Sep. 10	UTEP (Fri)	G			
Sep. 18	at UCLA	G			
Sep. 25	Tulane	G			
Oct. 2					
Oct. 9	Mississippi St	G			
Oct. 16	at Rice	A			
Oct. 23	at SMU	A			
Oct. 30	at Memphis	A			
Nov. 5	UCF (Fri)	G			
Nov. 13	Tulsa	G			
Nov. 20	at Southern Miss	A			
Nov. 27	at Texas Tech	A			
Dec. 4					

CAREER PASSING LEADERS
1. Kevin Kolb 12,964 '03-'06
2. Case Keenum 12,950 '07-Present
3. David Klingler 9,430 '88-'91

CAREER RUSHING LEADERS
1. Ketric Sanford 3,636 '96-'99
2. Chuck Weatherspoon 3,247 '87-'90
3. Robert Newhouse 2,961 '69-'71

CAREER RECEIVING LEADERS
1. Vincent Marshall 3,770 '03-'06
2. Elmo Wright 3,347 '68-'70
3. Donne Avery 3,286 '04-'07

UH is 0-3 vs TSU but the last meeting was in '48. The Bobcats were 7-4 LY incl a 56-21 loss to TCU. The Cougars have won 4 straight home openers beating the 2 FCS tms by 50 ppg.

UH has outgained UTEP in each of the last 4 meetings by 162 ypg. UH is 30-16-1 in conf openers. LY UH had leads of 10-0 & 17-10 but spent most of the 2H down by DD's.

The Cougars are 2-2 vs the Bruins but have dropped the last 2 ('97 & '98). In 1998 UH lost 42-24 despite a 475-421 yard edge (blk'd punt & 2 ints resulted in 21 UCLA pts).

UH has won 7 straight & over the L8 yrs have outgained the Green Wave in each by 219 ypg. UH only led 9-6 at HT LY w/a 211-179 yd edge before outscoring TU 20-0 in the 3Q.

BONUS: The 2 Fri night gms are the 1st S/79 at hm when UH won 14-10 vs TT at the Astrodome. BONUS: Coming into 2010, Houston has won 11 straight CUSA home games.

UH is 7-1 vs MSU, (lost in 1972). Last year Houston didn't lead until the 4Q, (tied at 7, 14 & 17) but used B2B 78/10pl & 76/2pl TD drives to pull away mid 4Q in the 31-24 win.

In the L8 gms of this rivalry UH has outgained Rice in each by 152 ypg. LY the Cougars scored 59 pts in the 1H which tied a school record. They led 59-0 at HT w/a 455-139 yd edge.

UH is 10-2-1 vs SMU & haven't lost in Dallas S/'92. LY QB Keenum had his lowest reg ssn output (221 ttd yds) but UH took advantage of 2 early SMU fumbles for a quick 14-0 lead.

Visitor is 6-2 & each tm has pulled a pair of upsets. UH has outgained UM in each of the L3 gms by 181 ypg. LY QB Keenum tossed 5 TD passes (just 2+ quarters) leading to a 42-14 HT led.

HT is 3-0 in this series. LY UH was up 17-10 at HT but UCF scored 27 of the gms next 30 pts with a 224-57 yd edge in that span. UH scored 2 late TD's for a misleading final.

UH has won 4 of the 5 CUSA meetings as the winner has outgained the loser in each by 166 ypg. The Cougars are 7-1 their L8 home finales (5 straight wins by 30 ppg).

Visitor has dropped 5 str incl the '06 CUSA Title gm but UH has outgained SM in each by 124 ypg. QB Case Keenum threw for a career high 559 yds (81%) LY vs SMiss.

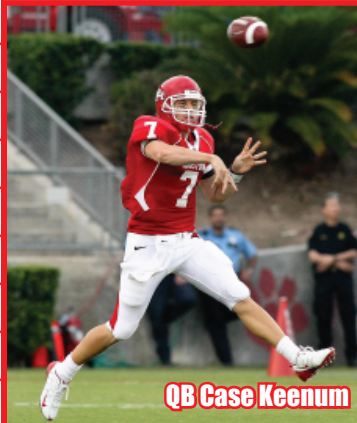
Old SWC rivals that played every yr from 1976-'95 but 1st trip to Lubbock since '92 for UH. Into 2010, UH is 3-15 in non-conf AG's vs current BCS opp's but beat Okl St & Miss St LY.

Sumlin's records AT HOUSTON

18-9 Straight Up	1-0 Vs Top 10
11-0 Home	3-0 Vs Top 25
6-7 Away	3-1 Vs BCS Teams
1-2 Neutral	4-1 Off A Bye
12-5 Vs Conference	5-3 Off A Loss

2009 RECORD: (10-4)
RETURNING STARTERS: OFFENSE: 8*
DEFENSE: 6
LETTERMEN: 46 (21,21,4)
Lost: 17 (9,6,2)

2009 AVERAGE ATTENDANCE: 25,242 (#81)
CUSA - WEST DIVISION



QB Case Keenum

STADIUM: ROBERTSON STADIUM (32,000) (#90)
PLAYING SURFACE: GRASS

	2000	2001	2002	2003	2004	2005	2006	2007	2008	2009	10Yr Total
STRAIGHT UP	3-8	0-11	5-7	7-6	3-3	6-6	10-4	8-5	8-5	10-4	60-64
Home	2-2	0-6	3-3	3-3	3-2	3-3	7-1	5-1	5-0	6-0	37-21
Away	1-6	0-5	2-4	3-2	0-5	3-2	3-2	3-3	2-4	4-3	21-36
Neutral	0-0	0-0	0-0	1-1	0-1	0-1	0-1	0-1	1-1	0-1	2-7
vs Conf	2-5	0-7	3-5	4-4	3-5	4-4	8-1	6-2	6-2	6-3	42-38
vs Non-Conf	1-3	0-4	2-2	3-2	0-3	2-2	2-3	2-3	2-3	4-1	18-26
ATS	2-9	4-7	5-7	7-5	1-3	6-5	8-5	4-8	5-7	8-5	52-66-1
Home Fav	0-2	0-1	1-3	2-1	1-2	2-2	5-1	1-4	2-1	4-0	18-17
Home Dog	1-1	2-3	1-1	1-2	1-1	0-1	1-0	0-0	1-0	0-0	8-9
Away Fav	0-0	0-1	0-0	2-0	0-1	1-1	1-2	2-1	0-4	1-4	7-13-1
Away Dog	1-5	2-2	3-3	0-2	1-4	3-0	1-1	1-2	1-1	2-0	15-20
Neutral	0-0	0-0	0-0	2-0	0-1	0-1	0-1	0-1	1-1	0-1	3-6
vs Conf	2-5	2-5	2-6	4-4	2-6	5-3	6-3	2-6	4-4	5-4	34-46
vs Non-Conf	0-4	2-2	3-1	3-1	1-2	1-2	2-2	2-2	1-3	3-1	18-20-1
Off SU Win	1-2	0-0	2-2	4-3	1-2	2-4	7-2	2-5	2-5	6-4	27-29
Off SU Loss	1-6	4-6	2-5	2-2	2-5	4-0	1-2	2-2	3-2	2-1	23-31-1

2009 STATISTICAL LEADERS											
RUSHING	ATT	GAIN	LOST	NET	TD	AVG	PLAYER	TKL	SKS	TFL	PBU
Charles Sims	132	718	20	698	9	5.3	Marcus McGraw	156	4	5	6
Bryce Beall	139	679	9	670	7	4.8	CJ Cayness	143	2.5	2.5	5
Case Keenum	60	287	129	158	4	2.6	Nick Saenz	114	0	1	6
Tyron Carrier	10	128	3	125	1	12.5	Phillip Steward	89	0	4	2
Chris Wilson	24	107	2	105	0	4.4	Brandon Brinkley	75	0	3	12
Justin Johnson	18	84	0	84	2	4.7	Tyrell Graham	69	7	4.5	4
PASSING	ATT	COMP	PCT	YDS	TD	INT	Carson Blackmon	63	0	2	3
Case Keenum	700	492	70.3	5671	44	15	Jamal Robinson	58	0	5	8
Cotton Turner	40	30	75.0	373	3	0	David Hunter	57	4	4.5	4
RECEIVING	REC	YDS	AVG	TD	LONG		Roisean Haynes	53	0	0.5	2
James Cleveland	104	1214	11.7	14	57		Isaiah Thompson	47	0	0	0
Tyron Carrier	91	1029	11.3	7	51		Zeke Riser	36	2.5	1	2
Patrick Edwards	85	1021	12.0	6	57		John McIntyre	33	0	2.5	0
Charles Sims	70	759	10.8	1	58		Tim Mercer	30	0	0	2
Chaz Rodriguez	42	524	12.5	3	37		Kris Johnston	23	0	0	1
Bryce Beall	32	311	9.7	3	27		Jeremy Smith	19	0	1	1
Kierrie Johnson	16	237	14.8	1	44		Devin Mays	19	0	0.5	1
LJ Castile	22	217	9.9	7	44		Nicholas Thurston	19	1	1	0
Tim Monroe	12	197	16.4	2	55		Jeffery Lewis	19	1	1	0
AJ Dugat	14	170	12.1	1	34		Kelvin King	13	0	1	0
PUNTING	NO	YDS	AVG	FC	NET	BLK	INT	PUNT RETURNS	NO	YDS	AVG
Chase Turner	43	1832	42.6	9	34.4	0	14	Tyron Carrier	7	73	10.4
KICKING	XP	1-29	30-39	40-49	50+	TOTAL	LONG	AJ Dugat	8	49	6.1
Matt Hogan	38-43	6-6	5-5	0-0	1-1	12-12	51	KICK RETURNS	NO	YDS	AVG
Jordan Mannisto	24-26	1-2	4-5	0-2	1-1	6-10	50	Tyron Carrier	34	986	29.0



YR	BOWL/TM RANK	LINE	OPPONENT	SCORE	LAST 5 BOWL GAMES
05	Fort Worth	+3	Kansas	13-42	
06	Liberty	+5	South Carolina	36-44	
07	Texas	+6	TCU	13-20	
08	Armed Forces	-3	Air Force	34-28	
09	Armed Forces	-4	Air Force	20-47	Houston's All-Time Bowl Record 8-11-1

OFFENSE - LAST 7 YEARS - DEFENSE

RET	OFF	TOTAL	OFF	YPC	OFF	PASS	YPP	SKS	TOTAL	RET	DEF	TOTAL	DEF	YPC	DEF	PASS	YPP	SKS
STS	PTS	OFF	RUSH	YPC	PASS	%	YPP	VS	TURN	STS	PTS	DEF	RUSH	YPC	PASS	%	YPP	BY
8*	42.2	563	130	4.5	434	70.3	13.3	18	+4	2009	4	30.1	451	227	5.1	225	62.6	15.0
5*	40.6	563	161	5.2	402	67.4	13.9	27	-6	2008	6	30.9	413	175	4.2	238	60.1	13.4
6	34.5	502	224	4.9	278	66.6	14.5	34	-7	2007	7	29.2	366	140	3.8	226	52.1	12.5
7*	33.0	446	168	4.8	278	67.4	13.5	33	+9	2006	9	23.5	351	143	4.2	208	57.4	15.0
8*	28.1	439	166	4.2	272	60.4	15.6	29	-4	2005	6	27.0	397	177	4.6	220	52.8	14.7
5	20.9	390	138	3.3	251	55.9	18.6	44	+6	2004	8	32.2	399	192	4.7	207	60.4	12.4
3	34.5	458	216	4.3	243	60.8	13.3	24	-6	2003	4	36.0	440	209	5.1	232	54.7	12.2

Get updated 2010 stats weekly on philsteele.com

OFFENSE - 2009 STATS BY GAME - DEFENSE

UH 2009		Total	Off	FD	Att	Yds	Avg	Co	Att	Yds	vs	Sks	Total	Def	FD	Att	Yds	Avg	Co	Att	Yds	vs	Sks	TD	Diff	Gm
22,043	Northwestern St	538	30	27	-91	3.4	32	-44	447	1	263	19	40	-157	3.9	22	-36	106	1	+2	275	75.4				
50,875	at Oklahoma St	512	32	36	-146	4.1	32	-46	366	0	434	27	41	-194	4.7	18	-31	240	2	+2	78	89.7				
32,114	Texas Tech	579	29	36	-144	4.0	38	-58	435	2	484	31	32	-163	5.1	30	-47	321	2	+1	95	89.4				
26,793	at UTEP	664	42	27	-128	4.7	51	-76	536	1	581	26	41	-305	7.4	19	-30	276	0	-2	83	62.7				
48,019	at Mississippi St	553	31	25	-119	4.8	39	-52	434	1	490	26	51	-330	6.5	15	-25	160	2	+2	63	85.3				
22,891	at Tulane	516	31	33	-145	4.4	33	-46	371	0	437	26	43	-187	4.3	22	-34	250	2	+1	79	68.2				
26,889	SMU	394	21	37	-161	4.4	25	-36	233	4	397	19	34	-197	5.8	18	-30	200	5	+3	-3	74.8				
20,125	Southern Miss	750	39	33	-191	5.8	44	-54	559	1	608	28	47	-248	5.3	21	-35	360	1	-2	142	78.1				
20,243	at Tulsa	697	34	40	-173	4.3	40	-60	524	2	534	27	42	-200	4.8	19	-26	334	4	+2	163	78.4				
36,776	at UCF	423	21	15	-46	3.1	33	-57	377	2	393	21	50	-152	3.0	21	-25	241	2	-1	30	71.2				
22,036	Memphis	689	33	24	-111	4.6	42	-55	578	1	344	22	45	-243	5.4	15	-28	101	1	+1	345	97.6				
28,243	Rice	684	30	31	-221	7.1	36	-47	463	1	377	18	45	-243	5.4	17	-33	134	1	+3	307	90.2				
33,048	at East Carolina	557	33	19	-30	1.6	56	-75	527	2	413	23	38	-151	4.0	21	-34	262	0	-3	144	80.2				
41,414	at Tulsa	331	18	20	-109	5.5	24	-41	222	0	563	27	72	-402	5.6	10	-14	161	1	-5	-232	54.5				
TOTALS		7887	424	403	-1815	4.5	525	-747	6072	18	6318	340	621	-3172	5.1	268	-428	3146	24	+4	1569	78.3				
AVERAGES		563	30.3	29	-130	4.5	70.3%	434	2.4%	451	24.3	44	-227	5.1	62.6%	225	5.6%	0.3	112	#34						
HOME		606	30.3	31	-153	4.9	73.8%	453	3.4%	412	22.8	41	-209	5.1	58.9%	204	5.3%	+8	194	84.2						
AWAY		532	30.3	27	-112	4.2	68.0%	420	1.8%	481	25.4	47	-240	5.1	66.2%	241	5.9%	-4	51	73.8						

UH Pre-Season	Opponent	Line	Score	Post-Season	UH Pre-Season	Opponent	Line	Score	Post-Season	UH Pre-Season	Opponent	Line	Score	Post-Season	UH Pre-Season	Opponent	Line	Score</
---------------	----------	------	-------	-------------	---------------	----------	------	-------	-------------	---------------	----------	------	-------	-------------	---------------	----------	------	---------