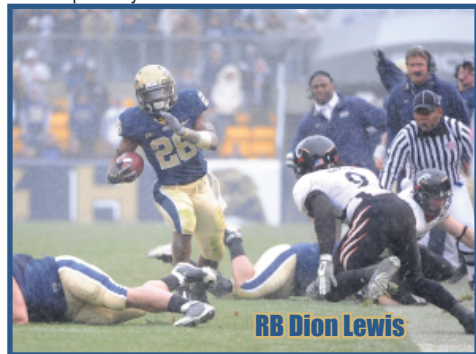


PITTSBURGH PANTHERS

POSITION OUTLOOK FOR 2010

QUARTERBACKS - In '07 Pitt had to replace Tyler Palko (PS#10) who finished 2nd all-time at Pitt in total off ahead of Dan Marino. In his final year, Palko threw for 2,871 (68.3%, 25-9). The ret QB's had just 10 career pass att's. PS#25 Bill Stull hit his first 7 passes but suffered a thumb inj in the 3Q of the opener and was OFY (177 pass, 70%). Kevan Smith started 3 and bkp Pat Bostick's (PS#9) first career pass was int'd. Then Smith was inj'd and Bostick started the ret throwing for 1,500 (61.5%) but with an 8-13 ratio. In 2008 all 3 ret'd and their goal was to RS Bostick. Stull threw for 2,356 (57%) but with a 9-10 ratio. He was having a solid year but struggled after a concussion vs Rutgers. Surprisingly they pulled the RS off Bostick for some late action vs Navy (gm 6). Two weeks later when Stull was inj'd, Bostick guided the win over ND! Smith had just 3 att's. Last year Stull and Bostick ret'd. In mid-Aug the QB job was a 3-way battle including rFr Tino Sunseri (PS#29). Stull was booed on the '09 opening drive after a poor inc pass but had a much better year than Pitt fans or even HC Wannstedt could have expected. Stull threw for 2,633 (65%) with a 21-8 ratio and departs. Bostick RS. Sunseri was the clear-cut starter out of spring '10 but Bostick did have a good year with the scout tm. Sunseri has a stronger arm but probably will not match Stull's '09 numbers.



RB Dion Lewis

RUNNING BACKS - In 2004 Pitt avg just 98 ypg rushing (2.6). In 2007 LeSean McCoy (PS#8, 210 lbs) broke Big East Fr rushing records with 1,328 (4.8) and had 33 rec (7.4). In '08 McCoy rushed for 1,488 (4.8) with 21 TD's. Last year the top 3 departed so the returning RB's had a combined 49 yards on 17 att's. Wannstedt again turned it over to freshmen. True frosh Dion Lewis, who grew up 45 minutes from the Rutgers campus but was not recruited by RU, had a phenomenal season and was 2nd Tm AA. He rushed for 1,799 (5.5) eclipsing McCoy's BE Frosh record. True frosh Ray Graham (PS#31) rushed for just 349 but 5.7 ypc and Wannstedt called him the star of the spring. FB Henry Hynoski (PS#31) is a solid blocker who rushed for 107 (4.5) with 109 (7.3) rec and will contribute more on offense. Not listed below are Jason Douglas (5'7" 170 rFr, PS#233) and FB's Joe Capp (5'10" 240 Sr) and Kevin Adams (6'1" 205 rFr, PS#238). This is my #4 RB corps in the NCAA.

RECEIVERS - Underformer HC Walt Harris, Pitt was gaining the reputation of "WR U" as they had a WR lead the BE in receiving 7 times in 8 yrs (1997-2004). In '08 Derek Kinder led Pitt with just 422 (11.7) and had to be replaced in '09 (#7DC CHI) as did their #3 rec. The leading returnee was 6'5" Jon Baldwin (PS#15, 4.37 spd). Baldwin had little impact early as a true frosh but finished #2 with 404 and an impressive 22.4. As expected, Baldwin had a much bigger year in '09 (#3 BE) with 1,111 (19.5) and 8 TD's. Dorin Dickerson (PS#8) had played RB, WR and LB before moving

to TE. Dickerson earned 1st Tm AA with 529 (10.8) and 10 TD's. Solid blocking TE Nate Byham (PS#2) had 108 (10.8). Oderick Turner (6'3", PS#97) was #3 with 227 (10.8) and 6'5" rFr Mike Shanahan was #4 (211, 14.1). This year they lose Byham (12 st, #6DC SF), Dickerson (8 st, #7DC HOU), Turner (10 st), and Cedric McGee (1 st, 12 rec). They bring in Virginia transfer TE Andrew Devlin, 2 VHT frosh and Greg Cross (PS#17JC) moves from QB. Adding depth at TE is Justin Virbitsky (6'4" 265 So, PS#204DL). This group is more experienced and even with the loss of a 1st Tm AA TE could be just as good.

OFFENSIVE LINE - In '08 they had to replace 3 starters but brought in veteran OL Coach Tony Wise (18 yr NFL) and JUCO C Robb Houser. The numbers were similar to '07 (139 ypg rush, 3.7) with 32 sks (8.4%) despite losing Houser after 7 sts. Last year they had to replace 1 starter and 2 backups (comb 7 st). Prior to '07 Pitt had 4 players who could bench 400+ but in '09 that number was up to 15. With 4 starters back, the line made great improvement with 180 ypg rush (4.9) with just 15 sks (4.4%). This year they lose C Houser (13 st, 2Y st'r), 1st Tm BE RG John Malecki (13 st, 2Y st'r) and LG Joe Thomas (12 st, 4Y st'r). While both tackles are 1st Tm BE caliber, I do have some questions about the interior line.

DEFENSIVE LINE - In Wannstedt's first two years, they had inexp and injury plagued D-lines allowing 4.3 and 4.6 ypc. In '07 they had 4 starters back and allowed 130 ypg (3.2) and in '08 with 2 starters back allowed 124 ypg (3.6) while the D had 33 sks. Last year they had 4 back who had been full-time starters (lost 1 st'r) and I called it the best D-line in Wannstedt's 5 yrs. They did not disappoint allowing 106 ypg rush (3.3) with Pitt having an FBS high 47 sks (36 by DL). This year they lose 2nd Tm BE NT Gus Mustakas (38 tkl, 4.5 sk, 4.5 tfl), DT Mick Williams (12 st, 42 tkl, 5 sk, 12 tfl) and DT Craig Bokor (4 tkl). Nate Nix moves in from LB. DE's Romeus and Sheard return (comb 30 car sk) and while not as experienced this should be another top-notch group.

LINEBACKERS - Pitt actually has two FWAA AA LB's in the last 4 yrs in HB Blades ('06) and Scott McKillop ('08). Last year they had to replace 2 starters who were their #1 tkl'r (#5DC) and #2 tkl'r. They had 1 starter back and ret'd '07 starter Adam Gunn (miss '08, inj). True frosh Dan Mason earned BE DPW (Navy) in his first start (11 tkl/2 sk) and Wannstedt said he was one of the few LB's with the speed and ability to make plays in space. This year they lose 1st Tm BE MLB Adam Gunn (11 st, 77 tkl, 5 sk), Steve Dell (14 tkl) and Shane Murray (1 tkl). They return 2 starters and Mason will try to continue Pitt's 5 year run of MLB's earninging 1st Tm BE honors (Blades, McKillop and Gunn). This should again be one of the top LB units in the BE.

DEFENSIVE BACKS - Pitt has ranked in the top 3 of the NCAA in ypg pass D twice in Wannstedt's 5 years. In '08 Pitt was #42 in my PDR and last year had 7 (4 VHT) of the top 8 back. Wannstedt said that CB Aaron Berry was faster than any player he faced and he was 1st Tm BE (1 int, 10 pbu). It is surprising that Pitt dropped to #43 but they did snag 15 int. This year they lose Berry (11 st, 31 tkl), CB Jovani Chappell (13 st, #4 tkl'r, 0 int, 10 pbu) and Elijah Fields (6 st, 34 tkl, 3 int). SS Dom DeCicco (#2 tkl'r) was 2nd Tm BE and Andrew Taglianetti started 2 at FS but was lost (inj) and both are back. They add PS#73JC Saheed Imoru. Not listed in the PSL are Dan Cafaro (5'10" 170 Sr) and Pat Costello (5'11" 175 So). Despite the loss of their star Berry, this unit could move up my PDR.

SPECIAL TEAMS - In 2006 P Adam Graessle had an outstanding net of 37.5 and Pitt moved up to #13 in my ST rankings. In '07 they had to replace Graessle and dropped to #55. In '08 K Conor Lee completed his career 113-113 on xp's

and set a school record with 20 FG's (long 44). Dave Brytus improved his net to 37.1 but the return game was avg. Pitt moved up to #29 but had to replace Lee and Brytus in '09. RFr Kevin Harper (PS#17) hit a 61 yd FG in HS (also 80% TB on KO) but surprisingly Dan Hutchins handled both FG (23-29, long 45) and P (34.5 net). Harper had just 3 TB's on 10 KO's. Luke Briggs had 3 TB's (66 KO) in '08 and had 12 TB's on 74 KO's in '09. Pitt had just 169 yds (7.7) on PR's but Cameron Saddler did well as a KR (25.3) despite missing 2. They also lost Andrew Taglianetti after 2 gm (3 blk's '08). Overall the unit slumped to #66. This year they only lose Briggs and I expect a bigger impact out of Harper.

COACHES - Dave Wannstedt was Jimmy Johnson's asst at Okla St and Miami, FL and the DC and asst HC during the Dallas Cowboys' Super Bowl years. He was the Chicago Bears HC from '93-'98 and HC of the Dolphins (2000-'04). His 41-23 rec season record from '00 to '03 was 5th best in that span. Wannstedt was captain of Pitt's '73 Fiesta Bowl team. Last year Wannstedt brought in a new OC in Pitt native Frank Cignetti (Cal's OC in '08). Cignetti was the 49ers QB cch in '07, the OC at NCar in '06 and the OC at Fresno ('02-'05). DC Phil Bennett was previously SMU's HC ('02-'07) and ran top-notch units as a DC at Kansas St and TCU.

PILL'S FORECAST

In Walt Harris' final five years, Pitt went to bowls every year including to the Fiesta Bowl as the Big East Champs in '04. Nine of the 13 losses from 2002-'04 were by 8 or less. In their Fiesta Bowl season Harris was named Big East COY as Pitt had been the least exp'd BE team (9 ret st'r's). Harris took the Stanford job and Pitt excited the alumni by bringing in Dave Wannstedt. Unfortunately, Wannstedt went 5-6 his 1st year. In '06 they had 11 ret st'r's and they opened 6-1 (best start S'/82) but finished with 5 straight losses. That '06 squad had a veteran QB and avg 31.8 ppg, their best since 1981. In 2007 they had no exp at QB then lost starting QB Stull to injury. Wannstedt appeared gone with a 4-7 start and #2 WV on deck in the season finale. Pitt was a 29 point dog but after they pulled the upset he was retained. Pitt was +24 ypg vs BE in '07 and in 2008 lost just 13 lettermen (fewest BE) and had 13 ret st'r's. Pitt made my Most Improved List and as you would expect, they had their first winning season under Wannstedt. Pitt was #25 AP but was stunned by BG in the opener. They won 4 of their last 5 including a 4OT victory at ND and went 9-3. They lost to Oregon St 3-0 in the lowest scoring bowl since 1959. Pitt finished in a 3-way tie for 2nd in the Big East at 5-2 (+25 ypg). Last year Pitt had 15 ret st'r's and I noted that six of my sets of power ratings called for them to have a double digit win season. Pitt very narrowly missed out on the Big East Title. They opened 3-0 and led NCSU 31-17 in the 3Q but lost by 7. They trailed L'ville 10-7 at the half but dominated the 2H in a 35-10 win then had a 489-303 yd edge vs Conn but only won by 3. They had a 376-286 yd edge at Rutgers and earned Wannstedt his first win over Schiano in his 5 years. They blasted USF and Syr and then led ND 20-3 hanging on for a 27-22 win. The Backyard Brawl actually meant nothing to Pitt as win or lose, the BE Title and a BCS bowl rode on the Cincy game. Pitt was ranked in the Top 10 for the first time since 1982 (Dan Marino). WV got a late FG to pull out a 19-16 win. The next week Pitt appeared on their way to the Orange Bowl as they led Cincy 31-10 before allowing a KR TD that switched the momentum late in the 1H. They still led 44-38 but gave up a TD with :33 left and lost by 1. They took on NCar in Charlotte and despite NC having the crowd edge, Pitt got their 10th win of the season for the first time since 1981. Pitt was +114.1 ypg in BE play which was 2nd best. However, they do have just 11 ret st'r's (last in BE), had only 7 sts lost to injury last year and were +10 in TO's. Despite those factors and the fact that they have 4 Big East AG's and just 3 at home, the Panthers may have the most talented team in the BE and probably should have won the crown last year.

OFFENSE 2010 PROJECTED STARTING LINEUP

QB 12 Tino Sunseri So. 6-2 210 PS#29.5gm, 114 (59%) 2-0 ratio rFr. **19 Pat Bostick** (6'3" 225 Jr) PS#9. 9 st, 1770 (60%), 9-17 2Y. RS LY. 4 Andrew Janocko (6'2" 200 Jr) PS#209.
RB 28 DION LEWIS SO. 5-8 195 PS#10. 12 gm, 1799 (5.5), 2nd Tm AA true. **34 Ray Graham** (5'9" 185 So) PS#31. 349 (5.7) true. **29 Chris Burns** (5'11" 195 So) PS#56. 29 (2.6) rFr.
WR 87 MIKE SHANAHAN SO. 6-5 220 PS#81. 211 (14.1) rFr. **5 Cameron Saddler** (5'7" 170 So) PS#50. 25 KR (25.3) rFr. **EB 27 Henry Hynoski** (6'2" 260 Jr) PS#31. 110 (4.4) 2Y.
WR 82 JON BALDWIN JR. 6-5 225 PS#15. 404 (22.4) true. 12 st, 1111 (19.5), 1st Tm BE LY. **3 Aaron Smith** (6'0" 180 Jr) PS#26. 16 gm 2Y. **83 Caleb Wilson** (5'10" 180 So). 1 gm rFr.
WR 14 Greg Cross Sr. 6-2 215 PS#17JC. 12 gm QB '08. RS to learn WR pos LY. **Todd Thomas** PS#22DB. **84 Ed Tinker** (6'2" 200 Jr) PS#89. **86 Devin Street** (6'3" 180 rFr) PS#164.
TE 85 Mike Cruz So. 6-5 270 PS#96. 1st rFr. **47 Andrew Devlin** (6'6" 255 Jr) PS#20. 3 rec rFr UVA. Trans LY. **81 Brock DeCicco** (6'5" 235 rFr) PS#12. **Jon Tisak** (6'2" 215 rFr) PS#269.
C 61 Alex Karabin Sr. 6-1 290 2 gm rFr. 13 gm '08. 13 gm LY. **72 Jack Lippert** (6'4" 250 rFr) PS#49. **LS 71 John Fieger** (6'6" 290 Jr) PS#202. No action rFr. 13 gm LY.
RG 75 Ryan Turnley So. 6-6 305 PS#130. 3 gm rFr. **80 Greg Gaskins** (6'4" 285 Jr) PS#165. 13 gm 2Y. **Shane Johnson** (6'5" 295 Fr) PS#82. **Ryan Schlieper** (6'5" 280 Jr) PS#134.
LG 54 Chris Jacobson Jr. 6-3 290 PS#14. 2 gm rFr. 1 st LG, 13 gm mostly on spec tms LY. **62 Fernando Diaz** (6'2" 275 rFr) PS#167. **58 Kevin Barthelmy** (6'3" 250 rFr).
RT 52 LUCAS NIX JR. 6-6 300 PS#10. 6 gm true. 13 st RT LY. **78 Cory King** (6'6" 315 rFr) PS#128. **Matt Rotherham** is PS#49. **59 Keith Coleman** (6'4" 300 So). From DL.
LT 77 JASON PINKSTON SR. 6-4 305 PS#24. 7 gm true. MedRS '07. 12 st RT LY. 13 st, 1st Tm BE LY. **68 Jordan Gibbs** (6'7" 295 Jr) 13 gm 2Y. **70 Juanter Hollins** (6'5" 270 rFr) PS#157.
K 30 DAN HUTCHINS SR. 5-11 190 PS#102. 23-29, L/45, 2nd Tm BE LY. **39 Kevin Harper** (5'10" 170 So) PS#17. 0-1 (51 yd att) rFr. **20 Garrett Tonio** (5'10" 185 Jr) PS#79.

DE 97 JABAAL SHEARD SR. 6-4 260 PS#95. 13 st, 48 tkl, 10.5 tfl 2Y. 13 st, 42 tkl, 10.5 tfl LY. **46 Shayne Hale** (6'4" 250 So) PS#8. 3 tkl rFr. **51 Bernardo Nunez** (6'2" 235 rFr) PS#113.
LT 94 Myles Caragein Jr. 6-2 275 PS#69. 9 tkl rFr. 1 st, 35 tkl, 7.5 tfl LY. **50 Tyrone Ezell** (6'4" 270 rFr) PS#65. **45 Tyler Tkach** (6'3" 280 Sr) PS#149. 19 gm, 11 tkl, '07/08. 2 gm LY.
DT NA TJ Clemmings Fr. 6-6 280 PS#22. **98 Chas Alecxih** (6'5" 275 Jr). 1 tkl rFr. 12 tkl, 4 sk LY. **96 Justin Hargrove** (6'4" 265 Jr) PS#52. 1 tkl, 8 gm, 2Y. Aaron Donald is PS#62.
DE 91 GREG ROMEUS SR. 6-6 270 92 tkl, 27 tfl, 2Y. 13 st, 43 tkl, 8 sk, 1st Tm BE LY.
35 Brandon Lindsey (6'2" 240 Jr) PS#56. 18 tkl, 4 sk LY. **44 Nate Nix** (6'4" 235 Sr) PS#55. 38 tkl 3Y.
38 GREG WILLIAMS JR. 6-3 240 PS#92. 12 st, 47 tkl, 6.5 tfl rFr. 9 st, 33 tkl, 4 tfl LY.
32 Tristan Roberts (6'1" 235 Jr) PS#169. 7 tkl 2Y. **Eric Williams** PS#112. **Jon Taglianetti** (6'1" 225 So).
MLB 40 Dan Mason So. 6-0 225 PS#26. 3 st, 26 tkl, 2 sk true. **58 Shane Gordon** (6'1" 225 rFr) PS#99. **53 Joe Trebitz** (6'3" 215 So) PS#368. **Christopher Mike** (6'1" 230 So).
SLB 55 MAX GRUDER JR. 6-2 230 PS#40. 5 tkl rFr. 13 st, 91 tkl (#1 on tml), 4.5 tfl LY.
63 Manny Williams (6'1" 225 So) PS#102. 8 tkl rFr. **30 Carl Fleming** (6'1" 210 rFr) PS#221.
CB 26 Ricky Gary Sr. 5-9 175 PS#54. 8 st, 16 tkl '07/08. 2 st, 16 tkl LY. **2 Saheed Imoru** (6'1" 190 Jr) PS#73JC. **IFS. 23 Marco Pecora** (5'10" 205 So) PS#292. 2 tkl, 6 gm rFr.
CB 22 Antwan Reed Jr. 5-10 190 PS#84. 22 gm, 20 tkl, 2Y. **21 Buddy Jackson** (6'1" 180 Jr). 14 gm, 8 tkl, 2Y. **10 Audre Wright** (5'11" 180 Jr) PS#209WR. 2 rec LY. Move in spring.
SS 31 DOM DECICCO SR. 6-3 230 PS#71. 11 st, 62 tkl, 4 int '07/08 13 st, 88 tkl, 3 int.
2nd Tm BE LY. 16 Kolby Gray (6'2" 185 rFr) PS#106. **27 Todd Gilchrist** (6'1" 200 Jr). Walk-on.
FS 18 JARRED HOLLEY SO. 5-10 175 PS#31. 8 st, 48 tkl, 3 int rFr. **41 Andrew Taglianetti** (5'11" 190 So) PS#236. 13 gm, 9 tkl true. 2 st (inj) 4 tkl LY. **25 Jason Hendricks** (6'0" 190 rFr).
P 30 DAN HUTCHINS SR. 5-11 190 2 punts (41.0) '08. 44 (41.1), 34.5 net LY.
92 Matt Yokic (6'2" 210 rFr). **26 Aaron Hassett** (5'11" 180 So). No action as rFr.

PhilSteele.com Football 24/7/365

TOP NEWCOMERS FOR 2010

DL TJ Clemmings 6-6 280 PS#22
WR Todd Thomas 6-2 205 PS#22DB
QB Anthony Gonzalez 6-3 215 PS#28
OL Matt Rotherham 6-6 300 PS#49
DL Bryan Murphy 6-3 245 PS#54
DL Aaron Donald 6-4 240 PS#62
WR Andrew Givens 5-10 185 PS#46
WR Drew Carswell 5-10 200 PS#58
WR Salath Williams 6-3 200 PS#63
RB TJ Peeler 6-1 210 PS#63
DB Brandon Hill 6-1 190 PS#80
DB Jeff Knox 6-2 205 PS#82
OL Shane Johnson 6-5 295 PS#82
DB Derrick Burns 5-11 205 PS#96
DB Saheed Imoru 5-10 190 PS#73JC
WR Kevin Weatherspoon 5-10 170 PS#90
OL Brandon Sacco 6-3 255 PS#124
TE Dan Schneider 6-4 240 PS#36
DB K'Wuan Williams 5-10 175 PS#113
TE Brendan Carozzoni 6-4 220 PS#42
DL Khaynin Mosley-Smith 6-0 290 PS#148
LB Eric Williams 6-3 215 PS#112
OL Arthur Doakes 6-6 325 PS#147
QB Mark Myers 6-4 225 PS#125

Phil's Homefield Edge-4.0 2010 Schedule Difficulty-#28		T U R F	L I N E	Final Score		W L
Date	Opponent			PITT	Opp	
Sep. 2	at Utah (Thur)	A				
Sep. 11	New Hampshire	G				
Sep. 18						
Sep. 23	Miami, FL (Thur)	G				
Oct. 2	FIU	G				
Oct. 9	at Notre Dame	G				
Oct. 16	at Syracuse	A				
Oct. 23	Rutgers	G				
Oct. 30	Louisville	G				
Nov. 6						
Nov. 11	at Connecticut (Thur)	G				
Nov. 20	at USF	G				
Nov. 26	West Virginia (Fri)	G				
Dec. 4	at Cincinnati	A				

CAREER PASSING LEADERS

1. Alex Van Pelt 11,267 '89-'92
2. Dan Marino 8,597 '79-'82
3. Tyler Palko 8,343 '02-'06

CAREER BUILDING LEADERS

1. Tony Dorsett 6,526 '73-'77
2. Curvin Richards 3,192 '88
3. Craig Heyward 3,086 '84, '88

CAREER RECEIVING LEADER

1. Antonio Bryant 3,061 '99-'00
2. Dietrich Jells 3,003 '91-'97
3. Latef Grim 2,680 '98-'00

Only meeting was the '04 Fiesta Bowl as #19 Pitt lost 35-7 (outgained 467-268) to a #5 Utah TM (1st non-BCS conf school to play in a BCS bowl). Pitt is 5-11 in road openers but has won L2Y.

First meeting, Pitt has won 11 of 13 home openers (avg win by 23 ppg). Wildcats were 10-3 LY incl a win at Ball ST making it to the 2nd round of the FCS playoffs (lost to eventual champ Villanova).

BONUS: Pitt is 7-0 vs current CAA teams and 49-17-5 vs current FCS teams.

Pitt is 1-14 S/⁸⁴ vs Miami w/the L/meeting in '03 (last year Miami was in BE). Panthers have been outgained in 5 of the L/6 gms vs the Hurricanes by an avg of 185 ypg.

First meeting. Pitt has only played one gm vs a current SBC member, beating Louisiana 45-13 in '97. Coming into 2010, Pitt is 13-5 hosting non-conf tms the L6Y (5 straight wins).

LY Pitt almost blew a 18 pt 4Q lead which would have been 5 straight upsets in this series. Pitt is 4-12 since 1988 vs ND but has won 3 of L/4 incl the L/2 trips to South Bend.

Pitt has won 5 str by 13 ppg & has outgained SU in 7 of 8 (+141 ypg). LY Pitt trailed 3-0 after all'g 71 yds on SU's opening drive but scored the next 37 all'g just 214 yds on the last 61 plays (3.5).

LY Pitt snapped its longest losing streak (4 gms) in this series history & holds a 20-7 advantage. Pitt quickly erased a early 7-0 BU lead (off TO) to score 24 of the games next 27 pts.

The winner in the 5 Big East gms has outgained the losing tm by an avg of 103 ypg. Last year Pitt trailed 10-7 at HT but outscored UL 28-0 in 2H holding them to just 96 yds.

Last year Pitt was down 21-6 late 3Q before pulling the largest comeback under Wannstedt capped by a 18 yd FG as time expired. Into 2010, Pitt has won 6 of their L/8 BE AG's.

Pitt has outgained USF by an avg of 202 ypg the L2Y pulling a big upset their L/trip to FL. LY Pitt led 31-7 at HT w/a 309-105 vd edge. Just the 8th overall meeting (Pitt leads 4-3).

The L/3 "Backyard Brawls" have been decided by 4 pts or less with the L/2 in the final minute (LY gm's final play). LY Pitt had the "BE Championship" on deck already locked up.

RB Dion Lewis had career/ssn highs in attempts (47), yds (194) & TD's (3) LY vs UC but Pitt couldn't hold on to a 31-10 late 2Q lead costing them a trip to the Sugar Bowl.

STADIUM: HEINZ FIELD (65,050) (#35)
PLAYING SURFACE: GRASS

	2000	2001	2002	2003	2004	2005	2006	2007	2008	2009	10yr Total
STRAIGHT UP	7-5	7-5	9-4	8-5	8-4	5-6	6-6	5-7	9-4	10-3	74-49
Home	5-1	3-3	5-2	4-2	5-1	1-1	3-4	4-3	4-2	6-1	44-20
Away	2-3	3-2	3-2	4-2	3-2	0-5	3-2	1-4	5-1	3-2	27-25
Neutral	0-1	1-0	1-0	0-1	0-1	0-0	0-0	0-0	0-1	1-0	3-4
vs Conf	4-3	4-3	5-2	5-2	4-2	4-3	2-5	3-4	5-2	5-2	41-28
vs Non-Conf	3-2	3-2	4-2	3-3	4-2	1-3	4-1	2-3	4-2	5-1	33-21
ATS	5-7	7-4	6-7	5-8	6-5	5-5	5-6	6-5	7-6	8-4	60-57
Home Fav	2-3	1-1	1-5	2-2	2-0	4-1	2-2	1-3	1-3	3-2	19-22
Home Dog	1-0	2-1	1-0	1-1	2-1	0-0	0-2	1-1	1-0	1-0	10-6
Away Fav	1-1	2-0	0-1	2-4	1-1	0-2	3-2	0-0	1-1	3-0	13-12
Away Dog	1-2	1-2	3-1	0-0	1-2	1-2	0-0	4-1	3-1	0-0	14-11
Neutral	0-1	1-0	1-0	0-1	0-1	0-0	0-0	0-0	0-1	1-0	3-4
vs Conf	3-4	5-2	3-4	3-4	3-3	4-3	2-5	4-3	4-3	5-2	36-33
vs Non-Conf	2-3	2-2	3-3	2-4	3-2	1-2	3-1	2-2	3-3	3-2	24-24
Off SU Win	4-3	5-1	5-3	3-5	4-4	2-3	4-2	3-0	5-4	5-4	40-29
Off SU Loss	1-3	2-3	1-3	1-3	1-1	3-1	0-4	2-5	2-1	3-0	16-24

2009 STATISTICAL LEADERS

RUSHING	ATT	GAIN	LOST	NET	TD	AVG	PLAYER	TKL	SKS	TFL	PBU	INT	
Dion Lewis	325	1862	63	1799	17	5.5	Max Gruder	91	0.5	4	4	0	
Ray Graham	61	361	12	349	4	5.7	Dom DeCicco	88	0	1	3	3	
Henry Hynoski	24	109	2	107	1	4.5	Adam Gunn	77	5	2.5	2	0	
Jon Baldwin	1	61	0	61	0	61.0	Jovani Chappel	54	0	1.5	10	0	
Cedric McGee	2	56	0	56	1	28.0	Jarred Holey	48	0	0	3	3	
Chris Burns	11	29	0	29	0	2.6	Greg Romeus	43	8	3.5	5	1	
Bill Stull	32	64	115	-51	2	-1.6	Jack Williams	42	5	1.2	1	0	
PASSING	ATT	COMP	PCT	YDS	TD	INT	Mickal Sheard	42	5	5.5	3	0	
Bill Stull	321	209	65.1	2633	21	8	Gus Mustakas	38	4.5	4.5	1	0	
Tino Sunseri	17	10	58.8	114	2	0	Myles Caragein	35	5	2.5	1	0	
RECEIVING	REC	YDS	AVG	TD	LONG		Elijah Fields	34	0	3	2	3	
Jon Baldwin	57	1111	19.5	8	79		Greg Williams	33	0.5	0.5	0	1	
Dorin Dickerson	49	529	10.8	10	53		Aaron Berry	31	0	1.5	10	0	
Oderick Turner	21	227	10.8	1	26		Dan Mason	26	2	1.5	0	1	
Mike Shanahan	15	211	14.1	0	29		Nate Nix	20	1	1	0	0	
Dion Lewis	25	189	7.6	1	31		Brandon Lindsey	18	4	1.5	1	0	
Cedric McGee	12	139	11.6	0	31		Ricky Gary	16	0	0	2	1	
Henry Hynoski	15	109	7.3	0	21		Steve Dell	14	1	0	1	0	
Nate Byham	10	108	10.8	0	24		Antwan Reed	13	0	0	1	1	
Ray Graham	8	46	5.8	0	14		Chas Alecxi	12	4	1	0	0	
Cameron Saddler	3	41	13.7	1	24		PUNT RETURNS	NO	YDS	AVG	TD	INT	
PUNTING	NO	YDS	AVG	FC	NET	BLK	INT	Aaron Smith	17	109	6.4	0	0
Dan Hutchins	44	1810	41.1	6	34.5	1	16	KICK RETURNS	NO	YDS	AVG	TD	INT
KICKING	XP	1-29	30-49	40-49	50+	23-29	40-49	Cameron Saddler	25	633	25.3	0	0
Dan Hutchins	46-48	6-6	13-14	4-8	0-1	TOTAL	LONG	Ray Graham	15	337	22.5	0	0

PIT Rank	Pre #23 Opponent	Line	Score	Post -
#23	Notre Dame	-3	21-42	
-	at Ohio	-14	10-16	OT
-	at Nebraska	+9	6-7	
-	Youngstown St	NL	41-0	
-	at Rutgers	-1'	29-37	
-	Cincinnati	-12'	38-20	
-	USF	-1	31-17	
-	Syracuse	-12'	34-17	
-	at Louisville - #24	+20'	20-42	
-	Connecticut	-12	24-0	
-	at West Virginia - #12	+14	13-45	

2006 RESULTS				
PIT Rank	Pre- Opponent	Line	Score	Post-
-	Virginia	-3'	38-13	
-	at Cincinnati	-7'	33-15	
-	Michigan St	-3	23-38	
-	The Citadel	NL	51-6	
-	Toledo	-16'	45-3	
-	at Syracuse	-7	21-11	
-	at UCF	-10'	52-7	
-	Rutgers - #19	-6	10-20	
-	at USF	-4	12-22	
-	at Connecticut	-7	45-46	207
-	West Virginia - #8	+10'	27-45	
-	Louisville - #8	+10'	24-48	

PIT Rank	Pre- Opponent	2007 RESULTS	Post Score
-	Eastern Michigan	-20	27-3
-	Grambling St	NL	34-10
-	at Michigan St	+11	13-17
-	Connecticut	-8	14-34
-	at Virginia	+6	14-44
-	Navy	+4	45-48 20
-	Cincinnati - #23	+9	24-17
-	at Louisville	+9	17-24
-	Syracuse	-13	20-17
-	at Rutgers	+12	16-20
-	USF	+9	37-48
-	at West Virginia - #2	+29	13-9

PITT Rank	Pre #25 Opponent	2008 RESULTS	Line	Pos Score
#25	Bowling Green	-13	17-27	
-	Buffalo	-13	27-16	
-	Iowa	E	21-20	
-	at Syracuse	-14'	34-24	
-	at USF - #10	+13'	26-21	
#23	at Navy	-2'	42-21	
#17	Rutgers	-9'	34-54	
-	at Notre Dame	+4'	36-33	
#25	Louisville	-6'	41-7	
#20	at Cincinnati - #19	+6'	21-28	
-	West Virginia	+3	19-15	
#23	at Connecticut	-2'	34-10	

PIT	Pre	2009 RESULTS		Post
Rank	Opponent	Line	Score	
-	Youngstown St	-31	38-3	
-	at Buffalo	-10'	27-14	
-	Navy	7	54-27	
-	at NC State	E	31-38	
-	at Louisville	-7	35-10	
-	Connecticut	-6'	24-21	
-	at Rutgers	-6	24-17	
#20	USF	-6'	41-14	
#14	Syracuse	-21	37-10	
#18	Notre Dame	-6	27-22	
#8	at West Virginia	E	16-19	
#14	Cincinnati #5	42	44-45	

PITT

YR	ROWL / TM BANK	LINE	OPPONENT
----	----------------	------	----------

YR	BOWL/IM RANK	LINE	OPPONENT	SCORE	BOWL GAMES
02	Insight - #24	+2'	Oregon St	38-13	Pittsburgh All-Time Bowl Record 11-15
03	Continental Tire	+3	Virginia	16-23	
04	Fiesta - #19	+15	Utah - #5	7-35	
08	Sun - #18	+1	Oregon St - #24	0-3	
09	Car Care - #17	-1	North Carolina	19-17	

OFFENSE – LAST 7 YEARS – DEFENSE

RET	STF	TOTAL	OFF	OFF	PASS	PASS	OFF	SKS	TOTAL	RET	DEF	TOTAL	DEF	DEF	PASS	PASS	DEF	SKY	
STS	PTS	OFF	RUSH	YPC	PASS	%	YPC	VS	TURIN	STS	PTS	OFF	RUSH	YPC	PASS	%	YPC	VS	
8*	32.1	392	180	4.9	211	64.8	12.2	15	+10	2009	7	19.8	319	106	3.3	213	56.9	16.2	4
8*	27.1	342	139	3.7	203	55.9	12.6	32	-3	2008	5	21.5	317	124	3.6	193	54.3	14.8	3
7	22.8	319	141	3.6	178	60.5	14.0	28	-5	2007	6	24.3	297	130	3.2	167	55.3	12.3	3
6*	31.8	372	123	3.9	249	68.7	11.7	23	+8	2006	5	22.8	363	181	4.6	182	63.0	15.9	2
9*	24.3	336	117	3.2	219	55.9	13.8	30	-4	2005	7	22.1	338	185	4.3	153	49.8	15.3	2
2	27.1	358	98	2.6	260	56.0	13.2	40	+13	2004	7	24.0	395	140	3.8	255	56.4	16.5	2
8	29.9	406	118	3.2	288	58.8	13.6	43	+5	2003	6	23.9	403	185	4.5	218	57.2	16.6	2

Get updated 2010 stats weekly on philsteele.com

OFFENSE – 2009 STATS BY GAME – DEFENSE

PITT 2009		Total	Rush				Pass				Sks				Def				Rush				Pass				Sks				TO				Yds				Gr																																																																																																																																																																																																																																																																																																																																																																																																																																																																																																																																																																																																																																																																																																																																																																																																																																																																																																																																																																																																																																																																																									
ATT	Foe	Off	FD	Att	Yds	Avg	Co	Att	Yds	Sks	vs	Total	Def	FD	Att	Yds	Avg	Co	Att	Yds	Sks	vs	TO	Yds	Gr	Gr	Gr	Gr	Gr	Gr	Gr	Gr	Gr	Gr	Gr	Gr	Gr	Gr	Gr	Gr	Gr	Gr	Gr	Gr	Gr	Gr	Gr	Gr	Gr	Gr	Gr	Gr	Gr	Gr	Gr	Gr	Gr	Gr	Gr	Gr	Gr	Gr	Gr	Gr	Gr	Gr	Gr	Gr	Gr	Gr	Gr	Gr	Gr	Gr	Gr	Gr	Gr	Gr	Gr	Gr	Gr	Gr	Gr	Gr	Gr	Gr	Gr	Gr	Gr	Gr	Gr	Gr	Gr	Gr	Gr	Gr	Gr	Gr	Gr	Gr	Gr	Gr	Gr	Gr	Gr	Gr	Gr	Gr	Gr	Gr	Gr	Gr	Gr	Gr	Gr	Gr	Gr	Gr	Gr	Gr	Gr	Gr	Gr	Gr	Gr	Gr	Gr	Gr	Gr	Gr	Gr	Gr	Gr	Gr	Gr	Gr	Gr	Gr	Gr	Gr	Gr	Gr	Gr	Gr	Gr	Gr	Gr	Gr	Gr	Gr	Gr	Gr	Gr	Gr	Gr	Gr	Gr	Gr	Gr	Gr	Gr	Gr	Gr	Gr	Gr	Gr	Gr	Gr	Gr	Gr	Gr	Gr	Gr	Gr	Gr	Gr	Gr	Gr	Gr	Gr	Gr	Gr	Gr	Gr	Gr	Gr	Gr	Gr	Gr	Gr	Gr	Gr	Gr	Gr	Gr	Gr	Gr	Gr	Gr	Gr	Gr	Gr	Gr	Gr	Gr	Gr	Gr	Gr	Gr	Gr	Gr	Gr	Gr	Gr	Gr	Gr	Gr	Gr	Gr	Gr	Gr	Gr	Gr	Gr	Gr	Gr	Gr	Gr	Gr	Gr	Gr	Gr	Gr	Gr	Gr	Gr	Gr	Gr	Gr	Gr	Gr	Gr	Gr	Gr	Gr	Gr	Gr	Gr	Gr	Gr	Gr	Gr	Gr	Gr	Gr	Gr	Gr	Gr	Gr	Gr	Gr	Gr	Gr	Gr	Gr	Gr	Gr	Gr	Gr	Gr	Gr	Gr	Gr	Gr	Gr	Gr	Gr	Gr	Gr	Gr	Gr	Gr	Gr	Gr	Gr	Gr	Gr	Gr	Gr	Gr	Gr	Gr	Gr	Gr	Gr	Gr	Gr	Gr	Gr	Gr	Gr	Gr	Gr	Gr	Gr	Gr	Gr	Gr	Gr	Gr	Gr	Gr	Gr	Gr	Gr	Gr	Gr	Gr	Gr	Gr	Gr	Gr	Gr	Gr	Gr	Gr	Gr	Gr	Gr	Gr	Gr	Gr	Gr	Gr	Gr	Gr	Gr	Gr	Gr	Gr	Gr	Gr	Gr	Gr	Gr	Gr	Gr	Gr	Gr	Gr	Gr	Gr	Gr	Gr	Gr	Gr	Gr	Gr	Gr	Gr	Gr	Gr	Gr	Gr	Gr	Gr	Gr	Gr	Gr	Gr	Gr	Gr	Gr	Gr	Gr	Gr	Gr	Gr	Gr	Gr	Gr	Gr	Gr	Gr	Gr	Gr	Gr	Gr	Gr	Gr	Gr	Gr	Gr	Gr	Gr	Gr	Gr	Gr	Gr	Gr	Gr	Gr	Gr	Gr	Gr	Gr	Gr	Gr	Gr	Gr	Gr	Gr	Gr	Gr	Gr	Gr	Gr	Gr	Gr	Gr	Gr	Gr	Gr	Gr	Gr	Gr	Gr	Gr	Gr	Gr	Gr	Gr	Gr	Gr	Gr	Gr	Gr	Gr	Gr	Gr	Gr	Gr	Gr	Gr	Gr	Gr	Gr	Gr	Gr	Gr	Gr	Gr	Gr	Gr	Gr	Gr	Gr	Gr	Gr	Gr	Gr	Gr	Gr	Gr	Gr	Gr	Gr	Gr	Gr	Gr	Gr	Gr	Gr	Gr	Gr	Gr	Gr	Gr	Gr	Gr	Gr	Gr	Gr	Gr	Gr	Gr	Gr	Gr	Gr	Gr	Gr	Gr	Gr	Gr	Gr	Gr	Gr	Gr	Gr	Gr	Gr	Gr	Gr	Gr	Gr	Gr	Gr	Gr	Gr	Gr	Gr	Gr	Gr	Gr	Gr	Gr	Gr	Gr	Gr	Gr	Gr	Gr	Gr	Gr	Gr	Gr	Gr	Gr	Gr	Gr	Gr	Gr	Gr	Gr	Gr	Gr	Gr	Gr	Gr	Gr	Gr	Gr	Gr	Gr	Gr	Gr	Gr	Gr	Gr	Gr	Gr	Gr	Gr	Gr	Gr	Gr	Gr	Gr	Gr	Gr	Gr	Gr	Gr	Gr	Gr	Gr	Gr	Gr	Gr	Gr	Gr	Gr	Gr	Gr	Gr	Gr	Gr	Gr	Gr	Gr	Gr	Gr	Gr	Gr	Gr	Gr	Gr	Gr	Gr	Gr	Gr	Gr	Gr	Gr	Gr	Gr	Gr	Gr	Gr	Gr	Gr	Gr	Gr	Gr	Gr	Gr	Gr	Gr	Gr	Gr	Gr	Gr	Gr	Gr	Gr	Gr	Gr	Gr	Gr	Gr	Gr	Gr	Gr	Gr	Gr	Gr	Gr	Gr	Gr	Gr	Gr	Gr	Gr	Gr	Gr	Gr	Gr	Gr	Gr	Gr	Gr	Gr	Gr	Gr	Gr	Gr	Gr	Gr	Gr	Gr	Gr	Gr	Gr	Gr	Gr	Gr	Gr	Gr	Gr	Gr	Gr	Gr	Gr	Gr	Gr	Gr	Gr	Gr	Gr	Gr	Gr	Gr	Gr	Gr	Gr	Gr	Gr	Gr	Gr	Gr	Gr	Gr	Gr	Gr	Gr	Gr	Gr	Gr	Gr	Gr	Gr	Gr	Gr	Gr	Gr	Gr	Gr	Gr	Gr	Gr	Gr	Gr	Gr	Gr	Gr	Gr	Gr	Gr	Gr	Gr	Gr	Gr	Gr	Gr	Gr	Gr	Gr	Gr	Gr	Gr	Gr	Gr	Gr	Gr	Gr	Gr	Gr	Gr	Gr	Gr	Gr	Gr	Gr	Gr	Gr	Gr	Gr	Gr	Gr	Gr	Gr	Gr	Gr	Gr	Gr	Gr	Gr	Gr	Gr	Gr	Gr	Gr	Gr	Gr	Gr	Gr	Gr	Gr	Gr	Gr	Gr	Gr	Gr	Gr	Gr	Gr	Gr	Gr	Gr	Gr	Gr	Gr	Gr	Gr	Gr	Gr	Gr	Gr	Gr	Gr	Gr	Gr	Gr	Gr	Gr	Gr	Gr	Gr	Gr	Gr	Gr	Gr	Gr	Gr	Gr	Gr	Gr	Gr	Gr	Gr	Gr	Gr	Gr	Gr	Gr	Gr	Gr	Gr	Gr	Gr	Gr	Gr	Gr	Gr	Gr	Gr	Gr	Gr	Gr	Gr	Gr	Gr	Gr	Gr	Gr	Gr	Gr	Gr	Gr	Gr	Gr	Gr	Gr	Gr	Gr	Gr	Gr	Gr	Gr	Gr	Gr	Gr	Gr	Gr	Gr	Gr	Gr	Gr	Gr	Gr	Gr	Gr	Gr	Gr	Gr	Gr	Gr	Gr	Gr	Gr	Gr	Gr	Gr	Gr	Gr	Gr	Gr	Gr	Gr	Gr	Gr	Gr	Gr	Gr	Gr	Gr	Gr	Gr	Gr	Gr	Gr	Gr	Gr	Gr	Gr	Gr	Gr	Gr	Gr	Gr	Gr	Gr	Gr	Gr	Gr	Gr	Gr	Gr	Gr	Gr	Gr	Gr	Gr	Gr	Gr	Gr	Gr	Gr	Gr	Gr	Gr	Gr	Gr	Gr	Gr	Gr	Gr	Gr	Gr	Gr	Gr	Gr	Gr	Gr	Gr	Gr	Gr	Gr	Gr	Gr	Gr	Gr	Gr	Gr	Gr	Gr	Gr	Gr	Gr	Gr	Gr	Gr	Gr	Gr	Gr	Gr	Gr	Gr	Gr	Gr	Gr	Gr	Gr	Gr	Gr	Gr	Gr	Gr	Gr	Gr	Gr	Gr	Gr	Gr	Gr	Gr	Gr	Gr	Gr	Gr	Gr	Gr	Gr	Gr	Gr	Gr	Gr	Gr	Gr	Gr	Gr	Gr	Gr	Gr	Gr	Gr	Gr	Gr	Gr	Gr	Gr	Gr	Gr	Gr	Gr	Gr	Gr	Gr	Gr	Gr	Gr	Gr	Gr	Gr	Gr	Gr	Gr	Gr	Gr	Gr	Gr	Gr	Gr	Gr	Gr	Gr	Gr	Gr	Gr	Gr	Gr	Gr	Gr	Gr	Gr	Gr	Gr	Gr	Gr	Gr	Gr	Gr	Gr	Gr	Gr	Gr	Gr	Gr	Gr	Gr	Gr	Gr	Gr	Gr	Gr	Gr	Gr	Gr	Gr	Gr	Gr	Gr	Gr	Gr	Gr	Gr	Gr	Gr	Gr	Gr	Gr	Gr	Gr	Gr	Gr	Gr	Gr	Gr	Gr	Gr	Gr	Gr	Gr	Gr	Gr	Gr	Gr	Gr	Gr	Gr	Gr	Gr	Gr	Gr	Gr	Gr	Gr	Gr

