

UTAH UTES

POSITION OUTLOOK FOR 2010

QUARTERBACKS - Utah produced the #1 overall pick in the '05 NFL draft in Alex Smith (68%, 32-4 rush, 631 rush '04). Brian Johnson and Brett Ratliff held down the spot the next 4 years with Johnson missing '06 and not being 100% in '07. In '08 Johnson led Utah to an undefeated year throwing for 2,972 (68%) with a 27-9 ratio (1 of 5 finalists for Unitas Award). Corbin Louks was brought in as the running QB (27 rush att) and att just 7 passes. Louks was the frontrunner out of the spring in '09 but had to hold off Terrance Cain, who led the NUCAA in passing yards (3138, 68%) in '08 and hit 72% in '07 and true frosh Jordan Wynn (PS#52), who was IFS. It was a 3-way tussle into Aug but then Whittingham announced that Wynn was #1, Cain #2 and Louks #3 (Louks transferred to Nevada). Cain overtook Wynn at the end of Aug. After 5 games his stats were very similar to Johnson's except he brought more running ability. Cain's arm strength limited the offense but he still threw for 1,624 (63.7%, 11-5) and was the #3 rusher (318). Wynn appeared headed for a RS season. In the 2H vs Wyo (gm 8) they took the RS off of Wynn and he sparked the team to a win. Wynn then started the final 5 and the offense avg 34.2 ppg in those games (27.1 ppg prior). This year both QB's return. Added to the mix is Griff Robles (6'4" 226 rF, PS#39) who knocked a LB out for 12 wks with a tough hit last Aug and this year's true frosh. This unit is vastly more exp'd and Wynn should be one of the top QB's in the MWC.

RUNNING BACKS - In '07 Matt Asiata (PS#17JC) won the starting job but broke his leg in the opener. They were planning to RS Darrell Mack but he started in Wk 3 and rushed for 1,204 (4.8). In 2008, Mack and Asiata ret'd but were banged up in Aug and Mack's numbers dropped to 541 (4.4). Asiata also lined up in the Wildcat package and led but with just 707 (4.8, 12 TD). Whittingham had said he wanted to use the elusive Eddie Wide more but he had just 183 (6.1). Last year they had to replace Mack (11 st). In the first 3 Asiata rushed for 304 but was lost for the year in Wk 4. While Asiata is a power back (229 lb), Wide (4.47 spd) brought a different skill set. Surprisingly Wide set a school record with 6 consec 100 yard gms becoming just the 11th RB in school history to top 1,000 with 1,069 (5.3). Depth at RB was limited by injuries. Sausan Shakerin (6'2" 222 So, PS#48) rushed for 100 vs NM but was banged up (198, 5.5). They used Shaky Smithson (who is moving to WR) in the Wildcat package and he rushed for 99 (3.7). Adding depth is Beau Burton (5'9" 204 rF, PS#189), Mychal Robinson (5'8" 192 Jr), Tauni Vakapuna (5'10" 229 Jr) and Jake Cook (5'10" 171 rF, PS#107). This season Asiata has been granted a 6th year and he and Wide make up the best RB combo in the MWC.

RECEIVERS - In '08 Utah had to replace 3 of their top 4 rec's. They generally travelled with 8 WR's but in '08 mainly used just 5. Last year had to replace their top 3. The top returnees in '09 were David Reed, who had 427 (17.1) and Jereme Brooks, who had 331 (11.0). Reed was by far the top guy LY setting school records for rec (81) and yds (1188, 14.7). Brooks got off to a slow start but was one of Wynn's favorite targets and finished with 696 (12.4). Aiona Key (PS#57JC, 1 rec '08) finished #3 with 227 (8.7). John Peel (PS#82) was the only other WR to top 200 (209, 13.1). This year they lose Peel (4 st), Reed (13 st, #5DC BAL), Key (11 st) and TE Chris Joppru (2 st, 0 rec). Not listed below are Sean Fitzgerald (6'3" 205 rF, PS#248), Griffin McNabb (5'8" 168 rF) and Jake Orchard (6'2" 194 So). While they have to replace 3 of their top 4, they have equal exp to '09.

OFFENSIVE LINE - In '08 Utah had 9 of the top 10 OL's back. While the Utes had their highest ever finish in the AP poll, the OL stats were only avg with 156 ypg (4.1) with 25 sks (6.0%). Last year they had to replace 2 st's but their top OL, 1st Tm MWC LT Lane Beadles was back. Despite some minor injuries that forced a rotation that included inexp'd players, the Utes improved to 160 ypg rush (4.3) and trimmed the sks to 20 (4.9%). This yr they lose their star 1st Tm AA Beadles (4Y st, #2DC DEN) and 2nd

stringers RT Viliamu Nau (4 gm) and C Tyler Williams (3 gm). Four st's return incl 1st Tm MWC LG Caleb Schlauderaff, 2nd Tm MWC C Zane Taylor plus they add in PS#18JC John Cullen. Not listed below are Mike Steckling (6'6" 240 rF) and Nick Binks (6'5" 260 So, PS#180) who moved from DE.



DE Derrick Shelby

DEFENSIVE LINE - This is Utah's primary recruiting emphasis annually and they have sent many DL's to the NFL. In 2008's magical season they had to replace 1st and 2nd Tm MWC players for the 2nd straight year but led by DE Koa Misi and Paul Kruger, allowed just 99 ypg rush (3.1) with 29 sks. Last year they had to replace 2 st's (#2DC) and 4 returned with starting exp. They expected to add PS#2JC James Aiono but he did not enroll until Jan '10. The unit was also hit hard by injuries with no player starting all 13 and only 1 starting 10+. As you would expect, the numbers slipped (138 ypg, 3.7). This year they lose 1st Tm MWC DE Misi (12 st, 71 tkl, 5 sk, #2DC MIA) and NT Kenape Eliapo (7 st, 16 tkl). DE Derrick Shelby tore his ACL (Wk 10) and hopefully will return 100%. They have 5 back who started LY. Unlike the last 2 years when they lost their top 2 DL's, this year they only lose one star and get a big addition in Aiono.

LINEBACKERS - Last year the Utes had all 3 st's back and it was regarded as the deepest, best unit on the team heading into '09. Nai Fotu (9 st '08) moved to DE. The team's top LB, Stevenson Sylvester (#1 tkl'r) earned 1st Tm MWC. This year they lose Sylvester (13 st, 5 tfl, #5DC PIT), MLB Mike Wright (13 st, #2 tkl'r, 5.5 tfl), Kapa Gaison (10 st, #11 tkl'r, 4 sk) and Fotu (1 st, 23 tkl) who tore his ACL early spg. Chad Manis (PS#52JC) moved from QB last year (4 tkl) and JJ Williams (7 sts '06) is now 2 yrs removed from his mission. They also add in a VHT true frosh. Adding depth are Kalen Adams (6'0" 220 Fr) and Dave Fagergren (6'0" 204 So) and naturally this unit is my biggest concern on the D. This unit much less experienced.

DEFENSIVE BACKS - After a young Utah secondary finished #4 in my PDR in '07, they had 9 of their top 10 back in '08 and finished #2. Last year they had to replace 2 st's (#2 and #6 DC's) but had plenty of speed at CB with RJ Stanford and Brandon Burton both sub-4.4's. The Utes finished #10. This year they lose 1st Tm MWC FS Robert Johnson (13 st, 70 tkl, 6 int, 6 pbu, #5DC TEN), 3rd Tm MWC Stanford (13 st, 46 tkl, 8 pd, #7DC CAR), SS Joe Dale (11 st, 48 tkl, 5 pd) and CB Justin Jones (12 tkl). Not listed in the PSL are Chris Sciarretta (5'10" 220 rF), Lolo Tenifa (5'11" 197 Jr) and Tyler Whittingham (5'10" 190 Jr). Burton is solid at one CB slot and they usually produce a solid secondary, but this unit still looks to be down a few notches.

SPECIAL TEAMS - In '06 Louie Sakoda led the nation in net punting (41.4) and hit 16 of 20 FG's. Utah moved up to #16 in my ST rankings. In '07 Whittingham noted that the new KO rule actually helped them as Ben Vroman (28 TB in '06) had a strong enough leg. Vroman had 17 TB. Sakoda was the best ST player in the country as he avg 44.3 on punts (36.6 net) and hit 19 of 22 FG's (long 51). Derek Richards was #9 in the FBS in PR's (14.7) and they finished #23. Sakoda was back in '08. After blocking just 2 punts in Whittingham's first 3 years, he brought

in Aiona Key (5 blk punt JC). Key was not eligible until Wk 4 but blk'd 3 punts (1 ret for TD). Sakoda hit an amazing 22-24 FG's (long 53) and avg 42.1 punting (35.7 net) while Vroman had 44 TB giving the Utes an FBS leading 3 year total of 93. JC David Reed avg 25.4 on KR and the unit finished #20. Last year they had to replace Sakoda. Vroman hit just 1-4 FG's. Joe Phillips took over and hit his first 7 FG's but just 2 from over 44 as Whittingham passed up some FG opportunities. Phillips was a semifinalist for the Lou Groza Award (20-22 FG's, L/48). Vroman had 32 TB's on 75 KO's. Sean Sellwood took over at P and the South African native avg 42.9 (net 37.0). This year they only lose Vroman and should improve upon last year's #38 finish.

COACHES - Kyle Whittingham was fought over by BYU and Utah for the HC job but he opted to stay. Whittingham started as the DC here in '95 and is a BYU grad. He made some great initial hires in OC Andy Ludwig and DC Gary Andersen but LY Ludwig left for Cal and Andersen became the HC at Utah St. Whittingham elevated RB coach Dave Schramm to OC and LB coach Kalani Sitake to DC. Whitt promoted Aaron Roderick (WR's) to co-OC. He also held record setting QB Brian Johnson (QB cch).

PHIL'S FORECAST

In '04 I mentioned that 4 of my then-7 sets of power ratings called for the Utes to have an unbeaten season and they achieved that AND became the first BCS buster. They dominated #19 Pitt 35-7 in the Fiesta Bowl while outscoring opp by an avg of 45.2-19.5 (+132 ypg). Their closest gm was a 14 pt win. Their #4 finish in the AP poll was their highest ever at that time. In '05 they lost HC Urban Meyer as well as QB Smith. They moved the ball well in '05 avg 474 ypg but scored just 30 ppg. They had a 4-4 record in MWC play but were +86.5 ypg (league best). With backup QB Brett Ratliff, they knocked off BYU then upset #24 GT 38-10 in the Emerald Bowl. The Utes had 12 ret st's in '06 and finished 3rd at 5-3 with 2 tough losses as they led NM 24-3 and BYU 24-10 (BYU TD last play). In '07 they had to face BYU and TCU on the road and injuries greatly affected them with top OL Boone, QB Johnson, RB Asiata, WR Casteel and other key players being lost for part or all of the ssn. They knocked off Navy in the Poinsettia Bowl but for the 3rd straight year, finished unranked (9-4). While they were +11 in TO's, they had 51 sts lost due to injury. In '08 BYU was pretty much the consensus pick to win the MWC and of all the sources documented by football.stassen.com, my mag was the only one to pick Utah to win the MWC Title outright and some had the Utes picked as low as 3rd. I mentioned that 4 of my then-8 sets of power ratings called for Utah to go unbeaten and I picked the Utes as my top non-BCS team (pg 22). I never really knew how many football fans there were in Utah until my mag hit the newsstands and my website was bombarded by BYU fans wondering about my overall football IQ (to put it nicely). Utah had some close calls but when they beat #16 BYU they were unbeaten and advanced to the Sugar Bowl. They thoroughly dominated Bama 31-17 (349-208 yd) and received 16 first place votes in the AP poll finishing #2 and were the nation's only undefeated FBS team. Utah did benefit from +13 in TO's and 5 net close wins (pg 29). The Utes only had 12 starts lost to injury and just 11 ret st's in '09. They once again had to play both TCU and BYU on the road and as expected, the record dropped some to 10-3. They had the nation's longest winning streak (16) end in Autzen Stadium which is one of the toughest venues to play (only outgained by 15 yds). They trailed Colo St 17-3 but got two 4Q TD's to pull out the win. They were outgained by 51 yds vs AF but pulled out a 23-16 OT win. They trailed Wyoming 10-3 at the half but rallied for the win. They were pumped up for the road matchup at TCU but were thrashed 55-28 even with scoring a TD with 2:29 left. In a TCU/BYU sandwich they wiped out SDSU 38-7. They trailed BYU 20-6 heading into the 4Q but ended up losing in OT by 3. In the bowl Cal jumped out to a 14-0 lead but Utah dominated after that and finished 10-3 and #18. This yr the Utes get both BYU and TCU at home. They have 12 ret starters but are much more exp'd at QB. Once Jordan Wynn took over at QB, Utah went from avg'ing 27.1 ppg to 34.2 ppg. Despite their 6-2 MWC record, they did only outgain MWC foes by 44.1 ypg. Their 9 straight bowl win streak is the longest in the NCAA and they had 6 players drafted. The MWC Title probably

rides on the outcome of the Nov 6th gm vs TCU. Unlike '04 and '08 none of my power ratings call for an unbeaten yr (tough non-conf schedule) but it will be another successful season.

TOP NEWCOMERS FOR 2010

DL James Aiono 6-4 290 PS#2JC '09
DL VJ Fehoko 6-0 222 PS#24
OL Ron Tongaonevai 6-3 300 PS#18JC
WR Kenneth Scott 6-3 192 PS#59
QB Joe Kruger 6-7 245 PS#89
DB Tyler Shreve 6-3 218 PS#58
RB Princeton Collins 5-11 198 PS#89
CB Zach Bolton 6-2 271 PS#136
WR Martavius Lee 6-1 185 PS#121JC
QB Brian Blechen 6-2 203 PS#92
RB Lucky Radley 5-9 187 PS#112
DB Damian Payne 6-0 200 PS#164
WR Ders Anderson 6-1 157 PS#147
LB Jacoby Hale 6-0 192 PS#152
WR Terrell Reese 6-0 198 PS#161
DB Joseph Smith 5-9 179 PS#206
DL Star Lotulelei 6-4 300 PS#221JC
OL Ron Tongaonevai 6-3 320 PS#394JC
DL Sione Tipotupota 6-4 260 PS#316
RB Shawn Alsia 6-0 248 PS#469JC
DB Michael Walker 5-9 171 PS#504
TE Westlee Tonga 6-4 225 PS#148 '07
DB Wykie Freeman 5-11 158 PS#619
DB Mike Honeycutt 5-10 170 PS#1663

OFFENSE

JERSEY #
IN RED

2010 PROJECTED STARTING LINEUP

JERSEY #
IN RED

DEFENSE

QB 3 JORDAN WYNN SO. 6-1 195 PS#52. L/5 st, 6 gm, 1329 (58%), 8-4 ratio true. 7 Terrace Cain (5'11" 194 Sr) **PS#9JC.** First 8 st, lost job, 1624 (64%), 11-5 ratio LY.
RB 36 EDDIE WIDE SR. 5-10 195 PS#121.4 st, 227 (4.6) '07/08. 10 st, 1069 (5.3).
1st Tm MWC LY. 4 Matt Asiata (5'11" 229 Sr) PS#17JC. 4 st, 1053 (4.7) 3Y. Granted 6th yr.
WR 11 Luke Matthews So. 6-1 201 PS#111.3 st, 108 (12.0), 17 PR (10.1), 3rd Tm MWC PR rF. Martavius Lee PS#121JC. orig commit LSU. **20 Zach Wade (6'3" 198 Jr) PS#426.**
WR 10 DeVonte Christopher So. 6-1 195 **PS#27.** RS QB '08. WVR spg '09, 38 (19.0), 14 KR (24.1). 1 Shaky Smithson (5'11" 202 Sr) PS#218JC. 100 rec yd (7.7) from RB spot LY. OFS '10.
WR 85 JEROME BROOKS SR. 5-7 170 7 st, 25 gm, 514 (11.4) 2Y. 12 st, 696 (12.4). **2nd Tm MWC LY.** Kenneth Scott PS#59. **88 Jamal Smith (6'2" 191 Jr) PS#213.** 8 Fatu Moala (5'11" 178 rF).
TE 81 KENDRICK MOEAI SO. 6-5 236 PS#192.5 st, 77 (19.2) rF. **84 Brad Clifford (6'4" 248 Sr).** 2 st, 1 rec, 25 gm, 3Y. **89 Dallin Rogers (6'4" 230 So) PS#118.** 1 st, 45 (6.4) '07. Mission '08/09.
C 77 ZANE TAYLOR SR. 6-2 309 PS#234. 13 st, 21 gm 2Y. 13 st C, **2nd Tm MWC LY.** 64 Vincent Jones (6'3" 291 rF) PS#101. **LS 62 Patrick Greene (6'2" 221 So).** 13 gm rF.
RG 54 TEVITA STEVENS SO. 6-1 300 PS#248. 10 st LG, 13 gm, 661 pl (510) won LY.
LG 72 CALEB SCHLAUDERAFF SR. 6-4 302 PS#289. 10 st rF, 13 st LG '08. 13 st LG, **1st Tm MWC,** 747 pl (624) won LY. **71 Walter Watts (6'2" 297 Sr) PS#45.** 10 gm 2Y. 2 st RG, 9 gm LY.
RT 70 TONY BERGSTROM JR. 6-6 304 PS#253. 1 st LT true. 13 st RT, 816 pl (662) won LY.
LB 56 KAPUA JAI (6'5" 301 rF) PS#159. 67 Derek Tuimaga (6'4" 317 So) **PS#85.** 13 gm rF.
LT NA John Cullen Jr. 5-9 270 **PS#18JC.** 74 Sam Brenner (6'3" 304 So) PS#241. 13 gm true. **79 Percy Tuomola (6'4" 300 rF).** **66 Matt Snow (6'5" 265 So)** +40 lbs spg '10.
K 39 JOE PHILLIPS SR. 5-11 192 PS#273JC. Big surprise, 20-22 FG, L/48, 38-39 PAT, UT rec'd 5 FG's in single gm, 3rd Tm MWC **PS#39.** Nick Marsh (5'11" 192 rF) PS#66.

DE 94 Christian Cox Sr. 6-1 250 1 tkl '08. 3 st, 13 gm, 31 tkl, 8 tfl, 3rd Tm MWC LY.
96 Junior Tu'ione (6'4" 265 Sr) PS#134. 13 gm, 11 tkl, 2 tfl, 2Y. **53 Eric Dago (6'2" 230 rF) PS#327.**
2D 44 DAVE KRUGER SR. 6-5 275 PS#74.6 st, 37 tkl, 6 tfl rF. **85 Latu Heimuli (6'3" 305 rF) PS#74.** 55 Neli A'sa (6'2" 287 Sr) PS#192. 3 tkl 3Y. **63 Joape Pela (6'2" 280 So) PS#256JC.**
NT 98 SEALVER SILIGA JR. 6-3 299 PS#211. 7 tkl true. 9 st, 49 tkl, 6.5 tfl, HM MWC LY.
91 James Aiono (6'4" 290 Jr) PS#2JC. Sign - no enroll LY. **58 LT Tuipulotu (6'1" 280 rF) PS#160.**
DE 90 DERRICK SHELBY JR. 6-3 255 10 st, 31 tkl rF. 10 st (ACL), 44 tkl, 8 tfl LY. Lei Talamaivao (6'2" 270 Jr) 14 tkl true. RS (inj) '08. 4 st, 20 tkl, 5 tfl LY. Trevor Reilly (6'5" 235 rF).
LSB 18 Chad Manis Sr. 6-5 235 PS#52JC. RS here '07. QB '08. 13 gm, 4 tkl, 2 tfl.
32 Chaz Walker (5'11" 218 Jr) PS#467. 26 gm, 30 tkl, 2Y. **48 Tyson Buck (6'2" 220 rF).**
MLB NA VJ Fehoko Sr. 6-0 222 **PS#24.** 52 Matt Martinez (6'0" 228 Jr). 1 gm (ACL).
rF. MedRS '08. 11 gm, 6 tkl LY. **47 Max Moala (5'11" 241 Jr).** **93 Semisi Makai (5'11" 257 Fr).**
ROV 13 JJ Williams Jr. 6-0 220 7 st, 55 tkl '06. Mission. 1 st, 20 tkl LY. **45 Boo Andersen (6'2" 230 So) 13 gm rF.** **51 Jamel King (6'2" 230 Jr) PS#427.** 11 tkl true. RS '08. 8 gm, 3 tkl last yr.
CB 9 Conroy Black Jr. 6-0 180 **PS#85JC.** RS (inj) LY. **21 Lamar Chapman (5'8" 176 Sr) PS#71JC.** RS here '08. 4 st, 46 tkl, 8 pd LY. **26 Ryan Lacy (5'10" 185 So) PS#249.** 13 gm, 7 tkl rF.
CB 27 BRANDON BURTON JR. 6-0 185 PS#443. 3 tkl rF. 12 st, 47 tkl, 11 pd LY. **8 Kameron Yancy (5'9" 183 Sr) PS#205JC.** 3 tkl LY. **14 Travis Walzer (5'9" 190 Fr).** Ben Soliven (5'9" 183 So).
SS 33 Justin Taplin-Ross Sr. 6-3 214 PS#470. 1 st, 38 tkl 3Y. **31 Victor Spikes (6'0" 200 So) PS#316.** 2 tkl true. RS rF. Spg '10. **28 Reggie Topps (5'11" 180 So) PS#470.** 7 tkl, 12 gm rF.
FS 37 Chris Washington rF. 6-0 205 PS#104. RS due to inj LY. **57 Damian Payne PS#164.** IFS. **35 Greg Bird (6'2" 213 Jr) 3 tkl, 7 gm, 2Y.** **19 Bryce Bennion (6'0" 195 So).** 1 tkl, 2 gm LY.
P 86 SEAN SELLWOOD SO. 6-3 200 69 punts (42.9), L/63, 2 blk'd, 19/220, 5TB, 30FC, 37.0 net, HM MWC. **30 Nick Marsh (5'11" 192 rF) PS#66.** RS due to susp LY. **33 Joe Phillips.**

UTAH UTEs

Salt Lake City, Utah
Weather (801) 575-7669

KYLE WHITTINGHAM (Career 47-17)
6th Year at Utah
Whittingham's Bowl Record: 5-0

Phil's Homefield Edge-4.75
2010 Schedule Difficulty #83

Date	Opponent	TURF	LINE	Final Score	W
Sep. 2	Pittsburgh (Thur)	A			
Sep. 11	UNLV	A			
Sep. 18	at New Mexico	G			
Sep. 25	San Jose St	A			
Oct. 2					
Oct. 9	at Iowa St	G			
Oct. 16	at Wyoming	A			
Oct. 23	Colorado St	A			
Oct. 30	at Air Force	A			
Nov. 6	TCU	A			
Nov. 13	at Notre Dame	G			
Nov. 20	at San Diego St	G			
Nov. 27	BYU	A			
Dec. 4					

CAREER PASSING LEADERS
1. Scott Mitchell 8,836 '87-'89
2. Brian Johnson 7,853 '04-'06, '07-'08
3. Mike McCoy 7,559 '92-'94

CAREER RUSHING LEADERS
1. Eddie Johnson 3,219 '84-'88
2. Tony Lindsay 2,995 '77-'80
3. Chris Fuamatu-Ma'afala 2,630 '95-'97

CAREER RECEIVING LEADERS
1. Bryan Rowley 3,143 '89-'93
2. Kevin Dyson 2,726 '94-'97
3. Carl Harry 2,283 '86-'88

Utah is 16-5 in home openers including 3 str vs BCS tms (Ariz, A&M & Indiana). The only meeting was the '04 Fiesta Bowl (Utah won 35-7) being the 1st tm to crash a BCS bowl.

Utah is 13-1 vs UNLV with the loss a 27-0 shutout in 2007. LY despite being out FD 23-14 the Utes had control after an int led to a 8/2pl TD and on the next drive got a 64 yd IR TD.

LY in this game, true frosh QB Wynn made his 1st start (18-28, 6470, 297, 2-1). RB Wide set the Utah record with his 6th 100 yd game and totaled 122 rush yds in the 3Q alone!

Last year this game was tied at 7 until the 4Q. SJST pulled within 7 but Phillips hit a 24 yd FG with :13 left to seal the 10 pt win. Utah did miss 2 FG's and was SOD at the SJ1.

BONUS: The Utes are 10-0 under Whittingham with more than a week off.

Utah is 0-4 vs Iowa St but the last meeting was in 1976. The Utes are 3-7 on the road (reg ssn) vs BCS tms but beat Mich in '08 and have beaten a BCS team 7 of the L8Y.

The Utes have outscored Wyoming 112-17 combined the last 3 ssns. Utah has won 9 of the L10 gms vs Wyoming. Coming into 2010, Utah is 9-4 their L13 MWC AG's.

LY Robert Johnson had 3 int, 2 of which led to Utah points. Cain comp 12 of 13 (1 thru hands) in the 2H to rally from a 17-3 deficit. Utah have beaten CSU 4 str yrs (avg score 34-15).

Utah has won 3 of the L4 but the avg win is by 5 ppg with none being decided by more than a TD. LY Sylvester stuffed AF's QB on 4&2 from the 7 in OT to preserve the win.

Last year's 55 points were the most allowed by a Ute squad since 1996. Despite LY's loss, Utah still leads the all-time series 5-2. The home team is 4-1 in MWC meetings.

First meeting. Utah is 8-3 since '02 on the road in November. This will be the latest non-conf match up scheduled in the regular season for the Utes since MWC play began (1999).

Utah has won 9 of the last 11 in this series including 4 straight (by an avg of 32 ppg). In the last 2 meetings the Utes have led at HT by a 38-0 & 35-0 score.

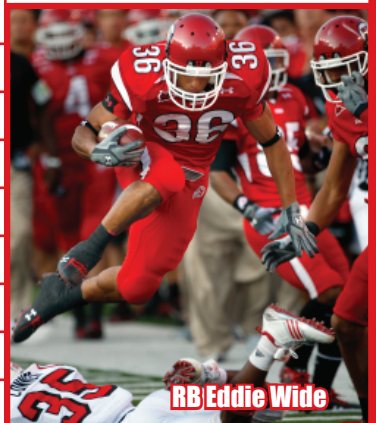
The Utes have lost 3 times in the last 4 years to the Cougars (4 str wins prior). This game has been decided by a TD or less 11 times in 13 games incl LY's OT loss.

Whittingham's records at UTAH

47-17 Straight Up	1-1 Vs Top 10
25-5 Home	5-5 Vs Top 25
17-12 Away	9-4 Vs BCS Teams
5-0 Neutral	10-0 Off A Loss
28-12 Vs Conference	13-4 Off A Bye

2009 RECORD: (10-3)
RETURNING STARTERS:
OFFENSE: 8*
DEFENSE: 4
LETTERMEN:
Returning: 29 (22,24,3)
Lost: 24 (10,13,1)

2009 AVERAGE ATTENDANCE: 45,155 (#53)
MOUNTAIN WEST



RB Eddie Wide

STADIUM: RICE-ECCLES STADIUM (45,017) (#73)
PLAYING SURFACE: ARTIFICIAL (FieldTurf)

	2000	2001	2002	2003	2004	2005	2006	2007	2008	2009	10Yr Total
STRAIGHT UP	4-7	8-4	5-6	10-2	12-0	7-5	8-5	9-4	13-0	10-3	86-36
Home	1-5	5-0	3-2	5-1	6-0	4-2	4-2	5-1	6-0	6-0	45-13
Away	3-2	2-4	2-4	4-1	5-0	2-3	3-3	3-3	6-0	3-3	33-23
Neutral	0-0	1-0	0-0	1-0	1-0	1-0	1-0	1-0	1-0	1-0	8-0
vs Conf	3-4	4-3	3-4	6-1	7-0	4-4	5-3	5-3	8-0	6-2	51-24
vs Non-Conf	1-3	4-1	2-2	4-1	5-0	3-1	3-2	4-1	5-0	4-1	35-12
ATS	4-7	8-4	4-7	10-2	10-2	4-8	7-4-1	7-6	8-4	6-7	68-51-1
Home Fav	3-5	3-2	2-3	4-1	5-1	1-5	2-1-1	3-2	2-2	3-3	25-25-1
Home Dog	1-0	0-0	0-0	1-0	0-0	0-0	1-0	1-0	1-0	0-0	5-0
Away Fav	3-1	1-2	1-4	1-1	4-1	0-2	3-2	1-1	3-2	1-2	18-18
Away Dog	0-1	3-0	1-0	3-0	0-0	2-1	0-1	2-2	1-0	1-2	13-7
Neutral	0-0	1-0	0-0	1-0	1-0	1-0	1-0	1-0	1-0	1-0	7-1
vs Conf	3-4	4-3	1-6	5-2	5-2	3-5	5-2-1	5-3	5-3	4-4	40-34-1
vs Non-Conf	1-3	4-1	3-1	5-0	5-0	1-3	2-2	2-3	3-1	2-3	28-17
Off SU Win	2-2	5-2	1-3	7-2	9-2	2-4	5-2	6-2	7-4	3-6	47-29
Off SU Loss	2-4	3-1	2-4	2-0	0-0	2-3	2-1-1	1-3	0-0	3-0	17-16-1

2009 STATISTICAL LEADERS

RUSHING	ATT	GAIN	LOST	NET	TD	AVG	PLAYER	TKL	SKS	TFL	PBU	INT
Eddie Wide	203	1101	32	1069	12	5.3	Stevenson Sylvester	81	2	3	2	1
Matt Asiata	74	342	12	330	4	4.5	Mike Wright	79	1	4	5	0
Terrance Cain	87	421	103	318	2	3.7	Koa Misi	71	5	4	5	0
Sausan Shakerin	36	210	12	198	1	5.5	Robert Johnson	70	0	4	6	6
Shaky Smithson	27	106	7	99	3	3.7	Sealver Siliga	49	1	5	5	4
Jerome Brooks	6	57	6	51	1	8.5	Joe Dale	48	1	4	4	1
Jordan Wynn	23	69	57	12	0	0.5	Brandon Burton	47	1	3	10	1
PASSING	ATT	COMP	PCT	YDS	TD	INT	Lamar Chapman	46	1	3	6	2
Terrance Cain	215	137	63.7	1624	11	5	RJ Stanford	46	0	2	7	1
Jordan Wynn	179	104	58.1	1329	8	4	Derrick Shelby	44	3	5	0	0
Shaky Smithson	7	2	28.6	10	0	0	Kepa Gaison	44	4	3	2	0
RECEIVING	REC	YDS	AVG	TD	LONG		Dave Kruger	37	1	5	4	5
David Reed	81	1188	14.7	5	90		Christian Cox	31	5.5	2.5	3	1
Jerome Brooks	56	696	12.4	7	69		Justin Taplin-Ross	29	0	2.5	3	0
Aiona Key	26	227	8.7	1	20		Nai Fotu	23	1.5	2	0	0
John Peel	16	209	13.1	1	26		Lei Talamaiavao	20	0	5	2	0
Eddie Wide	17	154	9.1	1	45		JJ Williams	20	0	0	1	0
Shaky Smithson	13	100	7.7	0	24		Kenape Eliapo	16	0	2.5	0	0
Luke Matthews	9	108	12.0	0	34		Chaz Walker	12	0	0	0	0
Matt Asiata	9	88	9.8	0	24		PUNT RETURNS	NO	YDS	AVG	TD	
Kendrick Moeai	4	77	19.2	2	34		Luke Matthews	17	172	10.1	0	
PUNTING	NO	YDS	AVG	FC	NET	BLK	Shaky Smithson	13	123	9.5	0	
Sean Sellwood	69	2958	42.9	30	37.0	2	KICK RETURNS	NO	YDS	AVG	TD	
KICKING	XP	1-29	30-39	40-49	50+	TOTAL LONG	Shaky Smithson	22	543	24.7	0	
Joe Phillips	38-39	10-10	5-6	5-6	0-0	20-22	48	DeVonte Christopher	14	338	24.1	



YR	BOWL/TM RANK	LINE	OPPONENT	SCORE	LAST 5 BOWL GAMES
05	Emerald	+9	Georgia Tech - #24	38-10	
06	Armed Forces	-1'	Tulsa	25-13	
07	Poinsettia	-8	Navy	35-32	
08	Sugar - #7	+9	Alabama - #4	31-17	
09	Poinsettia - #23	+3	California	37-27	Utah's All-Time Bowl Record 12-3

OFFENSE - LAST 7 YEARS - DEFENSE

RET	OFF	TOTAL	OFF	YPC	OFF	PASS	YPP	SKS	TOTAL	RET	DEF	TOTAL	DEF	YPC	DEF	PASS	YPP	SKS	BY
STS	PTS	OFF	RUSH	YPC	PASS	PASS	YPP	VS	TURN	STS	PTS	DEF	RUSH	YPC	PASS	PASS	YPP	BY	
4	29.8	390	160	4.3	229	60.5	13.1	20	+5	2009	7	20.2	314	138	3.7	176	50.6	15.5	30
7*	36.9	401	156	4.1	244	67.4	10.9	25	+13	2008	6	17.2	289	99	3.1	190	55.0	16.8	29
9*	26.2	369	167	4.0	202	61.8	14.1	28	+11	2007	6	16.8	329	146	3.9	183	50.4	19.5	37
5	27.9	368	140	4.0	228	57.9	13.2	15	+8	2006	7	19.8	322	106	3.1	216	60.4	16.2	25
5	30.0	474	179	4.3	295	62.2	15.8	29	-1	2005	4	24.1	373	151	4.0	222	54.3	15.5	29
7*	45.3	500	236	5.4	264	67.4	11.0	20	+15	2004	7	19.5	343	140	3.8	203	52.7	17.6	33
5*	28.7	375	161	3.6	214	61.9	13.1	16	+9	2003	5	19.1	339	140	3.8	199	49.3	17.7	22

Get updated 2010 stats weekly on philsteele.com

OFFENSE - 2009 STATS BY GAME - DEFENSE

Att	Foe	Total FD	Rush Yds	Avg	Pass Att	Yds	Sks vs	Total FD	Rush Yds	Avg	Pass Att	Yds	Sks vs	TO	Diff	Gm Grade
45,333	Utah St	519	27	50-233	4.7	20-30	286	1	342	13	34-221	6.5	10-26	121	2	-2 177 77.8
23,684	at San Jose St	499	23	40-251	6.3	18-32	248	1	264	18	22-22	1.0	21-34	94	1	-1 235 68.8
58,017	at Oregon	297	15	33-119	3.6	20-42	178	1	312	15	51-217	4.3	4-16	95	1	+2 155 86.4
45,588	Louisville	416	19	42-214	5.1	17-22	202	3	261	18	35-80	2.3	15-33	181	4	+2 155 76.5
30,499	at Colorado St	457	22	40-209	5.2	24-32	248	1	334	17	31-150	4.8	12-24	184	2	+1 123 75.6
26,315	at UNLV	327	14	31-153	4.9	17-24	174	1	327	23	33-91	2.8	25-47	236	3	0 0 70.7
45,129	Air Force	267	8	30-100	3.3	11-21	167	3	318	20	75-254	3.4	7-10	64	0	-1 -51 73.4
44,837	Wyoming	363	19	38-152	4.0	20-28	211	2	202	12	25-51	2.0	20-31	151	5	+1 161 74.3
45,051	New Mexico	557	28	47-251	5.3	19-31	306	0	334	15	29-82	2.8	21-42	252	2	0 223 85.8
50,307	at TCU	284	11	27-65	2.4	16-32	219	2	549	32	51-342	6.7	17-29	207	0	0 -265 69.0
44,991	San Diego St	391	22	42-189	4.5	15-29	202	0	262	16	29-55	1.9	17-37	207	2	+2 129 79.8
64,301	at BYU	298	17	30-97	3.2	22-45	201	2	265	14	36-131	3.6	12-32	134	4	-1 33 86.6
32,665	† California	389	20	35-51	1.5	26-37	338	3	310	17	28-96	3.4	20-36	214	4	-2 79 85.0
TOTALS		5064	245	485-2084	4.3	245-405	2980	20	4080	230	479-1792	3.7	201-397	2288	30	+5 984 77.7
AVERAGES		390	18.8	37-160	4.3	60.5%	229	4.9%	314	17.7	37-138	3.7	50.6%	176	7.6%	0.4 76 435
HOME		419	20.5	42-190	4.6	63.4%	229	5.6%	287	15.7	38-124	3.3	50.3%	163	8.4%	+2 132 77.9
AWAY		364	17.4	34-135	4.0	58.6%	229	4.5%	337	19.4	36-150	4.2	50.9%	187	6.9%	+3 27 77.4

2005 RESULTS				2006 RESULTS				2007 RESULTS				2008 RESULTS				2009 RESULTS					
UTAH Pre-Season Rank	Opponent	Line	Post-Season Score	UTAH Pre-Season Rank	Opponent	Line	Post-Season Score	UTAH Pre-Season Rank	Opponent	Line	Post-Season Score	UTAH Pre-Season Rank	Opponent	Line	Post-Season Score	UTAH Pre-Season Rank	Opponent	Line	Post-Season Score		
	Arizona	-7'	27-24		at UCLA	+3	10-31		at Michigan	+6'	7-24		at Michigan	+3	25-23		#19	Utah St	-21	35-17	
	Utah St	-24'	31-7		at Northern Arizona	NL	45-7		Air Force	-7	12-20		#22	UNLV	-21'	42-21		#17	at San Jose St	-13'	24-14
	at TCU	-3'	20-23	OT	at Utah St	-20'	48-0		UCLA - #11	+16	44-6		#22	at Utah St	-24'	58-10		#18	at Oregon	-5	24-31
	Air Force	-7	38-35		at San Diego St	-8'	38-7		at UNLV	-7'	0-27		#20	at Air Force	-9	30-23		-	Louisville	-14	30-14
	at North Carolina	+4	17-31		Boise St - #22	-5	3-36		Utah St	-21'	34-18		#17	Weber St	-40	37-21		-	at Colorado St	-8'	24-17
	at Colorado St	+4'	17-21		TCU	-2'	20-7		at Louisville	+14	44-35		#15	Oregon St	-11'	31-28		#24	at UNLV	-16'	35-15
	San Diego St	-10	19-28		at Wyoming	-3	15-31		San Diego St	-14	23-7		#14	at Wyoming	-23'	40-7		#19	Air Force	-9	23-16
	UNLV	-11'	42-32		at New Mexico	-6	31-34		at TCU	+3'	27-20		#14	Colorado St	-21	49-16		#19	Wyoming	-17	22-10
	Wyoming	-2'	43-13		UNLV	-22	45-23		at Colorado St	-5'	27-3		#10	at New Mexico	-7	13-10		#17	New Mexico	-27'	45-14
	New Mexico	-6	27-31		Colorado St	-11'	35-22		Wyoming	-13'	50-0		#10	TCU - #4	+1'	13-10		#16	at TCU - #4	+20	28-55
	at BYU	+10	41-34	OT	at Air Force	-1	17-14		New Mexico	-15	28-10		#8	at San Diego St	-30	63-14		#23	San Diego St	-20	38-7
UTAH WAS NOT RANKED 1-4 PREVIOUSLY RANKED IN 2004					RYU - #21	+10'	31-33		at BYU - #23	+4'	10-17		#8	BYU - #16	-7	48-24		#22	at BYU - #18	+7'	23-26