

UNI PANTHERS

Cedar Falls, Iowa
Enrollment: 13,080Mark Farley (Career 89-39)
11th Year at Northern Iowa
Farley's record at Northern Iowa 89-39

POSITION OUTLOOK FOR 2011

QB's - In '09 UNI ret'd 2nd tm MVFC Pat Grace (2041, 62%, 14-7, 618 rush) and Zach Davis (L/3 st, 504, 61%, 3-1). Grace earned 1st tm MVFC throwing for 2,280 (61%, 20-8, 297 rush) while Davis threw for 230 (49%, 2-2). Grace departed LY but Davis ret'd and they added PS#122JC Tirrell Rennie who led the nation 2Y in a row in tfl off at the JC level. They rotated QB's for the 1st 4 until Davis threw 2 int in the 1H vs SIU. Rennie was named the MVFC Newcomer of the Yr (2nd tm MVFC, 12 st) after throwing for 1,526 (56.0%, 8-11) and rushing for 1,291 (5.6) with 15 td in the triple option. Davis threw for 464 (52.9%, 3-5) but departs. Rennie is locked in as st'r after becoming the 1st 1,000 yd rushing QB ever at UNI. He is the only exp QB on the roster (5 underclassmen incl PS#190 Jared Lanpher behind him) and if he stays healthy, should put up even better numbers his Sr yr.

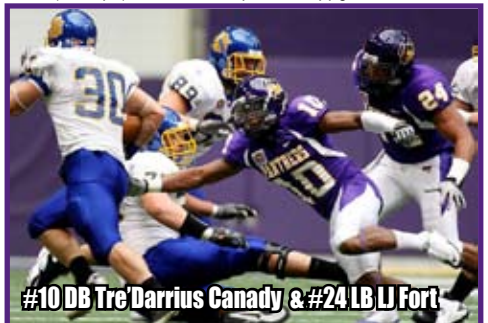
RB's - UNI ret'd 7 of their top 8 rushers in '09 incl Derrick Law (786, 4.2) and 2nd tm MVFC FB Ryan Mahaffey but lost a 1,000 yd rusher. Law (susp opener) only started the L/3 but still led with 714 (5.8) but left LY. RfR Carlos Anderson started the L/8 and was #2 with 541 (4.7) while Matt Strathman added 264 (6.8) and both ret'd LY along with 2nd tm MVFC FB Mahaffey (7 rec) but he moved to TE. While QB Rennie led the tm in rushing, Anderson was the top RB with 974 (5.7). They ret 6 of the top 7 and this could be the year UNI has two 1,000 yd rushers in the same season for the 1st time in school history.

Rec's - In '09 UNI lost 4 of its top 5 rec, but despite being inexp'd avg'd 53 ypg more. LY they lost their top 2 rec but got back '08's top rec DJ Collins (inj'd '09) and ret'd their #3 Jarred Herring (516, 19.1) along with 2nd tm MVFC TE Schuyler Oordt (358, 19.9) and moved in FB Mahaffey. With a running QB they avg'd 88 ypg less. TY they lose 2 of their top 3 rec in TE Oordt (405, 16.9) and Maurice Turner (1 st, 289, 17.0) along with TE Mahaffey (12 st, 25, 8.3). Collins was lost after 9 gm (inj) but was still #4 with 254 (14.1). He returns along with #1 Herring (549, 17.7), Montari Leonard (182, 12.1) and Terrell Sinkfield (11 st, 134, 26.8).

O-Line - The OL lost just 1 st'r in '09 and improved their ypc from 4.4 to 4.9 while all'g just 10 sks (3.4%). LY they lost all 5 st's incl 2 AA's in C Austin Steichen and LT Austin Howard. With a mobile QB the rush ypg jumped to 217 (#9 FCS) but they only improved their ypc to 5.0 and allowed 34 sks (14.2%). This year they lose C Austin Zlab (12st) but ret 6 who had starts last year and should be one of the best lines in the MVFC.

D-Line - In '09 the DL lost a comb'd 30 sts incl a 1st tm and a 2nd tm MVFC DL. They ret'd the MVFC DPOY James Ruffin (10 sk) and added BG tran Darren Branch. For a 3rd str ssn UNI was #1 MVFC in rush D (#9 FCS) all'g just 96 ypg (2.9) but the D's sk total fell to 27. LY they lost 3 st's in MVFC co-DPOY Ruffin (#7 tkl'r, 10.5 sk), 2nd tm MVFC DT Wes Lane (16 tfl) and NG Chuck Kinney (#5, 6.5 tfl). While their numbers slipped a little to 104 ypg (3.1) they again led in rush D (#10 FCS) and the D had 37 sk. TY they only lose a DE Henry Obi (3 st, 18 tkl, 4.5 sk) and ret the rest of the 2 deep incl 1st tm MVFC DT Ben Boothby who was #2 in the conf with 9.5 sk.

LB's - In '09, this unit lost the #3 tkl'r then the #2 tkl'r, Jamar Thompson, started 8 at FS. They did get back the #1 tkl'r (1st tm MVFC) and the ppg improved from 17.7 to 13.2. LY they lost the #1 (1st tm MVFC) and #4 tkl'rs. They ret'd LJ Fort (#3 tkl'r) and Thompson (#2) moved back from FS. They started a 3-4 D in 8 gms in '10 but allowed their most ppg in 4 yrs. TY they lose 1st tm MVFC LB Thompson (#1 tkl'r) but ret 4 of their top 5 incl 2nd tm MVFC Fort (#2 tkl'r, 3 int), James Conley (#4, 12 tfl), Jordan Smith (#5, 8 pd) and should improve the ppg.



#10 DB Tre'Darrius Canady & #24 LB LJ Fort

DB's - In '09 the secondary lost 6, who comb for all 60 sts incl a 1st tm MVFC SS and a 2nd tm MVFC CB. They moved LB Thompson to FS and improved their pass def by 31 ypg finishing #3 MVFC in pass eff D (9-12 ratio). LY they lost SS Quentin Scott (#6 tkl'r, 5 int) and Thompson moved back to LB full-time. With 2 ret st's, they fell to #5 in pass eff D (17-15 ratio). They lose CB Craig James (1 st, #12 tkl'r) and Terrell McBride (23 tkl) but ret 6 with starting exp and HC Farley called this the MIP group in the spring.

2011 SCHEDULE

9/3	at Iowa St
9/10	at Stephen F. Austin
9/17	
9/24	Western Illinois
10/1	at Missouri St
10/8	Indiana St (HC)
10/15	at South Dakota St
10/22	Southern Illinois
10/29	at North Dakota St
11/5	Youngstown St
11/12	Southern Utah
11/19	at Illinois St

2010 RECORD:
(7-5)

RETURNING STARTERS:

OFFENSE: 8*

DEFENSE: 10

LETTERMEN:

Returning: 40 (17, 20, 3)

Lost: 15 (9.5, 1)

2010 AVG ATTENDANCE:

12,997 (#24)

MVFC

SPECIAL TEAMS - LY this unit ret'd all of their top ST players incl K Billy Hallgren (13-17, L/42) and P Kyle Bernard (36.8). Hallgren hit 15-25 (L/44) and earned 1st tm MVFC. Bernard improved his avg to 44.4 and had a UNI-Dome rec'd 75 yd'r vs N Dakota St. 1st tm MVFC RM Carlos Anderson avg'd 27.2 on KR with 2 td, but the PR unit only avg'd 6.1 (1 td). TY they lose their career FG leader Hallgren but everyone else ret's.

COACHES - HC Mark Farley has led UNI to 6 conf championships, 6 playoff appearances and five top 5 finishes in his 10 yrs. Co-OC's Bill Salmon and Mario Verduzzo ret for their 11th yr. Jovan Dewitt is the new DC after 2 yrs here as the LB cch.

FORECAST - In 2010 UNI lost all 5 OL st's, the top QB, RB and top 2 rec. They had an unusually high 16.3 ypg (see FBS mag) and the scoring and tfl off dropped but the rush ypg improved behind the 1st 1,000 yd rushing QB in UNI history. LY they ret'd 6 st's on D but lost all 4 All-MVFC players incl 2x DPOY Ruffin. The inexp'd group saw their numbers drop but TY they ret 10 st's and 13 of their top 16 tkl'rs. After a school rec'd 11 sk performance in the opener vs NDSU, UNI dropped the next 2 (-8 TO) before rebounding to go 6-1 and the Panthers had the MVFC bid locked up when they lost to WIU in the reg ssn finale. In the 1st round of the playoffs, they were upset at home by Lehigh to finish 7-5. With 18 ret st's, the Panthers again look like the team to beat in the MVFC but do lack depth at some spots, especially at QB, which could be an issue when running a triple option off.

STADIUM: UNI-DOME (16,324) (#43)

PLAYING SURFACE: MONDO-TURF

	2002	2003	2004	2005	2006	2007	2008	2009	2010	9 Yr Total
Straight Up	5-6	10-3	7-4	11-4	7-4	12-1	12-3	7-4	7-5	78-34
Home	3-3	6-0	4-2	7-0	4-2	6-1	8-1	5-1	4-2	47-12
Away	2-3	4-3	3-2	4-4	3-2	6-0	4-2	2-3	3-3	31-22
Playoffs	-	1-1	-	3-1	-	1-1	2-1	-	0-1	7-5
Conf	2-5	6-1	5-2	5-2	5-2	6-0	7-1	5-3	6-2	47-18
Non-Conf	3-1	4-2	2-2	6-2	2-2	6-1	5-2	2-1	1-3	31-16

2010 STATISTICAL LEADERS

RUSHING	ATT	GAIN	LOST	NET	TD	AVG	PLAYER	TKL	SKS	TFL	PBU	INT
Tirrell Rennie	232	1490	199	1291	15	5.6	Jamar Thompson	99	1.5	3	4	1
Carlos Anderson	172	1012	38	974	2	5.7	LJ Fort	92	3	8.5	2	3
Matt Strathman	75	304	10	294	1	3.9	Andre Martin	77	0	1.5	5	5
Zach Cutkomp	10	28	6	22	0	2.2	James Conley	69	6	6	5	1
Montari Leonard	2	19	0	19	0	9.5	Jordan Smith	67	0	4.5	7	1
Jarred Herring	5	25	7	18	1	3.6	Ben Boothby	56	9.5	6.5	0	1
Terrell Sinkfield	2	9	0	9	0	4.5	Tre'Darrius Canady	49	0	0.5	1	0
PASSING	ATT	COMP	PCT	YDS	TD	INT	Garrett Scott	46	0	1	1	1
Tirrell Rennie	168	94	56.0	1526	8	11	Darren Branch	37	2.5	3	3	0
Zach Davis	70	37	52.9	464	3	5	JJ Swain	37	1	1	2	0
RECEIVING	REC	YDS	AVG	TD	LONG	Will Eilert	36	6	3	1	0	
Jarred Herring	31	549	17.7	5	83	Craig James	28	0	0	3	2	
Schuyler Oordt	24	405	16.9	3	49	Shawn Gerard	27	1	0.5	0	0	
Maurice Turner	17	289	17.0	1	42	Terrell McBride	23	0	1	0	0	
Josh Collins	18	254	14.1	1	45	Jordan Gacke	22	0	2.5	0	0	
Montari Leonard	15	182	12.1	1	34	Varmah Sonie	20	0	1	4	1	
Terrell Sinkfield	5	134	26.8	0	47	Henry Obi	18	4.5	2.5	1	0	
Carlos Anderson	15	122	8.1	0	29	August Hadenfeldt	9	2	0	2	0	
Matt Strathman	3	30	10.0	0	17	Jaz Granderson	6	0	0	0	0	
Ryan Mahaffey	3	25	8.3	0	10	PUNT RETURNS	NO	YDS	AVG	TD		
PUNTING	NO	YDS	AVG	FC	NET	BLK	In20	Jarred Herring	9	64	7.1	0
Kyle Bernard	35	1484	42.4	0	33.3(t)	0	7	Carlos Anderson	3	34	11.3	0
Shawn Krusey	13	561	43.2	1	-	0	4	KICK RETURNS	NO	YDS	AVG	TD
KICKING	XP	1-29	30-39	40-49	50+	TOTAL	LONG	Carlos Anderson	25	680	27.2	2
Billy Hallgren	33-33	5-6	7-12	3-6	0-1	15-25	44	Jarred Herring	11	250	22.7	0

OFFENSE - LAST 7 YEARS - DEFENSE

RET STS	OFF PTS	TOTAL OFF	OFF RUSH	OFF YPC	OFF PASS	PASS %	OFF YPP	SKS VS	TOTAL TURN		RET STS	DEF PTS	TOTAL DEF	DEF RUSH	DEF YPC	DEF PASS	PASS %	DEF YPP	SKS VS
3	23.5	382	217	5.0	166	54.8	16.3	34	-2	2010	6	21.1	346	104	3.1	241	59.1	16.4	37
6*	33.4	417	189	4.9	228	58.6	12.5	10	+2	2009	4	13.2	267	96	2.9	172	61.4	20.3	27
6	29.2	367	192	4.4	175	61.6	12.6	12	+22	2008	6	17.7	310	107	3.2	203	57.7	17.5	33
7*	36.1	457	227	4.8	230	75.5	12.7	23	+15	2007	9	16.8	304	91	3.3	213	60.8	18.1	28
6	31.0	408	219	5.4	189	67.5	13.2	21	+7	2006	4	22.6	342	138	4.0	204	58.2	15.1	20
7	29.9	401	164	3.8	237	67.6	13.4	38	+5	2005	6	23.8	376	127	3.4	248	61.5	15.8	42
8	31.9	390	204	4.3	186	59.5	12.2	11	+11	2004	5	18.0	305	109	3.3	196	54.9	16.9	21

OFFENSE

2010 STATS BY GAME

DEFENSE

UNI 2010	ATT	OPPONENT	FD	Rush-YDS	AVG	CO-ATT	YDS	SVS	FD	Rush-YDS	AVG	CO-ATT	YDS	SVS	TURN
14,422		North Dakota St	16	35-262	7.5	10-20	172	3	16	31-(-40)	-1.3	20-35	247	11	0
12,260		SF Austin	21	33-214	6.5	14-27	260	5	25	29-79	2.7	37-55	356	2	-3
48,874		at Iowa St	17	43-146	3.4	12-23	174	3	15	35-117	3.3	12-24	93	4	-5
14,686		South Dakota St	22	50-276	5.5	12-19	114	1	19	22-155	7.0	22-38	230	0	+3
13,356		at S Illinois	21	46-325	7.1	9-23	138	2	18	38-85	2.2	21-28	329	3	-3
9,169		at South Dakota	23	48-147	3.1	20-28	287	3	14	27-82	3.0	13-27	189	2	0
15,730		Illinois St	18	40-192	4.8	8-14	90	2	16	37-77	2.1	17-29	245	3	+3
13,039		at Youngstown St	22	49-279	5.7	8-16	152	3	16	40-147	3.7	14-23	218	1	+1
6,038		at Indiana St	25	57-340	6.0	9-15	163	2	19	29-121	4.2	17-36	200	3	0
14,892		Missouri St	15	37-181	4.9	8-11	161	0	20	45-145	3.2	19-26	210	5	+1
8,217		at Western Illinois	14	32-49	1.5	13-27	216	6	23	49-216	4.4	17-24	311	0	+1
5,990		Lehigh	14	51-188	3.7	8-16	63	4	15	24-69	2.9	18-39	267	3	0
TOTALS			228	521-2599	5.0	131-239	1990	34	216	406-1253	3.1	227-384	2895	37	-2
AVERAGES			19.0	43-217	5.0	11-20	166	2.8	18	34-104	3.1	19-32	241	3.1	-0.2

2005 RESULTS

OPPONENT	SCORE
Drake	52-17
Minnesota-Duluth	49-14
at Iowa	21-45
at Western Illinois	41-24
at Missouri St	21-24
at Indiana St	31-10
at Illinois St	3-38
Youngstown St	21-7
at WKU (2OT)	23-20
Southern Illinois	25-24
Northern Arizona	41-17
Eastern Washington	41-38
at New Hampshire	24-21
at Texas St (OT)	40-37
at Appalachian St	16-21

2006 RESULTS

OPPONENT	SCORE
at Drake	48-7
North Dakota	31-35
South Dakota St	27-17
at Iowa St	27-28
Missouri St	38-7
at Indiana St	34-14
at Youngstown St	31-23
Western Illinois	13-24
WKU	31-20
at Southern Illinois	23-47
Illinois St	38-27

2007 RESULTS

OPPONENT	SCORE
Minnesota St Mankato	41-14
at Iowa St	24-13
at South Dakota St	31-17
at Drake	45-7
at Illinois St	23-13
Southern Illinois	30-24
at Western Illinois	42-3
Youngstown St	14-13
at Missouri St	38-17
Indiana St	68-14
Southern Utah	48-10
New Hampshire	38-35
Delaware	27-39

2008 RESULTS

OPPONENT	SCORE
at BYU	17-41
South Dakota	24-13
South Dakota St	34-20
at Southern Illinois	24-27
Nicholls St	34-14
Illinois St	31-17
North Dakota St	23-13
at Youngstown St	21-20
at Western Illinois	30-6
Missouri St	42-0
at Indiana St	28-0
at Southern Utah	34-24
Maine	40-15
New Hampshire	36-34
Richmond	20-21

2009 RESULTS

OPPONENT	SCORE
at Iowa	16-17
South Dakota	66-7
St Francis (PA)	30-0
at Missouri St	35-7
Indiana St	62-