

JAMES MADISON DUKES

Harrisonburg, Virginia
Enrollment: 19,000

Mickey Matthews (Career 88-56)
13th Year at James Madison
Matthews' record at James Madison 88-56

POSITION OUTLOOK FOR 2011

QB's - In '09, JMU had to replace CAA OPOY Rodney Landers, an AA who left as the school's career QB rushing leader. His bkp QB Drew Dudzik ret'd after throwing for 110 (53%, 1-1, 199 rush). Dudzik split time (3st in 1st 5) with Justin Thorpe but Dudzik was in'd (OFY) vs UR. In 5 gms he threw for 472 (56%, 6-2) and rushed for 158 (4.4). CAA OROY Thorpe threw for 1,260 (57%, 6-9) and was the top rusher with 654 (4.4, 5 td). Both ret'd LY and Dudzik was the st'r after spg but threw for just 1,282 (54.7%, 5-9) with 345 rush (3.5, 5 td). Thorpe only ply'd in the opener (31 rush yd, 0-1 pass). WR Dae'Quan Scott was the Wildcat QB (207 rush, 4.3) and took the 1st snaps at QB in the finale (Dudzik in on 1st series). TY they lose Dudzik but add K-St tran Billy Cosh (PS#45) who was IFS. Jr Thorpe is the most exp of the group, but I expect rFr Cosh to win the job and put up much improved numbers.

RB's - In '09 JMU ret'd 4 of its top 6 but lost two 1,000 yd rushers. Griff Yancey, who was #3 (518, 5.6), began the ssn at FS (3st) before moving back to RB (2 st, 149, 3.2). Jamal Sullivan was the top RB with just 451 (3.6), while Corwin Acker had 309 (outstanding 8.1). LY the only loss was Acker and they added HT true Fr Dejour Simmons (PS#87) but he RS. Yancey had just 70 (3.7) but 121 rec, while 2nd tm CAA Sullivan led with 716 (4.2) and Scott Noble was #2 (380, 4.6) with 134 rec. All 3 depart and the top ret TB is Jordan Anderson (78, 4.9) but Simmons should make an impact TY.

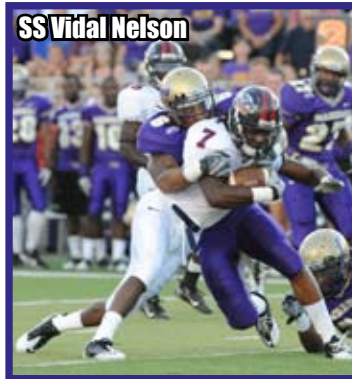
Rec's - LY JMU lost 4 of its top 5 rec incl Rockeed McCarter (#1, 597, 20.6) and TE Mike Caussin (#2). Their top returnees were TB Scott Noble (235, 14.7) and WR Marcus Turner (78, 7.8). Turner (2st) had just 28 (9.3) in 10 gms and departs. They ret 5 of their top 7 incl their top 2 in Kerby Long (283, 17.7) and Dae'Quan Scott (206, 12.9) and is on par with LY's unit.

O-Line - JMU had a 5 yr stretch where they avg'd over 200 ypg rush incl '08 when they ret'd 4 st's and finished #1 CAA (#4 FCS) avg 283 ypg (5.7). In '09 they lost 3 st's incl an AA C and 2nd tm CAA OT. They did ret 2nd tm CAA Dorian Brooks but slumped to 180 ypg (4.1) while all'g 18 sk (most S/O4). LY they lost 2 st's incl 1st tm CAA OG Brooks and had their worst numbers S/O3 avg just 174 ypg (4.0) with 15 sk (8.1%). TY they lose 2nd tm CAA LT Theo Sherman but ret four 11 gm st's led by 2nd tm CAA C Roane Babington. RG Scott Jones had surg in spg and is exp to miss the 1st few gms of '11, but this more exp'd group should help the numbers improve.

D-Line - In '09 the DL ret'd 2 st's in DT Sam Daniels (42 tkl, 12 tfl) and DE Arthur Moats (#3 tkl'r), who led with 15.5 tfl (11.5 sk). They lost 2nd tm CAA Abdul-Wahid and DT JD Skolnitsky (10.5 tfl). While their rush D improved slightly, the D's sk tfl dropped from 34 to 27. LY they lost 2nd tm CAA DT Daniels (#3 tkl'r, 12.5 tfl) and 1st tm CAA DE Moats (#1 tkl'r, #6DC), who led the CAA in tfl (23.5) and was #2 in sk (11). They ret'd 5 DL who comb for 21 sts along with Army trans Nick Emmons but he was lost after 2 st. While they trimmed the ypg again, the sk tfl dropped to 15. TY they lose 1st tm CAA DT Ronnell Brown (8st) who HC Matthews called "a big part of our def," but ret 7 who comb for 34 sts.

LB's - The LB unit ret'd 2 st's in '09 incl Vidal Nelson but he moved to SS. The inexp group surprisingly all'd just 18.9 ppg. LY they ret'd their top 3 LB's who were the #2, #6 and #9 tkl'rs. They all'd just 14.7 ppg their fewest since 1978 (12.4). TY they again ret their top 3 in #1 tkl'r Pat Williams (11 tfl), CAA DROY LB Stephon Robertson (#2, 9.5 tfl) and Chase Williams.

DB's - In '09 the secondary lost 4 st's incl an AA FS and a 1st tm CAA CB. They ret'd CAA DROY SS Pat Williams (#4 tkl'r) but he moved to LB. They still ret'd 2 DB that comb for 10 st plus moved in LB Nelson and RB Yancey. They led the CAA in pass D and



had a 12-12 ratio. LY they lost 3 DB's incl 2nd tm CAA CB Scotty McGee (#7 tkl'r, 12 pbu, #6DC JAX) and Yancey (3st) moved back to TB at midseason. They ret'd 4 with 6+ sts led by WS Jonathan Williams (#4 tkl'r, 2 int) and SS Nelson (#5 tkl'r). LY and the #s fell again. The D had to replace 5 of its top 8 tkl'rs in '09 and had a new DC. They improved slightly in scoring and remained #2 in tfl D. LY they ret'd 9 of their top 12 tkl'rs but lost 2 a 9-9 ratio. TY NFL DC's JMU started '10 off with 3 str wins incl an upset of VT. They lost to UD and just got by Towson but then lost 4 str. They rallied to win the L/2, incl an upset of #2 W&M, to finish 6-5. The Dukes look to ret 17 st's their most S/O4 and will again be solid on D and if their off improves will be in the CAA title hunt.

2011 SCHEDULE

9/3	at North Carolina
9/10	Central Conn St
9/17	at Liberty
9/24	at William & Mary
10/1	Richmond (NC)
10/8	Maine
10/15	Villanova
10/22	
10/29	at Old Dominion
11/5	at New Hampshire
11/12	Rhode Island
11/19	at UMass



2010 RECORD:
(6-5)

RETURNING STARTERS:
OFFENSE: 8
DEFENSE: 9
LETTERMAN:
Returning: 40 (16,21,3)
Lost: 15 (6,6,3)
2010 AVG ATTENDANCE:
16,597 (#11)
CAA

SPECIAL TEAMS - The ST lost its top P along with its AA K in '09. They ret'd AA Scotty McGee who avg'd 29.1 (1 td) on KR and 12.9 (3 td) on PR and was the CAA ST POY. LY McGee departed (1st tm CAA PR & KR) but they ret'd P Matt Goff (37.8) and K Dixon Wright (10-13, L/45). Wright split duties with Ben Hopewell (both just 3-5 FG) while Goff (4 punts) was replaced by David Skahn. Wright, Hopewell and Goff all depart but they do ret their top PR, KR and Skahn (39.2).

COACHES - HC Mickey Matthews, who is entering his 13th yr, is JMU's winningest HC and has led them to 7 str winning ssns. They also ret 8th yr OC Jeff Durden and 3rd yr DC Kyle Gillenwater who enters his 13th ssn here overall.

FORECAST - In '08 JMU seemed destined for a return to the Champ gm as they won 12 str but fell to Montana in the semi's due to 4 TO's and the loss of QB Landers. The off ret'd 6 st's in '09 but lost the CAA OPOY and its top RB and the #s dropped significantly. They ret'd 2 exp QB's plus their top RB but did lose 4 of top 5 rec LY and the #s fell again. The D had to replace 5 of its top 8 tkl'rs in '09 and had a new DC. They improved slightly in scoring and remained #2 in tfl D. LY they ret'd 9 of their top 12 tkl'rs but lost 2 a 9-9 ratio. TY NFL DC's JMU started '10 off with 3 str wins incl an upset of VT. They lost to UD and just got by Towson but then lost 4 str. They rallied to win the L/2, incl an upset of #2 W&M, to finish 6-5. The Dukes look to ret 17 st's their most S/O4 and will again be solid on D and if their off improves will be in the CAA title hunt.

STADIUM: BRIDGEFORTH STADIUM (15,694) (#50) PLAYING SURFACE: ARTIFICIAL (FieldTurf)

	2002	2003	2004	2005	2006	2007	2008	2009	2010	9Yr Total
Straight Up	5-7	6-6	13-2	7-4	9-3	8-4	12-2	6-5	6-5	72-38
Home	3-4	5-1	5-1	5-1	5-0	5-1	8-1	3-2	3-3	42-14
Away	2-3	1-5	8-1	2-3	4-3	3-3	4-1	3-3	3-2	30-24
Playoffs	-	-	4-0	-	0-1	0-1	2-1	-	-	6-3
Conf	4-6	4-5	8-1	5-3	7-1	6-2	9-0	4-4	3-5	50-27
Non-Conf	1-1	2-1	5-1	2-1	2-2	2-2	3-2	2-1	3-0	22-11

2010 STATISTICAL LEADERS

RUSHING	ATT	GAIN	LOST	NET	TD	AVG	PLAYER	TKL	SKS	TFL	PBU	INT
Jamal Sullivan	169	747	31	716	5	4.2	Pat Williams	101	1	10	1	0
Scott Noble	82	392	12	380	3	4.6	Stephon Robertson	90	1	8.5	3	0
Drew Dudzik	100	461	116	345	5	3.5	Vidal Nelson	70	1	5.5	5	0
Dae'Quan Scott	48	257	50	207	4	4.3	Jakarie Jackson	65	0	0	3	2
Kerby Long	10	79	0	79	0	7.9	Jonathan Williams	61	0	3.5	9	2
Jordan Anderson	16	85	7	78	0	4.9	Taveion Cuffee	50	0	0	4	3
Griff Yancey	19	77	7	70	0	3.7	Tyler Snow	41	1	1.5	1	0
PASSING	ATT	COMP	PCT	YDS	TD	INT	Leavander Jones	35	0	0	8	0
Drew Dudzik	181	99	54.7	1282	5	9	DJ Bryant	34	2.5	5.5	3	0
RECEIVING	REC	YDS	AVG	TD	LONG		Chase Williams	28	0	1.5	1	0
Kerby Long	16	283	17.7	2	47		Ronnell Brown	28	1.5	2	0	0
Dae'Quan Scott	16	206	12.9	1	44		Peter Rose	27	1	0	0	0
Scott Noble	16	134	8.4	0	42		Lamar Middleton	25	2.5	2	0	0
Quintin Hunter	7	132	18.9	0	41		Aaron Harper	24	1.5	4	0	0
Griff Yancey	9	121	13.4	1	31		Mike Allen	18	0	0	3	1
Brian Barlow	11	114	10.4	0	24		Ryan Smith	16	0	0	0	1
Jonathan Sharp	9	105	11.7	0	28		Sean O'Neill	10	0	0	1	0
Jamal Sullivan	3	87	29.0	1	77		Jordan Staton	9	0	0	0	0
Kavon Seaton	7	71	10.1	0	18		PUNT RETURNS	NO	YDS	AVG	TD	
Renard Robinson	1	34	34.0	0	34		Dae'Quan Scott	6	79	13.2	0	
PUNTING	NO	YDS	AVG	FC	NET	BLK	Kerby Long	8	55	6.9	0	
David Skahn	48	1883	39.2	16	36.0(t)	0	KICK RETURNS	NO	YDS	AVG	TD	
KICKING	XP	1-29	30-39	40-49	50+	TOTAL LONG	Kerby Long	21	466	22.2	0	
Ben Hopewell	13-13	3-3	0-0	0-2	0-0	3-5	Jordan Anderson	12	259	21.6	0	
Dixon Wright	12-12	3-3	0-1	0-1	0-0	3-5	Jamal Sullivan	2	101	50.5	0	

OFFENSE - LAST 7 YEARS - DEFENSE

RET	TOTAL	OFF	OFF	PASS	PASS	OFF	SKS	TOTAL	RET	DEF	TOTAL	DEF	DEF	PASS	PASS	DEF	SKS		
STS	PTS	RUSH	YPC	PASS	VS	YPP	VS	TURN	STS	PTS	YPP	RUSH	YPC	YPP	YPP	BY			
6*	17.7	293	174	4.0	120	53.8	16.6	15	+2	2010	7	14.7	287	126	3.5	160	58.5	19.5	15
6	22.0	338	180	4.1	157	55.8	15.4	18	0	2009	5	18.9	286	130	3.5	156	56.2	15.1	27
8*	38.1	401	283	5.7	119	59.4	10.5	11	+5	2008	7	23.1	307	134	3.8	173	58.5	13.3	34
6	33.3	410	265	5.3	145	63.1	12.3	6	-6	2007	6	22.1	324	127	3.4	198	63.7	14.7	26
8	32.4	391	218	5.3	173	66.2	12.1	14	+3	2006	5	16.8	280	85	2.4	196	64.2	16.7	47
5	35.5	404	235	5.3	170	68.4	11.4	10	+5	2005	5	15.3	288	107	3.0	181	56.3	18.8	25
10	28.1	368	213	4.2	155	64.0	13.1	31	+7	2004	8	17.9	325	87	2.6	238	63.1	18.2	56

OFFENSE

JMU 2010	ATT	OPPONENT	FD	Rush-YDS	AVG	CO-ATT	YDS	SKS	VS
16,612	Morehead St	24	61	-294	4.8	8	-15	189	0
66,233	at Virginia Tech	14	41	-114	2.8	5	-8	121	2
16,385	Liberty	14	41	-205	5.0	6	-14	78	0
16,205	Delaware	12	33	-161	4.9	12	-20	122	0
9,049	at Towson	19	45	-181	4.0	12	-24	136	0
16,985	New Hampshire	11	38	-118	3.1	10	-23	157	4
9,217	at Villanova	16	32	-87	2.7	22	-33	213	4
16,664	UMass	19	42	-180	4.3	13	-25	179	1
8,700	at Richmond	12	52	-166	3.2	6	-15	57	2
16,733	Wm & Mary	15	48	-266	5.5	0	-1	0	2
3,880	at Maine	10	41	-140	3.4	6	-8	64	0
TOTALS	166	474	-1912	4.0	100	-186	1316	15	193
AVERAGES	15.1	43	-174	4.0	9	-17	120	1.4	17.5

2010 STATS BY GAME

FD	Rush-YDS	AVG	CO-ATT	YDS	SKS VS	FD	Rush-YDS	AVG	CO-ATT	YDS	SKS BY	TURN
24	61-294	4.8	8-15	189	0	6	30-67	2.2	12-24	85	2	+1
14	41-114	2.8	5-8	121	2	23	44-238	5.4	10-16	124	0	+3
14	41-205	5.0	6-14	78	0	16	32-61	1.9	21-32	203	0	0
12	33-161	4.9	12-20	122	0	16	40-70	1.8	14-22	136	2	0
19	45-181	4.0	12-24	136	0	15	35-167	4.8	8-25	92	1	-1
11	38-118	3.1	10-23	157	4	21	32-106	3.3	22-40	248	2	-2
16	32-87	2.7	22-33	213	4	21	47-209	4.4	13-19	159	1	0
19	42-180	4.3	13-25	179	1	16	36-139	3.9	15-19	163	1	0
12	52-166	3.2	6-15	57	2	17	33-85	2.6	16-30	187	2	+1
15	48-266	5.5	0-1	0	2	23	32-86	2.7	24-40	250	3	0
10	41-140	3.4	6-8	64	0	19	31-163	5.3	24-39	118	1	0
166	474-1912	4.0	100-186	1316	15	193	392-1391	3.5	179-306	1765	15	+2
15.1	43-174	4.0	9-17	120	1.4	17.5	36-120	3.5	16-28	160	1.4	0

2005 RESULTS

OPPONENT	SCORE
Lock Haven	56-0
at Coastal Carolina	27-31
Delaware St	65-7
at Hofstra	42-10
Maine	38-2
at UMass	7-10
at Delaware	28-34
Richmond	15-18
at William & Mary	30-29
Villanova	28-13
Towson	55-14

2006 RESULTS

OPPONENT	SCORE
Bloombsburg	14-3
at Appalachian St	10-21
Northeastern	52-14
at VMI	45-7
Rhode Island	35-23
at New Hampshire	42-23
William & Mary	31-17
at Richmond	27-10
Delaware	44-24
at Villanova	20-21
at Towson	38-3
at Youngstown St	31-35

2007 RESULTS

OPPONENT	SCORE
at North Carolina	14-37
New Hampshire	41-24
VMI	45-17
Coastal Carolina	45-10
Villanova	35-7
at Northeastern	21-14
at Rhode Island	44-27
Richmond	16-17
at Delaware	34-37
at William & Mary	55-34
Towson	23-12
at Appalachian St	27-28

2008 RESULTS

OPPONENT	SCORE
at Duke	7-31
NC Central	56-7
UMass	52-38
Appalachian St	35-32
at Maine	24-10
Hofstra	56-0
at Richmond	38-31
at Villanova	23-19
Delaware	41-7
William & Mary	48-24
at Towson	58-27
Wofford	38-35
Villanova	31-27
Montana	27-35

2009 RESULTS

	OPPONENT	SCORE
1	at Maryland (OT)	35-38
8	VMI	44-38
2	at Liberty	24-20
0	at Hofstra	17-12
0	Richmond	17-12
1	Villanova	0-2
9	at William & Mary	3-2
7	at Delaware	20-14
4	Maine	22-14
7	at UMass	17-12
5	Towson	43-38