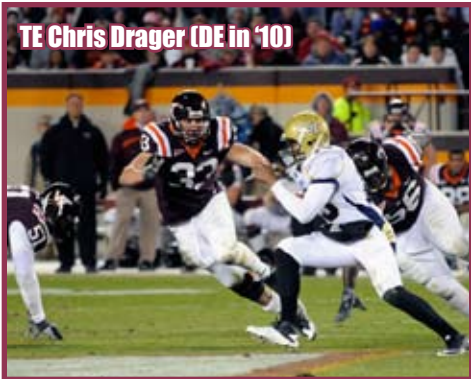


# VIRGINIA TECH HOKIES

**PhilSteele.com**  
• Football 24/7/365 •

**TE Chris Drager (DE in '10)**



## POSITION OUTLOOK FOR 2011

**QUARTERBACKS** - In '06 Sean Glennon (PS#21) started 13 and threw for 2,191 (56%, 11-11). In '07 VT signed Tyrod Taylor (PS#3) who drew many comparisons to Michael Vick. The two split time but Glennon took control by year's end and threw for 1,796 (61%, 12-5). Taylor threw for 927 (54%, 5-3, 429 rush). In '08 HC Frank Beamer made a surprising announcement that Taylor would RS. After losing the opener to EC, he reversed his decision. Taylor started 10 and threw for 1,036 (57%) but with a poor 2-7 ratio (738 rush, 5.0). Glennon (4 st) threw for 743 (60%, 3-5). Taylor was the clear-cut starter in '09 and showed obvious improvement (2311, 56%, 13-5, 370 rush) as 32% of his comp's were for 20+ yds (11% in '08). Without an exp'd bkp Taylor ran less. RFr Ju-Ju Clayton's (PS#185) first collegiate pass was an 80 yd td vs BC but that was his only completion on 5 att's (5 gm). Last year Logan Thomas (PS#3TE) battled Clayton in Aug but RS. Taylor had a fine senior season and tied the school record for 100 yd rush gms by a QB (Bob Schweickert 6, '62-'64). He was named ACC POY (27 of 57 votes) as he threw for 2,743 (59.7%, 24-5) and was the #2 rusher (659, 4.5). Thomas played in 7 (12-26-107). Taylor departs (#6DC BAL) as the career passing (7017) and total offense (9213) leader. Thomas is 6'6" 245 lb with a powerful arm and great mobility which sounds a little like Cam Newton. It did take Taylor a few years to hit his stride here so I look for a drop in their pass efficiency numbers.

**RUNNING BACKS** - In 2008 rFr Darren Evans (PS#16) set the ACC single season frosh rushing record with 1,265 (4.4). Evans tore his ACL in Aug '09 so the top returnee was soph Josh Oglesby (PS#75, 88, 2.3 '08) and he battled rFr Ryan Williams (PS#11) and true frosh David Wilson (PS#8). All 3 RB's were banged up in Aug. They opted to play true frosh Williams more in Wk 2 and he along with Williams, became the first VT duo ever to top 160 each in the same game. Williams did have a costly fumble vs NC (4Q) but after that he played with a vengeance and broke Evans' frosh record with 1,655 (5.6) and an ACC record 22 total td's (1st Fr to lead ACC in rush and scoring). LY RB coach Billy Hite called it the strongest backfield he's had in 32 yrs at VT. Wilson wanted to RS unless he got meaningful PT but the coaches opted to play him. They regretted that decision after 2 weeks but it turned out to be valuable as Williams was inj'd. Wilson finished #3 with 619 (5.5). Williams played in just 10 (5 st, 477, 4.3) and Evans led with 854 (5.7). Not in the PSL are James Hopper (5'9" 181 So, PS#217), Justin Ryals (5'4" 170 rFr), Greg Gaddell (5'10" 191 rFr) and Daniel Dyer (5'9" 201 rFr). With the early departure of both Evans and Williams (#2DC ARZ), this unit drops several notches as it would have been one on the nation's elite if they had returned.

**RECEIVERS** - In '08 VT had to replace THREE NFL DC's with their top returning WR having just 3 rec. The inexp showed as there were numerous games with key dropped passes. VT was one of just 2 teams left in the FBS that did not have a WR with a td catch when they finally got one in Wk11. True frosh Jarrett Boykin led with 441 (14.7) while rFr Danny Coale was #2 with 408 (11.3). In '09 the top 4 ret'd and Boykin improved to 835 (20.9) while Coale was #2 with 614 (20.5) and Dyrrell Roberts had 390 (17.7). Boykin led again LY with 847 (16.0) while Coale was #2 (732, 18.8) and Roberts was #3 (303, 14.4). The 6'4" Marcus Davis (PS#50) was #4 (239, 12.6). TY they lose TE Andre Smith (12 st, 195, 9.8) and Xavier Boyce is very questionable (off field incident). Not in the PSL are Mark Carter (6'0" 177 So), Willie Byrn (5'10" 176 rFr), Drew Turgyan (6'0" 209 rFr), Chris Caver (5'6" 171 rFr) and Corey Fuller (6'2" 188 Jr). They will likely use more two TE sets and moved in Chris Drager (PS#21, 11 st DE) who played TE as a rFr. They also add in VHT rFr Jerome Lewis (PS#14). This is a unit with 5,362 career yds and I look for Davis to have a breakout year.

**DEFENSIVE LINE** - In '06 VT had to replace 3 st'rs (all 1st or 2nd Tm ACC). They struggled with their lowest numbers since 1932 (107) with 113 ypg (3.2) while allowing 29 sks (9.0%). In '07 VT had to replace 2 st'rs and while they improved to 134 ypg (3.3), they allowed a mind-boggling 54 sks (14.2%). In '08 VT had to replace a #1 DC but moved up to 174 ypg (3.8) while still all'g the highest sk % in the FBS (14.5%). In '09 they had to replace 2 multiyear st'rs and improved to 208 ypg (4.7) with 31 sks (12.4%). LY they had to replace two 2nd Tm ACC OL's and put up similar numbers (199, 4.9, 34 sk, 9.9%). TY VT loses C Beau Warren (14 st, 2 yr st'r) but has 9 of their top 10 back and goes from 54 to 98 career sts ret'g. I'll call for them to have their lowest sk% since '03 and improve their rush numbers.

**DEFENSIVE LINE** - VT always has an exceptional run defense but in '09 with a veteran D-line (5 of top 6 back), they allowed 128 ypg rush and 3.6 ypc (worst S/'03). LY they had to replace 3 st'rs (#2DC) and a bkp (5 sts). With just 1 st'r back, the rush numbers got even weaker to 156 ypg (worst S/'92) and a remarkable 4.7 ypc, the worst in the Beamer era (4.6 in 1987). This year they lose 2nd Tm ACC DT John Graves (14 st, 37 tkl, 1.5 sk), 2nd Tm ACC DE Steven Friday (14 st, #4 tkl'r, 8.5 sk) and they also move DE Drager (11 sts, 34 tkl, 6 flt) to TE. Despite having just 1 st'r back (same as LY), I look for an improved rush D after an extremely poor 2010.

**LINEBACKERS** - In both '08 & '09 VT had to replace their #1 and #2 tkl'rs. In '10 they had to replace their #1 tkl'r (#7DC) again along with their #6 tkl'r. The lone ret st'r, Barquell Rivers (PS#42), missed the year with injury and Lyndell Gibson was the only ret LB who had over 17 tkl's in (53) '09. The inexp'd LB corps was part of the reason VT allowed 20.6 ppg (worst S/'03). This year they lose Gibson (13 st, #4 tkl'r) and Zach Luckett (4 tkl). They have 2 st'rs back (#1 & #8 tkl'rs) and also get Rivers back making them vastly more experienced.

**DEFENSIVE BACKS** - VT always has a solid pass D and in the last 7 years they have finished #11, #2, #13, #2, #25, #9 and #9 in my PDR. LY they had to replace 3 DB's (comb 32 sts) but I listed them as having 2 st'rs back as ROV Davon Morgan started the last 4 and had more tackles than the departed ROV. First time starting CB Jayron Hosley snagged 9 int's, which tied the school record set in 1967 by Ron Davidson. VT had an AA DB every year from 1999 to 2008 and after not having one in '09, Hosley was named 1st Tm AA by Walter Camp. This year the Hokies lose CB Rashad Carmichael (12 st, 40 tkl, 4 int, 7 pbu, #4DC HOU) and 2nd Tm ACC ROV Morgan (14 st, #2 tkl'r, 5 int). LY they had a comb'd 26 career sts ret to the unit and now have 40 incl their star and will once again finish near the top.

**SPECIAL TEAMS** - Beamer coaches this unit himself and VT almost always finishes near the top of my ST rankings (#1 in '07). In '08 they had to replace their K and top KR and it was shocking to me that VT finished a lowly #79. They gave up 3 PR td's for the first time in over 50 yrs and had 2 punts blk'd. VT did lose their 2 gunners unexpectedly. In '09 I called for them to be one of the most improved ST units in the country and VT did not disappoint (#13). For the 3rd straight yr they had a 1st time senior starter at K and Matt Waldron (PS#17) hit 20-23 (146). LY they had to replace both their K and P (#6DC, 37.6 net) but with Beamer as the head man, they improved to #6. Chris Hazley, a Sr walk-on, set a school record for consec FG's in a season with 21 after missing his first. New P Brian Saunders avg'd 44.0 (38.3 net) and Justin Myer had an outstanding 30 TB on 94 KO's (#4 FBS). David Wilson was a top-notch KR (26.5, 2 tkl) and Jayron Hosley led on PR's (12.6, 1 td). This year they lose their P and K but Beamer should fashion another fine unit.

**COACHES** - I think Frank Beamer is one of the most outstanding coaches in the NCAA. He was a DB at VT from '66-'68 and the Hokies were in just 6 bowls prior to his arrival ('87). Beamer had four losing seasons in his first six, including 2-8-1 in '92 but he's taken them to 18 bowls since '93 and has won the ACC Title 3 of the L4Y. OC Bryan Stinespring is entering his 19th year here (OC S/'02). Bud Foster has been with VT S/'87 and the DC since 1995. He was a Broyles Award finalist in '99, '01 and '05 and won the Award in '06 (only 4x finalist in award's history). Foster's defense was #1 in the FBS in '05 and '06, #4 in '07, #7 in '08, #12 in 09 but fell off LY (#52) due to injuries and inexperience.

## PHIL'S FORECAST

In 1999, the Hokies played in the National Title game and went 22-2 in a two year stretch. They are one of just 3 teams in the NCAA that have been to 18 straight bowls (Fla, Fla St). VT made the move to the ACC in 2004 and has been the dominant team in the league going 49-11 and playing in 4 of the 6 ACC Championship games, while winning ACC Titles in 2004 (no title game), '07, '08 and '10. They have finished in the AP Top 10 four of the last 7 years. Last year they opened with a National Title elimination game vs Boise St and came up short, then with a disappointed team had to play on a short week, in the rain, vs an FCS squad. Despite a 362-235 yd edge, they were stunned by James Madison 21-16. The season appeared lost, especially when they trailed EC 24-21 at the half the following week, but they rallied to win. VT then got their first shutout since '06 downing BC 19-0 in their ACC opener. The following week they had their biggest rally ever under Beamer trailing 17-0 in the 2Q, before getting 2 late scores for a 41-30 win at NCSt. After wiping out their next 3 foes by a combined 141-49, they trailed GT 14-7 when GT lost QB Joshua Nesbitt to injury and LY rallied for a 7 pt win. They were +1 in TO's at NC and Miami and in the ACC Title game, FSU played without QB Christian Ponder as VT won 44-33. VT was then whipped by Stanford in the bowl 40-12. VT was the first team to go unbeaten in ACC play since 2000 but benefitted from +19 in TO's and this year has just 12 ret st'rs. For most teams that would have me calling for a drop-off but with Beamer as the head man, this year's team has a great shot at its 5th ACC Title in 8 years and remember LY they only returned 11 starters and were +9 in TO's in '09. This team is not dominant but reminds me of the 2010 Auburn tm in terms of schedule. VT should be favored in all 6 road games and gets its toughest opp's at home (like eventual Nat'l Champ Auburn who had 4 of its 5 toughest at home). Despite only ranking #15 in my Power Poll, 8 of my 9 sets of power ratings calls for a 12-0 regular season!

## OFFENSE

**JERSEY # IN MAROON**

## 2011 PROJECTED STARTING LINEUP

**JERSEY # IN MAROON**

## DEFENSE

**QB 3 Logan Thomas So.** 6-6 245 PS#3TE. 107 (46%, 0-0) rFr. 5 Ricardo Young (6'0" 176 rFr) PS#22. 6 Mark Leal (6'0" 199 Jr) PS#83. Ju-Ju Clayton (6'1" 220 Jr) PS#185. 5 gm LY. **16** Trey Gresh (6'0" 209 rFr) PS#383. **RB 4 David Wilson Jr.** 5-10 201 PS#88. 334 (5.7) true. 2 st, 619 (5.5), **1st Tm ACC** KR LY. **2** Josh Oglesby (5'11" 210 Sr) PS#75. 423 (3.6) '08-'09. 49 (8.2) LY. **22** Tony Gregory (6'0" 187 So) PS#113. 102 (4.4), 10 gm (ACL) rFr. **WR 7 MARCUS DAVIS JR.** 6-4 231 PS#50QB. 125 (25.0) rFr. 3 st, 239 (12.6) LY. **FB 39 Martin Scales** (5'11" 216 Jr) 14 gm LY. **45** Joey Phillips (5'11" 214 Jr) 10 gm 2Y. **32** Riley Beiro (5'9" 227 rFr) Super Iron Hokie LY. **WR 19 DANNY COALE SR.** 6-0 196 PS#162. 26 st, 122 (15.5) '08-'09. 14 st, 732 (18.8) LY. **11** Dyrrell Roberts (6'2" 185 Sr) PS#94. 10 st, 617 (15.8) 2Y. 4 st, 303 (14.4) LY. **29** Xavier Boyce (6'4" 225 Jr) PS#83. 3 sts LY. ? for '11. **WR 81 JARRETT BOYKIN SR.** 6-2 219 PS#118. 18 st, 1276 (18.2) 2Y. 14 st, 847 (16.0), **2nd Tm ACC** LY. **18 DJ Coles** (6'3" 225 Jr) PS#38. 13 gm true. 27 (9.0) LY. **85** EL Smiling (6'3" 194 rFr) PS#172. Robert Lockhart PS#200. **TE 33 Chris Drager Sr.** 6-3 256 PS#21. 1 st, 37 (12.3) rFr. 11 st at DE, 56 tkl, 12.5 flt '09-'10. **80** Jerome Lewis (6'3" 240 rFr) PS#14. **86** Eric Martin (6'2" 261 So) PS#42. 1 st, 7 gm rFr. **13** Randall Dunn (6'2" 243 Jr) 1 rec 2Y. **C 74 Andrew Miller So.** 6-4 290 PS#148. 11 gm rFr. **67** Michael Ivy (6'7" 285 Jr) PS#105. 3 st, 7 gm rFr. 4 games LY. Tyler Barfield (6'1" 299 So) no gm action rFr. **LS 50** Collin Carroll (6'3" 248 Sr) 41 games '08-'10. **RG 68 JAYMES BROOKS SR.** 6-2 307 PS#132. 14 st RG, '08-'09. 14 st RG, **2nd Tm ACC** LY. **60** Laurence Gibson (6'4" 299 rFr) PS#131. **79** Caleb Farris (6'3" 306 Fr) PS#100. **10** IFS. Dale Davis (6'2" 292 rFr). Bo Gentry (5'9" 228 Jr). **LG 75 GREG NOSAL SR.** 6-6 281 PS#15TE. 2 gm rFr. 1 st LG, 12 gm '09. 14 st LG LY. **76** David Wang (6'1" 301 So) PS#82DL. 5 gm rFr. **64** Matt Arkema (6'3" 290 rFr) PS#88. **59** Courtney Prince (6'2" 286 Jr) PS#179. **RT 62 BLAKE DeCHRISTOPHER SR.** 6-5 312 PS#100. 11 st RT (inj) rFr. 12 st RT (inj) '09. 14 st RT, **2nd Tm ACC** LY. **71** Vinston Painter (6'6" 296 Jr) PS#21. **70** Kory Gough (6'5" 296 Fr) PS#233. Darian Fisher (6'4" 267 So) PS#268. **LT 72 ANDREW LANIER SR.** 6-5 282 PS#52TE. DNP '08. 1 st RT, 9 gm '09. 14 st LT LY. **54** Nick Becton (6'6" 313 Jr) PS#82. 4 gm rFr. 12 gm LY. **69** Mark Shuman (6'7" 301 rFr) PS#54. Patrick Williams (6'2" 308 Fr). **K 33 Cody Journell So.** 5-11 167 PS#4. No gm action rFr. **48** Justin Myer (6'1" 212 Sr) PS#69. 144 KO (64.0), 22 TB '08-'09. 94 KO (67.2), **30TB** LY. Conor Goulding (5'9" 174 rFr) PS#76. Tyler Weiss (5'10" 169 Sr).

**DE 95 Zack McCray rFr.** 6-5 248 PS#25. 42 JR Collins (6'2" 253 So) 1 st, 25 tkl, 6.5 flt rFr. **90** Duan Perez-Means (6'4" 252 rFr) PS#179. Matt Roth (6'3" 225 Fr) PS#180. Dewayne Alford (6'3" 295 Fr) PS#126. **DT 92 Nick Acree rFr.** 6-5 276 PS#49. 430 bench. **98** Derrick Hopkins (6'0" 288 So) PS#126. 13 gm, 9 tkl, 1.5 flt, 2 qb, 189 pl as true. **53** Dwight Tucker (6'1" 273 Jr) PS#357. 1 tkl, 2 gm rFr. 4 tkl, 1 flt, 11 gm, 117 pl LY. **DT 56 ANTOHOP HOPKINS JR.** 6-0 299 PS#92. 12 st, 45 tkl, 6.5 flt, 7 qb LY. **93** Kwamaine Battle (6'0" 301 Sr) PS#150. 7 tkl '08-'09. 2 st (ACL), 1 tkl LY. Kris Harley PS#39. **55** Isaiah Hamlette (6'4" 274 Jr) PS#178. 4 gm 2Y. **DE 99 James Gayle So.** 6-4 251 PS#217. 2 st, 13 tkl, 6.5 flt rFr. Corey Marshall PS#43. **38** Quillie Odom (6'1" 242 Jr) PS#124. 6 tkl '08-'09. RS LY. **66** Tyrel Wilson (6'1" 214 So) PS#163. 3 tkl rFr. Justin Taylor PS#189. **10** IFS. **WHIP 27 NICK DEW RFR.** 6-2 194 PS#34. **43** Jeron Gouveia-Winslow (6'2" 195 Jr) PS#76. 3 tkl rFr. 7 st, 41 tkl LY. **28** Alonzo Tweedy (6'2" 185 Jr) PS#443. 24 tkl LY. 18 tkl LY. 13 st, 39 tkl, 8 pbu, 9 int (#1 NCAA), **1st Tm AA** LY. **MLB 51 BRUCE TAYLOR JR.** 6-2 252 PS#28. 6 tkl rFr. 14 st, 91 tkl, 15.5 flt, **2nd Tm ACC** LY. **52** Barquell Rivers (6'0" 241 Sr) PS#42. 14 st, 106 tkl '08-'09. OFY (inj'd) LY. **58** Jack Taylor (5'11" 220 So) PS#329. 1 st, 25 tkl, 6 flt rFr. **ILB 24 Tariq Edwards So.** 6-2 229 PS#56. 21 st, 39 tkl, **36** Chase Williams (6'1" 223 Fr) PS#50. **57** Telvion Clark (6'1" 214 So) PS#62. 5 pl rFr. Luther Maddy PS#362. Brian Lahti (6'3" 205 rFr). Jonathan Halfhide (5'10" 164 Fr). **CB 20 JAYRON HOSLEY JR.** 5-10 170 PS#60. 11 tkl true. 13 st, 39 tkl, 8 pbu, 9 int (#1 NCAA), **1st Tm AA** LY. **3** Cris Hill (5'11" 176 Sr) PS#101. 2 st, 31 tkl 3Y. **30** Adeboye Aromire PS#107. IFS. Germond Oatneal (5'11" 184 Sr). **CB 17 Kyle Fuller So.** 6-0 185 PS#159. 6 st, 32 tkl, 6 pbu true. Kysheon Jarrett (5'10" 175 Fr) PS#35. **8** Detrick Bonner (6'0" 183 rFr) PS#225. James Farrow (6'0" 170 Fr) PS#116. Nick Bush (5'10" 164 Fr). IFS. **ROV 1 Antone Exum So.** 5-11 217 PS#45QB. 5 st, 45 tkl, 9 pbu, 4 thm ACC rFr. **23** Lorenzo Williams (6'2" 215 Jr) PS#136. 6 tkl true. RS '09. No action LY. **40** Wiley Brown (5'10" 196 Jr) Duquesne trans. 13 tkl LY. **FS 15 EDDIE WHITLEY SR.** 6-1 187 PS#82. 1 st, 26 tkl '08-'09. 13 st, 80 tkl, 8 pb LY. **21** Theron Norman (6'3" 209 rFr) PS#76. Remmy Vandye (6'3" 200 Fr) PS#64. Carl Jackson (5'9" 174 Fr). Ryan Cassidy (5'10" 183 rFr). **P NA SCOTT DENN JR.** 5-11 194 RS here '08. No game action the last 2 yrs. **82** Ethan Keyserling (6'2" 203 rFr) PS#68. Grant Bowden (6'4" 190 So) PS#83. No game action rFr. Conor Goulding (5'9" 174 rFr) PS#76.



# VIRGINIA TECH HOKIES

**Blacksburg, Virginia**  
**Weather (540) 552-0084**

**FRANK BEAMER (Career 198-95-2)**

**25th Year at VIRGINIA TECH** FCS: 42-23-2  
Bowls: 8-10

**Beamer's records AT VIRGINIA TECH**

198-95-2 Straight Up 6-27 Vs Top 10  
117-31-1 Home 39-42-1 Vs Top 25  
70-49-1 Away 31-43-2 Vs BCS Teams  
11-15 Neutral 28-25 Off A Bye  
104-32 Vs Conference 45-37-1 Off A Loss

**2010 RECORD: (11-3)** RETURNING STARTERS:  
**OFFENSE: 7**  
**DEFENSE: 5**

LETTERMEN:  
Returning: 45 (20,23,2)  
Lost: 22 (10,12)

**ACC - COASTAL** 2004 1st Yr ACC  
1991-03 Big East

**WR Dyrrell Roberts**



**LAST 5 BOWL GAMES**

**VIRGINIA TECH'S ALL-TIME BOWL RECORD 9-15**

YR	BOWL/TH RN	LINE	OPPONENT	SCORE
06	Chick-fil-A - #14	-3	Georgia	24-31
07	Orange - #5	-3	Kansas - #8	21-24
08	Orange - #21	+2	Cincinnati - #12	20-7
09	Chick-fil-A - #12	-5	Tennessee	37-14
10	Orange - #12	+3	Stanford - #5	12-40

Date	Opponent	TURF	LINE	Final Score VT Opp	W L
Sep. 3	Appalachian St	G			
Sep. 10	at East Carolina	G			
Sep. 17	Arkansas St	G			
Sep. 24	at Marshall	A			
Oct. 1	Clemson	G			
Oct. 8	Miami, FL	G			
Oct. 15	at Wake Forest	A			
Oct. 22	Boston College (HC)	G			
Oct. 29	at Duke	G			
Nov. 5					
Nov. 10	at Georgia Tech (Thur)	G			
Nov. 17	North Carolina (Thur)	G			
Nov. 26	at Virginia	G			
Dec. 3					

**CAREER PASSING LEADERS**  
1. Tyrod Taylor 7,017 '07-'10  
2. Bryan Randall 6,508 '01-'04  
3. Don Strock 6,009 '70-'72

**CAREER RUSHING LEADERS**  
1. Cyrus Lawrence 3,767 '79-'82  
2. Kevin Jones 3,475 '01-'03  
3. Roscoe Coles 3,459 '74-'77

**CAREER RECEIVING LEADERS**  
1. Ricky Scales 2,272 '72-'74  
2. Antonio Freeman 2,207 '91-'94  
3. Jarrett Boykin 2,123 '08-Present

VT's loss to FCS James Madison LY snapped a 32 gm win streak vs non-conf opp's at home. VT is 3-0 vs ASU (L/gm in '82). App St went 10-3 LY & have made the FCS playoffs the L6Y ('06, '07 & '08 FCS Titles).

With LY's win vs EC, VT avoided its worst start S/'87 (Beamer's 1st at the helm). VT has won 8 of 9 incl 3 str at EC. VT is 17-1 in true road openers (last loss in Greenville ironically was the '92 road opener).

Virginia Tech is 3-0 vs Arkansas St ('94, '97 & '02) with the avg score 49-5. VT has outgained ASU on avg 422-191 (22-11 avg FD edge) holding the Red Wolves to a combined 121 rush yds (1.2).

The Hokies haven't been to Huntington S'40 (last loss in series). VT won the 3 most recent gms ('02, '05 & '09) by an avg score of 47-15. Into 2011, VT is 3-1 in true non-conf AG's since joining the ACC ('04).

VT has won 5 str by 23 ppg. Last gm ('07) VT was outgained 380-219 (-12 FD's) as 29 of its 41 pts came on ST/def incl a 32 yd IR TD, 82 yd PR TD & 100 yd KR TD (VT led 24-3 mid-2Q with just 46 yds off).

Over the L12Y these schools have both come in ranked 9x's (higher ranking tm is 4-5). LY's gm was tied 17-17 into the 4Q but UM tossed 3 int's in VT territory on its L3 poss.

VT has won its L7 trips to Winston-Salem (last loss in '70). Last trip ('06) VT only led 7-3 at HT but pulled away in the 3Q incl a 35 yd FR TD to seal it. VT is 23-5 on the ACC road (4 sweeps in 7Y).

From '91-'03 these tms were a part of the BE. VT has won 3 str by 18+ pts. LY VT got its 2nd series shutout & leading 7-0 just before HT, held BC out of the EZ as the QB just missed the pylon.

Virginia Tech has won 10 straight vs Duke with the last series loss in 1981 (in Durham). LTH VT led throughout the final 3Q's. Duke scored w/25 left but the outside K failed.

Bonus: Hokies are 7-0 in ACC openers. VT is 22-2 in Nov gms. Under Beamer when VT is ranked they are just 1-11 vs tms ranked in the Top 5 (only win vs #2 UM in '03, VT #10).

Winner of this gm has represented the Coastal in every ACC Title gm (L6Y). Visitor has dropped 3 str (avg MOV is 5 ppg). L/gm in ATL VT got a TD w/1:48 left but trailed by DD most of the game.

VT is 6-1 vs NC. LY NC led 10-6 early 2Q & was driving but VT got an int in the EZ which started a streak of 20 unanswered pts (324-115 yd edge). NC had 6 TO's on its L8 drives.

This series is played for the Commonwealth Cup (VT will have had it for 2,555 str days). VT has won 7 str which is the longest streak in this 92 gm series since UVA won the first 8 (1895-1904).

**STADIUM: LANE STADIUM (66,233) (#33)**  
**PLAYING SURFACE: GRASS**

	2001	2002	2003	2004	2005	2006	2007	2008	2009	2010	10Yr Total
STRAIGHT UP	8-4	10-4	8-5	10-3	11-2	10-3	11-3	10-4	10-3	11-3	99-34
Home	4-2	6-2	6-1	6-1	5-1	7-1	6-1	6-0	5-1	6-1	57-11
Away	4-1	3-2	2-3	4-0	5-0	3-2	4-1	2-3	4-1	4-0	35-13
Neutral	0-1	1-0	0-1	0-2	1-1	0-0	1-1	2-1	1-1	1-2	7-10
vs Conf	4-3	3-4	4-3	7-1	7-2	6-2	8-1	6-3	6-2	9-0	60-21
vs Non-Conf	4-1	7-0	4-2	3-2	4-0	4-1	3-2	4-1	4-1	2-3	39-13
ATS	6-6	7-7	5-7	9-3	10-3	7-5	7-5	6-7	7-5	10-4	74-52-2
Home Fav	2-3	4-4	4-1	4-2	4-2	3-3	2-3	1-4	3-2	5-2	32-26-1
Home Dog	1-0	0-0	1-0	0-0	0-0	1-0	0-0	0-0	1-0	0-0	4-0
Away Fav	3-2	2-2	0-4	2-1	5-0	2-2	2-0	0-0	2-2	4-0	22-13-1
Away Dog	0-0	1-0	0-1	1-0	0-0	0-0	2-1	3-2	0-0	0-0	7-4
Neutral	0-1	0-1	0-1	2-0	1-1	0-0	1-1	2-1	1-1	1-2	8-9
vs Conf	4-3	1-6	2-5	5-3	7-2	6-2	7-2	4-5	5-3	8-1	49-32
vs Non-Conf	2-3	6-1	3-2	4-0	3-1	1-3	0-3	1-2	2-2	3-3	25-20-2
Off SU Win	5-3	5-4	3-4	6-3	7-3	6-4	6-4	5-4	6-3	9-2	58-34
Off SU Loss	1-2	1-3	1-3	2-0	2-0	1-1	1-0	1-2	1-1	1-1	12-13-2



**NEWCOMERS 3 VHT 12 HT**

DL Kris Harley 6-1 275 PS#39  
DL Corey Marshall 6-2 252 PS#43  
DB Kyshoen Jarrett 5-10 175 PS#35  
DB Ronny Vandyke 6-3 200 PS#64  
DB Adeboye Argonie 5-11 195 PS#107 IFS  
TE Darius Redman 6-4 240 PS#171  
DB James Farrow 6-0 170 PS#116  
TE Christian Reeves 6-3 215 PS#38  
RB Michael Holmes 6-1 200 PS#88  
TE Chris Hall 6-5 232 PS#42  
DB Ryan Malleck 6-5 240 PS#44  
DB Michael Cole 6-1 200 PS#159  
DB Jake Gorns 6-5 288 PS#171  
DL Matt Roth 6-3 225 PS#180  
DE Justin Taylor 6-2 220 PS#189 '10  
WR Robert Lockhart 6-2 175 PS#200  
DL Dewayne Allford 6-3 225 PS#262  
DL Demetri Knowles 6-0 175 PS#222  
WR Wesley Estime 6-3 215 PS#268  
DL Luther Maddy 6-1 280 PS#362  
WR Kevin Asante 6-0 185 PS#370

## 2010 STATISTICAL LEADERS

RUSHING	ATT	GAIN	LOST	NET	TD	AVG	PLAYER	TKL	SKS	FL	PBU	INT	QBH
Darren Evans	151	886	32	854	11	5.7	Bruce Taylor	91	6	9.5	4	0	12
Tyrod Taylor	146	915	256	659	5	4.5	Davon Morgan	82	0	1	4	5	0
David Wilson	113	642	23	619	5	5.5	Eddie Whitley	80	0	4	6	2	3
Ryan Williams	110	529	52	477	9	4.3	Steven Friday	66	8.5	6.5	1	0	21
Tony Gregory	23	107	5	102	0	4.4	Lyndell Gibson	66	2	4	1	0	10
Josh Oglesby	6	49	0	49	0	8.2	Antone Exum	45	0	1.5	9	0	7
Logan Thomas	6	29	7	22	0	3.7	Antoine Hopkins	45	2	4.5	1	0	7
Dyrrell Roberts	3	20	4	16	0	5.3	Jeron Gouveia-Winslow	41	0	1	1	2	3
PASSING	ATT	COMP	PCT	YDS	TD	INT	Rashad Carmichael <td>40</td> <td>0</td> <td>1.5</td> <td>7</td> <td>4</td> <td>0</td>	40	0	1.5	7	4	0
Tyrod Taylor	315	188	59.7	2743	24	5	Jayron Hosley	39	0	1	8	9	0
Logan Thomas	26	12	46.2	107	0	0	John Graves	37	1.5	3.5	1	0	16
RECEIVING	REC	YDS	AVG	TD	LONG	Chris Drager <td>34</td> <td>2</td> <td>4</td> <td>4</td> <td>0</td> <td>20</td> <td></td>	34	2	4	4	0	20	
Jarrett Boykin	53	847	16.0	6	69	Kyle Fuller	32	0	4	6	0	0	
Danny Coak	19	732	18.8	3	59	JR Collins	25	5	1.5	0	0	5	
Dyrrell Roberts	21	303	14.4	2	43	Jack Tyler	25	0	6	1	0	0	
Marcus Davis	19	239	12.6	2	46	Tariq Edwards	21	0	0	0	1	2	
David Wilson	15	234	15.6	4	65	Alonzo Tweedy	18	0	0	0	0	0	
Andre Smith	20	195	9.8	5	21	Martin Scales	14	0	0	0	0	0	
Ryan Williams	10	109	10.9	1	29	James Gayle	13	4	2.5	0	0	12	
Darren Evans	9	100	11.1	0	30	Wiley Brown	13	0	0	0	0	0	
DJ Coles	3	27	9.0	0	14	PUNT RETURNS	NO	YDS	AVG	TD			
PUNTING	NO	YDS	AVG	FC	NET	BLK	INT	19	239	12.6	1		
Brian Saunders	60	2639	44.0	12	38.3	1	18	KICK RETURNS	NO	YDS	AVG	TD	
KICKING	XP	1-29	30-39	40-49	50+	TTL	1	18	David Wilson	22	584	26.5	2
Chris Hazley	53-56	6-6	8-9	6-6	1-1	21-22	52	Dyrrell Roberts	16	310	19.4	0	

## OFFENSE - LAST 7 YEARS - DEFENSE

RET	OFF	TOTAL	OFF	OFF	PASS	PASS	AVG	OFF	SKS	TOTAL
STS	PTS	OFF	RUSH	YPC	PASS	PASS	YPC	VS	TURN	
8*	33.9	402	199	4.9	204	58.3	6.2	11.9	34	+19
8*	31.8	392	208	4.7	184	55.0	6.2	12.3	31	+9
6*	22.1	303	208	3.8	129	57.4	4.5	13.7	42	+14
8*	28.7	331	134	3.3	197	57.8	4.9	11.5	54	+11
4	25.8	295	113	3.2	182	56.2	4.9	11.4	29	+4
7	33.8	281	191	4.1	190	60.1	5.5	11.3	34	+9
5*	30.8	365	178	4.2	187	56.1	5.5	11.9	36	+13

## OFFENSE - 2010 STATS BY GAME - DEFENSE

2010																					
OPP	PASS	AVG	OFF	YPP	SYS	VS	TOTAL	RET	STS	DEF	TOTAL	DEF	RUSH	YPP	DEF	PASS	AVG	YPP	SYS	VS	TOTAL
2004	58.3	6.2	11.9	34	+19			3	7	20.6	362	156	4.7	206	52.2	5.7	17.6	34			
2009	58.0	6.2	12.3	31	+9			7	15.6	295	128	3.6	167	47.4	4.6	18.6	36				
2018	57.4	4.5	13.7	42	+14			4	16.7	279	104	3.2	175	52.8	4.9	16.7	35				
2017	57.8	4.9	11.5	54	+11			8	16.1	297	87	2.7	210	53.5	4.3	18.5	47				
1982	56.2	4.9	11.4	29	+4			5	11.0	219	91	2.8	128	51.3	3.8	20.0	30				
1990	60.1	5.5	11.3	34	+9			6	12.9	247	93	3.0	154	49.6	4.1	19.2	37				
2017	56.1	5.5	11.9	36	+13			5	12.8	268	115	3.2	153	54.2	4.4	20.9	34				
2010 STATS BY GAME - DEFENSE																					
Pass											Rush										
Opp	FD	Att	Yds	Avg	Co	Att	Yds	Sks	TO	TD	Opp	FD	Att	Yds	Avg	Co	Att	Yds	Sks	TO	
01	44	-128	2.9	15	-22	186	3	383	18	24	-168	7.0	23	-38	215	1	+1	-69	95.4		
02	23	44	-238	5.4	10	-16	124	0	235	14	41	-114	2.8	5	-8	121	2	-3	127	60.2	
03	22	41	-249	6.1	8	-16	199	2	361	22	30	-110	3.7	30	-44	251	3	+1	87	75.6	
04	16	40	-106	2.7	16	-21	237	2	250	16	28	-70	2.5	16	-32	180	6	+2	93	91.6	
05	17	37	-317	8.6	12	-24	123	4	507	24	33	-145	4.4	21	-49	362	1	+2	-67	86.6	
06	18	28	-230	8.2	14	-25	164	1	401	21	36	-135	3.8	21	-48	266	3	0	-7	72.3	
07	35	54	-291	5.4	22	-35	314	1	346	9	25	-254	10.2	4	-17	92	1	0	259	88.6	
08	19	39	-159	4.1	19	-31	332	1	208	10	30	-92	3.1	12	-36	116	2	+1	283	97.4	
09	23	40	-198	5.0	15	-25	137	0	426	15	51	-346	6.8	2	-10	80	3	0	-91	71.2	
10	18	38	-169	4.4	13	-28	249	3	314	21	32	-117	3.7	18	-33	197	4	+6	104	94.6	
11	19	48	-251	5.2	8	-15	118	5	464	23	42	-262	6.2	15	-33	202	2	+5	-95	88.0	
12	20	40	-201	5.0	14	-24	182	1	291	13	34	-70	2.1	16	-26	221	4	+1	92	84.7	
13	42	21	43	-179	4.2	18	-28	263	3	341	19	28	-53	1.9	23	-32	288	1	+2	101	99.3
14	28	16	34	-66	1.9	16	-33	222	8	534	19	31	-247	8.0	18	-23	287	1	+1	-246	73.4
TOTAL	389	570	-2782	4.9	200	-343	2850	34	5061	244	465	-2183	4.7	224	-229	2878	34	+19	571	82.9	
ATT	20.6	41	-199	4.9	58.3%	204	9.9%	36.2	17.4	33	-156	4.7	52.2%	206	7.9%	1.4	41	#23			
66,233 (#24) HOME	431	22.7	41	-224	5.5	58.7%	207	3.5%	324	14.9	35	-160	4.5	44.7%	164	9.5%	0	107	78.6		
66,233 (#24) AWAY	18.6	41	-174	4.3	58.1%	200	16.3%	309	20.1	31	-152	4.4	57.6%	247	9.7%	+10	-26	88.0			