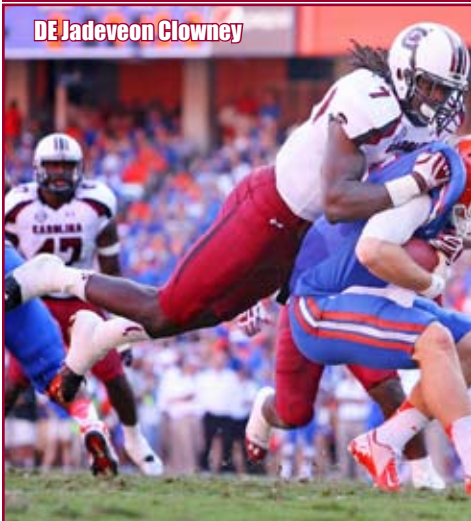


# SOUTH CAROLINA GAMECOCKS

DE Jadeveon Clowney



## POSITION OUTLOOK FOR 2013

**QUARTERBACKS** - In 2011 ret st'r Stephen Garcia had just 4 sts. Connor Shaw got his first st vs Kentucky (26-39-311) and never let go of the starting job. In 9 sts Shaw threw for 1,448 (65%, 14-6) and was the #2 rusher (525, 3.9). He opened up 13-1 as a starter, the best record after 14 gms of any QB here ever. LY Shaw was banged up in the opener vs Vandy and after Dylan Thompson went 0-3, Shaw came off the bench to gallantly lead the 4Q comeback win. The 2 QB's comb to hit 7-14-67 which is believed to be an all-time low for passing yards for a Spurrier offense. Shaw sat vs EC and Thompson hit 21-37-330. Shaw st'd vs UAB but was inj'd in the 2Q. Despite some calling for Thompson to start vs MO, Shaw threw an inc but hit his next 20 (249 yds), tying for the 2nd most consec comp passes in SEC history (Miss, Kent Austin '82). His 95.2% comp was 2nd highest in SEC history behind Tee Martin (UT '98). Spurrier said that Shaw throws a very catchable ball. Shaw threw for just 140 ypg the next 4 but then hit 22-32-356 vs Tenn and 272 vs Ark. Shaw was inj'd vs Wofford and Thompson hit 23-41-310 vs Clemson. Shaw finished with 1,956 (67.5%, 17-7) while adding 435 (3.3) rush and Thompson had 1027 (52.0%, 10-2). TY they return a healthy Shaw (miss spg, foot), an exp'd bkp plus get the addition of rFr Brendan Nosovitch (6'1" 223 rFr, PS#39) and true Conner Mitch (PS#27 IFS). Both QB's will play and look for some formations with Shaw at WR. Under Spurrier, SC's high is 258 ypg pass ('07) and that should be beat TY.

**RUNNING BACKS** - In '10 their top 3 RB's all ret'd but I listed true frosh Marcus Lattimore (PS#1) on my Preseason All-SEC Tm. Lattimore became the first 1,000 yd rusher here s/'00 with 1,197 (4.8) despite missing most of 3 gms with inj's. Kenny Miles (626, 5.4 '09) had 152 (3.8). In '11 Lattimore was on his way to a great season (818, 5.0) but was OFY (ACL) vs MSt. True frosh Brandon Wilds (PS#53) rushed for 486 (4.5) while Miles added 204 (3.8). QB's were the #2 and #5 rushers. True frosh Shon Carson (PS#23) had an ACL Wk 2 and RS. LY Lattimore suffered a gruesome leg inj vs Tenn (662, 4.6). He still broke the SC record for career rushing td's w/38 (George Rogers, 33). Wilds RS while true frosh Mike Davis (PS#11) had 275 (5.3 ypc). Miles had 127 vs Wofford and Davis had 84 vs UAB and 53 vs Ark as the only 3 non-Lattimore RB efforts that

topped 50 yards. Miles finished #3 (359, 3.5) and QB's were #2 and #6. Davis was the MIP RB this spring. Lattimore departs (#4DC SF) but since he missed half of 2012 and they get back Wilds and add in 2 VHT true frosh, I will actually call this unit to match last year's production.

**RECEIVERS** - With the loss of 6'4" Alshon Jeffrey (#2DC CHI), the WR's had a much different look LY. The top 3 WR's were 5'8", 5'9" and 5'9" and 2 TE's and 2 RB's were among the top 6 on the team in receptions. 6'1" true frosh Shaq Roland (PS#6) surprisingly had just 5 rec. Bruce Ellington ply'd '11 at 185 lbs and was #3 (211, 12.4). LY he bulked up to 197 and led with 600 (15.0). He is also on the SC basketball tm. Ace Sanders (#2, 531, 11.8) had 119 vs Clemson and 92 in the bowl. TE Justice Cunningham (142, 7.9, '11) was #4 (324, 14.1). Rory Anderson had 271 (19.4) while soph Damiere Byrd (PS#29, 1 rec true) had 366 and a tm high 26.1 ypc. TY they lose Cunningham (11 st, #7DC IND), 6'5" DL Moore (6 st, 139, 17.4) and Sanders (deep threat) left early for the NFL (#4DC JAX). With 4 of their top 6 back this unit is more experienced and Spurrier feels he has perhaps the best TE combo in the country.

**OFFENSIVE LINE** - SC has had only 3 OL earn 1st Tm SEC. In each of Spurrier's first 5Y ('05-'09) this was an injury plagued group. Only once did they top 3.6 ypc rush ('06, 4.5). They had 72 car sts back in '10 and improved to 4.1 ypc and then w/70 career sts in '11, they had a Spurrier best 192 ypc rush (4.5, 30 sk, 9.5%). LY they had to replace a rare 1st Tm SEC OL (#5DC), their LT (21 car sts) and RG (12 st). They did return 3rd Tm SEC C TJ Johnson and had 61 car sts back. They plugged in rFr Brandon Shell (PS#7) at LT but he lost his spot and moved to RT. SC dropped to 138 ypg (3.7) with 38 sks (10.4%). TY they lose 2nd Tm SEC C Johnson (13 st, 4Y str, #7DC CIN) but everyone else is back (72 car sts) and this could be Spurrier's best O-line in his 9 years here.

**DEFENSIVE LINE** - In each of Spurrier's first 5 yrs, the DL was banged up. In '10 SC allowed 112 ypg rush (3.4 best s/'00), with 41 sk (DL 31), the most in 20+ yrs. In '11 they had to replace 2 str's (#7DC). At midyear Spurrier said that their OL couldn't blk the DL in practice as PS#1 DE Jadeveon Clowney was a bkp behind 2 super DE's. It was very surprising that SC regressed to all g 136 ypg (3.6) however they did face tms (Navy, The Citadel) where they were big favorites (not "A" gm). Taking those 2 efforts away, they allowed 114 ypg (3.2) and the D had 31 sks. LY they had to replace a DT (13 st, #7DC) and 2nd Tm AA DE Melvin Ingram (12 st, 10 sk, #1DC). They allowed 121 ypg (3.1) but the sks climbed to 43. TY they lose 3rd Tm SEC DE Devin Taylor (13 st, 45 tkl, 3 sk, 5.5 tfl, #4DC DET), DT Byron Jerideau (13 st, 40 tkl, 2.5 sk) and Aldrick Fordham (22 tkl, 5.5 sk). While they lose 3 very productive DL's, their main guy Clowney is back for one more year (potential 1st player taken in '14 NFL draft) and SC will be just as strong.

**LINEBACKERS** - LY SC had to replace 2nd Tm SEC Spur Antonio Allen (#1 tklr, #7DC) and Rodney Paulk (6 st, #3 tklr). They moved in S DeVonte Holloman (10 st, #5) and ret'd 3 LB's who st'd 4+ (#4, #7, #10 tklrs). They were a senior laden and highly productive group (18.2 ppg). Unfortunately TY they lose their top 5 LB tklrs and their leading returnee, true frosh Jordan Diggs (PS#30), had just 5 tkl's. Gone are Shaq Wilson (13 st, #1 tklr, 4.5 tfl), Reginald Bowens (13 st, #3 tklr, 1 sk), Holloman (13 st, #4 tklr, 8 tfl, #6DC DAL), Quin Smith (#7 tklr, 4 tfl) and Damario Jeffery (PS#22, 2 st, #14 tklr, 3.5 tfl). Naturally this unit is my biggest ? on the team.

**DEFENSIVE BACKS** - SC has had just one blip on their pass D rankings s/'07. They finished #35 in '07, #30, #27 then surprisingly #92 in '10. In '11 just as surprisingly, they moved back up to #4 with just 2 str's back. LY they had to replace 2

str's (#1DC). I said they wouldn't match '11's #4 PDR. No DB st'd all 12 but SC was still a solid #24 (56.2%, 18-15). TY they lose 2nd Tm SEC FS DJ Swearingin (#2 tklr, 7 pbu, #2DC HOU) and CB Akeem Augustine (18 tkl). Despite losing their top guy, this unit is more exp'd and should be one of the FBS's stronger secondaries.

**SPECIAL TEAMS** - As shown on this page, SC has never finished very high in my ST rankings. LY Spurrier brought in a Div III transfer Tyler Hull who avg 39.4 (36.0 tm net). He was named one of the Top 12 JUCO K or P's at the Chris Sailer Camp in Las Vegas. Ace Sanders set the SC record for PR yds in a season with 429 (15.3, 2nd Tm AA) topping Dickie Harris' 362 (71). Bruce Ellington had 463 (23.1) in '11 on KR's and 406 (22.6) LY. Adam Yates hit 11-17 fg's (L51) but was 0-2 in the bowl. SC finished #53. TY they lose Yates and AA Sanders.

**COACHES** - How many coaches can you name that have 200+ college wins, while also having HC exp in both the NFL and USFL? Steve Spurrier took over here in '05 and in '10 led SC to their first ever SEC Title game and followed that with a school record 11 wins in each of the last 2 ssns. Spurrier calls his own plays but LY promoted his son, Steve Jr and OL cch Shawn Elliot to co-OC's. They are in their 9th and 4th ssns respectively. Lorenzo Ward was the DB coach at VT ('99-'05), Ark ('07) and here since '08. He is in his second season as DC.

**ALSO ON ROSTER:**  
QB Perry O'Neil 6'1" 244 lb  
QB Austin Heist 6'2" 227 lb  
FB Connor McClaurin 6'0" 237 lb  
FB Garrison Giet 5'10" 245 lb  
FB Ty Sutherland 5'10" 240 lb  
FB Jordan Diaz 6'1" 243 lb  
DL Ashton Holmes 6'3" 269 lb  
DL Michael Washington 6'3" 249 lb

## PHIL'S FORECAST

When the preseason poll debuts, the Gamecocks will have been ranked for 48 consec wks, the longest streak in SC history. SC's last conf title, however, came in the ACC in 1969. Steve Spurrier has now had 0 losing seasons in 8 yrs (7 bowls). Spurrier's high water mark in his first 5 yrs was at #6 in '07 when the team was 6-1 but they finished just 6-6 (NR). After winning 7 in '08 and '09 SC stepped it up to 9-5 (#22) in '10. They were 11-2 and finished #9 (in '11). It was the 2nd year in a row they swept their biggest 4 rivals (UG, GA, Tenn and Clem). LY SC opened #9 and finished #8. They got as high as #3 (highest s/'84) after knocking off #5 GA. A tough schedule got the best of them as their only 2 losses came in their 2nd and 3rd gms of a brutal 3 game stretch (3 Top 10 tms). SC opened vs Vandy. QB Shaw was inj'd and bkp Thompson struggled but they still escaped, 17-13. Thompson led a 48-10 win over EC then Shaw ret'd vs UAB and they won 49-6 (Spurrier's 200th win). Shaw had 20 straight comp in their 31-10 win vs Missouri. They trailed Kentucky 17-7 but UK blew an opp at the end of 1H not even getting a fg off from the 3 yd line. SC scored 10 pts in the final minutes and won by 21. SC obliterated UGA (led 21-0 after 1Q) but at #3, in their 2nd str tough game and in Death Valley vs a desperate #9 LSU, they were outgained 406-211 and lost 23-21. They had a 3rd str tough game, on the road in "The Swamp" and TO's did them in. SC had a 103-29 yd edge at half but trailed 21-6 and 37-8 after 3Q's. Tenn gave them a game but SC won 38-35. SC then beat Ark and Wofford and were outgained by Clem 237-188 at the half (trailed 14-10) but rallied for a 27-17 win. In the bowl they rallied again getting a late td pass in the final seconds to pull out a 33-28 win over Michigan. TY SC is just #96 in my Exp Chart (pg 37). The Gamecocks do catch a break being the only one of the top 3 in the East not to face Bama, LSU or A&M. SC has 2 capable QB's and should top 300 ypg passing for the first time under Spurrier. The D loses 6 key starters but returns Jadeveon Clowney. They get UF and Clemson at home and figure to be an underdog in only one game and that is Wk 2 at UGA, a team they have defeated 3 straight years. SC is a legitimate National Title Contender.

## 2013 PROJECTED STARTING LINEUP

<b>QB 14 CONNOR SHAW SR.</b>	6-1 204 PS#47. 9 gm, 223 (70%, 1-2) true. 9 st, 1448 (65%, 14-6) '11. 11 st, 1956 (68%, 17-7) 608 rush (3.3) LY. OFS. 17 Dylan Thompson (6'3" 212 Jr) PS#72. 4 gm '11. 2 st, 1027 (52%, 10-2), 131 (0.7) rush LY.	<b>DE 90 Chaz Sutton Sr.</b>	6-5 256 PS#101. 1 st, 20 gm, 18 tkl '10-'11. 1 st, 13 gm, 25 tkl, 5 sk, 2 ffl LY.				
<b>TE 28 Mike Davis So.</b>	5-9 215 PS#11. 12 gm, 275 (5.3) LY. 22 Brandon Wilds (6'2" 218 So) PS#53. 486 (4.5) '11. DNP LY (ankle). 24 Kendrick Salley (5'9" 215 Jr) PS#43. 7 Shon Carson (5'8" 219 So) PS#23. Battle inj LY.	<b>DE 97 JT Surrait Jr.</b>	6-2 311 PS#216. 3 gm, 2 tkl '11. 1 st, 10 gm 14 tkl LY (susp F/3). 92 Gerald Dixon, Jr (6'3" 318 So) PS#160. 2 st, 4 gm, 2 tkl, 1 sk LY. 93 Deon Green (6'4" 283 So) PS#100. Inj'd 11, DNP LY.				
<b>WR 1 DAMIERE BYRD JR.</b>	5-9 168 PS#29. 3 st, 9 gm, 1 rec, 73 rush (7.3) '11. 2 st, 13 gm, 366 (26.1) LY.	<b>DT 99 KELCY QUARLES JR.</b>	6-4 293 PS#18. Signed '10, DNP. LY st, 12 gm, 28 tkl LY, 3rd Tm Fr AA '11.				
3 Nick Jones (5'7" 171 Jr) PS#89. 2 st, 143 (11.9) '11. 3 st, 12 gm, 197 (16.4) LY. 8 Shamier Jeffery (6'1" 244 So) PS#75.	<b>WR 23 BRUCE ELLINGTON JR.</b>	11 st, 38 tkl, 3.5 sk, 4.5 tfl, 1 qbh LY. 52 Phillip Dukes (6'3" 315 So) PS#27. 5 gm, 3 tkl LY. Kelsey Griffin PS#16.	<b>LB 7 JADEVEON CLOWNEY JR.</b>	6-6 272 PS#1. 1 st, 13 gm, 36 tkl, 12 tfl, 2nd Tm SEC '11. 12 st, 54 tkl, 13 sk, 10.5 tfl, 3 ffl, 1 fr. SEC DPOY & 1st Tm AA LY. 8 Darius English (6'6" 225 Jr) PS#134. 2 gm, OFY LY. Devin Washington PS#61.			
<b>WR 23 BRUCE ELLINGTON JR.</b>	5-9 197 211 (12.4) '11. 13 st, 600 (15.0), 406 KR (22.6) LY. KJ Brent (6'4" 185 So) PS#88. 13 gm, 28 (9.3). 12 Jody Fuller (5'11" 211 Jr) PS#38. 86 David Wilkins (6'1" 179 Sr). Matthew Harvey (6'8" 225 So).	<b>WR 18 DEDRICK COOPER SO.</b>	6-2 215 PS#140. 11 gm, 1 tkl LY. Larenz Bryant (6'0" 215 Fr) PS#5. 21 Marquiss Roberts (6'1" 215 So) PS#89. DNP. Knee inj LY. Skai Moore (6'2" 205 Fr) PS#48. DE Jamal Hall (6'2" 234 Sr).	<b>TE 81 RORY ANDERSON JR.</b>	6-5 218 PS#32. 2 st, 13 gm, 188 (23.5) '11. 2 st, 13 gm, 217 (19.4) LY. 88 Jerrell Rainey (6'3" 228 Jr) PS#21TE. David Johnson (6'1" 268 Fr) PS#131. 12 tkl, 20 tfl HS Sr. 46 Darian Sims (6'2" 254 So).		
<b>WR 4 Shaq Roland So.</b>	6-1 182 PS#6. 80 (16.0) LY. Raw talent. 9 Kwintin Smith (6'4" 206 Jr) PS#54.	<b>SPUR 42 JORDAN DIGGS RFR.</b>	6-0 197 PS#30. 2 gm, 5 tkl, RSLY. 9 Sharrod Golightly (5'10" 179 Jr) PS#116. 7 tkl '11. 8 gm, 3 tkl LY. Mohamed Camara PS#160. Jonathan Walton PS#143. 41 Kyle Morini (5'10" 220 Jr) W/O IFS.	<b>LG 50 AJ CANN JR.</b>	6-2 315 PS#141. 3 gm bkp as true. Moved from C. 9 gm '11. 13 st RG LY.	<b>CB 27 VICTOR HAMPTON JR.</b>	5-10 197 PS#30. 10 gm, 14 tkl, 25.4 on KR '11. 12 st, 40 tkl, 1 sk, 2 tfl, 7 pd LY. Ahmad Christian (5'10" 189 So) PS#90. 12 gm, 8 tkl LY. 30 Sidney Rhodes (5'10" 167 Jr) 12 gm, 5 tkl LY. Pharoh Cooper is PS#134.
<b>RG 67 ROLAND PATRICK SR.</b>	6-2 310 PS#25. 13 st, Frosh SEC AA '11. 12 st, 13 gm LY. 65 Brock Stadnik (6'5" 291 Jr) PS#26. AA HS Jr. Shouldelr surg LY. Twin of Clayton. NaTy Rodgers (6'5" 296 Fr) PS#29. AA as HS Sr.	<b>CB 15 JIMMY LEGREE SR.</b>	6-0 185 PS#172. 8 tkl '11. 18 st, 44 tkl, 9 pd LY. 10 Ronnie Martin (5'11" 173 Jr) PS#101JC. IFS. 1 Rico McWilliams (5'11" 178 Jr) PS#71. Ali Groves is PS#150. Jesse Dukes (5'11" 171 Jr).	<b>RT 71 BRANDON SHELL SO.</b>	6-6 321 PS#7. RS '11 (shldr inj). 10 st (9RT, LT), 1st Tm Fr AA LY. 78 Cody Gibson (6'7" 284 Jr) PS#150. 4 st, 7 gm '11. 2 st, 9 gm LY. Weight room award. JP Vonashew (6'6" 283 Fr) PS#66.	<b>SS 12 BRISON WILLIAMS JR.</b>	5-11 205 PS#146. 8 gm, out F/4 brkn arm, 11 tkl '11. 12 st, 52 tkl, 1 sk, 6 pd LY.
<b>LT 53 COREY ROBINSON JR.</b>	6-8 338 PS#137. Moved back to OL in spring '12. 9 st LY, biggest guy on tm.	<b>FS 25 KADETRICK MARCUS JR.</b>	6-1 185 PS#103. 6 gm, 1 tkl '11. 12 gm, 5 tkl LY. 20 Ty Gurley (5'10" 183 So) PS#107. 2 st, 8 gm, 13 tkl. OFY (knee) LY. 6 Chris Moody (6'1" 210 Fr) PS#76. 49 Garrett Shaw (6'0" 190 Fr).	<b>P 13 TYLER HULL JR.</b>	5-9 189 Strong leg, 40 yd fg in scrimm. 5 gm, 13 KO (62.2) 3 TB 0 OOB LY. 16 Nick St Germain (5'9" 180 Jr) PS#37. Good leg, lacks consistency. 45 Jake Joyner (5'11" 186 Fr). 48 Caleb Kelly (6'0" 180 Fr).	<b>K 13 PATRICK FISH JR.</b>	6-2 212 PS#113. 54 punts (39.4), 12 In20, net 36.0. 13 Patrick Fish (6'0" 194 Jr) PS#56. No action '11. 3 punts (35.0) LY. Andrew Komornik (6'5" 235 Fr) IFS. Caleb Kelly (6'0" 180 Fr) 40 yd fg spg.



# SOUTH CAROLINA GAMECOCKS

Columbia, SC WEATHER 29201  
Enrollment: 22,556 (#51)

## STEVE SPURRIER

PLAYING EXP: QB/P at Florida ('63-'66), SF ('67-'75),  
TB ('76) PRIOR HC EXP: USFL ('83-'85),  
Duke ('87-'89), Florida ('90-'01), NFL WAS ('02-'03)

9<sup>TH</sup> Year Here / 24<sup>TH</sup> Overall FBS

### 2012 RECORDS

**11-2**  
CONF: 6-2 (1<sup>ST</sup> East)

### 2013 RET STARTERS:

OFF: 7 DEF: 5

### LETTERMEN (O/D/ST)

RET: 36 (19, 16, 1)

LOST: 24 (10, 11, 3)

Record:	HERE	FBS
Bowls:	66-37	208-77-2
Home:	42-14	122-22
Away:	20-18	61-41-2
Neutral:	4-5	25-14
Vs Conf:	35-30	133-53-1
Vs Top 10:	4-13	22-30-1
Vs Top 25:	15-22	57-50-1
Vs BCS:	10-6	26-22-1
Off Bye:	10-6	34-20
Off Loss:	17-15	39-25-1

**SEC - EAST**



WR Bruce Ellington

### LAST 5 BOWL GAMES

#### SOUTH CAROLINA'S ALL-TIME BOWL RECORD 6-12

YR	BOWL/TM	RR	LINE	OPPONENT	SCORE
08	Outback	+3'	Iowa		10-31
09	Papajohns.com	-3'	Connecticut		7-20
10	Chick-fil-A	-19	Florida St	#23	17-26
11	Capital One	-10	Nebraska	#21	30-13
12	Outback	-11	Michigan	#19	33-28

Date	Opponent	TURF	LINE	Final Score SC Opp	W L
Aug. 29	North Carolina (Thur)	G			
Sep. 7	at Georgia	G			
Sep. 14	Vanderbilt	G			
Sep. 21					
Sep. 28	at UCF	G			
Oct. 5	Kentucky	G			
Oct. 12	at Arkansas	A			
Oct. 19	at Tennessee	G			
Oct. 26	at Missouri	A			
Nov. 2	Mississippi St (HC)	G			
Nov. 9					
Nov. 16	Florida	G			
Nov. 23	Coastal Carolina	G			
Nov. 30	Clemson	G			

**CAREER PASSING LEADERS**  
1. Todd Ellis 9,953 '86-'89  
2. Steve Taneyhill 8,782 '92-'95  
3. Stephen Garcia 7,597 '08-'11

**CAREER RUSHING LEADERS**  
1. George Rogers 5,204 '77-'80  
2. Brandon Bennett 3,055 '91-'94  
3. Harold Green 3,005 '86-'89

**CAREER RECEIVING LEADERS**  
1. Alshon Jeffrey 3,042 '09-'11  
2. Kenny McKinley 2,781 '05-'08  
3. Sterling Sharpe 2,497 '83, '85-'87

Only 2nd meeting s/'91 as SC went into Chapel Hill in '07 ranked #7 & won 21-15. The Gamecocks have won 13 straight season openers including 5 vs BCS teams.

This is the 8th time in 10Y these 2 have met in game #2. LTH there were 9 lead changes and it was the highest scoring game in their series history. SC had 2 def td's in the win.

Last time here the SC D dominated holding the Commodores to 77 yards and 5 FD. Vandy actually scored first picking off a pass to the SC22 and kicking a 33 yd fg.

**Bonus:** Steve Spurrier is 47-0 all-time vs non-BCS opponents.

South Carolina hosted UCF in 2005 winning the ssn opener 24-15. When scheduled this was the first non-BCS road game for SC since 1997. UCF hosted SEC foe Missouri LY.

LTH SC was off a home loss and took it out on the Wildcats finishing with a 639-96 yard edge and a 32-6 FD edge. The 51 pt win was the largest MOV SC has had vs any SEC opp.

The visitor is just 1-5 in this series incl LY's home win for SC. While they were outFD'd 22-20 in the game South Carolina forced 3 TO's and a SOD plus had a 69 yd IR td.

The Gamecocks lost 14 of 15 from '93-'07 but since have won 4 of 5 and 3 straight. In LY's 3 pt win the SC D forced a fumble at the SC20 with 1:08 left and got an int at the SC38 with :23 left.

SC lost to Missouri in the '05 Independence Bowl but won LY's inaugural SEC game. The Gamecocks pulled away with a 21 pt 2Q as QB Shaw finished with a school rec 20 straight comp.

While South Carolina won only 2 of the first 8 meetings they've now won 6 straight. 2011 was the only meeting in the L5Y. SC went 79/12pl scoring the GW td with 3:50 left.

**Florida:** The higher ranked team in this series has won 7 straight and 19 of the L21.

LTH was the only time ever that SC was ranked and Florida wasn't in their matchup.

SC has played 4 diff FCS tms in the L7Y, all in-state foes. They beat Wofford 24-7 LY.

SC's 4 str wins has matched their longest series win streak ('51-'54). They held CU to 17 or less in all 4.

## WILLIAMS-BRICE STADIUM - Grass Built: 1934 • 80,250 (#20) • LY's Capacity: 99.7%

	2003	2004	2005	2006	2007	2008	2009	2010	2011	2012	10Y Total
<b>STRAIGHT UP</b>	5-7	6-5	7-5	8-5	6-6	7-6	7-6	9-5	11-2	11-2	77-49
Home	5-3	3-3	5-2	3-4	4-3	5-2	6-1	6-1	6-1	7-0	50-20
Away	0-4	3-2	2-2	4-1	2-3	2-3	1-4	3-2	3-1	3-2	23-24
Neutral	0-0	0-0	0-1	1-0	0-0	0-1	0-2	2-0	2-0	1-0	4-5
vs Conf	2-6	4-4	5-3	3-5	3-5	4-4	3-5	5-4	6-2	6-2	41-40
vs Non-Conf	3-1	2-1	2-2	5-0	3-1	3-2	4-1	4-1	5-0	5-0	36-9
<b>ATS</b>	5-7	4-7	6-6	9-3	5-5-1	5-6-1	7-5	7-7	6-6-1	7-4-2	61-56-5
Home Fav	1-3	1-4	2-2	2-0	2-2	3-1	1-2	3-3	4-3	5-2	24-22
Home Dog	2-1	1-0	1-2	1-3	1-1	0-1-1	3-0	1-0	0-0	0-0	10-8-1
Away Fav	0-0	1-1	0-0	3-0	0-1	1-1	0-0	2-1	1-1-1	0-1-1	8-6-2
Away Dog	2-2	1-2	3-1	2-0	2-1-1	1-2	3-2	1-1	0-1	2-1	17-13-1
Neutral	0-0	0-0	0-1	1-0	0-0	0-1	0-1	0-2	1-1	0-0-1	2-6-1
vs Conf	3-5	3-5	5-3	5-3	4-3-1	4-3-1	4-4	4-5	4-3-1	4-3-1	40-37-4
vs Non-Conf	2-2	1-2	1-3	4-0	1-2	1-3	3-1	3-2	2-3	3-1-1	21-19-1
Off SU Win	3-2	2-4	4-3	5-2	3-2	3-4	3-3	3-6	4-5-1	7-1-2	37-32-3
Off SU Loss	2-4	1-3	2-2	3-1	2-2-1	1-2-1	3-2	3-1	2-0	0-2	19-19-2

### 2012 STATISTICAL LEADERS

RUSHING	ATT	GAIN	LOST	NET	TD	AVG	PLAYER	TKL	SKS
Marcus Lattimore	143	673	11	662	11	4.6	Shaq Wilson	86	2.5
Connor Shaw	131	608	173	435	3	3.3	DJ Swearingin	79	0
Kenny Miles	104	395	36	359	2	3.5	Reginald Bowers	59	1
Mike Davis	52	289	14	275	2	5.3	DeVonte Holloman	57	2
Bruce Ellington	5	28	0	28	0	5.6	Jadeveon Clowney	54	13
Dylan Thompson	34	131	108	23	1	0.7	Brison Williams	52	1
PASSING	ATT	COM	PCT	YDS	TD	INT	QBR	QUIN	SMITH
Connor Shaw	228	154	67.5	1956	17	7	158.1	Quinn Smith	47
Dylan Thompson	127	66	52.0	1027	10	2	142.7	Devin Taylor	45
RECEIVING	REC	YDS	AVG	TD	LONG	BYRON	JEANDEAU	CHAZ	JUSTICE
Bruce Ellington	40	600	15.0	7	43	Byron Jerideau	40	2.5	3
Ace Sanders	45	531	11.8	9	36	Kelcy Quarles	38	3.5	4.5
Damiere Byrd	14	366	26.1	3	94	Chaz Sutton	25	5	2
Justice Cunningham	23	324	14.1	0	45	Damarrio Jeffery	24	0	3.5
Rory Anderson	14	271	19.4	5	51	Aldrick Fordham	22	5.5	1
Nick Jones	12	197	16.4	0	70	Akeem Auguste	18	0	2
Kenny Miles	20	190	9.5	0	24	TJ Surratt	14	0.5	2
Marcus Lattimore	26	173	6.7	0	24	JT Gurley	13	0	0
DL Moore	8	139	17.4	2	62	Gerald Dixon Jr	9	0	1
Jerrell Adams	4	90	22.5	1	33	Ahmad Christian	8	0	2
Shaquon Roland	5	80	16.0	1	30	Damiere Byrd	7	0	0
PUNTING	NO	YDS	AVG	FC	NET	BLK	IN20	PUNTER	BYRDS
Tyler Hull	54	2130	39.4	22	36.0(1)	1	12	Ace Sanders	28
KICKING	XP	1-29	30-39	40-49	50+	TLG	LONG	KICKER	BYRDS
Adam Yates	49-49	3-3	5-8	2-4	1-2	11-17	51	Bruce Ellington	18

### 2012 STATS GAME BY GAME

GAME BY GAME										Total	Hush
INT	QBH	ATT	Foe	Off	FD	Att-Yds					
1	2	1		38,393	at Vanderbilt	272	17	47-205			
7	1	2		77,006	East Carolina	528	25	34-131			
4	3	0		77,963	UAB	501	20	31-179			
2	0	5		80,836	Missouri	396	19	39-144			
4	2	0		49,810	at Kentucky	348	20	48-200			
0	0	3		85,199	Georgia	392	20	51-230			
6	3	0		92,734	at LSU	211	14	25-34			
6	1	0		80,833	at Florida	191	17	26-36			
0	0	1		80,250	Tennessee	510	25	46-147			
0	0	1		78,772	Arkansas	383	20	41-104			
1	0	1		79,982	Wofford	293	18	41-171			
2	1	0		84,513	at Clemson	444	26	45-134			
0	0	2		54,527	† Michigan	426	17	17-85			
1	1	0		TOTALS		4895	258	491-1800			
2	0	0		AVERAGES		377	19.8	38-138			
3	2	0		ATTENDANCE	CONF	338	19.0	40-138			
0	2	0		80,001 (#18)	HOME	429	21.0	40-158			
6	0	0		68,477 (#14)	AWAY	315	18.5	35-116			

2008 RESULTS					2009 RESULTS					2010 RESULTS					2011 RESULTS					2012 RESULTS				
SC Rank	Pre- Opponent	Line	Score	Post- Rank	SC Rank	Pre- Opponent	Line	Score	Post- Rank	SC Rank	Pre- Opponent	Line	Score	Post- #22 Rank	SC Rank	Pre #12 Opponent	Line	Score	Post #9 Rank	SC Rank	Pre #9 Opponent	Line	Score	Post #6 Rank
-	NC State	-14	34-0		-	at NC State	+5	7-3		-	Southern Miss	-13'	41-13		#12	† East Carolina	-21	56-37		#9	at Vanderbilt	-6'	17-13	
#24	at Vanderbilt	-9'	17-24		-	at Georgia - #21	+7	37-41		#24	Georgia - #22	-3'	17-6		#12	at Georgia	-3	45-42		#9	East Carolina	-21'	48-10	
-	Georgia - #2	+7	7-14		-	Florida Atlantic	-21	38-16		#13	Furman	-33	38-19		#11	Navy	-16	24-21		#8	UAB	-33'	49-6	
-	Wofford	-32	23-13		-	Mississippi - #4	+4	16-10		#12	at Auburn - #17	+3	27-35		#12	Vanderbilt	-15'	21-3		#7	Missouri	-10'	31-10	
-	UAB	-26	26-13		-	South Carolina St	-37	38-14		#19	Alabama - #1	+7	35-21		#10	Auburn	-10'	13-16		#6	at Kentucky	-21	38-17	
-	at Mississippi	+2	31-24		#25	Kentucky	-9'	28-26		#10	at Kentucky	-5	28-31		#18	Kentucky	-21	54-3		#6	Georgia - #5	-1'	35-7	
-	at Kentucky	-2'	24-17		#22	at Alabama - #2	+18	6-20		#19	at Vanderbilt	-12	21-7		#15	at Mississippi St	-3	14-12		#3	at LSU - #9	+2'	21-23	
-	LSU - #13	+2	17-24		#23	Vanderbilt	-13'	14-10		#17	Tennessee	-17	38-24		#14	at Tennessee	-3'	14-3		#9	at Florida - #3	+3'	11-44	
-	Tennessee	-5	27-6		#21	at Tennessee	+6'	13-31		#18	Arkansas - #17	-4'	20-41		#10	at Arkansas - #8	+5	28-44		#17	Tennessee	-13'	38-35	
-	Arkansas	-12'	34-21		-	at Arkansas	+7	16-33		#17	Troy	-21'	66-14		#15	Florida	-3	17-12		#12	Arkansas	-14	38-20	
#24	at Florida - #3	+21	6-56		-	Florida - #1	+17'	14-24		#22	at Florida - #24	+6	36-24		#14	The Citadel	-39	41-20		#12	Wofford	-31	24-7	
-	at Clemson	+1	14-31		-	Clemson - #15	+3'	34-17		#17	at Clemson	-3	29-7		#14	Clemson - #18	-3	34-13		#13	at Clemson - #12	+3'	27-17	