

# NEBRASKA CORNHUSKERS



RB Spencer Long

## POSITION OUTLOOK FOR 2013

**QUARTERBACKS** - Taylor Martinez, who spent some time at WR in '09, took charge of the QB position in a roller coaster '10 ssn. He got into the Heisman race after running for an NU QB record 241 yds on National TV vs K-St but after a tremendous first 5 gms he was benched vs Texas. Martinez rebounded and set a fresh record for pass yds in a game (23-35-323-5-0 vs Okla St) while becoming the 1st QB in NU hist with 300 pass and 100 rush in a gm. In the first 7 Martinez rushed for 870 (8.7). He was inj'd vs MO and in the final 7 had just 95 (1.5). He threw for 1,631 (59%, 10-7). In '11 Martinez stayed healthier and put up similar numbers (2089, 56%, 13-8, 874 rush). He did have 3 int on 3 consec drives vs Wisc but had just 1 in his L/132 att's. LY Martinez was tutored by QB guru Steve Calhoun in the offseason and was perhaps the most improved QB in the country. Martinez threw for 2,871, moved up to 62.0% (23-12) and rushed for 1,019 yds (5.2, 10 td). Martinez joined Eric Crouch, Jammal Lord and Steve Taylor as the only NU QB's to have 2,000 career rush yds. He became NU's career leader in tl offense topping '01 Heisman winner Crouch. Ron Kellogg (PS#226) played in 4 (4-9) but had there been a long-term inj, true frosh Tommy Armstrong (PS#28) would have played but was able to RS. All 3 looked solid in the spring gm (Kellogg 11-12-14). Martinez should have his best season yet as a senior.

**RUNNING BACKS** - Roy Helu became the first Husker RB to post B2B 1,000 yd seasons since Calvin Jones ('92-'93). He led with 1,147 (5.2) in '09 and 1,245 (6.6) in '10. Rex Burkhead missed 5 and had 346 (4.3) in '09 and 951 (5.5) in '10. Helu (#4DC) left in '11 and Burkhead took command with 1,357 (4.8) and 15 td's. He set a NU rec with 38 carries vs Iowa. The speedy, talented true frosh Ameer Abdullah (PS#95) had 150 (3.6, 870 ret yd) in '11. LY NU was promoting Burkhead for the Heisman but he was banged up (miss 6, 675, 6.9) but had a gutsy effort vs Iowa when he was not supposed to play, even getting 2 FD's at the end to clinch it. Imani Cross (PS#45) did 41 chin-ups and his RB cch said his strength is "unbelievable." Cross, an athletic short ydg back, had 324 (5.9) with 7 td. LY Abdullah came in a "rocked up" 185 lbs (squats 500+). He led with 1,137 (5.0) with 100 in each of his first 5 sts, the longest streak by an NU RB since Lawrence Phillips (11 '94). TY they lose Burkhead (7 st, #6DC CIN) and Braylon Heard (348, 6.7) but add in 2 VHT true frosh. With Burkhead missing over half of LY, I'll call this unit stronger.

**RECEIVERS** - In '11 the Huskers had to replace their #1 rec (516, 13.2) but ret'd #2 Brandon Kinnie (494, 11.2) and #3, TE Kyler Reed (395, 18.0). RFR Kenny Bell, one of the fastest players in the NCAA, took over and led with 461 (14.4) while Kinnie (PS#47JC) and Reed both had 257 (11.7, 17.1). 6'2"

Quincy Enunwa had 293 (14.0). LY 6 of the top 7 were back (lost Kinnie). Bell became just the 4th NU rec with 800 yds (863, 17.3, 8 td) in a season (Johnny Rodgers '71 & '72, Maurice Purify '07, Nate Swift '08). Enunwa was #2 again with 470 (11.2) and Jamal Turner was #3 (417, 13.0). TY they lose HM B10 TE Reed (3 st, 357, 14.9), HM B10 TE Ben Cotton (14 st, 239, 13.3), Tim Marlowe (4 rec) and Steven Osborne (10 rec). Bell ret's and the staff thinks that TE Jake Long could be an NFL prospect, so I'll call this the best Husker receiving corps in years.

**OFFENSIVE LINE** - In '10 NU had their best rushing yrs '02 at 248 ypg (5.5) thanks mostly to 965 rush yds from the QB's. In '11 they had to replace 3 str's and their interior was made up of 3 ex walk-ons (217, 4.6, 21 sk). LY they had to replace a 2nd Tm B10 C (2Y str'), a 2Y starting RT (#7DC) and their LT (13 st) and had 44 car sts back. NU used a 7-man OL rotation which kept them fresher and they improved to 253 ypg (5.4) but with 35 sks (9.3%, 11 in final 2). TY they lose LG Seung Hoon Choi (14 st, 1.5Y str, 400+ bench) and C Justin Jackson (12 st). The number rises to 78 sts back and they return 2 All-B10 ply'rs incl 2nd Tm AA RG Spencer Long. They were using wider blocking splits in spg and Pelini said he was confident with 5 T's and 6 G's. With such good depth, this figures to be the best Husker O-line s/02.

**DEFENSIVE LINE** - With an inexp'd D-line, NU yielded 232 rush ypg (5.2, 13 sk) in '07 (worst in modern history). Pelini's first couple of units made great strides yielding 116 rush ypg (3.6) in '08 and 93 ypg (2.8) in '09. It also helped having 1st Tm AA Ndamukong Suh. Since his departure, the rush D has gotten weaker each of the L3Y. LY they had to replace DT Jared Crick (#4DC) and 2 other DL's (9 st, 35 tkl, 1 sk). They had 7 of their top 10 back so improvement was expected but they slipped to 193 (4.8) but did record 31 sks. DT Baker Steinkuhler missed the B10 Title gm vs UW and NU all'd an astronomical 539. (10.8!) TY they lose 1st Tm B10 DE Eric Martin (12 st, 59 tkl, 8.5 sk, 8 tfl), 2nd Tm B10 NT Steinkuhler (47 tkl, 6.5 tfl), DE/DT Cameron Meredith (14 st, 53 tkl, 5 sk), DT Chase Rome (3 st, 19 tkl) and DE Joseph Carter (18 tkl, 4 tfl). Despite having to replace their top players, I cannot imagine them being as bad statistically in '13 as they add 2 VHT rfr and a PS#5JC.

**LINEBACKERS** - LY NU had to replace #1 tkl'r, Lavonte David (133 tkl, 13 tfl, #2DC) but ret'd 3 of their top 4. David had been a PS#6JC and they tried to recapture that magic with PS#17JC, Zaire Anderson. He brought speed to the unit and st'd Wk 3 but was OFFY (ACL, 4 tkl). The unit had 3 senior str's and naturally those 3 (#1, #4, #9 tkl'rs) depart TY. Will Compton (2nd Tm B10), Alonzo Whaley and Sean Fisher take with them 62 car sts. David Santos (24 tkl) has a large upside and they get back Anderson. This is a lightly exp'd unit but LY they regressed to 27.6 ppg all'd and TY add in 3 VHT true frosh.

**DEFENSIVE BACKS** - In '11 NU had to replace 1st Tm AA Prince Amukamara (#1DC), their FS (#2 tkl'r, #5DC), and 2 others (7 st, 47 tkl). Star CB Alfonso Dennard missed the first 3 (#78 FBS pass D after 3). NU had a difficult time filling the CB slot opposite Dennard with 5 diff players earning sts incl 6'3" former WR Stanley Jean-Baptiste (6'3" 220 Sr) who despite his size has 4.4 spd. Dennard earned the B10 DB POY but NU dropped to #37 in my PDR (53%, 16-10). LY they had to replace 2nd Tm AA CB Dennard (31 tkl, 6 pbu, #7DC), their FS (13 st, 70 tkl) and a NB (3 st, 38 tkl). They added in PS#25JC Mohammed Seisay (12 st Memphis '10). I noted that since they ret'd 3 who st'd 7+ they could move up. Jean-Baptiste took over for an inj'd Josh Mitchell in Wk 7 and in just 5 sts, had 24 tkl, 9 pbu and 2 int. NU finished 12 (47.1%, 18-13). TY they lose 1st Tm B10 S Daimion Stafford (14 st, #2 tkl'r, 4 int, 7 pbu, #7DC TEN), HM B10 FS PJ Smith (14 st, #3 tkl'r, 3 int, 5 pbu), Courtney Osborne (12 tkl, 2 tfl) and Justin Blatchford (12 tkl, 3 pbu). Seisay was slowed by inj's LY (12 gm,

7 tkl) and Charles Jackson (PS#15) is now a soph. They are about equal to LY in terms of exp and add in Aub trans Jonathan Rose (PS#11).

**SPECIAL TEAMS** - In the last 19 yrs NU has ranked in the Top 10 of my ST rankings 8 times. Pelini's first 4 units finished #41, #16, #4 and #13. LY they appeared to be in great shape returning their excellent K/P Brett Maher and dangerous RM Abdullah (763, 29.3 on KR, 107, 7.1 on PR's in '11). Unfortunately, they had a lot of problems fielding punts (5 fmbles). Abdullah's KR stats dropped to 360 (21.2). Maher hit 19-23 fg's (L51) in '11 and 20-27 (L54) LY and his punt avg of 44.5 (38.3 net '11) slipped to 41.8 (35.6 net). They gave up 2 return td's and NU finished at #46. TY they lose their triple threat, Maher (96 KO, 57 TB, #4 FBS) but may have a similar finish.

**COACHES** - Bo Pelini was the DC here in '03 and the interim HC for that year's bowl win. He was Oklahoma's co-DC in '04 and LSU's DC from '05-'07 before returning as HC in '08. Pelini took over after a 5-7 season and has led the Huskers to 9+ wins 5 str times. Tim Beck is in his 6th season here (3rd as OC). John Papuchis is in his 5th ssn here (2nd as DC) although Bo is expected to call the D signals himself.

QB	Ryker Fyfe 6'2" 190 Rfr	FB	Carson Collins 5'10" 220 Rfr	OL	Adam Kucera 6'6" 315 So
QB	Tyson Broekemeier 6'11" 190 So	WR	Lane Hovey 6'4" 205 Rfr	OL	Garret Johns 6'0" 230 Rfr
QB	Evan Williams 5'11" 175 Rfr	WR	Brandon Peilly 6'1" 180 Rfr	CB	Derek Foster 5'11" 190 Jr
QB	Jordan Nelson 5'7" 180 So	WR	Tyler Williams 6'1" 195 Jr	CB	Jay Felici 5'9" 175 Jr
IB	Mural Kuzu 5'11" 200 So	TE	Dennis Silla 6'4" 220 Rfr	CB	Seth Jameson 6'1" 205 Sr

## PHIL'S FORECAST

Nebraska has had a long history of success winning B2B National Titles in '94 and '95 and finishing ranked in the Top Ten 8 of 9 yrs from '93-'01. The Huskers have not finished in the Top 10 since. They went through a regrettable 4 years from '04-'07 when Bill Callahan tried to switch them from their power option rush attack to a pass attack and NU went just 27-22 in that span incl 5-7 in his final year. In Pelini's first year, NU made my Most Improved List despite the fact that they had just 10 ret sts and they did not disappoint going 9-4. The last 4 yrs Pelini has guided the team to #14, #20, #24 and #25 finishes. LY they had 14 ret str's. While Mich and Mich St were pretty much the favorites to win the Legends Div, I went out on a limb and picked the Huskers. I pointed out that 7 of my 9 sets of PR's called for a double digit win season and projected them in the Big Ten Title game. NU had 29 seniors and whipped SM in the opener. They did lose to UCLA 36-30 in Pasadena (outgained 281-106 2H) with RB Burkhead missing the game and Martinez hitting 0-6 in the 4Q. They demolished Ark St and Idaho St by a comb 11-5 in 20. Coming into '12, NU had rallied from a double digit 4Q deficit 4 times in their history but LY led the FBS with four 2H comebacks from a DD deficit. Since '96 only 4 teams have accomplished that ('00 NCST, '05 UCLA, '08 Ark). Their first was a comeback vs Wisc (trailed 27-10) in a 3 pt win. They led OSU 17-7 and 24-21 in the 2Q but lost by 25. They outgained NW 543-301 but trailed 28-16 with 8:31 left before comeback #2. QB Robinson was inj'd for Mich in the 2Q and NU turned a 7-6 game into a 23-9 win. They trailed 24-14 in the 4Q, but Mich St had an IR td called back and NU got comeback win #3. PSU led 20-6 at half but NU got comeback #4, 32-23. They just needed to beat Minn and Iowa to wrap up a Big Ten Title and did although the Iowa gm was closer than expected (263-200 yd edge) in 26 mph winds. In the B10 Title game NU was run over by Wisc yielding 539 yds rush (10.8). They led Georgia 31-23 in the bowl but lost by 14. TY NU has 12 ret sts incl QB Martinez and their top 3 rec's. NU had 3 net close wins LY but on the positive side they were -12 in TO's, had -2 net upsets and their +119.1 ypg was best in the B10. NU's schedule also gets easier as OSU and Wisc drop off and are replaced by Purdue and Illinois. NU has a great shot at getting back to the Big Ten Title game.

## 2013 PROJECTED STARTING LINEUP

OFFENSE	JERSEY # IN RED	2013 PROJECTED STARTING LINEUP
<b>QB 3 TAYLOR MARTINEZ SR.</b>	6-1 210	PS#99.24 st, 3720 (57%, 23-15), 1839 rush (5.3) 2Y. 14 st, 2871 (62%, 23-12), 1019 rush (5.2), 1st Tm B10 LY. 4 Tommy Armstrong (6'1" 220 Rfr) PS#28. Johnny Stanton is PS#33.
<b>IB 8 AMEER ABDULLAH JR.</b>	5-9 190	PS#95. 13 gm, 150 (3.6) true. 7 st, 14 gm, 1137 (5.0), 2nd Tm B10 LY.
<b>32 Imani Cross (6'1" 225 So)</b>	PS#45. 14 gm, 324 (5.9) true. King Frazier (6'0" 220 Rfr) PS#139. Graham Nability (6'0" 210 Rfr).	
<b>WR 10 JAMAL TURNER JR.</b>	6-1 185	PS#11. 243 (16.2) true. 4 st, 417 (13.0) LY. 1 Jordan Westerkamp (6'0" 200 Rfr) PS#36. FB Mike Marrow (6'2" 250 Sr) 2 st LY. CJ Zimmerman (6'0" 230 Sr) 1 st LY. Andy Janovich (6'1" 225 So) 2 st LY.
<b>WR 80 KENNY BELL JR.</b>	6-1 185	PS#164. 11 st, 461 (14.4) rfr. 14 st, 863 (17.3), 1st Tm B10 LY.
<b>7 Taariq Allen (6'3" 195 So)</b>	PS#133. 8 gm rfr. 48 Sam Burch (6'3" 195 So) 3 gm rfr. 27 Sam Foltz (6'1" 200 Rfr).	
<b>WR 18 QUINCY ENUNWA SR.</b>	6-2 225	7 st, 303 (13.8) 2Y. 14 st, 470 (11.2) LY. 2 Alonzo Moore (6'2" 185 Rfr) PS#180. 88 Tyler Evans (6'1" 195 Jr) PS#135. 6 gm, 27 (13.5) 2Y. 30 Richard Wynne (5'9" 180 So) PS#168.
<b>TE 41 Jake Long (6'3" 240 So)</b>	6-4 240	2 st, 14 gm 2Y. 2 st, 14 gm, 55 (9.2) LY. 84 Sam Cotton (6'4" 235 Rfr) PS#50. 86 David Sutton (6'3" 240 So). 98 Eddie Ridder (6'6" 225 So). Jared Blum (6'4" 240 Rfr). Trey Foster (6'0" 240 Rfr).
<b>C 62 Cole Pensick Sr.</b>	6-2 275	PS#301. 3 gm (inj) rfr. 5 gm LY. 55 Paul Thurston (6'5" 280 Rfr) PS#29.
<b>56 Mark Pelini (6'0" 295 Jr) DNP rfr.</b>	1 st, 7 gm LY. 67 Scott Criss (6'3" 275 Sr). LS 97 Joseph Rothman (6'0" 220 So).	
<b>RG 61 SPENCER LONG SR.</b>	6-4 315	DNP Rfr. 13 st RG, 2nd Tm B10 '11. 14 st RG, 2nd Tm AA LY. 74 Mike Moudy (6'5" 300 Jr) PS#68. DNP Rfr. 3 gm LY. 78 Givens Price (6'4" 295 So) PS#260. 59 Will Sailors (6'3" 270 So).
<b>LG 66 Jake Cotton Jr.</b>	6-6 305	PS#301. 3 gm (inj) rfr. 5 gm LY. 65 Rynne Reeves (6'3" 295 So).
<b>PS#21. 4 gm rfr.</b>	Chongo Kondolo PS#87JC. 58 Corey Whitaker (6'4" 275 Rfr). 75 Chris Long (6'4" 280 So).	
<b>RT 71 JEREMIAH SINGLO SR.</b>	6-6 310	14 st LT LY. 12 gm '11. 14 st, 2nd Tm B10 LY. 63 Andrew Rodriguez (6'6" 330 Sr) PS#13. 5 gm true. 7 st LG '11. 1 st, 14 gm LY. 57 Zach Sterup (6'8" 315 So) PS#41. Brandon Chapek (6'5" 305 Sr).
<b>LD 76 BRENT QVALE SR.</b>	6-7 315	PS#73. DNP Rfr. 11 gm '11. 13 st LT LY. Matt Finnan PS#23JC.
<b>77 David Knevel PS#79. IFS. 73 Sam Hahn (6'6" 295 Rfr).</b>	Dylan Utter (6'1" 275 Rfr). Robby Painter (6'4" 275 Rfr).	
<b>K 37 Mauro Bondi So.</b>	6-0 205	PS#43. 1-1 PAT. 4 KO. 4 gm true. RS LY. Pat Smith (5'11" 185 Sr). 18-23 fg, L/46, 3Y at W III. 95 Spencer Lindsay (5'10" 195 Rfr) PS#50. Grant Schumacher (5'9" 155 Fr) PS#170.

DEFENSE	JERSEY # IN RED	2013 PROJECTED STARTING LINEUP
<b>DE 9 JASON ANKRAH SR.</b>	6-4 265	PS#107. 2 tkl rfr. 9 st, 17 tkl, 3 tfl '11. 9 st DE/DT, 14 gm, 26 tkl, 2 sk, 4 tfl LY. 94 Avery Moss (6'2" 270 Rfr) PS#126. 3 gm, MedRS LY. 91 Donovan Vestal (6'5" 275 Jr) PS#172. AJ Natter PS#73.
<b>DT 53 Thad Randle Sr.</b>	6-1 290	PS#102. 7 tkl rfr. 7 gm, 8 tkl, OFY '11. 6 st, 13 gm, 21 tkl LY. 96 Aaron Curry (6'1" 280 So). 4 gm 3 tkl true. 69 Brodrick Nickens (6'5" 310 Sr). From Ok. 99 Jay Guy (6'1" 290 Jr) PS#81. 4 gm 2Y.
<b>DT 98 Vincent Valentine Rfr.</b>	6-3 325	PS#52. 92 Kevin Williams (6'2" 275 So) PS#68. 5 gm (inj), 4 tkl rfr.
<b>48 Tobo Okuyemi (6'2" 280 Jr) PS#103.</b>	DNP Rfr. 2 gm LY. Malik Collins PS#112. Steve Graeber (6'1" 255 Fr).	
<b>DE 90 Greg McMillen Rfr.</b>	6-3 285	PS#36. Randy Gregory (6'6" 230 Jr) PS#32. 47 Walker Ashburn (6'2" 260 Jr) PS#104. RS LY. DNP '11. 2 gm, 2 tkl LY. 95 Jack Gangwish (6'2" 245 So) DNP Rfr. 88 Ross Dzuris (6'3" 245 Fr).
<b>WLB 13 Zaire Anderson Jr.</b>	5-11 220	PS#17JC. 1 st, MedRS LY. Michael Rose (5'11" 230 Rfr) PS#47. 40 Max Pirman (6'5" 230 So) PS#71. Austin Williams (6'0" 205 Jr) DNP Rfr. 13 gm, 4 tkl LY. Colby Starkebaum (6'1" 210 Sr).
<b>MLB 41 David Santos So.</b>	6-0 225	PS#64. 1 st, 13 gm, 24 tkl, 2 tfl Rfr. Courtney Love PS#40. IFS.
<b>43 Trevor Roach (6'2" 230 Jr) 5 gm 7 tkl.</b>	2 tfl Rfr. 5 gm, 5 tkl LY. Josh Banderas PS#29. Mitch McCann (6'0" 220 Rfr).	
<b>BLB 33 Jared Afalava Rfr.</b>	6-3 230	PS#65. Thomas Brown (6'2" 220 Rfr) PS#104. Marcus Newby (6'1" 210 Fr) PS#38. 56 Brad Simpson (6'0" 215 Rfr). Jack Fordon (6'2" 220 Rfr) PS#473. Chris Weber (6'3" 205 Fr).
<b>CB 17 CIANTE EVANS SR.</b>	5-11 190	PS#129. 8 st, 42 tkl 2Y. 12 st, 14 gm, 56 tkl, 9 pd, 3rd Tm B10 LY. 5 Josh Mitchell (5'11" 160 Jr) PS#294. 1 st, 5 tkl Rfr. 8 st, 13 gm, 29 tkl, 6 pd LY. Mohammed Seisay (6'2" 200 Rfr) PS#25JC. 7 tkl LY.
<b>CB 11 ANDREW GREEN SR.</b>	6-0 195	PS#143. 1 gm LY. 5 gm Rfr. 10 st, 48 tkl, 9 pd '11. 12 st, 13 gm, 50 tkl LY. OFS.
<b>14 Jonathan Rose (6'1" 190 So) PS#11.</b>	2 tkl Aub, RS LY. 16 Stanley Jean-Baptiste JC. 6 st, 23 gm, 33 tkl here LY.	
<b>SS 6 COREY COOPER JR.</b>	6-1 210	PS#21. 1 st, 11 gm, 9 tkl Rfr. 3 st, 14 gm, 17 tkl LY. DJ Singleton PS#36. '12 IFS. 19 Wil Richards (5'11" 190 Sr) PS#24. 10 tkl 2Y. Anthony Ridder (6'2" 200 So). Yusuf Wade (5'0" 195 Jr).
<b>FS 1 Harvey Jackson Jr.</b>	6-2 210	PS#165. 12 gm, 8 tkl Rfr. 1 st, 13 gm, 13 tkl LY. 27 Charles Jackson (5'11" 175 So) PS#15. 13 gm, 11 tkl true. 23 Daniel Davie (6'1" 185 So) PS#53. 13 gm, 7 tkl Rfr. 18 LeRoy Alexander (6'0" 185 Rfr).
<b>P 27 Sam Foltz Rfr.</b>	6-1 200	P/W/R. 5 punts (44.2) in spg gm '13. 37 Mauro Bondi (6'0" 205 So) PS#43. 4 KO, 0 TB, 1-1 PAT, 4 gm as true. RS LY. Jordan Bellar (6'0" 165 Fr) PS#170. Avg'd 45.1 ypp as Sr in HS.



# NEBRASKA CORNHUSKERS

Lincoln, Nebraska

WEATHER ZIP: 68588

Enrollment: 19,345 (#70)

## BO PELINI

PLAYING EXP: FS at Ohio St '87-'90  
PRIOR HC EXP: '03 Bowl Game

6<sup>TH</sup> Year Here / 6<sup>TH</sup> Overall

### 2012 RECORDS

**10-4**  
CONF: 7-1 (\*1 Legends!)

### HERE/OVERALL

**Record:** 49-20  
**Bowls:** 3-3  
**Home:** 30-6  
**Away:** 16-8  
**Neutral:** 3-6  
**Vs Conf:** 29-14  
**Vs Top 10:** 2-8  
**Vs Top 25:** 8-12  
**Vs BCS:** 5-6  
**Off Bye:** 7-4  
**Off Loss:** 12-5  
**BIG TEN - LEGENDS** 363 812 28-10

**2013 RET STARTERS:**  
**OFF: 8\*** **DEF: 4**

**LETTERMEN (O/D/S/T)**

**RET: 43** (24,18,1)

**LOST: 32** (14,16,2)

Date	Opponent	Turf	Line	Final Score		W	L
				NU	Opp		
Aug. 31	Wyoming	A					
Sep. 7	Southern Miss	A					
Sep. 14	UCLA	A					
Sep. 21	South Dakota St	A					
Sep. 28							
Oct. 5	Illinois (HC)	A					
Oct. 12	at Purdue	G					
Oct. 19							
Oct. 26	at Minnesota	A					
Nov. 2	Northwestern	A					
Nov. 9	at Michigan	A					
Nov. 16	Michigan St	A					
Nov. 23	at Penn St	G					
Nov. 29	Iowa (Fri)	A					

**CAREER PASSING LEADERS**  
1. Taylor Martinez 6,591 '10-'12 1. Mike Rozier 4,780 '81-'83  
2. Zac Taylor 5,860 '05-'06 2. Ahman Green 3,880 '95-'97  
3. Joe Ganz 5,125 '06-'08 3. Eric Crouch 3,434 '98-'01 3. Terrence Nunn 1,762 '04-'07

**CAREER RUSHING LEADERS**  
1. Johnny Rodgers 2,479 '70-'72  
2. Nate Swift 2,476 '05-'08  
3. Eric Crouch 3,434 '98-'01

**CAREER RECEIVING LEADERS**  
1. Johnny Rodgers 2,479 '70-'72  
2. Nate Swift 2,476 '05-'08  
3. Terrence Nunn 1,762 '04-'07

Last home opener Nebraska dropped was in '85, a 17-13 loss to #17 FSU (27-0 since). NU is 6-0 vs Wyoming. In the L/gm ('11) NU only led 14-7 at HT but pulled away w/17 str pts into the 4Q.

NU is 3-1 vs SM. LY in the ssn opener, the gm was tied 14-14 early 2Q before NU scored 28 of the next 31 pts. Into '13, NU is 46-3 '96 hosting non-conf opp's incl 12 str wins by an avg 32 ppg.

Nebraska is 6-2 vs UCLA since 1973 (losses in Pasadena in '88 & LY). LY's gm was tied 27-27 into the 4Q than NU missed a 37 yd fg, all'd a SAF, punted & tossed an int their next 4 drives.

NU has held their L/5 FCS opp to 7 pts or less. NU is 2-0 vs SDSU incl the L/gm in '10, 17-3. NU held SDSU to 4pl or less on 9 of 13 drives. SDSU went 9-4 LY making it to the 2nd round of the FCS playoffs.

NU is 7-2-1 vs the Illini with the last series loss in 1924 but the L/meeting was in 1986. Nebraska is 7-1 hosting Big 10 opp's since joining the league in 2011 (only loss to NW '11, 28-25).

This is just the 2nd all-time meeting as the only prior gm took place in West Lafayette in 1958, Cornhuskers were shutout 28-0. NU is 12-4 L4Y on the conference road (5-3 vs Big 10 foes).

**Minnesota:** LTH NU rolled to a 34-0 lead scoring on all five 1H poss. NU hasn't lost at Minnesota since 1954, 10 straight winning trips by 28 ppg.

LY down 28-16 mid-4Q NU went 80/10pl & 76/6pl (GW td w/2:08, 2ptng). NW missed a 53 yd fg w/1:10.

LTH down 31-17 NU was called for roughing the P & instead of having the ball at the M10, UM went 86/10pl for at wd w/10:14 left.

LY NU trailed 24-14 early 4Q but down 3 w/1:20 went 80/9pl getting a GW 5 yd td run w/.06.

LTH NU had a 17-0 3Q lead & held on. It was the highest ranked foe they had beaten away '99.

LY NU trailed 7-3 at HT but limited UI to just 70 2H yds (2.6 ypp). NU is 21-4 in home finales, 8 str wins by 20 ppg.

## MEMORIAL STADIUM - FieldTurf

Built: 1923 - 81,067 (#17) - LY's Capacity: 105.5%

	2003	2004	2005	2006	2007	2008	2009	2010	2011	2012	10Y Total
<b>STRAIGHT UP</b>	10-3	5-6	8-4	9-5	5-7	9-4	10-4	10-4	9-4	10-4	85-45
Home	6-1	4-2	5-2	6-1	4-3	6-2	5-2	6-1	6-1	7-0	55-15
Away	3-2	1-4	2-2	3-2	1-4	2-2	4-1	4-1	3-2	3-2	26-22
Neutral	1-0	0-0	1-0	0-2	0-0	1-0	1-1	0-2	0-1	0-2	4-8
vs Conf	5-3	3-5	4-4	6-3	2-6	5-3	6-3	6-3	5-3	7-2	49-35
vs Non-Conf	5-0	2-1	4-0	3-2	3-1	4-1	4-1	4-1	4-1	3-2	36-10
<b>ATS</b>	8-5	4-6	6-5	7-5	3-9	7-6	9-5	7-6	4-8	7-7	62-62-2
Home Fav	4-2	1-3	2-3	4-1	1-4	3-4	3-3	3-3	2-5	6-1	29-29
Home Dog	0-1	1-0	1-0	1-0	1-1	0-1	1-0	0-0	0-0	0-0	5-3
Away Fav	3-1	1-1	1-1	2-1	1-0	2-0	2-2	3-2	2-0	1-3	16-12-2
Away Dog	0-1	1-2	1-1	0-1	1-3	1-1	1-0	0-2	0-1	0-1	5-12
Neutral	1-0	0-0	1-0	0-2	0-0	1-0	2-0	1-1	0-1	0-2	6-6
vs Conf	5-3	3-5	4-4	5-3	2-6	4-4	4-5	5-4	3-4	4-5	39-43-2
vs Non-Conf	3-2	1-1	2-1	2-2	1-3	3-2	5-0	2-2	1-4	3-2	23-19
Off SU Win	4-5	0-5	5-2	4-3	0-5	3-5	6-3	4-5	3-6	5-5	34-44-1
Off SU Loss	3-0	4-1	1-3	2-2	2-4	3-1	2-2	2-1	1-1	1-2	21-17-1



**SIGNEES 13 WHT - 13 HT - 3 IFS**

**RET OFF TOTAL OFF OFF PASS AVG OFF SKS TOTAL**  
STS PTS OFF RUSH YPC PASS % PLAY YPP VS TURN

7\* 34.8 461 253 5.4 207 61.6 6.2 13.2 35 -12 2012

5\* 29.2 380 217 4.6 163 56.0 5.5 13.0 21 -1 2011

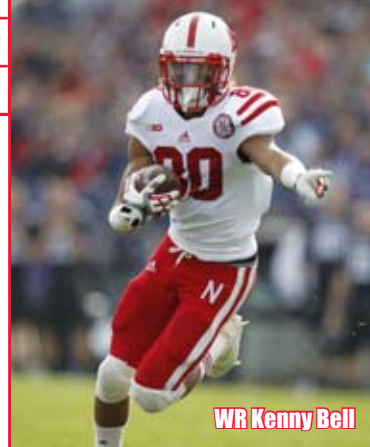
7\* 30.9 398 248 5.5 151 57.8 6.1 12.9 29 -1 2010

6 25.1 323 147 4.0 176 57.7 5.2 12.8 19 +5 2009

5 35.4 451 170 4.5 281 68.1 6.4 12.7 21 -11 2008

6 33.4 468 144 4.2 324 61.5 6.3 14.0 18 -17 2007

8\* 30.6 415 171 4.3 244 59.4 6.0 13.6 30 0 2006



WR Kenny Bell

## LAST 5 BOWL GAMES

NEBRASKA'S ALL-TIME BOWL RECORD 24-25

YR	BOWL/TM	RK	LINE	OPPONENT	SCORE
08	Gator		+2	Clemson	26-21
09	Holiday - #20		-2	Arizona - #22	33-0
10	Holiday - #17		-14	Washington	7-19
11	Capital One - #21	+2		South Carolina - #10	13-30
12	Capital One - #23	+8		Georgia - #6	31-45

## 2012 STATISTICAL LEADERS

RUSHING	ATT	GAIN	LOST	NET	TD	AVG	PLAYER	TKL	SKS	TFL	PBU	INT	OH
Ameer Abdullah	226	1193	56	1137	8	5.0	Will Compton	110	3	2.5	7	1	3
Taylor Martinez	195	1317	298	1019	10	5.2	Daimion Stafford	96	1	2.5	7	4	0
Rex Burkhead	98	685	10	675	5	6.9	FJ Smith	86	1.5	4.5	3	1	1
Braylon Heard	52	357	9	348	3	6.7	Alonzo Whaley	65	1	2	1	1	1
Imani Cross	55	329	5	324	7	5.9	Eric Martin	59	8.5	8	1	0	13
Mike Mrow	10	31	1	30	0	3.0	Clarie Evans	56	2	1	8	1	4
Ron Kellogg	2	2	0	2	0	1.0	Cameron Meredith	53	5	1	0	0	3
Taylor Martinez	368	228	62.0	267	23	12.1	Andrew Green	50	1	1.5	3	0	1
Ron Kellogg	9	4	44.4	22	1	7.9	Sean Fisher	48	0	2	1	0	1
RECEIVING	REC	YDS	AVG	TD	LONG	PLAYER	TKL	SKS	TFL	PBU	INT <td>OH</td>	OH	
Kenny Bell	50	863	17.3	8	74	Baker Steinkuhler	29	1	1	5	1	0	
Quincy Enunwa	42	470	11.2	1	35	Josh Mitchell	26	2	4	1	0	3	
Jamal Turner	32	417	13.0	3	36	Stanley Jean-Baptiste	24	0	2	0	0	0	
Kyle Reed	24	357	14.9	2	56	Thaddeus Randle	21	0	1	0	0	2	
Ben Cotton	18	239	13.3	2	56	Chase Rome	19	0	0.5	0	0	1	
Ameer Abdullah	24	178	7.4	2	26	Joseph Carter	18	1	3	1	0	0	
Rex Burkhead	11	92	8.4	2	25	Corey Cooper	17	0.5	1	0	0	0	
Steven Osborne	10	91	9.1	2	29	Harvey Jackson	13	0	0	0	0	1	
Jake Long	6	55	9.2	1	24	Courtney Osborne	12	0	2	1	0	0	
Tim Marlowe	4	54	13.5	0	16	NO YDS AVG TD LONG	NO YDS AVG TD LONG						
PUNTING	NO	YDS	AVG	FC	NET	BLK	NO	YDS	AVG	TD	LONG		
Brett Maher	61	2552	41.8	10	35.6	1	18	1360	21.2	0	83		
KICKING	XP	1-29	30-39	40-49	50+	TTL	LONG	NO	YDS	AVG	TD		
Brett Maher	59-59	6-6	7-9	4-7	3-5	20-27	54	14	325	23.2	0	47	

## 2012 STATS GAME BY GAME

ATT	Foe	Total	FD	Rush	Yds	Avg	Pass	Att	Yds	Sks	vs
85,425	Southern Miss	632	33	45-278	6.2	26-34	354	1	260	20	47-185
71,530	at UCLA	439	20	36-260	7.2	17-31	179	2	653	26	56-344
85,290	Arkansas St	527	26	59-347	5.9	13-14	180	2	286	17	37-148
84,923	Idaho St	569	26	52-385	7.4	12-18	184	2	210	14	29-31
85,962	Wisconsin	440	24	46-259	5.6	17-29	181	1	295	17	41-56
106,102	at Ohio St	437	21	46-223	4.8	15-25	214	4	498	19	48-371
47,330	at Northwestern	543	26	44-201	4.6	27-39	342	3	301	14	38-180
86,160	Michigan	326	20	41-160	3.9	14-24	166	1	188	18	37-95
73,522	at Michigan St	473	23	40-313	7.8	16-36	160	2	361	19	43-238
85,527	Penn St	438	21	57-267	4.7	12-20	171	2	391	18	34-151
85,330	Minnesota	444	25	47-133	2.8	22-33	311	2	177	11	29-37
69,805	at Iowa	263	16	53-200	3.8	8-14	63	2	200	13	39-108
41,260	† Wisconsin	477	23	44-282	6.4	18-34	195	6	640	24	50-339
59,712	† Georgia	443	26	52-239	4.6	16-27	204	5	589	23	38-162

## OFFENSE - LAST 7 YEARS

RET	DEF	TOTAL	DEF	DEF	DEF	DEF	PASS	AVG	DEF	SKS	TOTAL
STS	PTS	OFF	RUSH	YPC	PASS	%	PLAY	YPP	VS	TURN	
7*	34.8	461	253	5.4	207	61.6	6.2	13.2	35	-12	2012
5*	29.2	380	217	4.6	163	56.0	5.5	13.0	21	-1	2011
7*	30.9	398	248	5.5	151	57.8	6.1	12.9	29	-1	2010
6	25.1	323	147	4.0	176	57.7	5.2	12.8	19	+5	2009
5	35.4	451	170	4.5	281	68.1	6.4	12.7	21	-11	2008
6	33.4	468	144	4.2	324	61.5	6.3	14.0	18	-17	2007
8*	30.6	415	171	4.3	244	59.4	6.0	13.6	30	0	2006

## DEFENSE

Total	Rush	Yds	Avg	Pass	Att	Yds	Sks	vs
260	20	47-185	3.9	7-19	75	3	372	+1
653	26	56-344	6.1	22-38	309	3		