

NOTRE DAME FIGHTING IRISH

TE Ben Koyack



POSITION OUTLOOK FOR 2014

QUARTERBACKS - In '10 Tommy Rees (PS#49) hit 33-54 vs Tulsa and became the first ND frosh to have 4 td's in a game. Rees was 4-0 as the starting QB (1106, 61%, 12-8). In '11 they added the more athletic Kelly recruits, rFr Andrew Hendrix (PS#12) and true frosh Everett Golson (PS#20). Rees threw for 2,871 (66%, 20-14) while Hendrix played in 5 (249, 49%, 1-2). In '12 Rees was susp for the opener and Golson won his first 10 sts (2nd best ND history). Hendrix had just 7 att's. Kelly played the QB position perfectly using the vet Rees during crunch time. Golson improved weekly and threw for 2,405 (59%, 12-6, 298 rush) while Rees threw for 436 (58%, 2-2). LY in late-May (after the mag was published) Golson was susp (Acad) for the year. Rees' 969 pass yds in the 1st 3 wks were the most by any QB vs FBS sts. In the 9 wins, Rees had a 19-4 ratio while in the 4 losses he had an 8-9 ratio. Hendrix struggled (2-14-56) particularly in the 2H of the USC gm (Rees inj'd). Malik Zaire (PS#15) RS. While he won't be remembered as one of the most talented ND QB's, Rees (3257, 54.1%, 27-13) leaves as the #3 career passer. TY Golson battled rFr Zaire in the spring and they also add in VHT True DeShone Kizer (PS#13). With the return of a heavier (+20 lbs) and more mature Golson who spent much of LY with QB guru George Whitfield, I look for ND's numbers to be the best in the Kelly era.

RUNNING BACKS - In '11 Cierre Wood (1102, 5.1) became the 10th Irish 1,000 yd rusher and the first s/o6. (Darius Walker). In '12 Theo Riddick who had played both RB and WR in his career led with 917 (4.8, 370 rec) while Wood was #2 (742, 6.5). George Atkinson III (fastest tm) had 915 KR yds (26.1) but just 27 rush yds as a true. In '12 he improved to 361 (7.1). LY they lost both Riddick and Wood and I expected them to be down a few notches. Atkinson and USC trans Amir Carlisle (PS#13) topped the '13 depth chart. Atkinson led the 1st 2 w/132 (6.9). The only non-VHT was Cam McDaniel (PS#63) who Kelly compared to Danny Woodhead. He finished #1 w/705 (4.6). True frosh Greg Bryant (PS#6) played in just 3 (inj) and RS while the other VHT true frosh Tarean Folston came on strong late (291 last 3) and finished #3 w/470 (5.3). TY they lose Atkinson (#2, 4 st, 555, 6.0) while Carlisle moves to WR. With 2 of the top 3 back this is an improved unit.

RECEIVERS - The Irish have had some elite receivers in recent yrs led by '09 Biletnikoff winner Golden Tate and their all-time leading rec Michael Floyd (#1 DC). The Irish have become "TE U" as they have had 5 st starting TE's selected in the 1st or 2nd Rnd. In '12 TE Tyler Eifert led with 685 (13.7) and became ND's first ever John Mackey Award winner. TJ Jones (PS#20) was #2 with 649 (13.0) while DaVaris Daniels (PS#15) was #3 (490, 15.8) despite just 3 sts. LY they lost Eifert (#1 DC) but added in 4 true frosh incl 6'5" Corey Robinson (son of NBA HOF David). Jones led w/1,108 (15.8) and had a streak of 7 str

gms w/a td (2nd all-time ND, Jeff Samardzija '05). Daniels was #2 w/745 (15.2) while Troy Niklas was #3 (498, 15.6). TY Jones (7 st, #6DC DET) and Niklas (13 st, #2DC ARZ) depart. Torii Hunter (PS#36, father is 5-time MLB All-Star) broke his leg as a SR in HS and RS LY. He is a player to watch TY. They also add in Carlisle from RB. Despite losing over 50% of the units yds (lost #1, #3) they remain a solid group.

OFFENSIVE LINE - ND has not had a 1st Tm AA OL in 11 yrs (C Jeff Faine). The Irish OL had shown improvement in their rush ypc 5 str yrs heading into LY going from a low of 2.1 in '07 to 3.3, 3.8, 4.0, 4.8 and 4.9. In '12 they had 65 car sts back and their 189 ypg rush was the best s/'00 (18 sk, 4.6%). LY they lost a 3rd Tm AA C (3Y str) and RG (13 st) but did return 2nd Tm AA LT Zack Martin and 2Y st/g LG Chris Watt. While their car sts rose to 78, their streak ended avg just 151 ypg (4.5) but all'd just 8 sks (1.9%, #3). Golson & Hendrix had rushed for 339 net in '12 and Rees & Hendrix comb for -30 which accounts for the drop. The Martin's (Zack and Nick) became the first brothers to start on the OL for ND s/the Huffman's in '78 (Dave and Tim). The unit did suffer some inj as Nick Martin was OFY after 11 sts LY and RG Christian Lombard (13 st RT '12) was OFY after 7 sts. Martin broke Sam Young's ('06-'09) schl rec of 50 car sts w/52. TY they lose 4th Tm AA LT Martin (bowl MVP, #1DC DAL) and 2x 1st Tm Ind LG Watt (11 st, 3Y str, #3DC SD). TY they have 3 str's back (car sts drop to 54) but with Golson back they could improve their rush numbers.

DEFENSIVE LINE - ND's rush D bottomed out in '09 allowing 170 ypg (4.8, 19 sk). The Irish showed improvement in each of the next 3 yrs. In '12 they had to replace 2 DL (comb 15 sts) and allowed 106 ypg (3.5 rush, best s/'04) with their 34 sks the best s/'03. 2nd Tm AA Stephon Tuitt had 12 sks while 3rd Tm AA Louis Nix led with 50 tkls. LY they appeared to have 5 of the top 6 back but their top bkt, Tony Springmann (PS#55) was OFY (knee) in August. Nix (8 st, no sks) and Tuitt (13 st, 7.5 sk) were banged up most of the year. The rush numbers slipped to 168 ypg (4.2, just 21 sks). TY Tuitt (#6 tklr, #2DC PIT) & Nix (27 tkl, 2 tfl, #3DC HOU) both left early for the NFL while Kona Schwenke (7 st, 23 tkl) also departs. In the 2 deep LY was soph Sheldon Day (PS#23), rFr Jarron Jones (PS#20) and true frosh Isaac Rochell (PS#23). While LY's numbers were disappointing, TY's D-line loses it's top 2 players (both '12 AA's).

LINEBACKERS - In '12 they had 5 of the top 6 back (#1, #6, #10, #13 tkl's). Manti Te'o finished 2nd in the Heisman voting. LY Te'o moved on (#2DC) and OLB Danny Spond (PS#32) had his career end (migraines). MLB Jarrett Grace became the vocal leader of the front 7 but then broke his leg and was OFY (41 tkl, 7 gm). ND's D went from allowing 12.8 ypg to 22.4 despite the addition of PS#1 true frosh Jaylon Smith (#3 tkl'r, 6.5 tfl). TY they lose OLB Prince Shembo (13 st, #8 tkl'r, 5.5 sk, #4DC ATL), Carlo Calabrese (13 st, #2 tkl'r, 5.5 tfl) and Dan Fox (10 st, #1 tkl'r, 5 tfl). Smith is now a soph and Grace returns. Despite being less exp'd, they should improve upon '13's numbers.

DEFENSIVE BACKS - In '11, ND had 7 of their top 8 back and surprisingly only finished #73 in my PDR (60%, 23-8). In '12 they had to replace 3 str's (#1 and #5 DC). They then lost '11's #7 tkl'r to injury. KeiVarae Russell (PS#18) became the first ever ND true frosh CB to start an opener. They moved in a pair of WR's in Bennett Jackson to CB in '11 and Matthias Farley to S. Having a great front 7 helped, but it was still surprising to see ND finish #18 (60%, 11-16). LY they had to replace #6 and #7DC's and 2 bkps. The Irish's sack total dropped to 21 and despite 3 str's back, they dropped to #58 (58.8%, 19-13). Eilar Hardy (PS#34) had just 1 tkl in the first 6 but got 2 sts at S (24 tkl LY 5 gm). TY they lose CB Jackson (#4 tkl'r, 2 int, 3 pbu, #6DC NYG) and Lo Wood (10 tkl) transferred. Seven of the top 8 are back, they add in Florida transfer Cody Riggs (11 st '13) and I look for a good sized climb in my PDR.

SPECIAL TEAMS - Brian Kelly's ST units at Cincy were #21, #1 and #8. In '12 his ND squad was #74. LY stg WR TJ Jones volunteered to be the PR to improve the woeful unit and avg 7.6 while KR George Atkinson improved his avg to 25.2 (20.0 in '12). PS#1 Kyle Brindza handled all 3 K's duties as he had 35 TB on 75 KO, hit 20-26 fg (incl ND rec 53 ydr vs ASU) and avg'd 41.1 on punts (tm net 34.7). ND was #70. Jones and Atkinson depart but Brindza (ND record 4 car FG of 50+) is one of the best in the country.

COACHES - Brian Kelly's 37 wins in his first 4Y here ties Lou Holtz and Dan Devine for the most ever. Kelly led Cincinnati ('07-'09) to B2B BCS bowls, C Mich ('04-'06) to their 1st bowl in 12Y and Grand Valley St ('91-'03) to a pair of DII Nat'l Champ. He must replace both coor that now are HC's at UMass & Miami, Oh. The new OC is Mike Denbrock who was a TE cch here under Ty Willingham and ret'd in '10. New DC Brian VanGorder spent LY as the Jets LB cch. In '12 he was Aub's DC and the previous 5Y was at ATL Falcons cch (DC L4). VanGorder was also a HC at GSthrn ('06) and Wayne St ('92-'94) and DC at UGA ('01-'04).

ALSO ON ROSTER:			
RB Tyler Piantz 5'8" 230 Sr	TE Luke Hamel 6'5" 210 Jr	DL Patrick Mazza 6'7" 245 So	LB Austin Larkin 6'3" 240 Jr
WR Eric Les 5'9" 180 Jr	TE Ben Suttman 6'2" 210 So	DB Jesse Bongiovanni 5'10" 183 Jr	DB Ernie Soto 5'9" 197 Sr
WR Josh Anderson 5'9" 198 Jr	LS Hunter Smith 6'3" 204 So	DB Eamon McOsker 6'0" 198 Jr	DB Tyler Price 6'0" 205 So
WR Omar Hunter 5'8" 175 Jr	DL Scott Kinsley 6'4" 240 Sr		
WR Cam Bryan 6'2" 205 Sr	DL Marquis Dickerson 6'2" 280 Jr		

PHIL'S FORECAST

In Charlie Weiss' first year, he inherited 10 ret str's on offense and led the Irish to a BCS bowl (Fiesta). In '06 the Irish opened at #2 and got to 10-1 but then lost to #3 USC by 20 and to #4 LSU by 27 in the bowl. In Weiss' final 3 seasons, ND was just 16-21 incl their disastrous 3-9 year ('07) when they set many records for futility. Brian Kelly had exceeded my expectations all 3 yrs at CM and all 3 yrs at Cincy and I thought he stepped into a good situation in '10, but ND was not ranked all yr and finished 8-5. In '11 they opened the season #16 but after a bowl loss to Fla St, finished NR a 5th str yr (32-31 5Y span). In '12, I called for the most wins here s/'06. ND, of course, overachieved everyone's expectations getting to the National Champ game where they were throttled by Alabama. I pointed out LY that they had benefitted from 5 net close wins, had a def ypg of 23.9, were +8 in TO's and the Stock Market Indicator also pointed down. After my magazine went to press, they lost QB Golson and had just 12 ret str's. They only won 28-6 vs Temple. At night vs Mich in the Big House they were down 27-13 at half and lost 41-30. They trailed Purdue but got a td w/12:40 left and an IR td to go up 14 and after a PU td, ND ran off the final 7:22 ending at the PU10. ND dealt Mich St (finished #3) their only loss of the season. The previous year ND gave Okla a tough home loss. LY OU got a 24 yd IR td on the 3rd play then another int set up a 32 yd td drive putting ND in a 14-0 hole they never got out of. They took on Ariz St in Arlington and after the loss to OU, they were an underdog. Tied at 27, ND got a 25 yd fg w/3:03 left then an IR td w/1:08 left. ASU made the yds close with a 75/7 drive for a gbg td w/11 left. USC missed a pair of fg's and ND won at home by 4. AF was down to a 4th string QB and ND won 45-10. They had a tough time getting Navy's offense off the field. Navy was SOD at the ND31 with 1:08 left and the Irish escaped to move to 7-2. DE Tuitt was wrongfully ejected which hurt the already banged up D and they lost 28-21 to Pitt. ND moved to 13-1-1 when it snows at home and beat BYU 23-13. Surprisingly the win over BYU was the first game ND did not trail since the opener. The Irish were within 24-20 after 3Q on the road vs #8 Stanford but lost by 7. In the bowl, the Irish went into Rutgers' backyard and came out with a 13 pt win. ND did benefit from 3 net close wins LY but get back QB Golson. They are stronger on both sides of the ball and will be improved, but face the toughest schedule in the country (pg 27).

2014 PROJECTED STARTING LINEUP

OFFENSE

JERSEY # IN BLUE

QB 5 EVERETT GOLSON JR. 6-0 200 **PS#20.** 11 st, 2405 (59%, 12-6), 298 rush (3.2) 10-1 as str in '12. Susp '13. #8 Malik Zaire (6'0" 208 rFr) **PS#15.** Lefty, DeShone Kizer is **PS#13.** 6 Charlie Fiessinger (6'1" 190 Sr) **RB 25 TAREAN FOLSTON SO.** 5-10 207 **PS#19.** 1 st, 12 gm, 470 (5.3) LY. I Greg Bryant (5'10" 204 rFr) **PS#6.** 3 gm then RS LY. **33 Cam McDaniel** (5'10" 207 Sr) **PS#63.** 21 gm, 134 (5.2) 4 st, 13 gm, 705 (4.6) LY. **SLOT 3 Amir Carlisle Jr.** 5-10 190 **PS#13.** 118 rush (6.2) **USC** '11. MedRS '12. 4 st RB, 204 rush (4.3) LY. WR Spp. **20 CJ Prossie** (6'1" 220 So) **PS#56.** 2 st 72 (10.3) LY. **16 Torii Hunter** (6'0" 190 Fr) **PS#36.** Off Set Tm POY LY. **WR 10 DAVARIS DANIELS JR.** 6-2 203 **PS#15.** 3 st, 490 (15.8) rFr. 9 st, 13 gm, 745 (15.2), **2nd Tm Ind LY.** **88 Corey Robinson** (6'5" 205 So) **PS#87.** 3 st, 13 gm, 157 (17.4) LY. **32 Will Mahone** (5'11" 214 So) **PS#23.** 2 gm ST LY. **WR 2 CHRIS BROWN JR.** 6-2 191 **PS#77.** 4 st, 12 gm, 2 rec true. 4 st, 13 gm, 209 (13.9) LY. **7 Will Fuller** (6'0" 171 So) **PS#46.** 3 st, 13 gm, 160 (26.7) LY. **11 Justin Brent** (6'1" 204 Fr) **PS#16.** IFS. Corey Holmes is **PS#31.** **TE 18 Ben Koyack Sr.** 6-5 261 **PS#2.** 2 st, 24 gm, 44 (11.0) 2Y 5 st, 13 gm, 171 (17.1) LY. **80 Durham Smythe** (6'5" 242 Jr) **PS#13.** 9 Mike Heuerman (6'4" 225 Fr) **PS#7.** Tyler Luatua is **PS#6.** Nic Weislar is **PS#11.** **C 72 NICK MARTIN JR.** 6-5 295 **PS#71.** 13 gm, mostly ST '12. F/11 st, then OFY (knee), **1st Tm Ind LY.** **77 Matt Hegarty** (6'5" 300 Jr) **PS#4.** 9 gm, mostly ST '12. L/2 st, 12 gm LY. **75 Mark Harrell** (6'4" 305 So) **PS#61.** DNP LY. **RG 74 CHRISTIAN LOMBARD SR.** 6-5 315 **PS#14.** 13 gm LY. 11. 13 st RT '12. 7 st at RG then OFY (back). LY. **60 John Montelus** (6'4" 320 rFr) **PS#13.** Jimmy Byrne is **PS#37.** **LS 61 Scott Daly** (6'2" 248 So) **PS#166.** 13 gm LY. **LG 79 Steve Elmer So.** 6-6 317 **PS#11.** 4 st RG, 10 gm as true LY. Could also play OT. **65 Conor Hanratty** (6'5" 309 Jr) **PS#36.** 5 gm '12. 4 st (2 RG, 2 LG), L/6 gms LY. Cam Mustipher (6'3" 294 Fr) **PS#31.** **RT 68 Mike McGlinchey rFr.** 6-8 300 **PS#26.** Very high ceiling, athletic enough to play TE and playerto watch in '14. **62 Colin McGovern** (6'5" 313 rFr) **PS#30.** RS LY. 70 PK cakes as HS Sr. Alex Bars (6'6" 290 Fr) **PS#15.** **LT 78 RONNIE STANLEY JR.** 6-6 318 **PS#20.** 2 gm as true '12. 13 st at RT LY. Moved to LT in spring '14. **70 Hunter Bivin** (6'6" 291 Fr) **PS#14.** Parade AA, Tm Captain as HS Sr. Quenton Nelson (6'5" 302 Fr) **PS#6.** **K 27 KYLE BRINDZA SR.** 6-1 236 **PS#1.** 71 KO, 12 TB true. 23-31 FG, L/52, 28-29 PAT, 71 KO, 26 TB '12. 20-26 FG, L/53, 38-38 PAT, 75 KO, 35 TB LY. **2x 1st Tm Ind.** Tyler Newsome is **PS#16.** **43 John Cherson** (5'9" 170 Fr).

DE 45 Romeo Okwara Jr. 6-4 258 **PS#83.** 13 gm, mostly ST, 7 tkl '12. 1 st, 13 gm, 19 tkl, 1.5 tfl, 2 qph LY. **90 Isaac Rochell** (6'4" 287 So) **PS#23.** 11 gm (inj L/2), 10 tkl as true. **89 Jacob Matuska** (6'5" 285 rFr) **PS#75.** **NT 94 Jarron Jones So.** 6-6 310 **PS#20.** 1 st, 12 gm, 20 tkl, 1 sk as rFr LY. **50 Chase Hounshell** (6'5" 271 Jr) **PS#77.** 7 gm, 4 tkl '11. DNP (inj) L/2Y. Jay Hayes (6'4" 275 Fr) **PS#39.** Daniel Cagle (6'2" 305 Fr) **PS#56.** **DT 91 SHELTON DAY JR.** 6-2 290 **PS#23.** 13 gm, 23 tkl, 3.5 tfl '12. 8 st, 11 gm, 33 tkl, 5.5 tfl LY. **69 Tony Springmann** (6'6" 296 Jr) **PS#55.** 13 gm, 11 tkl, 2 tfl '12. OFY LY. **53 Justin Utopo** (6'1" 290 Sr) **PS#52.** 35 gm, 7 tkl, 1 tfl 3Y. **DE 11 Ishaq Williams Sr.** 6-6 271 **PS#4.** 24 gm, 28 tkl, 4.5 tfl 2Y. 1 st, 11 gm, 17 tkl, 1 sk LY. **98 Andrew Trumbetti** (6'4" 250 Fr) **PS#37.** IFS. **56 Anthony Rabasa** (6'3" 243 Jr) **PS#42.** 7 gm, 7 tkl 2Y. Johnny Williams is **PS#100.** **WLB 9 JAYLON SMITH SO.** 6-3 230 **PS#1.** 13 st, 67 tkl, 6.5 tfl, 4pd, **1st Tm Frosh AA LY.** **44 Doug Randolph** (6'2" 240 rFr) **PS#35.** Shld'r Inj LY. **8 Kendall Moore** (6'1" 251 Sr) **PS#27.** 26 gm, 20 tkl, 13 gm, 17 tkl, 1 int LY. **6-2 223 PS#7.** 38 Joe Schmidt (6'1" 230 Jr) 6 tkl rFr. 13 gm, 15 tkl, 2 tfl LY. **58 Jarrett Grace** (6'3" 253 Jr) **PS#33.** 13 gm, 12 tkl '12. 3 st, 7 gm, 41 tkl, broke leg LY. OFS '14. **42 Michael Deeb** (6'2" 242 rFr) **PS#84.** **SLB 30 Ben Councill Jr.** 6-5 254 **PS#24.** 12 gm, 10 tkl rFr. 9 gm, 15 tkl, OFY (knee) LY. **31 John Turner** (6'1" 217 So) **PS#93.** 13 gm, 4 tkl LY. **17 James Onwuelu** (6'1" 215 So) **PS#43.** 3 st WR, 12 gm, 6 tkl LY. S spp. Nile Sykes is **PS#49.** **CB NA Cody Riggs Sr.** 5-9 184 **PS#28.** 14 st, 56 tkl 3Y. 11 st, 51 tkl, 6.5 tfl at Fla LY. Grad trans '14. **3 Cole Luke** (5'11" 190 So) **PS#32.** 13 gm, 15 tkl LY. **12 Devin Butler** (6'1" 181 So) **PS#63.** 12 gm, 5 tkl LY. **21 Jalen Brown** (6'1" 202 Jr) 3 tkl 2Y. **CB 6 KeiVarae Russell JR.** 5-11 190 **PS#18.** 13 st, 58 tkl, 5 tfl '12. 13 st, 51 tkl, 9 pd LY. **41 Matthias Farley** (5'11" 204 Jr) **PS#91.** 11 st, 49 tkl '12. 8 st, 49 tkl, 5 pd LY. **24 Josh Atkinson** (6'0" 197 Sr) **PS#61.** 10 tkl 3Y. **6-28 AUSTIN COLLINS WORTH SR.** 6-1 205 **PS#82.** 26 gm, 25 tkl, 2Y. Inj '12. 11 st, 13 gm, 43 tkl, 3 int LY. **22 Elijah Shumate** (6'0" 213 Jr) **PS#15.** 13 gm, 9 tkl '12. 4 st, 23 tkl LY. **29 Nicky Baratti** (6'1" 206 So) **PS#77.** 13 gm, 8 tkl '12. OFY (shld'r) LY. **S 10 MAX REDFIELD SO.** 6-1 194 **PS#7.** 1 st, 12 gm, 11 tkl as true. **4 Eilar Hardy** (6'0" 201 Jr) **PS#34.** DNP '12. 2 st, 26 tkl, 1 tfl LY. **Drue Tranquill** (6'2" 210 Fr) is **PS#1.** **39 Drew Recker** (6'0" 205 Fr). Connor Cavalieri (5'11" 190 Sr). **P 27 KYLE BRINDZA SR.** 6-1 236 **PS#1.** Avg'd 43.2 ypp as HS Sr. No punts here 24 yds (41.1), L56, 1 blk, 7 In20, tm net 34.7 LY. Tyler Newsome is **PS#16.** Avg'd 38 ypp as HS Sr. **84 Andrew Antognoli** (6'2" 190 Fr) **PS#43.**

ST RANK LGV:	2013	#70
	2012	#14
	2011	#45
	2010	#33
	2009	#74
	2008	#30
13 Tm Net Avg:	TmP	(34.7)	#107
	K/O	(37.2)	#106
	+/- tdkbk	-1	
	OppP	(35.7)	#37
	K/O	(37.5)	#33

NOTRE DAME FIGHTING IRISH

South Bend, Indiana WEATHER ZIP: 46556
Enrollment: 8,475 (#116)

BRIAN KELLY

PLAYING EXP: LB at Assumption ('79-'82)
PRIOR HC EXP: DL: 118-35-2 ('91-'03),
Central Michigan ('04-'06), Cincinnati ('06 Bowl-'09)

5TH Year Here / 11TH Overall FBS

2013 RECORDS

9-4
INDEPENDENT

2014 RET STARTERS:

OFF: 7* DEF: 5

LETTERMEN (OD/ST)

RET: 41 (14,25,2)

LOST: 21 (10,9,2)

RECORD: 37-15 FBS

Bowls: 2-2 4-3

Home: 20-6 46-13

Away: 11-6 35-19

Neutral: 6-3 9-5

Vs Ind/Conf: 6-1 39-14

Vs Top 10: 2-3 2-6

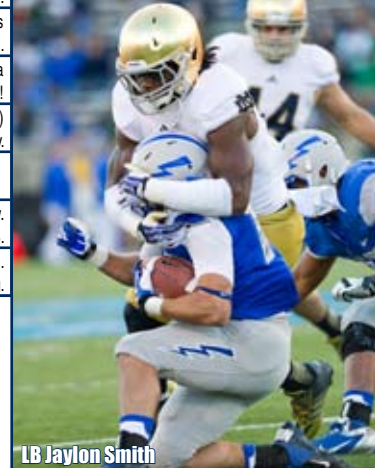
Vs Top 25: 7-7 15-11

Vs BCS: 27-13 30-22

Off Bye: 6-3 15-5

Off Loss: 8-5 21-13

INDEPENDENT



LB Jaylon Smith

LAST 5 BOWLS ALL-TIME RECORD 16-17

YR BOWL/TEAM RANK	LINE	OPPONENT	SCORE
08 Hawaii	-2	at Hawaii	49-21
10 Sun	+2	Miami, FL	33-17
11 Champs Sports	+3	Florida St - #25	14-18
12 BCS Champ - #1	+10	Alabama - #2	14-42
13 Pinstripe - #25	-14	Rutgers	29-16

DATE	OPPONENT	TURF	LINE	FINAL SCORE	W
Aug. 30	Rice	A			
Sep. 6	Michigan	A			
Sep. 13	† Purdue (Indianapolis)	A			
Sep. 20					
Sep. 27	† Syracuse (East Rutherford)	A			
Oct. 4	Stanford	A			
Oct. 11	North Carolina	A			
Oct. 18	at Florida St	G			
Oct. 25					
Nov. 1	† Navy (Landover)	G			
Nov. 8	at Arizona St	G			
Nov. 15	Northwestern	A			
Nov. 22	Louisville	A			
Nov. 29	at USC	G			

CAREER PASSING LEADERS
1. Brady Quinn 11,762 '03-'06
2. Jimmy Clausen 8,148 '07-'09
3. Tommy Rees 7,670 '10-'13

CAREER RUSHING LEADERS
1. Autry Denson 4,318 '95-'98
2. Allen Pinkett 4,131 '82-'85
3. Vagas Ferguson 3,472 '76-'79

CAREER RECEIVING LEADERS
1. Michael Floyd 3,686 '08-'11
2. Golden Tate 2,707 '07-'09
3. Jeff Samardzija 2,593 '03-'06

ND is 4-0 all-time incl a 54-11 win in the L/meeting ('88) vs Rice. The Fighting Irish finished 12-0 that yr under Lou Holtz winning a Nat'l Title. ND is 14-4 in home openers (3 of 4 losses by 7 pts or less).

ND is 2-6 (played every ssn s/02). LY was a NCAA rec crowd 115,109. ND never led but trailed by SD's 8 different times. Down 4, ND all'd a 75/101 td drive w/4:18 left and was int'd in the EZ (from UM6).

LTH (RCA Dome), ND lost 23-21 in '84. ND is 8-1 s/'05 (loss in West Lafayette '07) incl 6 str wins by 11 ppg. Irish are 12-1 in the reg ssn s/'00 at a neutral site (5 str wins by 26 ppg; only loss vs Navy in '10).

Bonus: This season, Notre Dame will play at three different NFL stadiums that are home to the IND Colts, NY Giants & Jets and WAS Redskins.

7th overall gm (series tied 3-3). ND last beat SU in '05 (34-10). As an FBS HC Brian Kelly is 15-5 after a bye. Kelly has never faced SU here but was 3-0 while at UC ('07-'09) winning each by 20+.

29th overall meeting (18th str). LY ND led 3-0 early but trailed 21-6 w/11:01 3Q. Into the 4Q ND was down just but their L/3 poss ended in a punt, an int at the SU41 & an int at the SU30 (22/11pt comb).

ND lost the L/gm ('08) 29-24, just their 2nd series loss (16-2, only other in 1960). ND led 24-22 but all'd a GW 4yd td run 5 sec into the 4Q. ND's L/3 drives ended in a SOD at NC23, an int at NC15 & a fmbal at NC7!

ND's only time here ('02) resulted in a 34-24 win. After beating #11 FSU that ssn, ND jumped to #4 (-8 FD) but the next gm lost to an unranked BC squad, 14-7. Irish are 7-17 vs ranked opp's but 7-7 under Kelly.

Bonus: The Fighting Irish are 6-0 at home in November the last 4 years.

Navy: LY the Fighting Irish avg 9.0 ypp vs the Midshipmen (a team high since 1998).

ND had won 43 str but are 4-3 L/7. LY featured 10 lead changes & no tm scored twice in a row. Down 3, ND went 76/111 p for a GW td w/3:47 left, next drive Navy was SOD at the ND31 w/1:08.

ND is 3-0 vs ASU. Last/only time here ('98) the Fighting Irish won 28-9 (just a 332-315 yd edge, -6 FD).

ND led 21-3 into the 4Q. Into '14, ND is 11-6 in 'true' road gms with avg win by 15 ppg, avg loss by 8 ppg.

ND's last 2 gm skid vs NU was '61/'62. ND will go 35 days between HG's (longest reg ssn stretch s/1987).

First meeting. ND is 11-3 in home finales. While the HC at Cincinnati, Kelly went 2-1 vs UL (won L/2 by 20 ppg).

LTH ND never trailed. USC cut the deficit to 19-13 w/9:20 left but ND hit a fg & stopped USC on 4&g from ND1.

NOTRE DAME STADIUM - FieldTurf

Built: 1930 • 80,795 (#18) • LY's Capacity: 100.0% (#17)

	2004	2005	2006	2007	2008	2009	2010	2011	2012	2013	10 Yr Total
STRAIGHT UP	6-6	9-3	10-3	3-9	7-6	6-6	8-5	8-5	12-1	9-4	78-48
Home	3-3	4-2	6-1	1-6	4-2	4-3	4-3	4-2	7-0	5-1	42-23
Away	2-2	5-0	3-1	2-3	2-4	1-3	2-1	3-2	4-0	2-3	26-19
Neutral	1-1	0-1	1-1	0-0	1-0	1-0	2-1	1-1	1-1	2-0	10-6
vs BCS	5-5	7-3	7-3	3-7	4-6	5-5	5-3	6-5	10-1	6-4	58-42
vs Non-Conf	1-1	2-0	3-0	0-2	3-0	1-1	3-2	2-0	2-0	3-0	20-6
ATS	6-6	7-5	4-8-1	5-7	7-6	4-8	7-4-2	5-8	7-5-1	5-8	57-65-4
Home Fav	2-2	2-3	2-5	1-2	2-3	1-5	1-2-2	3-3	3-3-1	1-3	18-31-3
Home Dog	1-1	1-0	0-0	1-3	1-0	1-0	1-1	0-0	0-0	0-1	6-6
Away Fav	1-1	1-1	1-1-1	0-0	2-0	0-2	1-0	1-3	0-1	1-2	9-11-1
Away Dog	1-1	3-0	0-1	3-2	1-3	2-0	2-0	0-1	2-0	1-1	15-9
Neutral	1-1	0-1	1-1	0-0	1-0	0-1	2-1	1-1	1-1	1-1	8-8
vs BCS	5-5	6-4	1-8-1	5-5	5-5	3-7	5-2-1	3-8	6-4-1	3-7	42-55-3
vs Non-Conf	1-1	1-1	3-0	0-2	2-1	1-1	2-2-1	2-0	1-1	2-1	15-10-1
Off SU Win	3-3	4-5	4-6	2-0	3-1	1-5	3-2-2	3-5	6-5-1	3-5	32-39-3
Off SU Loss	3-2	2-0	0-1-1	3-6	4-2	2-3	3-2	2-2	0-0	2-2	21-20-1



2013 STATISTICAL LEADERS

RUSHING	ATT	GAIN	LOST	NET	TD	AVG	PLAYER	TKL	SKS	TFL	PBU	INT	
Cam McDaniel	152	742	37	705	3	4.6	Dan Fox	95	1	4	2	0	
George Atkinson	93	583	28	555	3	6.0	Carlo Calabrese	93	0.5	5	1	0	
Tarean Folston	88	494	24	470	3	5.3	Jaylon Smith	67	0	6.5	3	1	
Amir Carlisle	47	211	7	204	0	4.3	Bennett Jackson	64	1	4	3	1	
TJ Jones	9	67	0	67	2	7.4	Kel'Vaare Russell	51	0	1.5	8	1	
Andrew Hendrix	16	50	24	26	1	1.6	Stephen Tuiti	50	7.5	1.5	2	1	
Tommy Rees	11	7	63	-56	0	-5.1	Matthias Farley	49	0	1	3	2	
PASSING	ATT	COM	PCT	YDS	TD	INT	QBH	PRINCE	SHEMBO	YDS	TD	INT	
Tommy Rees	414	224	54.1	3257	27	13	135.1	Austin Collinsworth	43	0	0.5	3	
Andrew Hendrix	14	2	14.3	56	0	0	47.9	Jarrett Gate	41	0	1	1	
RECEIVING	REC	YDS	AVG	TD	LONG	PLAYER	TKL	SKS	TFL	PBU	INT		
TJ Jones	70	1108	15.8	9	80	Louis Nix	27	0	2	2	0		
DaVaris Daniels	49	745	15.2	7	82	Ellar Hardy	26	0	1	0	0		
Troy Niklas	32	498	15.6	5	86	Elijah Shumate	23	0	1	1	0		
Chris Brown	15	209	13.9	1	40	Kona Schwenke	23	0.5	0	0	0		
Ben Koyack	10	171	17.1	3	38	Jarron Jones	20	1	0	0	0		
William Fuller	6	160	26.7	1	47	Romeo Okwara	19	0.5	1	0	0		
Cory Robinson	9	157	17.4	1	35	Kendall Moore	17	0	1	0	1		
CJ Prossie	7	72	10.3	0	20	Ishaq Williams	17	1	0.5	0	0		
George Atkinson	7	51	7.3	0	16	Cole Luke	15	0	0.5	2	0		
Benn Council							15	0	1	1	0		
PUNTING	NO	YDS	FC	NET	BLK	INT	7	NO	YDS	AVG	TD	LONG	
Kyle Brindza	43	1769	41.1	14	34.7(1)	1	7	PUNT RETURNS					
Alex Wulfeck	8	261	32.6	3	0	7	7	TJ Jones	14	106	7.6	0	
KICKING	XP	1-29	30-39	40-49	50+	TTL	LNG	KICK RETURNS	NO	YDS	AVG	TD	LONG
Kyle Brindza	38-38	11-11	2-4	4-7	3-4	20-26	53	George Atkinson	31	780	25.2	0	50

2013 GAME-BY-GAME STATS

SCORE	TTL	FD	RUSH	YDS	PASS	YDS	SKS	TTL	DEF	FD	RUSH	YDS	PASS	YDS	SKS	NET	YDS	TO'S	OFF	FOE	DEF	FOE	OFF	FOE	GM	GRADE
80,795	28-6	543	21	35-188	54	17-27	355	1	362	25	29-134	4.6	23-47	228	1	181	+1	#3	76	#5	40	#6.1				
115,109	30-41	410	23	19-96	51	29-53	314	1	460	25	39-166	4.3	21-33	294	1	-50	-1	#5	42	#10	-94	#7.4				
61,127	31-24	400	20	37-91	2.5	20-33	309	1	294	16	21-38	1.8	25-41	256	1	106	0	#9	-65	#10	-12	#7.4				
80,795	17-13	220	14	32-78	24	14-34	142	0	254	19	35-119	3.4	16-36	135	1	-34	+1	#9	-34	#1	142	#9.0				
80,795	21-35	324	12	29-220	7.6	9-25	104	1	450	25	42-212	5.0	23-31	238	0	-126	-3	#8	-28	#9	-29	#7.8				
66,960	37-34	424	23	37-145	3.9	17-28	279	0	427	22	25-65	2.6	33-47	362	6	-3	+2	#4	56	#6	33	#9.5				
80,795	14-10	300	17	40-134	3.4	14-35	162	2	330	18	31-129	4.2	20-34	201	2	-30	0	#8	-38	#6	75	#9.9				
44,672	45-10	466	22	37-135	3.6	18-26	331	1	339	19	65-290	4.5	8-12	49	0	127	+2	#8	-26	#7	31	#3.0				
80,795	38-34	506	25	36-264	7.3	12-20	242	0	419	28	70-331	4.7	6-9	88	1	87	-2	#2	121	#8	-8	#6.5				
65,500	21-28	456	16	24-138	5.8	18-39	318	0	355	23	41-112	2.7	22-35	243	1	101	-3	#4	96	#7	8	#5.1				
80,795	23-13	470	24	47-235	5.0	15-28	235	0	415	23	47-247	5.3	21-36	168	2	55	0	#3	99	#3	85	#9.1				
50,537	20-27	263	19	24-64	2.7	16-34	199	1	419	21	51-261	5.1	12-18	158	1	-156	0	#13	-86	#11	-15	#8.7				
47,122	29-16	494	31	43-175	4.1	27-47	319	0	236	16	26-80	3.1	10-29	156	4	258	+3	#5	88	#2	140	#9.2				
TOTALS	354-291	5276	267	440-1963	4.5	226-429	3313	8	4760	280	522-2184	4.2	240-408	2576	21	516	0	#7	297	#7	396	#4.1				
AVERAGES	27-22	406	20.5	34-151	4.5	52.7%	255.19%	366	21.6	40-168	4.2	58.8%	198	5.1%	40	0	#49	23	#48	30	#7.2					
ATTENDANCE	BCS	24-25	366	19.4	32-127	4.0	50.0%	239.18%	358	20.6	35-131	3.8	59.9%	227	5.6%	7	-1	#62	3	#54	27	#4.3				
80,795 (#16)	HOME	25-21	398	19.4	37-181	4.9	49.7%	218.20%	380	22.9	40-177	4.4	59.2%	203	5.4%	19	-1	#50	36	#46	48	#4.8				
67,389 (#19)	AWAY	29-24	415	21.8	31-117	3.8	55.2%	298.17%	351	20.0	41-158	3.9	58.3%	193	4.8%	64	+1	#52	8	#52	10	#3.3				

'09 RESULTS (6-6)