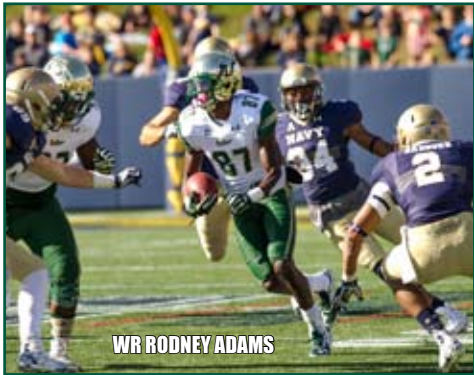


USF BULLS



WR RODNEY ADAMS

POSITION OUTLOOK FOR 2016

QUARTERBACKS - Three USF QB's combined to throw for 2,361 (49%, 11-11) in '14 including true frosh Quinton Flowers (PS#35) who had 1 start (111 yds pass, 73 rush ssn). The starter transferred after spring last year but I still called for improved numbers in 2015 as Flowers' skill set fit the new up-tempo offense. Flowers threw a lot of passes to RB's & TE's early and got better each week. He rushed for a QB school record 201 yards vs SMU and for 108 vs WKU. He topped 200 yards passing 5 times (2296, 59.1%, 22-8) and was #2 rusher (991, 5.2). Brett Kean (PS#105) and UCLA transfer Asiantii Woulard (PS#9) provide solid depth. Flowers should blossom into one of the AAC's top QB's.

RUNNING BACKS - USF was basically starting from scratch at this position in 2014 after losing 1,018 net rush yds (top returnee Darius Tice 141, 4.0). The Bulls had just 4 rushing td's in all of '13 and true frosh Marlon Mack (PS#95) equaled that in the opener (finish w/9) and he tied the school single game (Andre Hall '04) rushing record (24-275). Mack would top 100 three more times and became the first USF 1,000 yd rusher s/'05 (Hall), while also earning AAC Rookie of the Year. Another true frosh, D'Ernest Johnson, was a distant #2 (150, 3.3) while Tice had 104 (2.6). Last year I called Mack one of the AAC's top RB's and said the new offense fits him perfectly (more space). Despite an injury (29 yds in 2 gm span), he broke the USF record with 1,381 (6.6, 1st Tm All-AAC). Tice was #3 (460, 5.2) and Johnson was #4 w/307 (4.3, 356 #2 rec). This year all 3 return making it the top RB unit in the AAC.

RECEIVERS - USF is one of only nine teams that have never had a 1,000 yard receiver. HC Willie Taggart has a history of emphasizing the TE. Last year they lost 2 of their top 3 WR's along with their top TE (comb 1,178 yds) but still had 3 VHT's in unit. Rodney Adams (PS#49, speed) who was #2 (323, 14.0) in '14 dropped an 80 yd TD pass vs MD and had just 45 yds after 4 gms (RB's & TE's 63% of rec's after 4). He became the go-to guy and led with 822 and 18.3 ypc. True frosh Chris Barr was #3 (RB was #2) with 23 rec's but was #6 in yards. Soph Ryeshene Bronson (PS#63) had 258 (15.2). This year they lose TE's Sean Price (12 st, 296, 15.6, 2nd Tm AAC) and Marlon Pope (2 rec) but they are much more exp'd, add talent and are very deep with 16 receivers' having the potential to contribute.

OFFENSIVE LINE - In '13 USF only avg 90 ypg rush (3.0, 32 sk all'd). Taggart had the unit bulk up in the weight room (avg 304 in '14). With 104 car sts ret they improved (108 ypg, 3.4, 23 sk) but not to my expectations. LY they lost a 2nd Tm AAC 4Y RG, 3rd Tm AAC 3Y C (#7DC) and 2.5Y LT. They had to replace 111 car sts (only 50 car sts ret). Former Purdue HC Danny Hope

was named co-OC and OL cch and he did a fine job as USF more than doubled their rushing total to 247 ypg (5.4, 21 sk). This year they lose C Brynjar Gudmundsson (13/26), 2nd Tm AAC Thor Jozwiak (13/26), RT Mak Djulbegovic (13/15) and backup Clavon Nelson. They have a 5th OL coach in 5Y in Darren Hiller (Cincy OL cch). They drop to 36 car sts ret but 2 starters just like '15 and add in a PS#31 JUCO, who sat out '15.

DEFENSIVE LINE - In '14 the Bulls had to replace 3 All-Conf DL's (#5DC) and 2 other DE's (comb 13 st, 58 tkl). I said they could allow more than 4.0 ypc for the first time in school history and they did (183, 4.5, 20 sk). LY they lost 2 st's & 2 bkps. They allowed 428 rush to Navy and 278 (6.0) to Florida St but in the other 10 gms yielded just 103 ypg rush (2.96). Despite just 1 ret starter, they got back under 4.0 (141, 3.7, 34 sk). TY they lose 2nd Tm AAC DE Eric Lee (13 st, 45 tkl, 5 sk, 7 tfl), DT James Hamilton (13 st, 31 tkl, 3 sk), DT Demetrius Hill (2 st, 24 tkl, 3 sk) and DE Zack Bullock (12 st, 29 tkl). They again have 1 ret starter but add in PS#92 and #45 JC's and get back DT Derrick Calloway (PS#69, 30 tkl, 3 sk '14 out '15) who has NFL scouts attention. Their fiery DL coach is Eric Mathies.

LINEBACKERS - In '13 true frosh Nigel Harris (PS#121) had 12 tkl's in his first start (7 st, #7 tkl'r). My computer called for USF to allow 27.7 ppg and they allowed 27.0 (pg 43). LY they lost their #6 tkl'r (#6 DC). They ret'd Harris (#2 tkl'r, #1 FBS 6 FF) and their #4 & #5 tkl'r's. They moved to a 4-2-5 and S Jamie "Angry" Byrd moved to the S/LB spot known as Striker. Harris dropped to #8 tkl'r in the new defense. Soph Auggie Sanchez earned 2nd Tm AAC (#1 tkl'r, 8.5 tfl) and is the top ret tackler in the AAC. USF allowed just 22.9 ppg. This year they lose 3rd Tm AAC Byrd (13 st, #2 tkl'r, 5 sk, 6 tfl), Tashon Whitehurst (#10 tkl'r, 2 st) and CJ Garye (2 st, 9 tkl). Nate Godwin (#3 tkl'r) had 10 sts at DB and now moves into the vacant striker spot (one of tm's fastest). They also add in Texas transfer Cecil Cherry (PS#39) and are in the 2nd year of the defense.

DEFENSIVE BACKS - In '14 USF had just 1 ret starter (#109 PDR, 68.9%, 16-6). Last year they had to replace 1 starter and moved S Byrd to LB but ret'd their #1, #3, #8 and #10 tkl'r's and I said "should make a good sized move up in my PDR". USF rose all the way up to #38 (56.2%, 16-17 ratio). New starting CB Deatrick Nichols (8 tkl'r) was 1st Tm AAC (#4 tkl'r, 8.5 tfl, 4 pbu). SS Nate Godwin only started 10 but was #3 tackler. True frosh Ronnie Hoggins started 10. While Godwin does move inside to striker, the unit has 6 back who earned starts in '15 and add in true frosh Craig Watts (PS#49) making this one of the top secondaries in the AAC.

SPECIAL TEAMS - The Bulls had 2 straight Top 50 finishes in my Special Teams Rankings in '13 & '14. LY they had to replace super K Marvin Kloss along with their top KR & PR and I called for a step back. Emilio Nadelman hit 15-23 fg (long 49) but the team's TB's on KO's dropped to 7 of 81. P Mattias Ciabatti avg 40.2 (36.4 net) in '13, 44.4 (39.1 net) in '14 and 43.2 (38.2 net) in '15. USF did avg 26.7 on KR's and 10.9 on PR's. TY they lose their super P Mattias (2x All-AAC) but everyone else is back and they could improve on their #88 finish.

COACHES - Willie Taggart is building strength as he proclaimed he would with the Bulls program! Now in year 4 as HC, the win total has increased from 2 to 4 to 8. Taggart took over a winless team at WKU and in his 2nd season got them to 7 wins. Prior to WKU Taggart was the Stanford RB cch for 3Y and at WKU the 9Y prior as an asst. Both the OC and DC will be new for a 4th straight season. The Co-OC's are TJ Weist, who was at Michigan in '15 (Off Analytics cch), the OC and interim HC at UConn in '13 and WR cch at Cincy ('10-'12) along with Darren Hiller (OL coach 20Y, L3 at Cincy). Taggart will be the primary play caller. New DC Raymond Woodie has been LB coach under

Taggart for 6 years & Taggart did not want to change schemes for a 4th straight year. Alonzo Hampton takes over as ST coach.

THIS DECADE 30-44 (40.5%) #93 - USF has been a team with high expectations but mostly disappointing finishes. They were in Div IAA in '00 joining IA ball in '01 and CUSA in '03. In '07 the Bulls got as high as #2 AP at 6-0 but finished 9-4 (NR). In '08 they got as high as #10 at 5-0 but finished 8-5. USF was 75-44 in the first decade of the millennium. In Skip Holtz's first year ('10) they went 8-5. In his 2nd year, they got as high as #16 at 4-0 but crashed to just 5-7 and 3-9 '12. Despite being ranked in 4 out of 5 years (from '07-'11), USF never once have they finished ranked. In '13 Willie Taggart took over and the Bulls were picked 5th AAC by the media (I had them 8th). They finished just 2-10 (-94.6 ypg). In '14 the Bulls had 14 ret st's and I expected an improved record, but not a bowl. USF started 14 true frosh at times in '13-'14 comb'd. They finished at 4-8 in '14. LY they broke thru and went 8-5 to get to 30-44, 40.5% for the decade.

2015 ANALYSIS 8-5 - LY in Taggart's 3rd yr (top recruit class AAC L2Y), he ret'd 9 of their top 12 tkl'r's. It appeared status quo as they opened up 1-3, yet Taggart continued to say they were on the verge of a breakthrough. After leading Syracuse just 10-3 at half they exploded in the 2H and won 45-24. They were out FD'd 26-17 by UConn but won 28-20. They beat SMU then were out FD'd by Navy 22-9 in a losing effort and stood 4-4. USF dominated EC (277-29 yd half) but needed a 67 yd TD pass w/4:40 left to win by 5. They beat their first ranked team s/'11, when they trounced #21 Temple 44-23. USF was a home dog vs Cincy but had a 51-3 lead at half & then beat UCF 44-3. They led WKU 14-10 at half of their first bowl since '10 but lost. They still doubled their win total for a 2nd straight year.

ALSO ON ROSTER: WR Austin Aikens 6'0" 185 Sr DL Trevor Steinkie 5'11" 184 rFr OB Adam Robles 6'3" 211 So WR Tyler Pippens 5'10" 168 rFr DL Greg Reeves 6'2" 221 rFr HB Zaylon Ginter 5'10" 210 Sr WR Donovan Geter 6'6" 197 rFr DB Shannon Smith 6'1" 180 Sr

PHIL'S FORECAST

OFFENSE - The Gulf Coast offense returns 93% of their yards gained from 2015. Their 5,741 yds were a school record as were their 3,205 rush yards. QB Flowers, RB Mack and WR Adams are all at the top of the AAC, the big question is the O-line which returns just 2 starters but that was the case in '15 as well. My computer (pg 43) calls for them to top LY's 442 ypg!

DEFENSE - USF has their 3rd DC in 3 years as Tom Allen left for Indiana. New DC Woodie does have 7 returning starters to work with including 7 of the top 9 tacklers. USF's defense was #13 in tfl in '15. They do lose 4 of the front 7 but with 7 of the top 9 tacklers back and keeping the same schemes (1st time 4 years), they should be just as good.

2016 - USF won 7 of their last 8 regular season games LY and want to build on that momentum with 14 ret st's and most of their top players back. On the downside, they rate a -5.0 in my Stock Market Indicator (pg 32) & LY benefitted from +10 in TO's and were +4 net upsets. USF will also go from the hunter to the hunted as they must face Cincy, Memphis and Temple on the road as well as Florida St and Northern Illinois in non-conf play. USF ranks in the top 4 of my ratings at every position in the AAC and their 2 trips to the North are both early in the year, so they should avoid cold weather. They do pull Navy and Memphis out of the West but avoid Houston. Taggart has bagged the top recruiting class in the AAC the last 2 years and will try to build on the momentum of LY's 4-1 finish down the stretch. They have the advantage of having bowl practices for the first time s/'10. They are a clear contender in the AAC East and despite many of my key indicators pointing down, they have the talent to improve their record.

OFFENSE

JERSEY # IN GREEN

2016 PROJECTED STARTING LINEUP

JERSEY # IN GREEN

DEFENSE

QB 9 QUINTON FLOWERS JR. 6-0 209 PS#35. 1 st, 111 (40%, 0-2) as true. 13 st, 2296 (59%, 22-8), 991 rush So (5.2), 3rd Tm AAC LY. 7 Brett Kean (6'1" 209 rFr) PS#105. 4 Asiantii Woulard (6'3" 215 So) PS#9. UCLA trans LY.
HB 5 MARLON MACK JR. 6-0 210 PS#95. 12 st, 1381 (6.6) LY. 2x 1st Tm AAC. 2 D'Ernest Johnson (5'10" 208 Jr) PS#65. 1 st, 307 (4.3), 356 rec (13.7), 563 KR (26.8) LY. 13 Darius Tice (5'10" 211 Sr) PS#156.
WR 87 RODNEY ADAMS SR. 6-1 190 PS#49. 7 gm @ Tol '13. 3 st, 323 (14.0) here '14. 13 st, 822 (18.3), 2nd Tm AAC LY. 6 AJ Legree (6'1" 198 Sr) PS#131. Kentucky trans '14. 1 st, 24 (8.0) LY. 86 Stanley Cleveaux (6'3" 200 So) PS#164.
WR 83 MARQUEZ VALDES-SCANTLING JR. 6-3 205 PS#213. 11 st, 538 (12.2) 2Y. NCSI '14. Trans LY. 81 Ryeshene Bronson (6'3" 200 Jr) PS#63. 11 st, 258 (15.2) LY. Darnell Saltonstall (6'3" 188 Sr) PS#163. 10 gm LY. SLOUT
1 CHRIS BARR SO. 5-10 175 PS#288. 12 st, 200 (8.7) LY. 8 Tyre McCants (5'11" 215 So) PS#153. 1 gm, 164 (23.4). Deangelo Antoine (5'10" 180 rFr) PS#230. 82 Jordan Reed (5'10" 170 So) 8 gm LY as true.
TE 85 EKANAH DILLON SO. 6-5 255 PS#80. 10 gm, 208 (23.1) LY. 89 Mitchell Wilcox (6'4" 243 rFr) PS#53.
40 Riley Sheehan (6'3" 231 rFr). 80 Ryan Hintze (6'6" 235 Jr) PS#250. 48 Spencer Adkinson (6'3" 245 Jr).
C 7 CAMERON RUFF JR. 6-3 318 PS#145. 1 st LG '14. 6 gm LY. 68 Michael Galati (6'3" 290 So) PS#245. 3 gm LY. 72 Brooks Larkin (6'3" 312 rFr). 69 Cameron Campbell (6'3" 300 rFr) PS#299. LS 59 Alex Salvato (5'11" 200 Sr).
RG 61 DOMINIQUE THREATT SR. 6-1 323 PS#108. 6 st RG, 7 games as true. 1 st RG, 6 games '14. 13 st RG LY. Michael Wiggs (6'3" 290 Fr) PS#282. 2nd Tm All-FL as HS SR LY. Christian Gainer (6'6" 310 Fr) PS#122.
LG 73 JEREMI HALL JR. 6-5 340 PS#83. 7 gm '14. 8 gm LY. 63 Michael Smith (6'3" 303 So) PS#159. 1 gm as bkp OG LY. LS 58 Zach Stewart (6'3" 220 Jr) PS#100. 58 Dylan Rutledge (6'3" 242 Sr) PS#100.
RT 70 GLEN BETHEL JR. 6-6 300 PS#31 JUC. Offers by Fla & Ark. DNQ LY. IFS. 78 Billy Atterbury (6'4" 295 rFr) PS#229. RS LY. 2x All-FL in HS. Logan MacDonald (6'4" 270 Fr) PS#259. 1st Tm All-Conference as a HS Sr.
LT 75 KOFI AMICHIA SR. 6-4 291 PS#123. 3x All-AAC in HS. DNP '13. L2 st, 4 gms '14. 13 sts last year. 77 Marcus Norman (6'6" 300 rFr) PS#253. 96 Eric Mays (6'4" 295 So) PS#159. From DT to OL in spring.
K 35 EMILIO NADELMAN JR. 5-6 175 PS#251. 1 TB/3 KO in 1 gm '14. 15-23 fg's, L/49, 53-54 xp, 20 KO/10, 5 TB in 13 gm LY. 47 Jordan Acham (5'11" 191 So) PS#250. 7 gm, 3-3 xp's, 4 punts '14 at Stetson. WO here LY.

DE 60 BRUCE HECTOR JR. 6-2 296 PS#233. 6 gm '14. 12 gm, 19 tkl, 5 sk, 2 tfl LY. 56 Juwan Brown (6'2" 250 So) PS#189. DNP LY. 98 Mike Love (6'4" 260 Jr) PS#164. 3 gm '14. 12 gm, 10 tkl LY. Frank Johnson (6'5" 235 So) PS#203JC.
DT 99 KENYON BRONSON SO. 6-4 280 PS#188. 3 st, 13 tkl, 3.5 tfl, 4 pd LY. Derrick Calloway (6'2" 290 Sr) PS#68. 95 Marlon Gonzalez (6'4" 280 rFr) PS#108. RS '14. 94 Kirk Livingstone (6'4" 270 rFr) PS#212. RS '14.
NT 10 DEADRIN SENAT JR. 6-1 315 PS#62. 2 st, 18 tkl '14. 10 st, 46 tkl, 5.5 tfl LY. 675 squat. 93 Daniel Awoleke (6'5" 283 Sr) 2 games F2Y. 13 gm, 21 tkl, 4 tfl LY. 97 Nicholas Munera (6'5" 236 So) RS '14. DNP LY.
BULL 55 JOSH BLACK SO. 6-2 250 PS#139. 1 st, 7 tkl, 1 sk '14. 1 gm LY. 4 Jimmy Bayes (6'3" 225 So) PS#79. 5 gm LY. Tramall Ivy (6'4" 243 Jr) PS#45JC. 15 Vincent Jackson (6'2" 248 So) PS#90. RS '14. 9 gm LY.
WLB 57 NIGEL HARRIS SR. 6-0 225 PS#121. 18 st, 110 tkl, 12 tfl, 3rd Tm AAC F2Y. 10 st, 42 tkl, 4.5 tfl LY. 54 Nico Sawellie (6'2" 220 rFr). Danny Thomas (6'1" 215 So) PS#108. 12 gm, 10 tkl as true LY. Andre Polk is PS#171.
ILB 43 AUGGIE SANCHEZ JR. 6-2 242 PS#171. 12 st, 64 tkl '14. 12 st, 117 tkl, 8.5 tfl, 2nd Tm AAC LY. 33 Cecil Cherry (6'0" 240 rFr) PS#39. Trans from Texas. MiCarlo Stanley is PS#150. 39 Trent Shaw (6'2" 200 rFr).
STBK 36 NATE GODWIN SR. 5-10 205 PS#162. 9 st, 72 tkl '14. 10 st, 63 tkl LY. 21 Khalid McGee (5'10" 197 So) PS#150. 12 gm, 17 tkl, 3 tfl as true LY. 37 Nate Ferguson (5'9" 183 So) PS#258. 5 gm LY. Cameron Gergley (6'0" 175 So).
CB 3 DEATRICK NICHOLS JR. 5-10 185 PS#144. 13 st, 62 tkl, 8.5 tfl, 5 pbu, 4 int, 1st Tm AAC LY. 24 Johnny Ward (6'0" 178 Sr) PS#263. 12 st, 99 tkl, 12 pd 3Y. 30 Jalen Spencer (6'0" 183 Sr) PS#166. 6 gm F2Y. 10 gm, 5 tkl LY.
CB 19 RONNIE HOGGINS SO. 5-8 170 PS#155. 10 st, 26 tkl, 6 pbu, 2 int as true LY. 23 Mazzi Wilkins (6'0" 170 So) PS#214. 1 st, 20 tkl LY. L3 Lamar Robbins (6'2" 200 Sr) PS#107. 5 st, 35 tkl 3Y. 45 Andrew Hill (5'8" 174 So).
SS 34 MALIK DIXON RFR. 6-3 207 PS#262. 18 Jaymon Thomas (6'3" 196 So) PS#477. 6 gm, 7 tkl true LY. Craig Watts (6'0" 190 Fr) PS#49. Josh Dunn (6'0" 195 Fr) PS#105. 50 Devon Jones-Stewart (6'1" 193 Jr).
FS 20 DEVIN ABRAHAM JR. 5-9 188 PS#222. 6 st, 34 tkl '14. 13 st, 51 tkl, 6 pd LY. 13 Tajee Fullwood (6'2" 199 Jr) PS#172. 2 st, 38 tkl, 198 PR (10.4) LY. 27 Austin Hudson (6'2" 209 So). 22 Hassan Childs (6'0" 180 Sr).
P 41 BRENT GODWIN SO. 6-3 198 PS#250. Walk-on in Fall, RS '14. 1 game (bowl), 7 punts, 39.6 avg, L/44, 10 blk, 1 I20, OTB, 4 fc LY. 46 Eric Briggs (6'2" 197 Jr). Strong Leg. 47 Jordan Acham (5'11" 191 So) PS#250.

AMERICAN ATHLETIC - EAST