

CINCINNATI BEARCATS



RB Mike Boone Jersey #5 in '15

POSITION OUTLOOK FOR 2015

QUARTERBACKS - Not since 2005 has Cincy made it thru a season without its backup QB's getting significant playing time. In '12 UC had to replace their #3 career passer, Munchie Legaux threw for 1,716 (52%, 13-9, 335 rush) while Brandon Kay st'd the final 5. Kay was banged up in '13 and Legaux started before being OFY in Wk 2. Kay returned set the UC single season records for comp (262) and for comp% (66.3%) and his 3,302 yds was the 2nd best in UC history. LY they brought in VHT Notre Dame transfer Gunner Kiel (PS#1). Legaux (inj) was ? for the fall. Kiel hit 25-37-418 vs Toledo tying Tony Pike's sch record w/6 td's. After 3 gms Kiel had topped 1,000 yds with a 14-2 ratio (17-11 after that). He inj'd his ribs vs Memphis (hit 11-27) and Legaux QB'd the 2H. Kiel was listed as doubtful vs Miami but hit 31-57-355. Vs SMU, PS#83JC Jarred Evans was the top rusher (10-67) hitting 2-2 passes. He was susp'd after SMU and DNP another game (4 gm, 5 pass att, 110 yds rush). Kiel had been playing w/ bruised ribs and aggravated them vs USF and Legaux came in to hit 14-15-121. Kiel st'd vs Tulane but Legaux came in and led UC to 24 pts in his first 4 drives in his hometown (New Orleans). Kiel threw for 436 vs East Carolina but did not top 200 again until the bowl. On the year he threw for 3,254 (59.7%, 31-13, 142 rush). HC Tommy Tuberville said that Hayden Moore is going to be a star here (RS LY). TY the Bearcats lose Legaux and Michael Colosimo (5-13-78, mostly 2H bowl) but Kiel should be among the top QB's in the country and I like the depth.

RUNNING BACKS - In '13 Cincinnati had to replace George Winn (1334, 5.5). Hosey Williams (1,269 at JC), didn't start but led w/655 (5.7) while soph Tion Green (PS#71, 70 true) was #3 w/412 (4.5). LY Williams led w/103 in the opener but was OFY after 4 gms (140, 5.4). Green ply'd in 3 before he was also OFY (118, 4.2). Rod Moore led the RB's in rushing w/65 and 27 the next 2 and then Chad Banschbach (5'9" 185 So) had 58 vs SMU. True frosh Mike Boone had 8 carries for 32 yds in the first 6 but 212 (19 att) vs USF and had 1 other 100 yd effort (Tulane). He led w/650 (6.4). Tuberville said Boone will be a force the next 3 years as he is explosive and has a great work ethic. Moore topped 100 twice and finished #2 w/618 (4.3). Bobby Brown (6'0" 200 So) ply'd in the L/6 incl 67 yds (6.7) vs UConn. TY they lose Moore (9 st) but basically were without their top 3 rushers LY so they are in better shape as Williams (MedRS) and Green both return.

RECEIVERS - The Bearcats had to replace their top guy (939, 13.0) and their TE (8 st, 183 yd) in '14. They did return 4 of their top 5 rec's with the leading returnees being Shaq Washington (PS#89, 783, 10.0) and Chris Moore (PS#95, 645, 14.3). In '13 Ark transfer 6'6" Mekale McKay came in late (battled inj's) and while he only had 16 rec's, 7 went for td's and he avg'd an amazing 30.3 ypc (#4). Max Morrison was #5 w/447 (15.4) and Tuberville said it was the deepest rec corps he had in his 18Y as a HC. McKay opened '14 with a bang pulling in 175 vs Toledo and later 172 vs ECar. He also had 5 gms under 25 yds. He was #2 w/725 (16.5). Washington had 163 vs USF and led w/761 (11.5). Moore had 221 yds on just 3 rec vs Ohio St but that would be 33% of his yds (#3, 673, 22.4). Morrison was #4 (458, 10.2) and 6'3" JC Johnny Holton was #5 (431, 14.9). The only loss is Casey Gladney (6'2" 185 Sr, PS#38JC) who had 198 (16.5) LY. Everyone else returns and they comb for 6,835 career rec yds.

OFFENSIVE LINE - In '13 despite having 4 st'rs back (70 car sts) and a soft schedule, Cincinnati's rush numbers dropped to 168 ypg (4.2, 17 sk). LY they had to replace a 3rd Tm AAC 2Y st'g RG, a 3Y LG and an OG (7 st). They had 3 ret st'rs (71 car st). Three st'rs missed games early w/inj and RT Keebler was OFY after 1 start. UC dropped to 157 ypg (4.5, 18 sk). TY they lose 1st Tm AAC LT Eric Lefeld (13 st, 3Y st'r) who was UC's first 3x 1st Tm All-Conf ply'r since Jason Fabin (95-'97), LG Kevin Schloemer (5 st), C Dominic Mainello (3 st) and LG Tyreek Burwell who st'd the last 4 (5 tll). The car sts ret climb to 76 and this unit figures to be less injury-plagued and improved with the addition of a PS#112JC who was IFS.

DEFENSIVE LINE - In '13 Cincinnati basically had just 1 st'r back but still improved to all'g just 104 ypg rush (3.2, 35 sk). LY they had to replace their top 3 DT's but ret'd their top 4 DE's including Silverberry Mounon (9.5 sk). Mounon drew more attention from opposing O-lines (4 sk) which allowed Terrell Hartsfield to earn 1st Tm AAC (9 sk). With the weaker interior UC did allow 184 ypg rush (most s/01, 4.8, 35 sk). TY they lose Hartsfield (10 st, 38 tkl, 3 tfl), DE Jerrell Jordan (6 st, 24 tkl, 1 tfl), DT Brad Harrah (9 st, 32 tkl, 3.5 sk), DT Cameron Beard (13 st, 37 tkl). Mounon is the lone ret st'r on a D-line losing 4 of their top 5 tkl'rs and 13.5 of the unit's 20 sks.

LINEBACKERS - LY UC had to replace a 2nd Tm AAC LB (#1 tkl'r) and a bkp (21 tkl). They ret'd 3rd Tm AAC Nick Temple (#2 tkl'r) and Jeff Luc (PS#4, #7 tkl'r). Tuberville said Kevin Mounon might have been the best HS LB in the country but he RS. UC surprisingly went from allowing 21.0 ppg to 27.2. TY they lose 1st Tm AAC Luc (12 st, #1 tkl'r, 6.5 sk) and 2nd Tm AAC Nick Temple (13 st, #3 tkl'r, 3 sk, 7.5 tfl). They do return their #4, along with 2 that were tied as #13 tkl'rs, add in Mounon and a PS#115JC (IFS) but are less exp'd and lose their top 2.

DEFENSIVE BACKS - UC, with 3 st'rs back in '12, finished #20 in my PDR (57%, 13-16). In '13 it was a much less exp'd unit but they still did well finishing #35 (58%, 16-13). LY they had to replace 2 st'rs incl a 2nd Tm AAC CB. While they had 6 of the top 8 back, physical CB Adrian Witty only started 1 game (OFY, groin inj, 3 tkl). UC dropped all the way down to #91 (60.8%, 22-8). TY they only lose CB Howard Wilder (12 st, #6 tkl'r, 2 int, 4 pbu). Three st'rs return (#2, #5, #6 and #8 tkl'rs), they also add in Ark transfer Chris Murphy (PS#117, Sct tm POY) and Witty is back so I will look for a good sized climb in my PDR.

SPECIAL TEAMS - LY most of the key players were back but many lost their spots. RFR Andrew Gantz (PS#23) hit a 47 yd GW vs ECar. He hit 14 of his first 16 fg's but missed 2 of the last 4. RFR P Sam Geraci avg 39.4 (35.9 net) while Shaq Washington avg 9.9 on PR in '13 (6.1 '14). The tm avg 19.6 on KR. They did move up to #46 in my ST rankings and should move up even higher with everyone back.

COACHES - Cincy has gone from Mark Dantonio to Brian Kelly to Butch Jones to Tommy Tuberville. What a job of reloading! Tuberville is in his 3rd season and brought home a share of the AAC Title giving the Bearcats their 5th #1 finish in the L7Y. Tuberville's HC experience includes Ole Miss ('95-'98), Auburn ('99-'08) and TT ('10-'12). Eddie Gran was an OC for the 1st time in '13 (prev 3Y Florida St RB/ST cch) and was also at Tenn ('09) and Auburn ('99-'08). Co-DC Robert Prunty was UC's DE cch his 1st year here and co-DC LY. He spent the previous 3Y at TT (DE cch, B12 recruiter of yr). New co-DC Steve Clinkscales was the DB cch here the L2Y. He was at Illinois (DB cch) for 1Y and Toledo (CB's) the previous 2Y. Ty Linder joins the Cincinnati staff TY as the ST Coor/TE cch. He was GA at Texas Tech under Tuberville in '10, as well as prior ST coor stops at Oklahoma St and TCU.

ALSO ON ROSTER:

QB	Luke Wight 6'4" 210 Fr	TE	Tyler Cogswell 6'4" 248 So	LB	Daniel Nlodgo 6'0" 203 Fr
FB	EJ Junior 6'9" 222 Jr	OL	Chandler Marston 6'4" 275 Fr	LB	Trevor Ginn 6'0" 205 So
FB	Lindsay Crook 6'2" 222 So	OL	Garrett Campbell 6'5" 308 So	DB	John James 5'11" 175 Sr
WR	Justin Samueller 6'1" 185 Fr	DL	Tyler Lyon 6'3" 200 Fr	DB	JJ Pinckney 6'3" 185 Fr
TE	Jake Eilers 6'5" 225 Fr	DL	Kein Minor 6'5" 250 Fr	DB	Alex Thomas 6'1" 185 Fr
TE	Deionte Buckley 5'9" 201 Jr	LB	John Manfredo 6'0" 200 Fr	DB	Davon Witherspoon 6'3" 200 Fr
		LB	Mason Antoun 6'1" 225 Sr		

ST BANK LGY:

2014	...#126
2013	...#14
2012	...#81
2011	...#12
2010	...#63
2009	...#8
14 Tm Net Avg	
ST (no K)	...#65
K only	...#92
TmP	(35.9) ...#22
OppP	(35.6) ...#27
Tm SL	(24.5) ...#106
Opp SL	(25.5) ...#60
TDBLK/PRF	...#42

PHIL'S FORECAST

Cincinnati has now won or shared 5 of the last 7 Big East/AAC Titles. The '09 season (502 pts) was remarkable as UC had just 1 ret st'r on D but they still went 12-0 in the reg sn and were ranked as high as #4. They slumped to 4-8 in '10. In '11 UC made my Most Improved List and went 10-3 and finished 10-3 again in '12 winning bowls over Vandy & Duke. Tommy Tuberville inherited just 12 ret st'rs in '13. They got back to the Belk Bowl but lost to NC 39-17 to finish 9-4. They finished #9 in the NCAA on Defense (316 ypg). In 2014 the Bearcats ret'd six of their top 9 tkl'rs. They avoided UCF in league play and with 13 ret st'rs were favored in 10 of their 13 gms. UC was playing their HG's at Paul Brown Stadium and was the last major college team to debut in '14 (2 open dates). UC beat Toledo 58-34 but then only beat rival Miami, Oh 31-24 (370-364 yd). They trailed Ohio St 30-7 but battled back within 33-28 before losing 50-28 (Ohio St 710 yds). They gave up 610 yds in a 41-14 (worst home loss s/05) loss to Memphis and 621 at Miami, Fl losing 55-34. Taking on a couple of weak offenses, the D got stronger as they beat SMU 41-3 and USF 34-17 (led 27-3). On a Halloween Friday night game, they quickly took Tulane out leading 24-0 at half and winning 38-14. Vs East Carolina, HC Tuberville tried a 4th down gamble (from own 33) which backfired but they still rebounded to take the lead on a 47 yd fg with :15 left then got a 27 yd FR td (lateral play) for a misleading 54-46 win. The Bearcats shut out Conn 41-0 (425-129 yds) then beat Temple 14-6 (outgained 267-255 yd) moving their conf road winning streak to 7 straight dating back to '13. They led Houston 38-24 but on the final play, Ward's inc pass thwarted UH's comeback attempt as Cincinnati escaped with the 38-31 win. That put them in the Military Bowl vs Virginia Tech and while they had a 302-166 yd edge at half, they trailed 13-10 and lost 33-17 (Kiel missed most 2H) for a 9-4 record (just 1 of 7 FBS programs w/9+ wins in each of the L4Y). The conf tie was Tommy Tuberville's first in 10 years ('04 Auburn). 2015 Cincinnati benefitted from 3 net close wins and despite going 7-1 in conf play, were only +72.4 ypg (5th best). UC does draw both Houston and Memphis out of the West (both on road). They also benefitted from a positive off ypp (13.5). The Bearcats do open their newly remodeled Nippert Stadium and have 13 ret st'rs incl QB Kiel. Five of my 9 sets of power ratings call them the best team in the AAC.

OFFENSE 2015 PROJECTED STARTING LINEUP DEFENSE

QB 11 GUNNER KIEL JR. 6-4 208 PS#1. ND trans '13. 13 st, 3254 (60%, 31-13), 3rd Tm AAC LY. Hayden Moore (6'3" 193 Fr) PS#107. 12 Jarred Evans (6'2" 190 Sr) PS#83JC. 4 gm (susp), 5 att, 10 yd, 110 rush (5.0) LY.

RB 5 Mike Boone So. 5-10 205 PS#168. 9 gm, 650 (6.4), 62 rec (10.3) as true LY. 23 Hosey Williams (5'9" 199 Sr) PS#279JC. 12 gm, 655 (5.7) '13. 4 st, 140 (4.0) OFY LY. 7 Tion Green (6'0" 220 Jr) PS#71. 3 gm, 118 (4.2) Med RS LY.

WR 2 MEKALE MCKAY SR. 6-6 195 PS#147. 10 st, 317 (15.1) true. 1 st, 485 (30.3) '13. 12 st, 725 (16.5) LY.

80 Alex Chisum (6'3" 195 Sr) PS#84. 6 st, 442 (15.8) ZY. RS '13. 13 gm, 242 (11.0) LY. Tshumbi Johnson (5'11" 175 So) PS#129.

WR 15 CHRIS MOORE SR. 6-1 190 PS#95. 13 st, 25 gm, 758 (15.5) 2Y. 13 st, 673 (22.4) LY. 17 Jeremy Graves (6'2" 190 Jr) PS#136. 26 gm, 6 rec 2Y. RS LY. Kahill Lewis is PS#132. 86 Brandon Hergott (6'1" 190 Fr).

WR 19 SHAQ WASHINGTON SR. 5-9 174 PS#89. 1 st, Med-RS '11 5 gm, 23 (7.7) '12. 10 st, 783 (10.0), 109 PR (9.9) '13. 12 st, 761 (11.5), 79 PR (6.1) LY. 3 Johnny Holton (6'3" 190 Sr) PS#438JC. 1 st, 431 (14.9), 722 KR (20.6) LY.

WR 25 MAX MORRISON SR. 6-1 173 PS#317. 10 gm '12. 12 st, 447 (15.4) '13. 10 st, 458 (10.2) LY. 84 Nate Cole (6'1" 193 Jr) PS#89. 25 gm, 184 (9.7) ZY. TE 81 DJ Dowdy (6'4" 241 Jr) PS#61. 1 st, 11 gm '13. 3 st, 5 rec LY.

C 59 DEYSHAWN BOND JR. 6-2 298 PS#218. 13 st '13. 10 st (knee) LY. 66 David Niehaus (6'1" 288 So) 2 gm LY.

LG 64 Will Steur (6'4" 303 So) 3 gm LY. LS 61 Kirk Willis (6'2" 235 Sr) PS#771. 39 gm LY. 47 Jon Vincent (6'2" 210 So).

RG NA Delonte Murray Jr. 6-5 311 PS#112JC. 2nd Tm All-Conf at JC LY. 67 Kyle Williams (6'5" 281 Jr) PS#170. GS '12. OFY (shoulder) '13-14. 79 Ryan Stout (6'5" 265 rFr), Tyler McGarr (6'4" 275 Fr) PS#265.

LG 73 Ryan Leahy Jr. 6-6 295 PS#179. 4 gm '13. 3 st, 8 gm LY. 58 Chad West (6'6" 292 Sr) PS#189. DNP '11 12 gm, 3 tkl '13. 11 gm OL LY. 77 John Kurtz (6'5" 258 rFr) PS#313. Evan Mallory is PS#167. IFS.

RT 74 JUSTIN MURRAY SR. 6-5 295 PS#163. 1 gm '12. 6 gm '13. 12 st LY. Idarius Ray (6'5" 305 Jr) PS#501JC.

IFS. 54 Ja'Merez Bowen (6'4" 270 rFr) PS#175. OL from DL spg '15. 68 Jeff Duncan (6'6" 270 rFr) PS#530.

LT 78 PARKER EHINGER SR. 6-7 315 PS#222. 12 st (11RT, 1RG), 13 gm '12. 13 st (F12 RT, 1RG) '13. 3 st RG, 1st Tm AAC LY. 76 Korey Cunningham (6'5" 254 So) PS#74TE. 12 gm LY. 54 Luke Callahan (6'5" 278 Fr) PS#191.

K 16 ANDREW GANTZ SO. 5-9 158 PS#23. RS '13. 16-20 fg LY. 47, 52-54 PAT. 1st Tm AAC LY. Josh Pasley (5'11" 205 Jr) PS#446JC. 9-13 fg's L/45, 40-41 PAT at JC LY. IFS. 56 John Colosimo (6'0" 190 So). DNP LY.

DE 92 SILVERBERRY MOUHON SR. 6-4 252 PS#267. 13 gm, 19 tkl, 1 sk '12. 12 st, 41 tkl, 9.5 sk, 3 tfl, 2nd Tm AAC '13. 10 st, 46 tkl, 4 sk, 3 qb LY. Lyndon Johnson (6'6" 270 Jr) PS#430JC. Marquise Copeland (6'3" 230 Fr) PS#116.

DT 70 Brandon Mitchell Sr. 6-2 290 PS#247. DNP '12. 9 gm, 5 tkl '13. 4 st, 13 gm, 23 tkl, 1 qb LY. 99 Alex Pace (6'2" 295 Jr) PS#193. 2 gm '13. 12 gm, 18 tkl OFY LY. 63 Chris Ferguson (6'4" 275 Fr) PS#369. From OL in spg.

DT 31 Hakeem Allonze Jr. 6-5 290 PS#87JC. Chris Burton (6'3" 272 So) PS#51TE. 13 gm, 7 tkl, 1 sk LY.

96 Cortez Broughton (6'3" 280 Fr) PS#428. 2 gm, Med RS LY. Norman Oglesby is PS#227. 77 Beau Harmon (6'3" 255 So).

DE 56 Mark Wilson So. 6-3 225 PS#248. 9 gm, 3 tkl, 1 sk LY. 47 Landon Brazile (6'6" 230 Fr) PS#223.

Dryan Wright (6'4" 235 Fr) PS#533. IFS. Caleb Ashworth (6'3" 235 Fr) PS#213. 51 Kimoni Fitts (6'4" 230 Fr).

MLB 23 Eric Wilson Jr. 6-2 225 PS#183. N'wstrn trans '13. 13 gm, 30 tkl, 3.5 tfl LY. Antonio Kinard (6'3" 220 Jr) PS#115JC. IFS. Bryce Jenkinson is PS#116. 53 Franklin Brusciannelli (6'0" 221 Jr) PS#316. 1 gm 2Y.

MLB 48 Kevin Mounon rFr. 6-2 225 PS#41. 1 gm, Med RS LY. 6 Clemente Casseus (6'1" 227 Sr) 2 gm, 8 tkl true. 11 gm, 12 tkl '12. 13 gm, 26 tkl, 1 tfl '13. 1 st, 4 gm, 14 tkl, OFY LY. 41 Kevin Hyland (6'6" 230 Sr) 28 gm, 10 tkl LY.

SLB 9 LEVITICUS PAYNE SR. 5-10 192 PS#126. 13 gm, 8 tkl true. 4 gm, 13 gm, 24 tkl '13. 12 st, 57 tkl, 2 sk, 3.5 tfl, 7 pbu, 1 int LY. 40 Kevin Brown (6'1" 206 Sr) PS#207. 21 gm, 20 tkl 2Y. 1 st, 13 gm, 30 tkl, 2 tfl, 5 pbu, 1 qb LY.

CB 30 Chris Murphy So. 5-10 180 PS#117. Ark trans. Sct Tm DPOY LY. IFS. 7 Aaron Brown (5'11" 172 So) PS#442. 1 st, 12 gm, 12 tkl, 1 int LY. 32 Linden Stephens (6'0" 185 So) PS#415. 13 gm, 19 tkl, 4 pbu, 1 int, 1 qb LY.

CB 8 ADRIAN WITTY SR. 5-10 187 PS#358. 12 gm, 15 tkl '11. 1 st, 11 gm, 25 tkl, 4.5 tfl '12. 10 st, 13 gm, 46 tkl, 5 pd '13. 1 st, OFY LY. Granted 6th Yr. 13 Grant Coleman (6'0" 176 Jr) PS#104. 6 gm, 5 tkl true. 12 st, 56 tkl LY.

S 29 ANDRE JONES JR. 6-1 197 PS#131. 13 gm, 22 tkl '13. 10 st, 13 gm, 44 tkl, 3 tfl, 6 pbu, 1 int LY.

S Mike Tyson (6'2" 200 Jr) PS#300. 9 gm, 18 tkl '13. 3 st, 13 gm, 41 tkl, 1 pbu LY. 2 Tyrell Gilbert (6'1" 200 Fr) PS#278.

S 4 ZACH EDWARDS JR. 5-11 186 PS#274. GS '12. 11 st, 73 tkl, 2.5 tfl, 9 pd '13. 13 st, 121 tkl, 3.5 tfl, 6 pbu, 2 int LY. 20 Carter Jacobs (6'1" 193 So) PS#349. 13 gm, 9 gm, 1 pbu as true LY. Malik Clements is PS#235.

P 26 SAM GERACI SO. 6-4 217 Walked on and RS '13. 13 gm, 51 punts (39.4) L/60, 15 I20, 13 fc, 35.9 team net, 0 TB on 1 KO last year. No other punter listed on depth chart post spring.

CINCINNATI BEARCATS

Cincinnati, Ohio

WEATHER ZIP: 45202

Enrollment: 23,706 (#5/#46)

TOMMY TUBERVILLE

PLAYING EXP: S at Southern Arkansas (72-75)
PRIOR HC EXP: Ole Miss (95-'98), Auburn (99-'08),
Texas Tech (10-11)

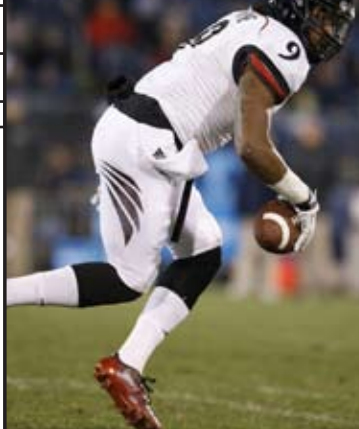
3RD Year Here / 20TH Overall

2014 RECORDS
9-4
CONF: 7-1 OVC: #1-60

2015 RET STARTERS:
OFF: 8* DEF: 5

LETTERMEN (O/D/ST)
RET: 42 (20, 19, 3)
LOST: 23 (13, 8, 2)

CB Leviticus Payne



LAST 5 BOWLS ALL-TIME RECORD 7-8

YR	BOWL/TEAM RANK	LINE	OPPONENT	SCORE
09	Sugar - #4	+12'	Florida - #5	24-51
11	Liberty	E	Vanderbilt	31-24
12	Belk	-9	Duke	48-34
13	Belk	+2'	North Carolina	17-39
14	Military	-2'	Virginia Tech	17-33

DATE	OPPONENT	TURF	LINE	FINAL SCORE	UC	OPP	W
Sep. 5	Alabama A&M	A					
Sep. 12	Temple	A					
Sep. 19	at Miami, Oh	A					
Sep. 24	at Memphis (Thur)	A					
Oct. 1	MIAMI, FL IS OFF BYE Miami, FL (Thur)	A					
Oct. 10							
Oct. 16	at BYU (Fri)	G					
Oct. 24	Connecticut (HC)	A					
Oct. 31	UCF	A					
Nov. 7	at Houston	A					
Nov. 14	Tulsa	A					
Nov. 20	at USF (Fri)	G					
Nov. 28	at East Carolina	G					
Dec. 5							

CAREER PASSING LEADERS

- Gino Guidugli 11,453 '01-'04
- Danny McCain 6,801 '84-'87
- Deontay Kenner 6,278 '97-'00
- Zach Collaros 6,278 '08-'11

CAREER RUSHING LEADERS

- Reggie Taylor 4,242 '83-'86
- DeMarco McCleskey 3,487 '98, '00-'02
- Isaiah Peard 3,288 '08-'11

CAREER RECEIVING LEADERS

- Mardy Gilyard 3,003 '05, '07-'09
- Dominick Goodman 2,512 '05-'08
- LaDaris Vann 2,483 '99-'02

First mtg. Bearcats have won 13 straight home openers by 34 ppq (L/3 vs FBS programs). Bulldogs went 4-8 LY incl a 41-14 loss at UAB. A&M is 2-0 vs current AAC teams (beat UCF in '81 & '82). UC has won 5 str (L/loss in '85). LY was a defensive battle. UC trailed 3-0 into the 2Q but got a sk/fmb! & went 3/2pl for a td, 7-3 w/12:39 2Q. UC led 14-6 w/7:00 3Q holding Temple to 49/17pl its L/5 top.

The Bearcats have won 4 str in Oxford incl the LTH. It was 0-0 until UC went 79/16! (7:41 TOP) scoring at td w/4:55 left. That shutout marked UC's 2nd str here as Miami hasn't scored in 9 str Q's.

UC is 5-2 s/00 incl a 34-21 win LTH on a Wed night. UC only led 14-7 at HT despite a 218-58 yd edge. In the 2H the Tigers cut the deficit to 7 & 6 late 4Q but both times Bearcats answered w/td drives.

Cincinnati is 1-11 (only series win was 1st mtg in 1947). LY tied 7-7 w/6:54 1Q UC all'd 27 of the next 30 pts incl a 46 yd IR td. From 3:34 3Q on, both alternated scores as UC never got closer than 21.

Bonus: Bearcats are 2-9 in road openers s/04. September 5th will be the Grand Reopening of newly renovated & expanded Nippert Stadium (LY UC played its home games at Paul Brown Stadium).

First meeting. This will mark the Bearcats first time playing west of the Central Time Zone since a 28-14 loss at Fresno St in 2010. Excluding rival, Miami (Oh), UC has lost their L/7 non-conf AG's into '15.

Overall UC has posted a shutout in 3 of the L/4 ssn's incl B2B yrs. LY prior to Conn's 58/11pl 4Q gbg drive (L/poss) the Huskies ran just 5pl in Bearcats terr w/the first coming late 3Q down 41-0.

First mtg. UCF HC O'Leary has been w/UCF s/04 & was GT's HC from '94-'01. UC is Tuberville's 4th HC'ing job, interestingly HC's have never crossed paths.

UC is 9-2 incl a 24-17 win LTH. UC never trailed & led 24-7 4Q (UH scored 10 pts in L/5:22). Tuberville is 3-0 all-time vs UH.

UC has won 4 str incl a 34-24 win in L/mtg ('97). That ssn UC ply'd in the Humanitarian Bowl snapping a 47y bowl drought.

LTH UC trailed 13-0 until a td pass 2Q. After that they all'd 13 str trailed 26-6 into the 4Q. UC got w/in 6 but outside ng w/2:02.

LTH ('04) EC cut it to 24-19 with a 75 yd td pass w/5:20 3Q. UC held EC to just 27 yds their L/4 pass & ran out U/8:05.

HERE	CAREER
Record: 18-8	148-85
Bowls: 0-2	7-5
Home: 10-2	88-35
Away: 8-4	51-41
Neutral: 0-2	9-9
Vs Conf: 13-3	86-70
Vs Top 10: 0-0	18-21
Vs Top 25: 0-2	26-45
Vs Ps: 1-5	10-15
Off Bye: 2-4	24-18
Off Loss: 3-3	42-32

AAC - EAST CUSA '96-'04

NIPPERT STADIUM - UBU Speed Series S5-M

Built: 1924 - 40,000 (#76) - LY's Capacity (at Paul Brown): 72,1% (#81)

	2005	2006	2007	2008	2009	2010	2011	2012	2013	2014	10 Yr Total
STRAIGHT UP	4-7	8-5	10-3	11-3	12-1	4-8	10-3	10-3	9-4	9-4	87-41
Home	3-2	6-1	4-2	6-0	6-0	3-4	5-1	6-1	5-1	5-1	49-13
Away	1-5	1-4	5-1	5-2	6-0	1-4	4-2	2-2	4-2	4-2	33-24
Neutral	0-0	1-0	1-0	0-1	0-1	0-0	1-0	2-0	0-1	0-1	5-4
vs Conf	2-5	4-3	4-3	6-1	7-0	2-5	5-2	5-2	6-2	7-1	48-24
vs Non-Conf	2-2	4-2	6-0	5-2	5-1	2-3	5-1	5-1	3-2	2-3	39-17
ATS	3-6-1	6-5-1	9-3	6-7	6-7	4-8	8-5	9-4	6-7	7-5-1	64-57-3
Home Fav	0-1	2-1	2-1	2-2	2-4	2-4	4-2	4-3	3-2	2-2-1	23-22-1
Home Dog	1-2	2-1	2-0	1-0	0-0	1-0	0-0	0-0	0-1	1-0	8-4
Away Fav	0-0	0-1	3-1	2-3	3-2	1-0	2-1	2-1	1-3	4-0	18-12
Away Dog	2-3-1	2-1-1	2-0	1-1	1-0	0-4	1-1	1-0	2-0	0-2	12-12-2
Neutral	0-0	0-1	0-1	0-1	0-1	0-0	1-0	2-0	0-1	0-1	3-6
vs Conf	3-4	4-2-1	5-2	4-3	4-3	2-5	3-4	6-1	4-4	6-1-1	41-29-2
vs Non-Conf	0-2-1	2-3	4-1	2-4	2-3	2-3	1-4	23-28-1	2-3	1-4	23-28-1
Off SU Win	0-3-1	2-4-1	7-2	4-7	5-7	1-3	5-4	5-4	4-5	5-3-1	38-42-3
Off SU Loss	3-2	4-1	2-1	2-0	0-0	3-4	2-1	3-0	1-2	1-2	21-13



SIGNERS: 0 WHT - 12 HT - 10 IBS

2014 STATISTICAL LEADERS

RUSHING	ATT	GAIN	LOST	NET	TO AVG	PLAYER	TKL	SKS	TFL	PBU	INT	QBH
Mike Boone	101	655	5	650	9.6	Jeff Luc	134	6.5	3.5	4	0	6
Rod Moore	143	659	41	618	5.4	Zach Edwards	121	0	3.5	6	2	0
Gunner Kiel	63	282	140	142	2.3	Nick Temple	113	3	7.5	2	0	2
Hosey Williams	26	144	4	140	5.4	Leviticus Payne	57	2	3.5	7	1	1
Tion Green	28	119	1	118	4.2	Grant Coleman	56	0	1	2	0	0
Jarred Evans	22	118	8	110	5.0	Howard Wilder	47	1	1.5	2	0	0
Munchie Legaux	20	83	33	50	2.5	Silverberry Mounch	46	4	1	1	0	3
PASSING	ATT	COM	PCT	YDS	INT	QBR	ANDRE JONES	44	0	3	6	1
Gunner Kiel	390	233	59.7	3254	31	13	149.4					
Munchie Legaux	80	53	66.2	574	3	1	136.4					
Michael Colosimo	13	5	38.5	78	1	0	114.2					
RECEIVING	REC	YDS	AVG	TO	LANGR	BRAD HARAH <th>32</th> <th>3.5</th> <th>2.5</th> <th>2</th> <th>2</th>	32	3.5	2.5	2	2	
Shaq Washington	66	761	11.5	4	40	Kevin Brown	30	1	1	5	0	
Mekale McKay	44	725	16.5	8	80	Eric Wilson	30	0	3.5	0	2	
Chris Moore	30	673	22.4	8	83	Jerrell Jordan	24	0	1	1	0	
Max Morrison	45	458	10.2	4	41	Brandon Mitchell	23	0.5	0	0	1	
Johnny Holton	29	431	14.9	5	41	Linden Stephens	19	0	4	1	1	
Alex Chisum	22	242	11.0	2	23	Alex Pace	18	0	3	0	0	
Casey Gladney	12	198	16.5	1	54	Clemente Cassus	14	0.5	1	1	0	
Nate Cole	15	145	9.7	2	34	Aaron Brown	12	0	0	1	0	
PUNTING	NO	YDS	AVG	FC	NET	BLK	CARTER JACOBS <td>9</td> <td>0</td> <td>1</td> <td>0</td> <td>0</td>	9	0	1	0	0
Sam Geraci	51	2007	39.4	13	35.9	(0)	0					
John Lloyd	11	399	36.3	2	0	5						
KICKING	XP	1-29	30-39	40-49	50+	TTL	SHAQ WASHINGTON <td>13</td> <td>79</td> <td>6.1</td> <td>0</td> <td>46</td>	13	79	6.1	0	46
Andrew Gantz	52-54	5-5	6-7	5-7	0-1	16-20	47					
RETURNS	NO	YDS	AVG	TO	LANGR	SHAQ WASHINGTON <td>13</td> <td>79</td> <td>6.1</td> <td>0</td> <td>46</td>	13	79	6.1	0	46	
KICK RETURNS	NO	YDS	AVG	TO	LANGR	JOHNNY HOLTEN <td>35</td> <td>722</td> <td>20.6</td> <td>0</td> <td>40</td>	35	722	20.6	0	40	

2014 GAME-BY-GAME STATS

ATT	OPPONENT	SCORE	TTL	FD	RUSH	AVG	PASS	CO-ATT	YDS	SKS	TTL	FD	RUSH	AVG	PASS	CO-ATT	YDS	SKS	BY	NET	YDS	TO	OFF	VS	FOE	DEF	VS	FOE	OFF	VS	FOE	GM	GRADE
31,912	Toledo	58-34	584	28	30-148	4.9	29-42	436	1	563	27	39-240	6.2	28-43	323	3	21	+1	1	#1	191	12	-79	87.8									
41,926	Miami, Oh	31-24	370	22	30-99	3.3	25-39	271	1	364	19	44-102	2.3	13-26	262	8	6	+1	#8	-70	#6	12	66.6										
108,362	at Ohio St	28-50	422	15	19-70	3.7	21-33	352	1	710	45	65-380	5.8	26-36	330	1	-288	-1	#3	85	#15	-213	82.7										
25,456	Memphis	14-41	352	19	25-97	3.9	16-40	255	2	610	30	69-299	4.3	18-25	311	0	-258	-2	#7	3	#13	-198	56.1										
43,953	at Miami, FL	34-55	422	26	29-67	2.3	31-60	355	3	621	20	35-335	9.6	17-25	286	3	-199	-2	#2	100	#13	-207	71.1										
16,849	at SMU	41-3	508	29	46-240	5.2	17-27	268	1	276	14	24-98	4.1	20-37	178	3	232	+4	#6	9	#8	-8	86.8										
30,024	USF	34-17	590	31	50-273	5.5	27-37	317	1	281	12	22-42	1.9	20-33	239	1	309	+1	#1	204	#7	26	87.7										
21,414	at Tulane	38-14	479	21	35-265	7.6	17-26	214	0	380	21	33-175	5.3	24-35	205	2	99	-2	#3	99	#10	-36	88.2										
19,113	East Carolina	54-46	586	29	33-150	4.5	29-45	436	1	579	30	32-154	4.8	35-62	425	4	7	-2	#1	237	#9	-50	87.2										
24,012	at Connecticut	41-0	425	24	48-249	5.2	20-36	176	0	129	10	27-48	1.8	14-27	81	2	296	+2	#4	51	#1	161	96.3										
21,255	at Temple	14-6	255	14	33-81	2.5	19-31	174	1	267	14	32-71	2.2	19-35	196	3	-12	+1	#11	-100	#4	45	79.4										
24,606	Houston	38-31	500	33	43-152	3.5	25-38	348	4	594	27	35-234	6.7	27-45	360	2	-94	-1	#2	170	#13	-195	76.0										
34,277	† Virginia Tech	17-33	489	19	33-144	4.4	18-37	345	2	334	18																						