

# PITTSBURGH STEELERS

**AFC NORTH**  
**12-4 1st Place**



**2008 12-4**

PT DIF H A DIV  
+124 6-2 6-2 6-0

## LEADERS

QB	Ben Roethlisberger	3301 yds, 281-469 (59.9%), 17-15, 80.1 rat
RB	Willie Parker	791 yds, 210 att, 3.8 ypc, long 34, 5 TD's
REC	Hines Ward	1043 yds, 81 rec, 12.9 ypc, long 49, 7 TD's
SCR	Jeff Reed	117 pts, 27 FG's, 36 XP's
TKL	James Farrior	113 tk's, 87 solo

**2007 10-6**

PT DIF H A DIV  
+124 7-1 3-5 5-1

## LEADERS

QB	Ben Roethlisberger	3154 yds, 264-404 (65.3%), 32-11, 104.1 rat
RB	Willie Parker	1316 yds, 321 att, 4.1 ypc, long 32, 2 TD's
REC	Santonio Holmes	942 yds, 52 rec, 18.1 ypc, long 83, 8 TD's
SCR	Jeff Reed	113 pts, 23 FG's, 44 XP's
TKL	James Harrison	98 tk's, 76 solo

**2006 8-8**

PT DIF H A DIV  
+38 5-3 3-5 3-3

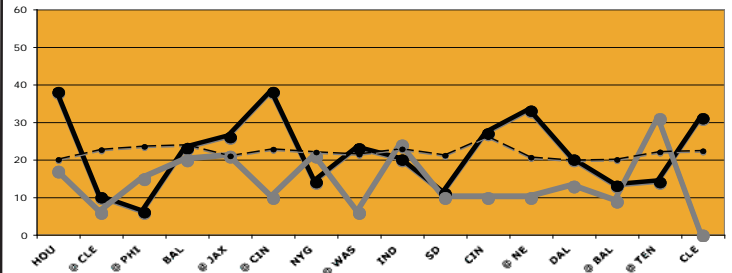
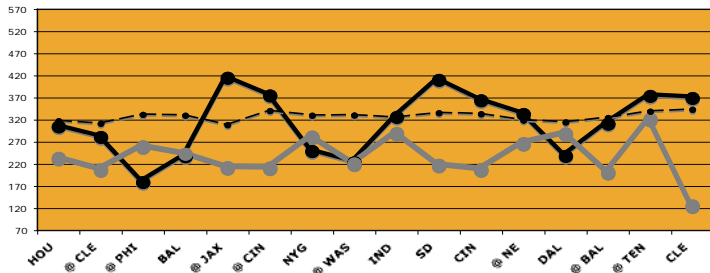
## LEADERS

QB	Ben Roethlisberger	3515 yds, 280-469 (59.7%), 18-23, 75.4 rat
RB	Willie Parker	1494 yds, 337 att, 4.4 ypc, long 76, 13 TD's
REC	Hines Ward	975 yds, 74 rec, 13.2 ypc, long 70, 6 TD's
SCR	Jeff Reed	101 pts, 20 FG's, 41 XP's
TKL	James Farrior	128 tk's, 85 solo

**2008 Offensive YPG: #22 • 2008 Defensive YPG: #1**

TM: Team Color • OPP: Grey  
Dotted Line = NFL AVG

**2008 Offensive PPG: #20 • 2008 Defensive PPG: #1**



## 2008 GAME-BY-GAME STATS

OPPONENT	OFFENSE						DEFENSE						SIS BY TURN	Game Grade	Season Rank	NFL Rank
	FD	Rush-YDS	AVG	CG-ATT	YDS	SKS	FD	Rush-YDS	AVG	CG-ATT	YDS	SKS				
Houston	21	39-183	4.7	13-18	122	2	20	20-75	3.8	25-33	159	5	+2	91.0	2	15
at Cleveland	14	31-117	3.8	13-20	164	2	17	25-53	2.1	18-32	155	2	+2	56.1	13	213
at Philadelphia	14	19-32	1.7	17-32	147	9	16	23-65	2.8	26-38	195	3	0	27.2	19	454
Baltimore	11	28-69	2.5	14-24	168	3	16	33-103	3.1	16-31	140	5	0	60.2	10	177
at Jacksonville	28	26-129	5.0	26-41	286	3	14	19-38	2.0	18-32	175	3	-1	83.1	4	39
at Cincinnati	20	27-125	4.6	20-31	250	0	16	22-84	3.8	24-39	128	7	+1	69.0	9	114
NY Giants	12	22-95	4.3	13-29	154	5	14	35-83	2.4	19-32	199	0	-4	51.7	14	258
at Washington	15	29-64	2.2	12-27	160	5	13	15-60	4.0	24-43	161	7	+1	60.2	11	178
Indianapolis	18	27-59	2.2	29-41	267	2	17	19-62	3.3	21-40	228	2	-3	49.8	15	280
San Diego	24	28-124	4.4	31-41	286	4	16	22-66	3.0	15-26	152	2	+2	84.7	3	34
Cincinnati	20	37-121	3.3	17-30	243	0	11	20-43	2.2	20-37	165	1	0	59.1	12	185
at New England	19	34-161	4.7	17-33	172	1	19	20-122	6.1	19-39	145	5	+4	72.1	8	96
Dallas	13	26-70	2.7	17-33	168	5	15	26-95	3.7	19-36	194	3	+3	38.8	17	381
at Baltimore	18	27-91	3.4	22-40	220	3	12	31-112	3.6	11-28	90	2	0	73.2	7	85
at Tennessee	23	25-73	2.9	25-39	301	5	16	31-117	3.8	20-29	205	1	-4	35.5	18	401
Cleveland	20	35-176	5.0	17-27	193	0	8	29-106	3.7	6-18	20	3	0	82.2	5	42
San Diego	22	42-165	3.9	17-27	177	1	15	11-15	1.4	21-35	275	4	+2	96.0	1	8
Baltimore	11	28-52	1.9	16-33	223	4	13	25-73	2.9	13-30	125	3	+3	78.4	6	60
at Arizona	20	12-33	2.8	21-30	234	3	23	12-33	2.8	31-43	374	2	+1	48.1	16	295
TOTALS	343	542-1939	3.6	357-596	3935	57	291	438-1405	3.2	366-641	3285	60	+9	1069		
AVERAGES	18	29-102	3.6	19-31	207	3.0	15	23-74	3.2	19-34	173	3.2	+0.5	56.3	(5)	174.5

QB Ben Roethlisberger



## 2008 GAME-BY-GAME PLAYER STATS

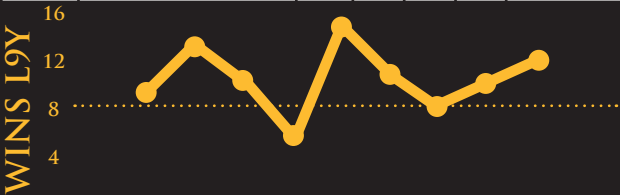
BLACK: DNP  
GOLD: TM LEADER

	WK 1	WK 2	WK 3	WK 4	WK 5	WK 6	WK 7	WK 8	WK 9	WK 10	WK 11	WK 12	WK 13	WK 14	WK 15	WK 16	WK 17	WC	CSF	CF	SB	TOTALS
	HOU	@Cle	@Phi	BAL	@Jax	Bye	@Cin	NYG	@Was	IND	SD	CIN	@NE	DAL	@Bal	@Ten	CLE	Bye	SD	BAL	@Arz	
QB'S	Ben Roethlisberger	13-14	13-20	13-25	14-24	26-41	17-28	13-29	5-17	29-41	31-41	17-30	17-33	17-33	22-40	25-39	9-14	17-26	16-33	21-30		335-558
		137 2-0	179 1-0	131 0-1	191 1-1	309 3-1	216 2-0	189 1-4	50 0-1	280 0-3	308 0-0	243 1-0	179 2-1	204 1-0	246 1-0	329 2-2	110 0-1	181 1-0	255 1-0	256 1-1		3993 20-16
	Byron Leftwich	0-4			4-7		3-3		7-10								7-12	0-1				21-37
RB'S	Willie Parker	25-138-3	28-105	13-20			21-70-1				25-115	14-37	16-87	12-25	14-47	19-31	23-116-1	27-146-2	24-47	19-53		280-1037-7
	Mewelde Moore			1-6	8-13	17-99	20-120-2	19-84-1	4-(-2)	24-57-2	1-(-1)	15-56	12-67	5-22	7-16	3-28	4-23	3-13	1-6	1-6		145-613-5
	Ben Roethlisberger	2-17	1-0	4-6	2-3	2-2	2-(-1)	1-3	1-1-1	1-(-1)		3-13-1	3-6	5-17	4-21	3-14			2-(-2)	3-2		39-101-2
REC'S	Gary Russell				6-25		4-0	1-8			2-10	3-5-1	3-1-1	4-6	1-1		4-21-1		0-0	2-(-3)-1		34-79-5
	Hines Ward	6-76-2	5-59-1	4-34	2-57	7-90-1	4-60-1	3-30	3-39	8-112	11-124	1-37	5-37-1	1-2	8-107	7-109-1	6-70	4-70	3-55	2-43		90-1211-7
	Santonio Holmes	2-19	5-94	3-32	3-61-1	4-65	5-89		3-30-1	4-29	5-63	5-84	2-28-1	3-82	3-21-1	5-93-1	3-31	2-25	2-70-1	9-131-1		68-1047-7
TACKLERS	Nate Washington			5-51	2-23	6-94	2-57-1	1-65-1	2-59	3-30	2-14	1-12	3-41	4-58	5-76	3-38	1-13	3-30	3-21	1-11		47-693-3
	Heath Miller	3-26	2-33	4-63	2-8	5-45	2-13	3-52				4-44-1	4-60	3-20-1	3-26	8-69	5-55	3-37-1	3-62	5-57		59-670-4
	Mewelde Moore				3-37	3-17	5-14-1	2-10	3-45	6-48	5-33	4-41	2-9	4-36		2-20	1-10	2-12	1-9	1-4		44-345-1
	Matt Spaeth	1-6					1-6		1-6	6-53	6-55		1-4	1-6						1-6		18-142
	Limas Sweed						1-11	3-28				2-25							2-20	0-0		8-84
	Carey Davis	1-10			1-(-1)			1-4						1-0			1-14	3-7	1-20	1-6		10-60
	James Farrior	5-2	5-5	7-7	8-5	3-2	11-6	11-6	13-11	3-3	4-2	11-8	7-3	12-6	12-8	14-10	7-3	9-7	9-6	7-6		158-106
	James Harrison	9-7	4-4	3-2	11-6	4-3	5-3	4-2	11-7	12-9	4-2	3-2	10-7	9-6	5-3	7-4		4-2	6-5	4-3		115-77
	Ryan Clark	8-6	2-2	5-5	7-1	5-4	6-5	9-6		3-3	5-2	6-2	6-4	9-3	6-2	10-7		2-2	8-8	5-2		102-64
	Troy Polamalu	3-3	4-4	5-5	9-4	4-4	5-2	3-1	3-2	4-3	3-3	6-6	5-3	9-7	2-2	5-3	3-2	3-2	4-3	2-0		82-59
	Lawrence Timmons	4-4	2-1	2-2	4-3	1-0	10-7	3-1	4-3	5-4	2-2	3-1	5-3	3-2	5-5	3-3	9-2	6-3	5-4	5-5		81-55
	Ike Taylor	6-6	6-6	4-4	3-1	3-2	3-3	6-3	3-3	6-6	3-2	5-3	0-0	3-1	4-3	7-6	3-1	3-3	4-3	8-5		80-61
	LaMarr Woodley	3-3	3-3	3-2	8-5	6-6	4-2	5-3	5-3	3-3	3-1	5-4	5-3	2-1	3-1	2-1		5-4	7-5	4-3		76-53
	Larry Foote	4-1	6-4	4-3	6-3	3-2	1-0	4-3	1-0	3-1	5-3	3-1	4-2	1-1	5-3	6-2	7-5	5-5	2-1	2-2		72-42
	Aaron Smith	2-1	4-4	2-2	6-2	5-4	1-1	3-2	3-3	4-3	3-2	3-2	5-3	4-2	8-7	2-2	5-4	1-1	4-1	1-0		66-46
	Brett Keisel	5-3	0-0				1-1	11-6	2-1	4-1	7-6	5-1				1-0	5-3	4-3	1-0	5-4		51-29
	Travis Kirschke	3-3	3-3	7-6	7-3	1-1	2-1	0-0	1-0	1-1	2-2	1-0	3-1	6-4	7-4	0-0	2-1	0-0	1-0	1-1		48-31
	Bryant McFadden	5-4	5-5	6-5	5-5	4-3	5-4							2-2	4-4	2-2	3-3	1-1	0-0	3-3		45-41
	William Gay	2-1	0-0	2-2	0-0	1-1	2-2	3-1	5-3	2-1	3-3	7-5	5-5	4-4	1-1	3-3	1-1	0-0	1-1	2-2		44-36
	Casey Hampton	2-0	1-1	0-0				6-5	2-2	0-0	0-0	2-0	2-2	3-1	3-2	0-0	1-0	1-0	4-1	2-1		29-15
	Deshaea Townsend	2-1			1-0	1-1	1-1	4-4	2-2	2-1			2-1	3-3	1-1	1-1	0-0	0-0	1-1	3-2		24-19
	Anthony Madison	0-0	1-1	1-1	2-2	3-3	1-1	2-1	0-0	1-1	1-1	1-1	3-3	0-0	1-1	1-1	1-0	0-0	3-3	2-2		24-22
	Keyaron Fox	0-0	3-3	1-0	0-0	0-0				0-0	0-0	2-1	2-1	3-1	1-1	1-1	4-3	2-1	3-0	0-0		22-12
	Nick Eason	4-2	1-1	0-0	3-2		0-0	1-1	1-1	3-1	0-0	0-0	2-1	0-0	0-0	1-1	1-0	0-0	1-1	0-0		18-11

# PITTSBURGH STEELERS

Pittsburgh, Pennsylvania weather.com: zip code 15203

Date	Opponent	Line	Score	W/L	DATE	OPP	LINE	SCORE	SU	ATS	DATE	OPP	LINE	SCORE	SU	ATS	Team Angles
Sep 10	Tennessee (Thur)				12/21/2008	@ TEN	-2.5	14-31	L	L	9/28/2003	TEN	-3	13-30	L	L	Including playoffs, the Steelers have lost 4 of their last 5 meetings with the Titans.
Sep 20	at Chicago				9/11/2005	TEN	-7	34-7	W	W	11/17/2002	@ TEN	-3	23-31	L	L	Dating back to 1995, the Steelers have won 3 straight games against the Bears.
Sep 27	at Cincinnati				12/11/2005	CHI	-6.5	21-9	W	W	12/31/2006	@ CIN	+6	23-17	W	W	The Steelers have won 8 consecutive road games in Cincinnati after LY's 38-10 victory.
Oct 4	San Diego (Night)				10/19/2008	@ CIN	-9.5	38-10	W	W	10/23/2005	@ CIN	+1.5	27-13	W	W	Including both wins LY (regular season & playoffs), the Steelers have won 12 of 14 games vs SD.
Oct 11	at Detroit				11/16/2008	SD	-5	24-13	W	L	10/10/2005	@ SD	+3	24-22	W	L	Pittsburgh has won 5 of their last 6 meetings with the Lions dating back to 1989.
Oct 18	Cleveland				10/8/2006	@ SD	+3.5	13-23	L	L	12/21/2003	SD	-6.5	40-24	W	W	In LY's home finale vs CLE, the Steelers held the Browns to just 126 yards in the 31-0 win.
Oct 25	Minnesota				1/1/2006	DET	-16.5	35-21	W	L	12/7/2006	CLE	-7	27-7	W	W	Prior to taking over as the Steelers HC, Mike Tomlin spent 2006 as the Vikings Defensive Coordinator.
Nov 1	BYE WEEK				12/23/2001	DET	-10	47-14	W	W	11/13/2005	CLE	-7.5	34-21	W	W	
Nov 9	at Denver (Mon)				12/28/2008	CLE	-11	31-0	W	W							
Nov 15	Cincinnati				11/11/2007	CLE	-10	31-28	W	L							
Nov 22	at Kansas City				12/18/2005	@ MIN	-4	18-3	W	W							
Nov 29	at Baltimore (Night)				12/22/2001	MIN	-8.5	21-16	W	L							
Dec 6	Oakland				Last 4 Meetings Since 2001. Division is L/4 at Site												
Dec 10	at Cleveland (Thur)				10/21/2007	@ DEN	-3.5	28-31	L	L	10/12/2003	@ DEN	+7	14-17	L	W	Pittsburgh has won 4 consecutive MNF games holding their opponents to just 8 ppg in that span.
Dec 20	Green Bay				11/5/2006	DEN	-3	20-31	L	L	11/20/2008	CIN	-11	27-10	W	W	The Steelers have won their last 2 games hosting the Bengals including LY's 27-10 victory.
Dec 27	Baltimore				12/2/2007	CIN	-7	24-10	W	W	9/24/2006	CIN	-1.5	20-28	L	L	Heading into 2009, the Steelers have lost 3 consecutive visits to AFC West teams.
Jan 3	at Miami				10/15/2006	KC	-6.5	45-7	W	W	10/14/2001	@ KC	+2	20-17	W	W	With their AFC Championship win, the Steelers delivered a 3 game sweep of the Ravens last season.
					9/14/2003	@ KC	+3	20-41	L	L	11/26/2006	@ BAL	+3	0-27	L	L	The Steelers have won 3 of their last 4 home meetings against the Raiders since 2000.
					12/14/2008	@ BAL	+3	13-9	W	W	11/20/2005	@ BAL	-3.5	13-16	L	L	Heading into 2009, PIT has won 17 of their last 18 matchups with the Browns (playoffs included).
					12/30/2007	@ BAL	-3	21-27	L	L	12/24/2005	@ CLE	-6.5	41-0	W	W	Entering 2009, the Steelers have won 11 of their last 12 home games against NFC members.
					10/29/2006	@ OAK	-9	13-20	L	L							
					9/12/2004	OAK	-4	24-21	W	L	9/15/2002	OAK	-4	17-30	L	L	PIT or BAL have won or had a share of the AFC North Title every year since the division was established in 2002.
					9/14/2008	@ CLE	-6	10-6	W	L	11/19/2006	@ CLE	-3.5	24-20	W	W	In their previous matchup in 2007 (MNF), PIT nailed a 24 yd FG w/:17 left to pull out the win in the mud, 3-0.
					9/9/2007	@ CLE	-4.5	34-7	W	W	12/24/2005	@ CLE	-6.5	41-0	W	W	
					11/6/2005	@ GB	-3.5	20-10	W	W							
					9/29/2008	BAL	-6	23-20	W	L	12/24/2006	BAL	-3.5	7-31	L	L	
					11/5/2007	BAL	-9	38-7	W	W	10/31/2005	BAL	-11.5	20-19	W	L	
					11/26/2007	MIA	-15.5	3-0	W	L	9/26/2004	@ MIA	+1.5	13-3	W	W	
					9/7/2006	MIA	-1	28-17	W	W							



	2000	2001	2002	2003	2004	2005	2006	2007	2008	9Yr Total
<b>STRAIGHT UP</b>	9-7	13-3	10-5-1	6-10	15-1	11-5	8-8	10-6	12-4	94-49-1
Home	4-4	7-1	5-2-1	4-4	8-0	5-3	5-3	7-1	6-2	51-20-1
Away	5-3	6-2	5-3-1	2-6	7-1	6-2	3-5	3-5	6-2	43-29-1
<b>ATS</b>	11-5	11-4-1	5-10-1	8-8	11-5	9-7	8-8	8-8	9-7	80-62-2
Home Favorite	3-2	6-2	2-6	4-4	4-2	3-5	5-3	5-3	4-4	36-31
Home Dog	2-1	0-0	0-0	0-0	2-0	0-0	0-0	0-0	0-0	4-1
Away Favorite	2-1	1-1-1	2-4	1-0	2-2	4-1	2-3	3-4	1-2	18-18-1
Away Dog	4-1	4-1	1-0-1	3-4	3-1	2-1	1-2	0-1	4-1	22-12-1
On Grass	6-2	10-4-1	5-10	7-6	8-3	7-5	7-6	6-5	6-7	62-48-1
On Turf	5-3	1-0	0-0-1	1-2	3-2	2-2	1-2	2-3	3-0	18-14-1
vs Conf	10-3	9-3-1	3-9	7-5	9-3	6-6	5-7	5-7	7-5	61-48-1
vs Non-Conf	1-2	2-1	2-1-1	1-3	2-2	3-1	3-1	3-1	2-2	19-14-1
Off SU Win	7-1	9-3	3-5-1	1-5	10-4	5-5	3-4	4-6	6-5	48-38-1
Off SU Loss	4-3	2-0-1	2-3	6-3	1-0	3-2	4-4	3-2	2-2	27-19-1
<b>FAVORITE</b>	5-3	7-3-1	4-10	5-4	6-4	7-6	7-6	8-7	5-6	54-49-1
By 3 or Less	2-2	2-1-1	1-3	0-3	0-1	0-2	2-4	0-1	0-2	7-19-1
Single Digit	4-3	6-3-1	4-8	5-4	6-2	7-4	7-6	7-5	3-6	49-41-1
Double Digit	1-0	1-0	0-2	0-0	0-2	0-2	0-0	1-2	2-0	5-8
<b>UNDERDOG</b>	6-2	4-1	1-0-1	3-4	5-1	2-1	1-2	0-1	4-1	26-13-1
By 3 or Less	1-1	3-1	0-0-1	1-2	4-0	2-0	0-1	0-0	3-0	14-5-1
Single Digit	5-2	4-1	1-0-1	3-4	5-1	2-1	1-2	0-0	4-1	25-12-1
Double Digit	1-0	0-0	0-0	0-0	0-0	0-0	0-0	0-1	0-0	1-1
<b>DIVISION</b>	7-3	6-3-1	2-4	4-2	5-1	3-3	3-3	4-2	4-2	38-23-1
Home Favorite	2-1	4-1	0-3	1-2	3-0	1-2	1-2	2-1	2-1	16-13
Home Dog	1-1	0-0	0-0	0-0	0-0	0-0	0-0	0-0	0-0	1-1
Away Favorite	1-1	0-1-1	2-1	1-0	2-0	1-1	1-0	2-1	1-1	11-6-1
Away Dog	3-0	2-1	0-0	2-0	0-1	1-0	1-0	0-0	1-0	10-3
<b>VS NON-DIV</b>	4-2	5-1	3-6-1	4-6	6-4	6-4	5-5	4-6	5-5	42-39-1
Home Favorite	1-1	2-1	2-3	3-2	1-2	2-3	4-1	3-2	2-3	20-18
Home Dog	1-0	0-0	0-0	0-0	2-0	0-0	0-0	0-0	0-0	3-0
Away Favorite	1-0	1-0	0-3	0-0	0-2	3-0	1-3	1-3	0-1	7-12
Away Dog	1-1	2-0	1-0-1	1-4	3-0	1-1	0-1	0-1	3-1	12-9-1

PITTSBURGH'S STATISTICAL NOTEBOOK - LAST 9 YEARS																											
RET	TOT	PTS	OFF	OFF	OFF	PASS	OFF	YPP	SKS	TOTAL	RET	TOT	DEF	PTS	DEF	DEF	PASS	DEF	SKS								
STR	OFF	PTS	RUSH	YAC	PASS	%	YAC	VS	VS	TURN	STR	DEF	PTS	RUSH	YPC	PASS	%	YAC	BY								
10*	312	(22)	21.7	106	(23)	3.7	206	(17)	59.9	14.4	49	(29)	4	2008	10*	237	(1)	13.9	80	(2)	3.3	157	(1)	56.5	17.1	51	(2)
10*	327	(17)	24.6	136	(3)	4.2	192	(22)	63.8	13.3	47	(25)	3	2007	10	266	(1)	16.8	90	(3)	4.0	177	(3)	54.5	15.9	36	(13)
10*	358	(7)	22.1	125	(10)	4.2	233	(9)	59.7	16.2	49	(27)	-8	2006	9*	300	(9)	19.7	88	(3)	3.5	212	(20)	60.3	15.2	39	(11)
9*	322	(15)	24.3	139	(5)	4.0	183	(24)	60.2	13.2	32	(15)	7	2005	11*	284	(4)	16.1	86	(3)	3.4	198	(16)	57.4	17.6	47	(3)
11*	324	(16)	23.3	154	(2)	4.0	170	(28)	63.7	13.9	36	(14)	11	2004	9	258	(1)	15.7	81	(1)	3.6	177	(4)	55.6	16.5	41	(7)
10*	300	(22)	23.3	93	(31)	3.3	207	(14)	57.5	12.9	42	(21)	-3	2003	10*	299	(9)	15.7	109	(12)	3.9	190	(11)	60.7	19.1	35	(17)
-	372	(5)	23.3	133	(9)	4.1	240	(7)	63.5	16.0	34	(13)	0	2002	-	302	(7)	15.7	86	(1)	3.8	216	(20)	58.6	19.3	50	(3)
-	368	(3)	23.3	173	(1)	4.8	195	(21)	60.4	15.8	31	(11)	7	2001	-	259	(1)	15.7	75	(1)	3.5	184	(4)	56.2	16.5	55	(1)
-	298	(18)	23.3	141	(4)	4.3	157	(29)	49.4	12.8	43	(19)	12	2000	-	295	(7)	15.7	106	(12)	4.0	189	(9)	53.7	18.8	39	(17)



**HEINZ FIELD**  
 OPENED 10/7/2001  
 CAPACITY: 65,050 (#25)  
 2008 ATTENDANCE: HOME: 62,890 (#28) AVG: 67,312 (#17)

2004 RESULTS					2005 RESULTS					2006 RESULTS					2007 RESULTS					2008 RESULTS				
Opponent	Line	Score	ATS	O/U	Opponent	Line	Score	ATS	O/U	Opponent	Line	Score	ATS	O/U	Opponent	Line	Score	ATS	O/U	Opponent	Line	Score	ATS	O/U
Oakland	-4	24-21	L	41' O	Tennessee	-7	34-7	W	39' O	Miami (Th)	-1	28-17	W	34' O	at Cleveland	-4'	34-7	W	35' O	Houston	-6'	38-17	W	43' O
at Baltimore	+3'	13-30	L	35' O	at Houston	-4'	27-7	W	37' U	at Jacksonville (M)	-3	0-9	L	36' U	Buffalo	-10	26-3	W	38' U	at Cleveland (N)	-6	10-6	L	44' U
at Miami	+1'	13-3	W	32 U	New England	-3	20-23	L	42 O	Cincinnati	-1'	20-28	L	42 O	San Francisco	-9'	37-16	W	37' O	at Philadelphia	+3'	6-15	L	44' U
Cincinnati	-5	28-17	W	38' O	BYE WEEK					BYE WEEK					at Arizona	-6	14-21	L	42' O	Baltimore (M) (OT)	-6	23-20	L	34' O
Cleveland	-5*	34-23	W	37 O	at San Diego (M)	+3	24-22	L	46 P	at San Diego (N)	+3'	13-23	L	37 U	Seattle	-6	21-0	W	40 U	at Jacksonville (N)	+5	26-21	W	37 O
at Dallas	+3	24-20	W	39 O	Jacksonville (OT)	-3'	17-23	L	33 O	Kansas City	-6'	45-7	W	37 O	BYE WEEK					BYE WEEK				
BYE WEEK					at Cincinnati	+1'	27-13	W	43 U	at Atlanta (OT)	-3	38-41	L	38 U	at Denver (N)	-3'	28-31	L	48 O	at Cincinnati	-9'	38-10	W	34' O
New England	+3	34-20	W	41' O	Baltimore (M)	-11'	20-19	L	34' O	at Oakland	-9	13-20	L	38' U	at Cincinnati	-3'	24-13	W	48 U	NY Giants	-3	14-21	L	42 U
Philadelphia	+1	27-3	W	44 U	at Green Bay	-3'	20-10	W	37' U	Denver	-3	20-31	L	36' O	Baltimore (M)	-9	38-7	W	36 O	at Washington (M)	+2'	23-6	W	37 U
at Cleveland	-3*	24-10	W	41' U	Cleveland (N)	-7'	34-21	W	34' O	New Orleans	-6	38-31	W	45' O	Cleveland	-10	31-28	L	47 O	Indianapolis	-4	20-24	L	39 O
at Cincinnati	-4	19-14	W	40' U	at Baltimore (OT)	-3'	13-16	L	33 U	at Cleveland	-3'	24-20	W	37' O	at NY Jets (OT)	-9'	16-19	L	40 U	San Diego	-5	11-10	L	42 U
Washington	-10'	16-7	L	35 U	at Indianapolis (M)	+8	7-26	L	47 U	at Baltimore	+3	0-27	L	40 U	Miami (M)	-15'	3-0	L	38' U	Cincinnati (Th)	-11	27-10	W	34' O
at Jacksonville	-3	17-16	L	35 U	Cincinnati	-3	31-38	L	41 O	Tampa Bay	-7	20-3	W	40 U	Cincinnati (N)	-7	24-10	W	39 U	at New England	+1'	33-10	W	38' O
NY Jets	-4	17-6	W	35 U	Chicago	-6'	21-9	W	30 P	Cleveland (Th)	-7	27-7	W	34 P	at New England	+10'	13-34	L	47' O	Dallas	+4	20-13	W	38' U
at NY Giants (S)	-10	33-30	L	35 O	at Minnesota	-4	18-3	W	40 U	at Carolina	-3	37-3	W	38' O	Jacksonville	-3'	22-29	L	35' O	at Baltimore	+3	13-9	W	33' U
Baltimore	-5	20-7	W	33' U	at Cleveland	-6'	41-10	W	32' O	Baltimore	-3'	7-31	L	36' O	at St Louis (Th)	-7	41-24	W	45' O	at Tennessee	-2'	14-31	L	34 O
at Buffalo	+9	29-24	W	33 O	Detroit	-16'	35-21	L	32 O	at Cincinnati (OT)	+6	23-17	W	44 U	at Baltimore	-3	21-27	L	35 O	Cleveland	-11	31-0	W	33 U



# PITTSBURGH STEELERS

## OFFENSIVE OUTLOOK FOR 2009

**QUARTERBACKS** - Ben Roethlisberger is a good example of why it's better to be a football player than a fantasy player. He has a 51-20 record in the regular season, is 28-8 at home, 15-4 vs the NFC and 23-4 vs AFC North foes. Most importantly he has 2 Super Bowl victories in his first 5 years and is arguably the 3rd best QB in the NFL (behind Tom Brady and Peyton Manning). Roethlisberger did put up big numbers in 2007, as he avg 210 ypg (65%) with a 32-11 ratio only to be bounced out of the playoffs by JAX at home. OC Bruce Arians was determined to try to continue the transformation to a pass-oriented team in 2008, but poor OL play limited PIT's play selection. While Roethlisberger's stats regressed to 206 ypg (60%) with a 17-15 ratio, the Steelers still won the AFC North and were the #2 seed in the AFC. He has impressive size (6'5" 241), a big arm, pocket presence, mobility and durability. One of his strengths ironically is his biggest weakness, also, as he has a tendency to hold onto the ball too long, refusing to give up on plays, which exposes him to sacks (139 sacks L3Y) and big hits (concussion 1H vs CLE in season finale). Including playoffs, Roethlisberger played 9 games vs a top 10 pass defenses LY, going 5-4 avg 208 ypg (55%) with a 7-12 ratio. Against everyone else he went 10-0 avg 212 ypg (65%) and a 13-4 ratio. The Steelers let Byron Leftwich, who did a good job in relief in '08, go after Charlie Batch landed on IR with a broken collarbone, left via FA in the offseason. Batch was re-signed in the offseason and he is a good option as a short term starter. PIT stole Dennis Dixon in the 5th RD in '08 after his stock fell due to a torn ACL. Dixon is being groomed as the long term #2 for the team. Roethlisberger is an upper echelon QB and well worth the big contract extension he got after the 2007 season.

**QB BEN ROETHLISBERGER** #7 6-5 241 Age: 27 6th Yr (16/16)  
#1DC PIT '04 - 3301 pass yds (59.9%), 17-15 ratio, **7.0 ypa**,  
**80.1 QBR**, 101 rush yds (3.0), 5 TD's 46 sks LY.  
**Charlie Batch** #10 6-2 216 Age: 34 12th Yr (0/0)  
#2DC DET '98 - Missed LY with a broken right collarbone.  
1 st, 232 pass yds (47%), 2-3 ratio, 52.1 QBR, 0 sks in '07.  
**Dennis Dixon** #2 6-3 195 Age: 24 2nd Yr (0/1)  
Hit 1-1 passing (3 yds), 2 rush att (-3 yds), 0 sks LY.  
5th round, 156th pick out of Oregon in '08.

<b>2008 QB Rating:</b>	<b>81.85 - #17</b>
<b>2009 QB 1 and 2:</b>	<b>81.82 - #20</b>
<b>2009 QB Career Start Record:</b>	<b>73-48 - #7</b>
<b>2009 QB '07-'08 Starts:</b>	<b>32 - #7</b>
<b>2009 QB Playoff Record:</b>	<b>8-2 - #2</b>
<b>NFL Player Draft Rating:</b>	<b>9.59 - #6</b>

**RUNNING BACKS** - The Steelers appeared to have a good situation at RB heading into 2008 as Willie Parker was expected to be 100% after breaking his leg in the 15th game in 2007. As an insurance policy PIT also used a 1st RD pick on Rashard Mendenhall out of Illinois. Parker was leading the NFL in rushing with 1,316 yards (4.1) while accounting for 28.2% of the offense when he went down in '07. Entering '08, he had rushed for 1,200+ yards in 3 straight seasons and despite the injury, ran a 4.4 40 in March. Parker opened the year strong with 138 yds (5.5) and 105 yds (3.8) in the 1st 2 games before a knee sprain and shoulder injury had him miss 5 of the next 7 games. Mendenhall (4.45 speed) had his shoulder broken by Ray Lewis on MNF in week 4 and was lost for the season. With Parker nursing injuries, former MIN RB Mewelde Moore stepped in with great success and kept the Steelers on the right path towards the playoffs. Moore finished the season with 588 rushing yards (4.2) while also being an important part of the receiving game as a 3rd down back with 40 rec's (8.0). Parker had 115 yds rushing (4.6) vs SD in poor weather but was held to 45 yds rushing (3.0) before the season finale vs CLE. This is the final year under contract for Parker and the team has let it be known that they intend to get the most out of him in 2009 before turning the reigns over to Mendenhall in 2010. The FB is Carey Davis, who took over for Dan Kreider in 2007. This is a formidable backfield but PIT is very comfortable with Roethlisberger being the focus of the offense instead of their traditional power run game.

**RB WILLIE PARKER** #39 5-10 209 Age: 28 6th Yr (11/11)  
UFA PIT '04 - 791 rush yds (3.8), 5 TD's, **16.1% of the offense**, out gms 4-7 and 9 with knee and shoulder injuries LY.  
**Rashard Mendenhall** #34 5-10 225 Age: 22 2nd Yr (1/4)  
#1DC PIT '08 - 58 rush yds (3.1), 2 rec's (8.5), 6 KR's (19.2), 9/30 broken left shoulder, could have returned in Dec but team needed roster spot LY.

**Mewelde Moore** #21 5-11 209 Age: 27 6th Yr (4/16)  
#4DC MIN '04 - 588 rush yds (4.2), 4 TD's, 320 rec yds (8.0), 1 TD, 10 KR (18.5), 6 PR (3.5), **18.2% of off**, 12 first downs as 3rd down RB LY.  
**FB CAREY DAVIS** #38 5-10 225 Age: 28 5th Yr (3/14)  
UFA IND '04 - 35 rush yds (2.9), 5 rec's (5.4), 6 KR (17.7), **1.2% of the offense** LY. 7 sts, 68 rush yds (4.0) in '07.

<b>2008 RB Total Yards:</b>	<b>1,983 - #26</b>
<b>2008 RB YPC:</b>	<b>4.3 - #30</b>
<b>2009 Top 3 RB:</b>	<b>1,437 (3.9) - #20</b>
<b>2009 RB Rushing ('06-'08):</b>	<b>4,491 (4.2) - #6</b>
<b>NFL Player Draft Rating:</b>	<b>8.55 - #18</b>

**RECEIVERS** - Slowly but surely there is a changing of the guard in PIT as Hines Ward is transitioning to the role of the #2 WR. This is partially due to an evolving offense that spreads around the ball more and his impressive skills as a blocking WR, which has forced the NFL to implement a major rule change for 2009. It's also due to age slowly catching up to him. Ward remains a very reliable WR (162 regular season straight games with a reception) and he has led the team in receptions in each of the last 7 years, including 2008 when he had 81 for 1,043 yards. Antonio Holmes had an inconsistent rookie season but bounced back nicely over the past 2 seasons leading the team in receiving yards in 2007 and making the unbelievable game-winning TD reception in Super Bowl XLIII. Holmes, however, needs to stay focused on football as he dealt with some off-field problems last season resulting in a 1 game suspension. Prior to the 2008 draft, Roethlisberger mentioned that he would like to add a tall WR to the team which stirred up some comments from Ward. The Steelers selected 6'4" Limas Sweed out of Texas in the 2nd round to help meet Big Ben's requests. Sweed struggled as a rookie playing in just 11 games with 6 receptions as he battled a wrist injury from his days at Texas. Due to his struggles and the departure of reliable #3 WR Nate Wahington (104 rec L3Y via FA), PIT brought in journeyman Shaun McDonald and used a 3rd RD pick on Mike Wallace out of Ole Miss. PIT has a great TE combo in Heath Miller and Matt Spaeth, as they generally line up with both rather than using FB. Miller also battled some injury issues last season, missing 2, but remains a formidable RZ threat for Roethlisberger. Spaeth is a short area receiving TE who is much better as an in line blocking TE. This could be the year that Holmes replaces Ward as the #1 WR and the Steelers' receiving corps remains one of the NFL's best.

**WR HINES WARD** #86 6-0 205 Age: 33 12th Yr (15/16)  
#3DC PIT '98 - 1043 rec yds (12.9), 7 TD's, **21.0% of off** LY.  
9780 rec yds (12.2), 72 TD in his career, all with PIT.  
**Limas Sweed** #14 6-4 220 Age: 24 2nd Yr (0/11)  
#2DC PIT '08 - 64 rec yds (10.7), inactive first 5 gms of his rookie year.  
**WR SANTONIO HOLMES** #10 5-11 201 Age: 25 4th Yr (15/15)  
#1DC PIT '06 - 821 rec yds (14.9), 5 TD's, **16.6% of the off**, susp for gm 7 LY. 2587 rec yds (16.6), 15 TD's in career.  
**Shaun McDonald** #87 5-10 183 Age: 28 7th Yr (7/12)  
#4DC STL '03 - 332 rec yds (9.5), 1 TD, 11 PR's (9.5), **8.7% of DET's off** LY. 7 sts, 943 rec yds (11.9), 11 PR's (9.5) in '07.  
**TE HEATH MILLER** #83 6-5 256 Age: 27 5th Yr (14/14)  
#1DC PIT '05 - 514 rec yds (10.7), 3 TD's, **10.3% of off**, missed 2 (ankle) LY. 16 sts, 10.8% of off in '07.  
**Matt Spaeth** #89 6-7 270 Age: 24 3rd Yr (13/16)  
#3DC PIT '07 - 136 rec yds (8.0), **2.7% of the offense** LY.  
5 sts, 5 rec (6.8) in his rookie year.

<b>2008 WR/TE Total Yards:</b>	<b>2,625 - #18</b>
<b>2008 WR/TE YPC:</b>	<b>12.3 - #15</b>
<b>2009 Top 6 WR/TE '08 Stats:</b>	<b>2,910 (12.0) - #10</b>
<b>2009 Top 6 WR/TE Rec Yds ('06-'08):</b>	<b>5,337 (14.0) - #8</b>
<b>NFL Player Draft Rating:</b>	<b>8.73 - #4</b>

**OFFENSIVE LINE** - When Jeff Hartings retired after the 2005 season it left a huge hole in the PIT OL resulting in Roethlisberger being sacked 139 times from 2006-08. PIT only had 2 games in 2007 in which they didn't allow a sack, while they allowed 3 or more in 10, including a jaw-dropping 7 vs the Jets. They ended the year 26th in the league in sacks allowed. The Steelers were very solid in the run game, however, as they had 12 games with 100+ yards rushing, averaging 136 ypg (4.2) which was 3rd best in the NFL. PIT signed Sean Mahan in 2007 to fill the void left by Hartings, but he failed to mount an effective push at the

2008 TEAM LEADERS

RUSHING	ATT	YDS	AVG	TD	LONG	
Willie Parker	210	791	3.8	5	34	
Mewelde Moore	140	588	4.2	5	32	
Ben Roethlisberger	34	101	3	2	17	
Gary Russell	28	77	2.8	3	15	
PASSING	ATT	COMP	PCT	YDS	TD	INT
Ben Roethlisberger	469	281	59.9	3301	17	15
Byron Leftwich	36	21	58.3	303	2	0
RECEIVING	REC	YDS	AVG	TD	LONG	
Hines Ward	81	1043	12.9	7	49	
Santonio Holmes	55	821	14.9	5	48	
Nate Washington	40	631	15.8	3	65	
Heath Miller	48	514	10.7	3	22	
Mewelde Moore	40	320	8	1	25	
Matt Spaeth	17	136	8	0	13	
Limas Sweed	6	64	10.7	0	17	
Shaun McDonald (from DET)	35	332	9.5	1	26	
PLAYER	TKL	SK	TFL	INT	PBU	
James Farrior	133	3.5	5	0	5	
James Harrison	101	16	3	1	3	
Ryan Clark	87	0	0	1	6	
Troy Polamalu	73	0	5	7	17	
Ike Taylor	65	0	0	1	14	
Lawrence Timmons	65	5	2	1	3	
Larry Foote	63	1.5	2	0	3	
Aaron Smith	60	5.5	3	0	4	
LaMarr Woodley	60	11.5	5	1	2	
Travis Kirschke	46	2	1	0	0	
Brett Keisel	41	1	3	0	2	
Bryant McFadden	41	1	1	2	8	
William Gay	41	0	1	1	7	
Casey Hampton	22	1	0	0	1	
Keiwan Ratliff (from IND)	32	0	1	2	5	

point of attack and lost his job to Justin Hartwig last year who came over from the Panthers. PIT decided that they couldn't afford to keep one of the best OG's in the NFL in Alan Faneca and allowed him to sign with the Jets. Replacing Faneca last season was Chris Kemoatu who struggled at times in the passing game allowing 7.5 sacks. RG Kendall Simmons was let go in Feb '09 after missing all but 4 games last year with a torn Achilles'. Competing for the vacated spot will be last season's fill-in Darnell Stapleton and 2009 3rd RD draft selection Kraig Urbik out of Wisconsin. The OT's remain intact in Willie Colon and Max Starks. Both have shown a good upside in the area of run-blocking but pass protection is another issue, especially with Colon who allowed 12 sacks in 2007 (6 LY). Most of the struggles in the run game last season (106 ypg, 3.7) were a result of the injuries at the RB position rather than blocking issues. The Steelers finished 15th in the NFL in the RZ with 27 TD's on 49 opportunities. Despite the struggles the unit has faced, the team finds a way to win by minimizing mistakes and ball control and this is an average unit at best. Fortunately, the Steelers surround them with playmakers which helps to deflect away some of the criticism they have recently received.

**LT MAX STARKS** #78 6-8 345 Age: 27 6th Yr (11/16)  
#3DC PIT '04 - 2 penalties, 4 sacks allowed, started last 11 at LT, inactive first 5 of '08. 4 sts in '07. 14 sts '06 and 16 sts '05.  
**Tony Hills** #60 6-5 304 Age: 24 2nd Yr (0/0)  
#4DC PIT '08 - No game action, on practice squad most of LY.  
**LG CHRIS KEMOEATU** #68 6-3 344 Age: 26 5th Yr (16/16)  
#6DC PIT '05 - 6 penalties, 7.5 sacks allowed LY.  
16 gms, 1 pen, 0 sks all'd in '07.  
**Jeremy Parquet** #65 6-6 321 Age: 27 5th Yr (0/2)  
#7DC KC '05 - 2 gms, on practice squad most of yr as a rookie.  
**C JUSTIN HARTWIG** #62 6-4 312 Age: 30 8th Yr (16/16)  
#6DC TEN '02 - 2 penalties, 6.5 sacks allowed LY.  
15 sts, 7 pen, 5 sks all'd with CAR in '07. 1 st with CAR '06.  
**AQ Shipley** #61 6-1 297 Age: 23 Rookie  
#7DC PIT '09 - 7th round, 226th pick out of Penn St.  
2008 RIMINGTON Award winner (nation's best C).  
**RG KRAIG URBIK** #65 6-5 328 Age: 24 Rookie  
#3DC PIT '09 - 3rd round, 79th pick out of Wisconsin.  
A four year starter with the Badgers.  
**Darnell Stapleton** #72 6-3 305 Age: 24 3rd Yr (12/16)  
UFA PIT '07 - 4 penalties, 5 sacks allowed, 12 sts at RG after Kendall Simmons put on IR. No gm action as a rookie.  
**RT WILLIE COLON** #74 6-3 315 Age: 26 4th Yr (16/16)  
#4DC PIT '06 - 11 penalties, 6 sacks allowed LY.  
Took 100% of the off snaps in '07. 2 sts (inj) in '06.  
**Trai Essex** #79 6-4 324 Age: 26 5th Yr (0/7)  
#3DC PIT '05 - 0 penalties, 0.5 sacks allowed last year.  
3 gms in '07. 15 gms in '06. 4 sts in '05.

<b>2008 Rush Yds/YPC Production:</b>	<b>1,689/3.67 - #28</b>
<b>% Sacks Allowed/QB Hurries:</b>	<b>9.68%/78- #28</b>
<b>2009 OL Players '08 Starts:</b>	<b>71 - #22</b>
<b>2009 OL Career Starts:</b>	<b>192 - #29</b>
<b>Avg Starters Ht/Wt:</b>	<b>6'5"/329 - #3</b>
<b>NFL Player Draft Rating:</b>	<b>6.42 - #32</b>



## DEFENSIVE OUTLOOK FOR 2009

**DEFENSIVE LINE** - The 2008 Steelers defense was even better than its #1 ranking as they were 55 rushing yards allowed away from being the first team to lead the NFL in total defense, pass defense, scoring defense and rushing defense since the Chiefs in 1969. They held each of their first 14 foes to 300 yds or less of total offense. The Steelers own the blueprint for constructing the modern 3-4 and the good news is that this DL will be the 4th year their 3 DL will be starting together. The bad news is that all 3 DL will be 31 years or older this season. The Steelers only allowed 80 ypg rushing (3.3) in 2008 and over the past 82 games have only allowed three 100 yd rushers (Fred Taylor 147, Thomas Jones 117, Edgerrin James 124). While the 2008 DL only accounted for 10 of the Steelers' 51 sacks they do an excellent job of tying up opposing OL to open gaps for the LB's to make plays. Casey Hampton is one of the NFL's most dominant 3-4 NT's in the NFL and is one of the reasons teams are moving to larger centers for power blocking. Hampton rotates heavily at NT with Chris Hoke to stay fresh for the running downs. Hoke could easily start for 5 of the 9 teams running a 3-4 this season. Aaron Smith is one of the best 5 technique players in a 3-4 defense in the NFL who is equally effective vs the run and pass as he showed with 60 tackles and 5.5 sacks. Brett Keisel is an athletic DE and it isn't unusual to see him drop into the firezone blitzes the team employs. Travis Kirschke is the primary backup DE and can start in short stretches but at 35 he is best employed as a situational depth player. The Steelers made a shrewd move for the future as they drafted Ziggy Hood at the end of the 1st RD. PIT has the time and talent on hand to let Hood gradually learn the system in 2009 while he hits the weight room to prepare for 2010. PIT finished 2007 20th in 3rd down defense (40.5%) but topped the rankings in 2008 allowing 31%. With the return of all 3 starters and key players combined with the addition of youth in Hood this is a very good group that typifies the PIT tradition of toughness in 2009.

**LE AARON SMITH #91** 6-5 298 Age: 33 11th Yr (16/16)

#4DC PIT '99 - 60 tkls, 5.5 sks, 3 tfl, 4 pbu last year.

11 sts, 31 tkls, tore biceps vs NE in '07.

**Travis Kirschke #90** 6-3 298 Age: 35 13th Yr (6/16)

UFA DET '97 - 46 tkls, 2 sks, 1 tfl last year.

4 sts, 26 tkls in '07.

**NT CASEY HAMPTON #98** 6-1 325 Age: 32 9th Yr (13/13)

#1DC PIT '01 - 22 tkls, 1 sk, 1 pbu last year.

15 sts (hamstring strain), 33 tkls in '07.

**Chris Hoke #76** 6-2 305 Age: 33 9th Yr (3/16)

UFA PIT '01 - 16 tkls, 0.5 sks, 1 tfl last year.

1 st, 16 gms, 6 tkls in '07.

**RE BRETT KEISEL #99** 6-5 285 Age: 31 8th Yr (10/10)

#7DC PIT '02 - 41 tkls, 1 sk, 3 tfl, 2 pbu, missed time with a calf inj LY. 16 sts, 39 tkls, 7 pbu in '07.

**Ziggy Hood #96** 6-3 300 Age: 22 Rookie

1st round, 32nd pick from Missouri.

Earned 1st Tm All-Big 12 honors last year.

**2008 DL Sacks and TFL: 11.5-7.0 - #28**

**2008 Total Tackles by DL: 208 - #25**

**2009 DL Sacks and TFL: 10.0-6.5 - #26**

**2009 Total Tackles by DL: 185 - #20**

**2009 DL Sacks and TFL ('06-'08): 29.5-19.0 - #24**

**NFL Player Draft Rating: 8.73 - #10**

**LINEBACKERS** - This is the core of the Steelers defense and the best LB unit in the NFL. PIT LB's combined for 38.5 of the team's 51 sacks in 2008 which is the 2nd most in NFL history (2006 Chargers 42.5 sacks by LB's). James Harrison is the latest PIT LB to dominate the NFL becoming the 1st UFA to win the NFL's Defensive MVP Award with a team record 16 sacks (4th in NFL). He was credited with 34 QB pressures by the team and led the NFL with 7 forced fumbles which shows just how big of a hitter he is. A year after only playing in 80 snaps due to a hamstring injury, LaMarr Woodley had 11.5 sacks on the year, despite missing the IND game with a calf injury. The ILB spots are led by James Farrior and Lawrence Timmons with Farrior having led the team in tackles 3 of the L/4 seasons. Timmons saw most of his time in nickel situations but with Larry Foote (16 sts, 63 tkls) departing he steps right into the starting lineup and is actually an upgrade in terms of overall athleticism. While the starters are top-notch PIT doesn't have any experienced backups. Second year LB Bruce Davis only played in 5 games on special teams as a rookie as he was making the switch from college DE to OLB. Keyaron Fox is the top ILB backup here but he's a career special teamer with limited abilities. PIT finished 2008 with an NFL best 223 points allowed (13.9 ppg) which was their fewest since they gave up 212 in 2001.

**LOLB LaMARR WOODLEY #59** 6-2 265 Age: 24 3rd Yr (15/15)

#2DC PIT '07 - 60 tkls, 11.5 (#2 tm), 5 tfl, 2 pbu, 1 int LY.

13 gms, 14 tkls in his rookie year in '07.

**Andre Frazier #54** 6-5 245 Age: 27 5th Yr (0/15)

UFA PIT '05 - 10 tkls, 1 sk last year.

10 gms, 10 tkls in '07.

**LILB JAMES FARRIOR #51** 6-2 243 Age: 34 13th Yr (16/16)

#1DC NYJ '97 - 133 tkls (#1 tm), 3.5 sks, 5 tfl, 5 pbu LY.

16 sts, took 98.7% of the defensive snaps in '07.

**Keyaron Fox #57** 6-3 235 Age: 27 6th Yr (0/13)

#3DC KC '04 - 17 tkls as backup LB and on spec tms LY.

10 gms, 21 tkls with KC in '07.

**RILB LAWRENCE TIMMONS #94** 6-1 234 Age: 23 3rd Yr (2/16)

#1DC PIT '07 - 65 tkls, 5 sks, 2 tfl, 3 pbu, 1 int last year.

16 gms, 13 tkls, slowed by a groin strain in '07.

**Patrick Bailey #55** 6-4 235 Age: 23 2nd Yr (0/12)

UFA PIT '08 - 16 tkls in his rookie year.

**ROLB JAMES HARRISON #92** 6-0 242 Age: 31 6th Yr (15/15)

UFA PIT '02 - 101 tkls (#2 tm), 16 sks (#1), 3 tfl, 3 pbu, 1 int, 7 FF,

rested gm 16. NFL's Def MVP with 16 sts, tms #1 tklr, #1 sks in '07.

**Bruce Davis #53** 6-3 252 Age: 24 2nd Yr (0/5)

#3DC PIT '08 - 5 gms, 0 tkls in his rookie season.

3rd round, 88th pick out of UCLA in '08.

**2008 LB Sacks and TFL: 38.5-13.0 - #2**

**2008 Total Tackles by LB: 409 - #3**

**2009 LB '08 Sacks and TFL: 37.0-11.5 - #1**

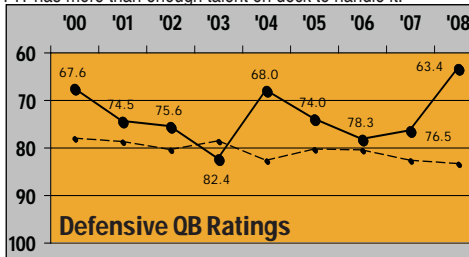
**2009 LB Total '08 Tackles: 346 - #6**

**2009 LB Sacks and TFL ('06-'08): 60.0-27.5 - #5**

**NFL Player Draft Rating: 9.13 - #1**

**DEFENSIVE BACKS** - After finishing third in the NFL with 177

ypg passing allowed in 2007, the Steelers, with the aid of a ruthless pass rush, finished first in 2008 with 2,511 passing yards allowed, which was the 3rd best total in the NFL since 1978. PIT's defense gave up 157 ypg (57%) with a 12-20 ratio which equates to 1 TD allowed every 44 pass att. Opposing teams had season low QBR's in 6 games LY with a 33.5 avg. While PIT has good CB's the strength of the secondary is with its safeties. Troy Polamalu has a slight edge over the Cardinals Adrian Wilson as the NFL's top SS as he has a bit more upside. He started all 16 games in 2008 after missing 8 combined games the previous 2 years. While Polamalu gets most of the publicity, FS Ryan Clark is the glue that holds the secondary together making the play calls and positioning the DB's. He bounced back well LY after missing 6 gms after having his spleen removed in 2007. He missed 1 game with a shoulder injury and sat out the regular season finale of '08 to rest. Ike Taylor is a good but not great corner that knows his limitations. While he only has 7 int as a starter he has an impressive 68 pbu the past 4 years meaning he plays the ball well but just can't catch it. PIT let Bryant McFadden (8 sts, 41 tkl, 8 pbu) depart in FA and there will be a battle between Deshea Townsend and William Gay for his spot. Townsend has the vast edge in experience but will be 34 when the season starts and has lost a step playing mostly in nickel and dime sets LY. Gay was the primary nickel back in 2008 and started 4 games when McFadden was out. PIT did address the future by drafting Keenan Lewis and like most of the rookies he'll use 2009 to learn the system and be eased onto the field. Teams with quality WR's will attempt to go after the CB's here but PIT has more than enough talent on deck to handle it.



**CB IKE TAYLOR #24** 6-2 195 Age: 29 7th Yr (16/16)

#4DC PIT '03 - 65 tkls, 14 pbu (#2 tm), 1 int last year.

16 sts, led tm in int and tied for tm lead in pbu in '07.

**Keenan Lewis #20** 6-0 208 Age: 23 Rookie

3rd round, 96th pick out of Oregon St.

Led the Beavers with 4 int last year.

**CB DESHEA TOWNSEND #26** 5-10 190 Age: 28 12th Yr (4/12)

#4DC PIT '98 - 20 tkls, 8 pbu, 2 int last year.

16 sts, tied for tm lead in pbu (16) in '07.

**William Gay #22** 5-10 190 Age: 24 3rd Yr (4/16)

#5DC PIT '07 - 41 tkls, 1 tfl, 7 pbu, 1 int last year.

16 gms, 19 tkls as the dime CB in '07.

**SSTROY POLAMALU #43** 5-10 207 Age: 28 7th Yr (16/16)

#1DC PIT '03 - 73 tkls (#4 tm), 5 tfl, 17 pbu (#1 tm), 7 int

(#1) LY. 11 sts (inj), 58 tkls, 9 pbu in '07.

**Tyrone Carter #23** 5-9 195 Age: 33 10th Yr (2/16)

#4DC MIN '00 - 16 tkls, 1 tfl, 5 pbu, 3 int last year.

5 sts, 57 tkls in '07.

**FS RYAN CLARK #25** 5-11 205 Age: 30 8th Yr (14/14)

UFA NYG '02 - 87 tkls (#3 tm), 6 pbu, 1 int, out gm 8 and

rested gm 16 LY. 6 sts (inj), 22 tkls in '07.

**Ryan Mundy #29** 6-1 215 Age: 24 2nd Yr (0/0)

#6DC PIT '08 - Practice squad LY but cut 8/31, re-signed for '09.

**2008 Defensive QBR: 63.4 - #2**

**2008 DB Int/PBU: 17/65 - #5**

**2009 DB '08 Int/PBU: 15/57 - #5**

**2008 DB '06-'08 Int/PBU: 28/143 - #7**

**2009 FS/SS Tackles for '08: 156 - #5**

**NFL Player Draft Rating: 7.58 - #27**

**SPECIALTEAMS** - PIT's special teams were a glaring weakness when Tomlin took over in 2007 being exposed by several foes and

finishing 29th in our rankings in Cowher's final season. In 2007 Tomlin's first unit finished 21st and the return units were the big issue as they only avg 6.1 on PR's (14th) and 22.0 on KR (16th). The numbers actually got worse in 2008 as they put Santonio Holmes on PR's and the team finished with a 6.0 PR avg (tied for 31st) and 20.3 on KR's (29th) as they failed to find a consistent KR specialist. Holmes, however, did return a punt for TD in the playoff win over San Diego. Mitch Berger was brought in after Daniel Sepulveda tore his right ACL for the second time in 3



## 2009 DEPTH CHART

### OFFENSE

	1st Team	2nd Team	3rd Team
QB	Ben Roethlisberger	Charlie Batch	Dennis Dixon
RB	Willie Parker	Rashard Mendenhall	Mewelde Moore
FB	Carey Davis	Frank Summers	
WR	Hines Ward	Limas Sneed	Mike Wallace
WR	Santonio Holmes	Shaun McDonald	Dallas Baker
TE	Heath Miller	Matt Spaeth	Sean McHugh
LT	Max Starks	Tony Hills	Ramon Foster
LG	Chris Kemoeatu	Jeremy Parquet	
C	Justin Hartwig	AQ Shipley	
RG	Kraig Urbik	Darnell Stapleton	Doug Legursky
RT	Willie Colon	Trai Essex	Jason Capizzi

### DEFENSE

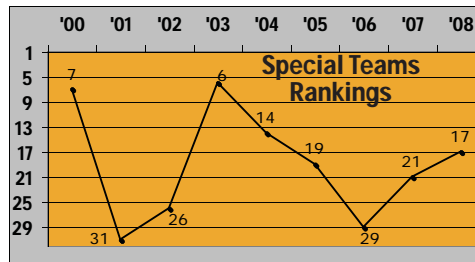
	1st Team	2nd Team	3rd Team
DE	Aaron Smith	Travis Kirschke	Ra'Shon Harris
NT	Casey Hampton	Chris Hoke	Scott Paxson
DE	Brett Keisel	Ziggy Hood	Nick Eason
OLB	LaMarr Woodley	Andre Frazier	Patrick Bailey
ILB	James Farrior	Keyaron Fox	Tom Korte
ILB	Lawrence Timmons	Patrick Bailey	Andy Schantz
OLB	James Harrison	Bruce Davis	Arnold Harrison
CB	Ike Taylor	Keenan Lewis	Keivan Ratliff
CB	Deshea Townsend	William Gay	Anthony Madison
SS	Troy Polamalu	Tyrone Carter	
FS	Ryan Clark	Ryan Mundy	Derrick Richardson

### SPECIAL TEAMS

K	Jeff Reed	P Daniel Sepulveda
---	-----------	--------------------



years (including once at Baylor) on the first day of TC. Berger struggled with a hamstring injury which caused him to be cut for 3 games and he ended up with a 36.4 net (28th) and only landed 19 punts inside the 20 (tied 20th). The coverage units stepped up and had a good year allowing just 6.2 on PR's (4th) and 19.1 on KR's (1st). K Jeff Reed made 87.1% of his FG's and was 9 of 12 from 40+ but he may miss the season opener for an off-field incident after the Super Bowl. PIT will likely look to Holmes and rookie Joe Burnett to handle the return duties in 2009 and after finishing 13th in our special teams rankings LY another mid-level finish looks probable.



**K JEFF REED #3** 5-11 225 Age: 30 8th Yr (16 gms)  
UFA NO '02 - Hit 27-31 FG's, long of 53, 36-37 xp last year.  
23-25 FG's, long of 49, 44-44 xp in '07.

**P DANIEL SEPULVEDA #9** 6-3 230 Age: 25 3rd Yr (0 gms)  
#4DC PIT '07 - A huge blow LY when he tore his ACL in July.  
16 gms, 68 punts (42.4), 37.9 net in his rookie yr.

**KR JOE BURNETT #40** 5-9 192 Age: 22 Rookie  
5th round, 168th pick out of UCF.  
2nd Tm AA avg 28.7 on KR LY.

**PR SANTONIO HOLMES #10** 5-11 192 Age: 25 4th Yr (15 gms)  
#1DC PIT '06 - 34 PR's (6.6), 0 TD's last year.  
No PR's in '07. 26 PR's (10.2), 1 TD in '06.

**Daniel Sepulveda's 2008 Net Avg: Inj Res**

**2008 Offensive KR Avg: 20.3 - #29**

**2008 Foes Avg Drive Start on KR's: 26.4 - #9**

**2008 Offensive PR Avg: 6.0 - #31**

**2008 Net TD Returns/Block P/FG's: 1**

**Jeff Reed's '08 FG: 27-31 L/53 - #15**

**2008 Special Teams Rating: 7.12 - #17**

**COACHING** - The Steelers overcame one of the toughest schedules to start a season as they faced twelve .500 or better teams from 2007 and muscled their way to the Super Bowl. Mike Tomlin is the only HC in Steeler history to win division titles in his first 2 years while setting a team record with 22 victories to start his career. Tomlin did inherit a very strong roster from Bill Cowher as well as an elite DC in Dick LeBeau. The 2008 Steelers defense was even better than its #1 ranking as they were 55 yards rushing away from being the first team to lead the NFL in total defense (237.2), pass defense (156.9), scoring defense (13.9) and rushing defense (80.3) since the Chiefs in 1969. The Steelers retained essentially the entire coaching staff which is rare for a team off a Super Bowl win. LeBeau turns 72 this year and is a lock for the Hall of Fame as both a coach and as a player. OC Bruce Arians continues to shift the offense to a pass-first philosophy and he caught a good deal of flack after the Steelers suffered their 2nd worst rushing finish (23rd). Arians will have to work on cutting down the number of times Roethlisberger has been hit as he's been sacked 139 times over the L3Y by improving the OL and getting a faster release out of his QB. While the Steelers still have issues on the OL and DL (age), they remain the team to beat in the AFC North and will be a tough defending Super Bowl champion to take down.

#### Head Coach - Mike Tomlin, 3rd year

Tomlin became the youngest HC (36) to win a Super Bowl in just his 2nd season. Prior to taking over the reins in Pittsburgh, Tomlin was the DC in Minnesota for 1 season ('06).

#### Off Coordinator - Bruce Arians, 6th year (3rd as OC)

Arians enters his 3rd season as the OC after serving the previous 3 seasons as the WR's coach. Prior to Pittsburgh, Arians was the OC for Cleveland for 3 seasons ('01-'03).

#### QB Coach - Ken Anderson, 3rd year

Anderson coached the QB's for 3 seasons in Jacksonville ('03, '05-'06) and spent 1 year with the WR's ('04) there. He was previously the OC in Cincinnati from '96-'00.

#### RB Coach - Kirby Wilson, 3rd year

Wilson came to Pittsburgh after three seasons as the Running Backs coach in Arizona ('04-'06).

#### WR Coach - Randy Fichtner, 3rd year

Fichtner joined the Steelers from the college ranks, as he had been the OC/QB coach at Memphis for 6 seasons.

#### OL Coach - Larry Zierlein, 3rd year

Zierlein was the assistant OL coach in Buffalo for one season, prior to joining the Steelers staff. He was the Browns OL coach from 2001-2004.

#### Defensive Coordinator - Dick LeBeau, 6th yr

LeBeau is in his 2nd stint as the DC of Pittsburgh, as he held the same post here from '95-'96 and he spent 2+ years as the HC of the Bengals ('00-'02).

#### DL Coach - John Mitchell, 16th year

Mitchell also carries the title of assistant HC. Prior to Pittsburgh, Mitchell coached the Browns DL for 3 years ('91-'93).

#### LB Coach - Keith Butler, 7th year

Butler joined the Steelers in 2003 after serving the previous four seasons in a similar capacity with Cleveland (1999-'02).

#### Secondary Coach - Ray Horton, 3rd year

Before joining the Steelers, Horton spent 2 seasons as the secondary coach in Detroit.

#### Special Teams Coach - Bob Ligashesky, 3rd year

Ligashesky was previously the ST's coach in STL from '05-'06 and also spent 19 years as a college coach.



OLB James Harrison

### 2009 DRAFT

RD-#	POS	PLAYER	SCHOOL
1-32	DE	Ziggy Hood	Missouri
3-79	RG	Kraig Urbik	Wisconsin
3-84	WR	Mike Wallace	Ole Miss
3-96	CB	Keenan Lewis	Oregon St
5-168	CB	Joe Burnett	UCF
5-169	RB	Frank Summers	UNLV
6-205	DE	Ra'Shon Harris	Oregon
7-226	C	AQ Shipley	Penn St
7-241	TE	David Johnson	Arkansas St

### ADDITIONS AND DELETIONS

ADDITIONS		DELETIONS	
RB	Stefan Logan (0)	QB	Byron Leftwich (0)
WR	Brandon Williams (0)	RB	Gary Russell (0)
CB	Keiwan Ratliff (4)	WR	Nate Washington (1)
		RG	Kendall Simmons (4)
		LT	Marvel Smith (5)
		DE	Orpheus Royce (0)
		LB	Larry Foote (16)
		LB	Mike Humpal (0)
		CB	Bryant McFadden (8)
		SS	Anthony Smith (0)
		P	Mitch Berger (0)

## 2009 ROSTER

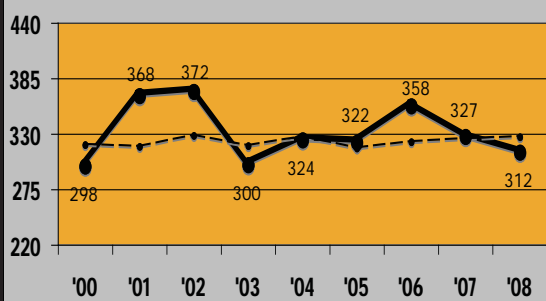
#	Name	POS	08 GM'S	HT	WT	BIRTH	EXP	SCHOOL
55	Patrick Bailey	LB	12/0	6'4"	235	11/19/85	2	Duke
81	Dallas Baker	WR	8/0	6'3"	206	11/10/82	2	Florida
16	Charlie Batch	QB	0/0	6'2"	216	12/5/74	11	E Michigan
18	Steven Black	WR	-	6'3"	213	12/11/86	0	Memphis
31	Fernando Bryant	DB	2/0	5'11"	184	3/26/77	11	Alabama
40	Joe Burnett	CB	-	6'3"	281	11/28/86	0	UCF
69	Jason Capizzi	T	0/0	6'9"	315	6/19/83	1	Indiana (PA)
23	Tyrone Carter	SS	16/2	5'9"	195	3/31/76	10	Minnesota
25	Ryan Clark	FS	14/14	5'11"	205	10/12/79	8	LSU
74	Willie Colon	T	16/16	6'3"	315	4/9/83	4	Hofstra
5	Piotr Czech	K	-	6'5"	210	8/17/86	0	Wagner
53	Bruce Davis	LB	5/0	6'3"	252	9/2/85	2	UCLA
38	Carey Davis	FB	14/4	5'10"	225	3/27/81	3	Illinois
2	Dennis Dixon	QB	1/0	6'3"	195	1/11/85	2	Oregon
93	Nick Eason	DE	15/0	6'3"	305	5/29/80	7	Clemson
79	Trai Essex	T	9/0	6'4"	324	12/5/82	5	Northwestern
48	Mark Estermyer	LS	0/0	6'2"	245	10/17/85	0	Pittsburgh
51	James Farrior	ILB	16/16	6'2"	243	1/6/75	13	Virginia
11	Jayson Foster	WR	0/0	5'7"	175	7/22/85	1	Ga Southern
73	Ramon Foster	T	-	6'5"	338	1/7/86	0	Tennessee
57	Keyaron Fox	LB	13/0	6'3"	235	1/24/82	6	Georgia Tech
54	Andre Frazier	LB	15/0	6'5"	245	6/29/82	5	Cincinnati
22	William Gay	CB	16/4	5'10"	190	1/1/85	3	Louisville
80	Cedric Goodman	WR	-	6'2"	190	3/17/86	0	Georgia
19	Tyler Grisham	WR	-	5'11"	180	6/11/87	0	Clemson
98	Casey Hampton	NT	13/13	6'1"	325	9/3/77	9	Texas
73	Ra'Shon Harris	DE	-	6'4"	298	8/2/86	0	Oregon
97	Arnold Harrison	LB	0/0	6'3"	241	9/20/82	3	Georgia
92	James Harrison	OLB	15/15	6'0"	242	5/4/78	6	Kent St
62	Justin Hartwig	C	16/16	6'4"	312	11/21/78	8	Kansas
66	Tony Hills	T	0/0	6'5"	304	11/4/84	2	Texas
76	Chris Hoke	NT	16/3	6'2"	305	4/6/76	9	BYU
10	Santonio Holmes	WR	15/15	5'11"	192	3/3/84	4	Ohio St
96	Evander Hood	DE	-	6'3"	300	2/16/87	0	Missouri
85	David Johnson	TE	-	6'2"	271	8/26/87	0	Arkansas St
99	Brett Keisel	DE	10/10	6'5"	285	9/19/78	8	BYU
68	Chris Kemoatu	G	16/16	6'3"	344	1/4/83	5	Utah
90	Travis Kirschke	DE	16/6	6'3"	298	9/6/74	13	UCLA
47	Tom Korte	LB	-	6'0"	239	7/26/86	0	Hillsdale
64	Doug Legursky	C	0/0	6'1"	323	6/9/86	1	Marshall
20	Keenan Lewis	CB	-	6'0"	208	5/17/86	0	Oregon St
30	Roy Lewis	CB	1/0	5'10"	190	5/19/85	1	Washington
41	Stefan Logan	RB	0/0	5'7"	177	6/2/81	1	South Dakota
37	Anthony Madison	DB	16/0	5'9"	180	10/8/81	4	Alabama
8	Kevin McCabe	QB	-	6'2"	220	11/12/84	0	California (PA)
87	Shaun McDonald	WR	12/7	5'10"	183	6/30/81	7	Arizona St
49	Sean McHugh	TE	15/3	6'5"	265	5/27/82	6	Penn St
69	Steve McLendon	DT	-	6'4"	280	11/3/86	0	Troy
34	Rashard Mendenhall	RB	4/1	5'10"	225	6/19/87	1	Illinois
83	Heath Miller	TE	14/14	6'5"	256	10/22/82	5	Virginia
21	Mewelde Moore	RB	16/4	5'11"	209	7/24/82	6	Tulane
29	Ryan Mundy	SAF	0/0	6'1"	215	2/11/85	1	West Virginia
15	Martin Nance	WR	0/0	6'3"	213	5/26/83	1	Miami (Ohio)
39	Willie Parker	RB	11/11	5'10"	209	11/11/80	6	North Carolina
65	Jeremy Parquet	T	4/0	6'6"	321	4/11/82	3	Southern Miss
71	Scott Paxson	DT	1/0	6'4"	292	2/3/83	1	Penn St
43	Troy Polamalu	SS	16/16	5'10"	207	4/19/81	7	USC
35	Ryan Powdrell	FB	0/0	5'11"	254	12/20/83	2	USC
27	Keiwan Ratliff	CB	13/4	5'11"	188	4/19/81	6	Florida
33	Isaac Redman	RB	-	6'0"	230	11/10/84	0	Bowie St
3	Jeff Reed	K	16/0	5'11"	225	4/9/79	8	North Carolina
64	Jordan Reffett	DE	0/0	6'4"	292	9/9/84	1	Washington
13	Mike Reilly	QB	-	6'3"	215	11/1/85	0	C Washington
45	Derrick Richardson	DB	-	5'11"	190	4/3/86	0	N Mexico St
7	Ben Roethlisberger	QB	16/16	6'5"	241	3/2/82	6	Miami (OH)
46	Andy Schantz	LB	-	6'1"	235	8/23/86	0	Portland St
9	Daniel Sepulveda	P	0/0	6'3"	230	1/12/84	2	Baylor
84	Dezmond Sherrod	TE	0/0	6'2"	250	5/11/85	1	Mississippi St
61	AQ Shipley	C	-	6'1"	297	5/22/86	0	Penn St
91	Aaron Smith	DE	16/16	6'5"	298	4/19/76	11	N Colorado
89	Matt Spaeth	TE	16/13	6'7"	270	11/24/84	3	Minnesota
72	Darnell Stapleton	G	16/12	6'3"	305	9/21/85	3	Rutgers
78	Max Starks	T	16/11	6'8"	345	1/10/82	6	Florida
44	Frank Summers	RB	-	5'9"	243	9/6/85	0	UNLV
14	Limas Sweed	WR	11/0	6'4"	220	12/25/84	2	Texas
24	Ike Taylor	CB	16/16	6'2"	195	5/5/80	7	Louisiana
94	Lawrence Timmons	LB	16/2	6'1"	234	5/14/86	3	Florida St
26	Deshaea Townsend	CB	12/4	5'10"	190	9/8/75	12	Alabama
65	Kraig Urbik	G	-	6'5"	328	9/23/85	0	Wisconsin
28	Justin Vincent	RB	0/0	5'10"	219	1/25/83	1	LSU
17	Mike Wallace	WR	-	6'0"	199	8/1/86	0	Mississippi
86	Hines Ward	WR	16/14	6'0"	205	3/8/76	12	Georgia
60	Greg Warren	LS	7/0	6'3"	252	10/18/81	5	North Carolina
16	Brandon Williams	WR	0/0	5'11"	170	2/24/84	2	Wisconsin
56	LaMarr Woodley	OLB	15/15	6'2"	265	11/3/84	3	Michigan
95	Danovan Woods	LB	5/0	6'2"	230	7/27/85	2	Oklahoma St

# STEELERS HISTORY

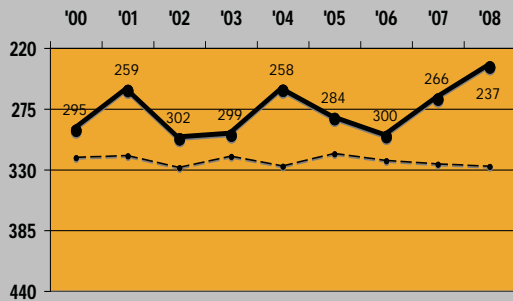
Record: 519-488-20

Postseason: 31-18

## OFFENSIVE YPG



## DEFENSIVE YPG



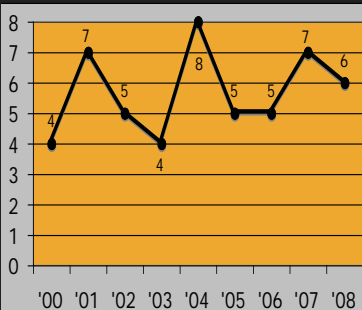
## CAREER LEADERS

QUARTERBACK										
	Yds	Yrs	Gms	Att	%	TD	Int			
1 Terry Bradshaw	27989	'70-'83	168	3901	51.9	212	210			
2 Ben Roethlisberger	14974	'04-'08	72	1905	62.4	101	21			
3 Kordell Stewart	13328	'95-'02	114	2107	56.5	70	72			
4 Neil O'Donnell	12867	'91-'95	66	1871	57.1	68	39			
5 Bubba Brister	10104	'86-'92	61	1477	52.5	51	57			
RUNNING BACK										
	Yds	Yrs	Gms	Att	%	TD				
1 Franco Harris	11950	'72-'83	165	2881	4.1	91				
2 Jerome Bettis	10571	'96-'05	145	2683	3.9	78				
3 Willie Parker	4989	'04-'08	65	1155	4.3	24				
4 John Henry Johnson	4381	'60-'65	67	1006	4.4	26				
5 Frank Pollard	3989	'80-'88	111	953	4.2	20				
RECEIVER										
	Yds	Yrs	Gms	Rec	%	TD				
1 Hines Ward	9780	'98-'08	170	800	12.2	72				
2 John Stallworth	8723	'74-'87	165	537	16.2	63				
3 Louis Lipps	6018	'84-'91	108	358	16.8	39				
4 Lynn Swann	5462	'74-'82	115	336	16.3	51				
5 Elbie Nickel	5131	'47-'57	131	329	15.6	37				

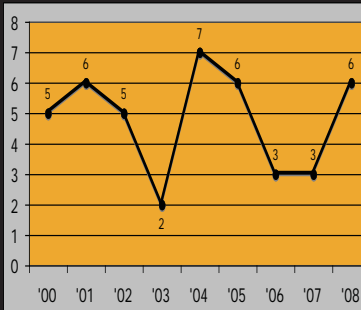
## LAST 10 YEAR LEADERS

QB'S										RB'S									
	ATT	COM	PCT	YDS	TD	INT					ATT	GAIN	AVG		WR'S	REC	YDS	AVG	
2008	B Roethlisberger	281	469	3301	59.9	17	15	Willie Parker	210	791	3.8	Hines Ward	81	1043	12.9	James Farrior	133	87	
	Byron Leftwich	21	36	303	58.3	2	0	Mewelde Moore	140	588	4.2	Santonio Holmes	55	821	14.9	James Harrison	101	67	
2007	B Roethlisberger	264	404	3154	65.3	32	11	Willie Parker	321	1316	4.1	Santonio Holmes	52	942	18.1	James Harrison	98	76	
	Charlie Batch	17	36	232	47.2	2	3	Najeh Davenport	107	499	4.7	Hines Ward	71	732	10.3	James Farrior	94	64	
2006	B Roethlisberger	280	469	3513	59.7	18	23	Willie Parker	337	1494	4.4	Hines Ward	74	975	13.2	James Farrior	128	85	
	Charlie Batch	31	53	492	58.5	5	0	Najeh Davenport	60	221	3.7	Santonio Holmes	49	824	16.8	Larry Foote	91	62	
2005	B Roethlisberger	168	268	2385	62.7	17	9	Willie Parker	255	1202	4.7	Hines Ward	69	975	14.1	James Farrior	119	74	
	Tommy Maddox	34	71	406	47.9	2	4	Jerome Bettis	110	368	3.3	Antwaan Randle El	35	558	15.9	Larry Foote	102	76	
2004	B Roethlisberger	196	295	2621	66.4	17	11	Jerome Bettis	250	941	3.8	Hines Ward	80	1004	12.6	Troy Polamalu	96	67	
	Tommy Maddox	30	60	329	50	1	2	Duce Staley	192	830	4.3	Plaxico Burress	35	698	19.9	James Farrior	94	65	
2003	Tommy Maddox	298	519	3414	57.4	18	17	Jerome Bettis	246	811	3.3	Hines Ward	95	1163	12.2	James Farrior	141	96	
	Josh Miller	1	1	81	100	1	0	Amos Zereoue	132	433	3.3	Plaxico Burress	60	860	14.3	Kendrell Bell	99	80	
2002	Tommy Maddox	234	377	2836	62.1	20	16	Amos Zereoue	193	762	3.9	Hines Ward	112	1329	11.9	Joey Porter	88	60	
	Kordell Stewart	109	166	1155	65.7	6	6	Jerome Bettis	187	666	3.6	Plaxico Burress	78	1325	17	Chad Scott	83	66	
2001	Kordell Stewart	266	442	3109	60.2	14	11	Jerome Bettis	225	1072	4.8	Plaxico Burress	66	1008	15.3	Earl Holmes	116	83	
	Tommy Maddox	7	9	154	77.8	1	1	Kordell Stewart	96	537	5.6	Hines Ward	94	1003	10.7	Kendrell Bell	83	70	
2000	Kordell Stewart	151	289	1860	52.2	11	8	Jerome Bettis	355	1341	3.8	Hines Ward	48	672	14	Earl Holmes	127	86	
	Kent Graham	66	148	878	44.6	1	1	Kordell Stewart	78	436	5.6	Bobby Shaw	40	672	16.8	Levon Kirkland	86	65	
1999	Mike Tomczak	139	258	1625	53.9	12	8	Jerome Bettis	299	1091	3.6	Troy Edwards	61	714	11.7	Earl Holmes	114	87	
	Kordell Stewart	160	275	1464	58.2	6	10	Richard Huntley	93	567	6.1	Hines Ward	61	638	10.5	Levon Kirkland	107	86	

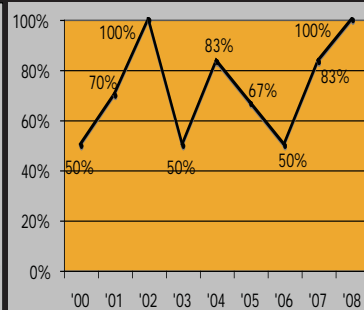
## HOME WINS



## AWAY WINS



## DIVISION RECORD



RB Willie Parker

## LAST 20 FIRST RND DC'S

Year	Player	Team
2009	Ziggy Hood	DE Missouri
2008	Rashard Mendenhall	RB Illinois
2007	Lawrence Timmons	LB Florida State
2006	Santonio Holmes	WR Ohio State
2005	Heath Miller	TE Virginia
2004	Ben Roethlisberger	QB Miami, Ohio
2003	Troy Polamalu	S USC
2002	Kendall Simmons	OG Auburn
2001	Casey Hampton	DT Texas
2000	Plaxico Burress	WR Michigan State
1999	Troy Edwards	WR Louisiana Tech
1998	Alan Faneca	OG LSU
1997	Chad Scott	CB Maryland
1996	Jamain Stephens	OT North Car A&T
1995	Mark Bruener	TE Washington
1994	Charles Johnson	WR Colorado
1993	Deion Figures	CB Colorado
1992	Leon Searcy	OT Miami, FL
1991	Huey Richardson	LB Florida
1990	Eric Green	TE Liberty
1989	Tim Worley	RB Georgia
	Tom Ricketts	OT Pittsburgh

## LAST FIVE COACHES

Year	Coach	Record
1965	Mike Nixon	2-12-0
1966-68	Bill Austin	11-28-3
1969-91	Chuck Noll	193-141-1
1992-2006	Bill Cowher	148-90-1
'07-present	Mike Tomlin	22-10-0

## HALL OF FAME (19)

Year	Player	Year	Player
1963	Bert Bell	1988	Jack Ham
1964	Art Rooney	1989	Mel Blount
1966	Bill Dudley	1989	Terry Bradshaw
1966	Walt Kiesling	1990	Franco Harris
1967	Bobby Layne	1990	Jack Lambert
1968	Marion Motley	1993	Chuck Noll
1969	Ernie Stautner	1997	Mike Webster
1987	Len Dawson	2000	Dan Rooney
1987	Joe Greene	2002	John Stallworth
1987	John Henry Johnson	2009	Rod Woodson

## PLAYOFF STATS

YR	RD	TEAM	SCORE
2008	CSF	SAN DIEGO	35-24
2008	CF	BALTIMORE	23-14
2008	SB	ARIZONA	27-23
2007	WC	JACKSONVILLE	29-31
2005	WC	CINCINNATI	31-17
2005	CSF	INDIANAPOLIS	21-18
2005	CF	DENVER	34-17
2005	SB	SEATTLE	21-10
2004	CSF	NY JETS	20-17
2004	CF	NEW ENGLAND	27-41
2002	WC	CLEVELAND	36-33
2002	CSF	TENNESSEE	31-34 (OT)
2001	CSF	BALTIMORE	27-10
2001	CF	NEW ENGLAND	17-24

## OFFENSE

	Rush-YDS	AVG	CO-ATT	YDS	SK VS
22	42-165	3.9	17-27	177	1
11	28-52	1.9	16-33	223	4
20	25-58	2.3	21-30	234	3
24	26-43	1.7	29-42	297	6
19	34-144	4.2	14-21	202	1
21	42-112	2.7	14-24	183	2
20	33-90	2.7	21-29	268	2
14	33-181	5.5	10-22	158	1
23	43-193	4.5	17-30	171	3
24	43-193	4.5	17-30	171	3
30	20-89	4.4	30-48	343	3
21	20-67	3.4	21-42	257	1
21	49-154	3.1	12-22	143	2
23	22-58	2.6	24-42	248	3

## DEFENSE

	Rush-YDS	AVG	CO-ATT	YDS	SK BY	TO
15	11-15	1.4	21-35	275	4	+2
13	25-73	2.9	13-30	125	3	+3
23	12-33	2.8	31-43	374	2	+1
14	29-135	4.7	9-21	104	4	+2
19	20-84	4.2	25-41	243	4	+2
2	14-58	4.2	22-38	247	5	+2
16	21-97	4.6	18-30	211	3	+4
20	25-137	5.5	26-49	259	3	-1
17	27-110	4.1	21-33	165	1	+2
17	27-110	4.1	21-33	165	1	+2
21	28-38	1.4	26-43	409	2	-2
29	36-99	2.8	27-45	331	1	+3
7	11-22	2.0	18-37	128	3	+3
15	25-67	2.7	22-39	192	4	-4

## HOME TEAM IN CAPS